



IPC-9691B

User Guide for the IPC-TM-650, Method 2.6.25, Conductive Anodic Filament (CAF) Resistance and Other Internal Electrochemical Migration Testing

Developed by the Electrochemical Migration Task Group (5-32e) of the Cleaning and Coating Committee (5-30) of IPC

Supersedes:
IPC-9691A - August 2007

Users of this publication are encouraged to participate in the development of future revisions.

Contact:

IPC

Table of Contents

1	SCOPE	1	Figure 4-3	Two Photos Showing Failure Between Plated Through Holes	2
2	BACKGROUND	1	Figure 4-4	Failure Analysis Photo Showing Suspected CAF Failure Between Very Closely-Spaced Plated Through Holes	2
3	PURPOSE	1			
4	INTRODUCTION	1	Figure 6-1	Cross-section SEM micrograph of a laminate material. The hollow glass fibers are highlighted.	4
5	WHAT IS CONDUCTIVE ANODIC FILAMENT GROWTH?	3	Figure 6-2	A cross-section of a hollow fiber can be seen in the middle fiber in this SEM micrograph. Hollow fibers of smaller diameter may be potentially more damaging as they tend to fill faster with conductive media.	4
6	OTHER INTERNAL ECM MODES	4			
7	INCREASING INTERNAL ECM RISK TRENDS	5	Figure 8-1	Typical Copper Wicking in a Plated Through Hole	6
8	ADJUSTED CALCE CAF FAILURE MODEL	6	Figure 8-2a	Internal Separation	6
9	INTERNAL ECM TEST VEHICLE DESIGN	7	Figure 8-2b	Damage Due to Hole Drilling and Wicking	6
9.1	Printed Board Thickness and Stackup	7	Figure 9-1	IPC-9691 Test Coupon Region A: Plated Through Holes in Alignment with X, Y	7
9.2	Via Patterns and Drill Parameters	8	Figure 9-2	Region B Via Test Pattern. The Anode Vias are Staggered Diagonally to the Cathode Vias	7
9.3	Solder Mask	8	Figure 9-3	The gap between solder mask and metal can create a channel that entraps contaminants, such as in this example of a product failure (not a CAF coupon).	9
9.4	Surface Finish	12	Figure 9-4	Potential solder mask anomalies on ECM coupons, which can cause surface defects unrelated to target ECM performance. LEFT: poor solder mask adhesion; RIGHT: broken solder mask webs.	9
10	INTERNAL ECM TEST BOARD SAMPLE PREPARATION & TESTING	13	Figure 9-5	Some surface defects can be challenging to find, such as this small dendrite on an ECM coupon.	10
11	INTERNAL ECM TEST DATA FORMAT	14	Figure 9-6	Severe damage caused by heavy dendritic growth resulted in complete disqualification of test results from this ECM test coupon.	11
12	INTERNAL ECM TEST SPACING DATA ANALYSIS	15	Figure 9-7	LEFT: This image illustrates how plugged and covered vias are effective at eliminating corrosion, compared with adjacent, non-plugged vias. RIGHT: Cross section of ink-plugged via, covered with solder mask.	11
13	SAMPLE SIZES	16	Figure 9-8	LEFT: voiding and incomplete fill is typical with solder mask ink-plugged vias. RIGHT: via filling with epoxy resin is highly consistent and repeatable.	12
14	RELATING CAF RESISTANCE TEST RESULTS TO EXPECTED FIELD LIFE	18	Figure 13-1	TB38A as Manufactured by Board House with NiAu (ENIG) Finish	16
15	SPECIFYING INTERNAL ECM RESISTANCE	18	Figure 13-2	Schematic of In-Line Test Comb, With Possible Failure Site	17
16	LOCATION OF TESTING	19	Figure 13-3	Schematic Section of Via Pair With Bias Applied	17
17	LOCATING INTERNAL ECM FAILURES	20			
18	FACTORS AFFECTING INTERNAL ECM RESISTANCE	22			
19	CONCLUSIONS	26			
20	SUMMARY	27			
APPENDIX A Other Internal ECM or CAF Resistance Test Boards/ Coupons		28			
Figures					
Figure 4-1	Example of an Internal Conductive Filament	1			
Figure 4-2	Two Perspectives of the Same Conductive Path	2			

Figure 13-4 Schematic of Staggered Test Comb, With Possible Failure Site 17

Figure 13-5 Internal ECM Test Coupons Under Test in Environmental Chamber 17

Figure 15-1 Example of the Electrical Effect of a Typical CAF Failure 19

Figure 17-1 Schematic Section to Illustrate Polishing to Locate CAF 20

Figure 17-2 Schematic Section to Illustrate Polishing to Locate CAF 20

Figure 17-3 Hollow Fiber (filled with ECM Cu deposits) 21

Figure 17-4 Striation (“tri-point” from poor wetting of glass fiber bundle) 21

Figure 18-1 Effect of Via Wall-to-Wall Gap on TTF 22

Figure 18-2 Effect of Via Alignment on TTF, for 2113 and 2116 Glass-Reinforced Laminates 22

Figure 18-3 Effect of Surface Finish on TTF 23

Figure 18-4 Effect of Drill Feed Rate 23

Figure 18-5 Effect of Reflow 24

Figure 18-6 Effect of Board House 24

Figure 18-7 Effect of Material T_g 25

Figure 18-8 Effect of Reinforcement – Board House A, Drill 1, NiAu (ENIG) Finish 25

Figure 18-9 TTF Data for CAF and Non-CAF Resistant Laminate 26

Figure A-1 IBM CAF TV 29

Figure A-2 ALU MRT-6 CAF Test Vehicle 30

Figure A-3 ALU CAF-2 Test Vehicle 31

Figure A-4 Cisco Sipedon CAF Test Vehicle 32

Tables

Table 7-1 Plated Through Hole Wall-to-Wall Spacing Trends 5

Table 9-1 Typical Resin Content vs. Glass Fiber Content in Common Prepreg Glass Weave Styles 8

Table 11-1 Typical SIR-Type Resistance Data Reporting .. 14

Table 11-2 Same Data from Table 11-1, Sorted for Each CAF Analysis 15

Table 12-1 Typical Dicyandiamide-Cured FR-4 Laminate Test Results from SIR-Type Resistance Data 16

Table 18-1 Coupon Conditions Selected for Comparison of Surface Finishes 22

Table 18-2 Coupon Conditions Selected for Comparison of Drill Parameters 23

Table 18-3 Coupon Conditions Selected for Comparison of Reflow Conditions 24

Table 18-4 Coupon Conditions Selected for Comparison of Manufacturing Site 24

Table 18-5 Coupon Conditions Selected for Comparison of Material T_g 25

Table 18-6 Coupon Conditions Selected for Comparison of Reinforcements 25

Table 18-7 Coupon Conditions Selected for Comparison of CAF Designation 26

User Guide for the IPC-TM-650, Method 2.6.25, Conductive Anodic Filament (CAF) Resistance and Other Internal Electrochemical Migration Testing

1 SCOPE

This document is the product of the IPC Electrochemical Migration (ECM) Task Group. It was drafted to provide guidance regarding implementation of the User Guide for the IPC-TM-650, Method 2.6.25, Conductive Anodic Filament (CAF) Resistance and Other Internal Electrochemical Migration Testing to evaluate the effects of mechanical stress, laminate material fracturing, ionic contamination, moisture content prior to press lamination, and other material processing characteristics on formation of conductive paths within laminate material such as conductive anodic filaments (CAF), one specific type of ECM failure mode. This internal ECM test method provides a proven standard for determining the risk of through-hole bias and other internal conductor orientations that result in significant reduction of insulation resistance (IR), rather than on the surface of printed boards.

2 BACKGROUND

In recent years, internal electrochemical migration (ECM) liability concerns in the industry have increased as board designs have advanced in terms of decreasing clearances, dimensions and/or higher voltages. ECM failures describe any phenomena that causes internal drop in insulation resistance, including conductive anodic filament (CAF) formation, weak polymer resin bond, hollow fibers, poor wetting of glass reinforcement fibers with resin, foreign material or contamination, rough hole walls, and excessive copper wicking within plated through holes. Temperature, humidity and bias testing of insulation resistance using test coupons is the methodology used to check for these defects. The user of this document is encouraged to become familiar with IPC-9201, *Surface Insulation Resistance Handbook* to distinguish between internal ECM failures and possible confounding Surface Insulation Resistance (SIR) failures.

3 PURPOSE

This user guide addresses test issues regarding determining pass/fail criteria based on knowledge of three product goals:

- What are the long term reliability requirements?
- What is the closest spacing required for a given voltage?
- Evaluate the internal ECM Failure risk.

4 INTRODUCTION

Internal ECM, including conductive filament growth occurs within a printed board and may or may not be visible under a microscope. It is often associated with adjacent laminate material fracturing or defect (i.e., “pathway”) that contributed to its formation. Examples of visible filament growth shown in Figures 4-1, 4-2, 4-3 and 4-4 would fail the temperature, humidity, and bias conditions selected to determine multilayer board reliability between internal features.

The high magnification photo, Figure 4-1 below, shows a printed board with layer 1 (top layer) removed, revealing a near shorting condition between the plated through hole and layer 2 ground plane.

Poor press lamination and/or defective prepreg material may contribute to entrapped contaminants and the formation of conductive pathways which results in early test failure if the resin/reinforcement bonding strength and resistance to mechanical stress is reduced.

Failure analysis, as seen in two perspectives in Figure 4-2, show a near-shorting condition from the hole barrel to the plane on layer 3.

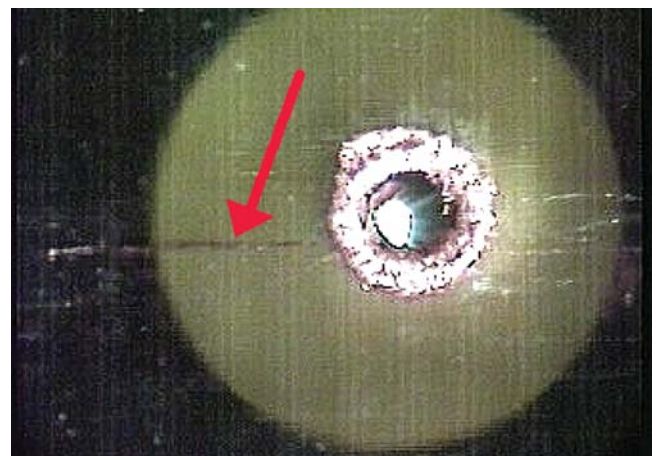


Figure 4-1 Example of an Internal Conductive Filament
[Photo courtesy of Matsushita]