

INTERNATIONAL STANDARD

NORME INTERNATIONALE



Safety of machinery – Application of protective equipment to detect the presence of persons

Sécurité des machines – Application des équipements de protection à la détection de la présence de personnes



THIS PUBLICATION IS COPYRIGHT PROTECTED
Copyright © 2018 IEC, Geneva, Switzerland

All rights reserved. Unless otherwise specified, no part of this publication may be reproduced or utilized in any form or by any means, electronic or mechanical, including photocopying and microfilm, without permission in writing from either IEC or IEC's member National Committee in the country of the requester. If you have any questions about IEC copyright or have an enquiry about obtaining additional rights to this publication, please contact the address below or your local IEC member National Committee for further information.

Droits de reproduction réservés. Sauf indication contraire, aucune partie de cette publication ne peut être reproduite ni utilisée sous quelque forme que ce soit et par aucun procédé, électronique ou mécanique, y compris la photocopie et les microfilms, sans l'accord écrit de l'IEC ou du Comité national de l'IEC du pays du demandeur. Si vous avez des questions sur le copyright de l'IEC ou si vous désirez obtenir des droits supplémentaires sur cette publication, utilisez les coordonnées ci-après ou contactez le Comité national de l'IEC de votre pays de résidence.

IEC Central Office
3, rue de Varembe
CH-1211 Geneva 20
Switzerland

Tel.: +41 22 919 02 11
info@iec.ch
www.iec.ch

About the IEC

The International Electrotechnical Commission (IEC) is the leading global organization that prepares and publishes International Standards for all electrical, electronic and related technologies.

About IEC publications

The technical content of IEC publications is kept under constant review by the IEC. Please make sure that you have the latest edition, a corrigenda or an amendment might have been published.

IEC Catalogue - webstore.iec.ch/catalogue

The stand-alone application for consulting the entire bibliographical information on IEC International Standards, Technical Specifications, Technical Reports and other documents. Available for PC, Mac OS, Android Tablets and iPad.

IEC publications search - webstore.iec.ch/advsearchform

The advanced search enables to find IEC publications by a variety of criteria (reference number, text, technical committee,...). It also gives information on projects, replaced and withdrawn publications.

IEC Just Published - webstore.iec.ch/justpublished

Stay up to date on all new IEC publications. Just published details all new publications released. Available online and also once a month by email.

Electropedia - www.electropedia.org

The world's leading online dictionary of electronic and electrical terms containing 21 000 terms and definitions in English and French, with equivalent terms in 16 additional languages. Also known as the International Electrotechnical Vocabulary (IEV) online.

IEC Glossary - std.iec.ch/glossary

67 000 electrotechnical terminology entries in English and French extracted from the Terms and Definitions clause of IEC publications issued since 2002. Some entries have been collected from earlier publications of IEC TC 37, 77, 86 and CISPR.

IEC Customer Service Centre - webstore.iec.ch/csc

If you wish to give us your feedback on this publication or need further assistance, please contact the Customer Service Centre: sales@iec.ch.

A propos de l'IEC

La Commission Electrotechnique Internationale (IEC) est la première organisation mondiale qui élabore et publie des Normes internationales pour tout ce qui a trait à l'électricité, à l'électronique et aux technologies apparentées.

A propos des publications IEC

Le contenu technique des publications IEC est constamment revu. Veuillez vous assurer que vous possédez l'édition la plus récente, un corrigendum ou amendement peut avoir été publié.

Catalogue IEC - webstore.iec.ch/catalogue

Application autonome pour consulter tous les renseignements bibliographiques sur les Normes internationales, Spécifications techniques, Rapports techniques et autres documents de l'IEC. Disponible pour PC, Mac OS, tablettes Android et iPad.

Recherche de publications IEC -

webstore.iec.ch/advsearchform

La recherche avancée permet de trouver des publications IEC en utilisant différents critères (numéro de référence, texte, comité d'études,...). Elle donne aussi des informations sur les projets et les publications remplacées ou retirées.

IEC Just Published - webstore.iec.ch/justpublished

Restez informé sur les nouvelles publications IEC. Just Published détaille les nouvelles publications parues. Disponible en ligne et aussi une fois par mois par email.

Electropedia - www.electropedia.org

Le premier dictionnaire en ligne de termes électroniques et électriques. Il contient 21 000 termes et définitions en anglais et en français, ainsi que les termes équivalents dans 16 langues additionnelles. Egalement appelé Vocabulaire Electrotechnique International (IEV) en ligne.

Glossaire IEC - std.iec.ch/glossary

67 000 entrées terminologiques électrotechniques, en anglais et en français, extraites des articles Termes et Définitions des publications IEC parues depuis 2002. Plus certaines entrées antérieures extraites des publications des CE 37, 77, 86 et CISPR de l'IEC.

Service Clients - webstore.iec.ch/csc

Si vous désirez nous donner des commentaires sur cette publication ou si vous avez des questions contactez-nous: sales@iec.ch.

INTERNATIONAL STANDARD

NORME INTERNATIONALE



Safety of machinery – Application of protective equipment to detect the presence of persons

Sécurité des machines – Application des équipements de protection à la détection de la présence de personnes

INTERNATIONAL
ELECTROTECHNICAL
COMMISSION

COMMISSION
ELECTROTECHNIQUE
INTERNATIONALE

ICS 13.110

ISBN 978-2-8322-6232-0

**Warning! Make sure that you obtained this publication from an authorized distributor.
Attention! Veuillez vous assurer que vous avez obtenu cette publication via un distributeur agréé.**

CONTENTS

FOREWORD.....	6
INTRODUCTION.....	8
1 Scope.....	10
2 Normative references	10
3 Terms, definitions and abbreviated terms	10
3.1 Terms and definitions.....	10
3.2 Abbreviated terms.....	19
4 Selection of protective measures	19
4.1 Procedure (relationship with ISO 12100).....	19
4.2 Machine characteristics	21
4.2.1 Suitability of protective equipment	21
4.2.2 Suitability of protective equipment as a trip device.....	21
4.3 Environmental characteristics	21
4.4 Uses of protective equipment.....	22
4.4.1 General	22
4.4.2 Trip function	23
4.4.3 Presence sensing function.....	24
4.4.4 Combination trip and presence sensing function.....	25
4.5 Human characteristics.....	25
4.5.1 General	25
4.5.2 Approach speed (K).....	25
4.5.3 Intrusion/encroachment factor (C).....	25
4.5.4 Ability to circumvent protective equipment	26
4.6 Protective equipment characteristics.....	26
4.6.1 ESPEs.....	26
4.6.2 Pressure sensitive mats and floors	29
4.7 Optional machine control system functions associated with the application of protective equipment.....	29
4.7.1 General	29
4.7.2 Stopping performance monitoring (SPM).....	30
4.7.3 Muting	30
4.7.4 Reinitiation of machine operation by the protective equipment.....	30
4.7.5 Start interlock	30
4.7.6 Restart interlock	30
4.7.7 External device monitoring (EDM).....	30
4.7.8 Provision of machine control functions.....	31
5 General application requirements	31
5.1 Positioning and configuration of the protective equipment detection zone	31
5.2 Integration with the safety-related control system.....	31
5.3 Performance of protective equipment.....	32
5.3.1 General	32
5.3.2 Classification of protective equipment.....	32
5.4 Stopping performance monitoring (SPM).....	34
5.5 Start interlock	34
5.6 Restart interlock.....	34
5.7 Muting.....	35

5.7.1	General	35
5.7.2	Muting to allow access by persons	36
5.7.3	Muting to allow access by materials	37
5.7.4	Mute dependent override	37
5.8	Reinitiation of machine operation by the protective equipment	38
6	Particular application requirements for specific protective equipment	40
6.1	AOPDs	40
6.1.1	General	40
6.1.2	Light beam device(s)	40
6.1.3	Light curtains	42
6.2	AOPDDRs	45
6.3	Vision based protective devices VBPD	46
6.4	Pressure-sensitive mats and floors	47
6.4.1	Pressure sensitive floors	47
6.4.2	Pressure sensitive mats	47
7	Inspection and test	48
7.1	General	48
7.2	Functional checks	49
7.3	Periodic inspection and test	50
7.4	Initial inspection and test	50
7.5	Application specific tests	51
8	Information for safe use	52
Annex A (informative)	Application examples	53
A.1	General	53
A.2	Protective equipment used as a trip device	53
A.3	Use of protective equipment as a combined trip and presence sensing device	54
A.3.1	Example 1	54
A.3.2	Example 2	54
A.3.3	Example 3: horizontal AOPD	55
A.3.4	Example 4: vertical AOPD	56
A.3.5	Example 5	57
A.4	Perimeter guarding	58
Annex B (informative)	Additional recommendations for the application of AOPDDRs	59
B.1	General	59
B.2	Example of the use of an AOPDDR on stationary machinery	61
B.3	Example of the use of an AOPDDR on an automatic guided vehicle (AGV)	62
B.4	AOPDDR used for the detection of the body or parts of a body with orthogonal approach	63
B.4.1	Detection of a whole body	63
B.4.2	Detection of parts of the body	63
B.5	Examples of the use of an AOPDDR as a whole-body trip device	63
B.6	Examples for the use of an AOPDDR as parts of a body trip device	65
Annex C (informative)	Application example of a vision based protective system (VBPDS)	67
Annex D (informative)	Examples for the configuration of photoelectric muting sensors when used to allow access by materials	69
D.1	General	69
D.2	Four beams	71

D.2.1	Four beams – Positioning of the sensors	71
D.2.2	Four beams – timing control	73
D.2.3	Four beams – sequence control	74
D.2.4	Four beams with additional swinging doors	74
D.2.5	Methods to avoid manipulation of the muting function	75
D.2.6	Connection of the sensors to a two input muting control	77
D.2.7	Two sensors – positioning of the sensors	78
D.2.8	Two sensors – timing control	81
D.2.9	Two muting sensor beams in combination with swinging doors	82
D.2.10	Height of the crossing point of the muting sensor beams	84
D.3	Two parallel muting sensor beams – exit only	85
D.4	Protection of conveyor systems working in a coordinated manner	88
Bibliography		90
Figure 1	– Relationship of this International Standard to other standards	9
Figure 2	– Risk reduction process	20
Figure 3	– Detection principle of through-beam AOPD	27
Figure 4	– Through-beam AOPD using mirrors	27
Figure 5	– Retro-reflective AOPD	27
Figure 6	– Detection principle of AOPDDR	28
Figure 7	– Detection principle of VBPDST	29
Figure 8	– Example of the effect of reflective surfaces	40
Figure 9	– Detection capability of single light beam device	42
Figure 10	– Detection capability of a multiple light beam device	42
Figure 11	– Example of use of blanking	44
Figure 12	– Example of reduced resolution	45
Figure A.1	– Protective equipment used as a trip device	53
Figure A.2	– Protective equipment used as combined trip and presence sensing device – Example 1	54
Figure A.3	– Protective equipment used as a combined trip and presence sensing device – Example 2	54
Figure A.4	– Horizontal AOPD	55
Figure A.5	– Vertical AOPD	56
Figure A.6	– Increased minimum distance	57
Figure A.7	– Additional mechanical protection	58
Figure A.8	– Use of a trip device	58
Figure B.1	– Example of the use of an AOPDDR on machinery	60
Figure B.2	– Example of the use of an AOPDDR on stationary machinery	61
Figure B.3	– Example of the use of an AOPDDR on an AGV	62
Figure B.4	– Use of an AOPDDR as a whole-body trip device – Example 1	63
Figure B.5	– Use of an AOPDDR as a whole-body trip device – Example 2	64
Figure B.6	– Use of an AOPDDR as parts of a body trip device – Example 1	65
Figure B.7	– Use of an AOPDDR as parts of a body trip device – Example 2	65
Figure C.1	– Application example of a VBPDST	68
Figure D.1	– T configuration with timing control	69

Figure D.2 – L configuration with timing control.....	70
Figure D.3 – Parallel beams with timing or sequence control	70
Figure D.4 – Four parallel beams with timing control.....	71
Figure D.5 – Positioning of the muting sensors to avoid muting by a person's body (plan view).....	72
Figure D.6 – Positioning of the muting sensors (side view)	72
Figure D.7 – Timing diagram: four parallel beams with timing control.....	73
Figure D.8 – Four beams: timing control and crossed beams (not recommended).....	73
Figure D.9 – Timing diagram: four beams and sequence control	74
Figure D.10 – Four beams with additional swinging doors.....	75
Figure D.11 – Timing diagram for mute enable signal (mute enable activated).....	75
Figure D.12 – Timing diagram for mute enable signal (mute enable not activated).....	76
Figure D.13 – Presence of the mute enable signal during more than one mute cycle	76
Figure D.14 – Avoidance of manipulation of the muting function (plan view)	77
Figure D.15 – Avoidance of manipulation of the muting function (front view).....	77
Figure D.16 – Connection of the muting sensors.....	78
Figure D.17 – Two sensors – Crossed beams	78
Figure D.18 – Two sensors – Crossed beams (risk of entering the hazardous zone without detection when $x > 200$ mm)	79
Figure D.19 – Positioning of the muting sensors	80
Figure D.20 – Detection of the test object	80
Figure D.21 – Timing diagram for two crossed beams (normal operation)	81
Figure D.22 – Timing diagram for two crossed beams (timeout)	81
Figure D.23 – Single swinging doors in combination with a two-beam muting system (correct position).....	82
Figure D.24 – Reaching hazardous zone behind the pallet (incorrect position of swinging doors)	83
Figure D.25 – Reaching hazardous zone in front of pallet (incorrect position of swinging doors)	84
Figure D.26 – Height of crossing point	85
Figure D.27 – Interruption of the beam by foot.....	85
Figure D.28 – Two muting sensor beams – exit only	86
Figure D.29 – Timing diagram; two muting sensor beams – exit only, muting terminated by the LSPE.....	86
Figure D.30 – Timing diagram; two muting sensor beams – exit only, muting terminated by the 4 s timer	87
Figure D.31 – Timing diagram, muting terminated by the muting timeout.....	87
Figure D.32 – Production line incorporating two conveyors (2 hazardous zones) (incorrect application)	88
Figure D.33 – Production line incorporating two conveyors(2 hazardous zones).....	89
Table 1 – ESPE Types and achievable PL or SIL.....	33
Table 2 – Beam heights for light beam devices	41
Table D.1 – Truth table, four beams – sequence control	74

INTERNATIONAL ELECTROTECHNICAL COMMISSION

**SAFETY OF MACHINERY – APPLICATION OF PROTECTIVE
EQUIPMENT TO DETECT THE PRESENCE OF PERSONS**

FOREWORD

- 1) The International Electrotechnical Commission (IEC) is a worldwide organization for standardization comprising all national electrotechnical committees (IEC National Committees). The object of IEC is to promote international co-operation on all questions concerning standardization in the electrical and electronic fields. To this end and in addition to other activities, IEC publishes International Standards, Technical Specifications, Technical Reports, Publicly Available Specifications (PAS) and Guides (hereafter referred to as "IEC Publication(s)"). Their preparation is entrusted to technical committees; any IEC National Committee interested in the subject dealt with may participate in this preparatory work. International, governmental and non-governmental organizations liaising with the IEC also participate in this preparation. IEC collaborates closely with the International Organization for Standardization (ISO) in accordance with conditions determined by agreement between the two organizations.
- 2) The formal decisions or agreements of IEC on technical matters express, as nearly as possible, an international consensus of opinion on the relevant subjects since each technical committee has representation from all interested IEC National Committees.
- 3) IEC Publications have the form of recommendations for international use and are accepted by IEC National Committees in that sense. While all reasonable efforts are made to ensure that the technical content of IEC Publications is accurate, IEC cannot be held responsible for the way in which they are used or for any misinterpretation by any end user.
- 4) In order to promote international uniformity, IEC National Committees undertake to apply IEC Publications transparently to the maximum extent possible in their national and regional publications. Any divergence between any IEC Publication and the corresponding national or regional publication shall be clearly indicated in the latter.
- 5) IEC itself does not provide any attestation of conformity. Independent certification bodies provide conformity assessment services and, in some areas, access to IEC marks of conformity. IEC is not responsible for any services carried out by independent certification bodies.
- 6) All users should ensure that they have the latest edition of this publication.
- 7) No liability shall attach to IEC or its directors, employees, servants or agents including individual experts and members of its technical committees and IEC National Committees for any personal injury, property damage or other damage of any nature whatsoever, whether direct or indirect, or for costs (including legal fees) and expenses arising out of the publication, use of, or reliance upon, this IEC Publication or any other IEC Publications.
- 8) Attention is drawn to the Normative references cited in this publication. Use of the referenced publications is indispensable for the correct application of this publication.
- 9) Attention is drawn to the possibility that some of the elements of this IEC Publication may be the subject of patent rights. IEC shall not be held responsible for identifying any or all such patent rights.

International Standard IEC 62046 has been prepared by IEC technical committee 44: Safety of machinery – Electrotechnical aspects.

This bilingual version (2018-11) corresponds to the monolingual English version, published in 2018-03.

This first edition cancels and replaces IEC TS 62046, published in 2008. This edition constitutes a technical revision.

This edition includes the following significant technical changes with respect to IEC TS 62046:2008:

- a) additional annexes relating to muting and vision systems,
- b) muting requirements have been updated,
- c) blanking requirements have been updated,
- d) addition of IEC 61496 series Types and capping the Safety Integrity level according to IEC 62061 and performance levels according to ISO 13849-1,

e) alignment to changes in IEC 61496 series.

The text of this International Standard is based on the following documents:

FDIS	Report on voting
44/803/FDIS	44/812/RVD

Full information on the voting for the approval of this International Standard can be found in the report on voting indicated in the above table.

The French version of this document has not been voted upon.

This document has been drafted in accordance with the ISO/IEC Directives, Part 2.

The committee has decided that the contents of this document will remain unchanged until the stability date indicated on the IEC website under "<http://webstore.iec.ch>" in the data related to the specific document. At this date, the document will be

- reconfirmed,
- withdrawn,
- replaced by a revised edition, or
- amended.

IMPORTANT – The 'colour inside' logo on the cover page of this publication indicates that it contains colours which are considered to be useful for the correct understanding of its contents. Users should therefore print this document using a colour printer.

INTRODUCTION

This International Standard provides requirements and information on the application of protective equipment, which employs (a) sensing device(s) to detect person(s), in order to reduce or minimize a risk from hazardous parts of machinery, without providing a physical barrier.

The objective of this document is to assist standards writing committees responsible for developing machine standards ("C" Standards), machine designers, manufacturers and refurbishers, machine safety certification organizations, workplace authorities and others on the proper application of protective equipment to machinery.

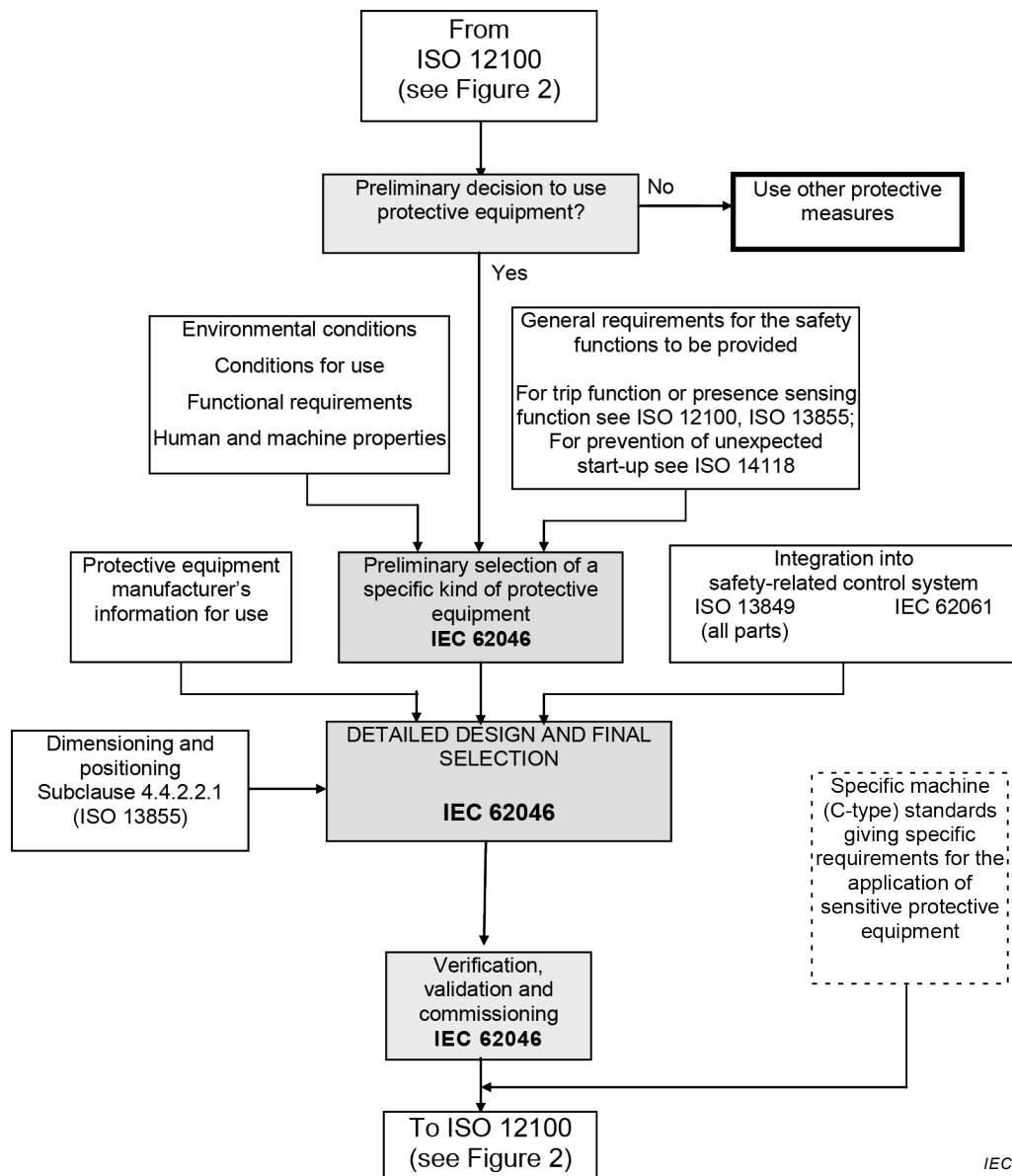
Figure 1 and Figure 2 show the general context and the intended use of this standard.

Clauses 1 to 5, 7 and 8 of this document apply to all protective equipment included in the scope, Clause 6 contains guidance for the application of specific kinds of protective equipment.

The principles of this document can be useful in the application of devices using other detection technologies but this document does not give specific requirements for devices other than those listed above.

This document considers devices standardised in the IEC 61506 series and the ISO 13856 series. Unless a product-specific safety-related standard for devices using other sensing technologies is published, their suitability as the sole means of protection from machine hazards is unknown. Great care should be taken in the selection and use of devices for which there is no product-specific safety-related standard because their behaviour, particularly under fault conditions, is not known to be sufficiently predictable.

An SILCL (SIL claim limit, see IEC 62061) or PL (Performance Level, see ISO 13849-1) or SIL (Safety Integrity Level, see IEC 61508) is not sufficient as an indication of a device's suitability for use as a safeguard. Suitability depends on appropriate sensing means, environmental conditions especially noise that can affect the detection capability, behaviour under fault conditions, etc



IEC

Figure 1 – Relationship of this International Standard to other standards

(see also Figure 2)

SAFETY OF MACHINERY – APPLICATION OF PROTECTIVE EQUIPMENT TO DETECT THE PRESENCE OF PERSONS

1 Scope

This International Standard specifies requirements for the selection, positioning, configuration and commissioning of protective equipment to detect the momentary or continued presence of persons in order to protect those persons from dangerous part(s) of machinery in industrial applications. This standard covers the application of electro-sensitive protective equipment (ESPE) specified in IEC 61496 (all parts) and pressure sensitive mats and floors specified in ISO 13856-1.

It takes into account the characteristics of the machinery, the protective equipment, the environment and human interaction by persons of 14 years and older.

This document includes informative annexes to provide guidance on the application of protective equipment to detect the presence of persons. These annexes contain examples to illustrate the principles of this standard. These examples are not intended to be the only solutions to a given application and are not intended to restrict innovation or advancement of technology. The examples are provided only as representative solutions to illustrate some of the concepts of integration of protective equipment, and have been simplified for clarity, so they may be incomplete.

2 Normative references

The following documents are referred to in the text in such a way that some or all of their content constitutes requirements of this document. For dated references, only the edition cited applies. For undated references, the latest edition of the referenced document (including any amendments) applies.

IEC 62061, *Safety of machinery - Functional safety of safety-related electrical, electronic and programmable electronic control systems*

ISO 12100:2010¹, *Safety of machinery – General principles for design – Risk assessment and risk reduction*

ISO 13849 (all parts), *Safety of machinery – Safety-related parts of control systems*

ISO 13855:2010, *Safety of machinery – Positioning of safeguards with respect to the approach speeds of parts of the human body*

3 Terms, definitions and abbreviated terms

3.1 Terms and definitions

For the purposes of this document, the following terms and definitions apply.

¹ ISO 12100:2010 constitutes a consolidation without technical changes of ISO 12100-1:2003, ISO 12100-2:2003, ISO 14121-1:2007 and related amendments. This consolidation does not require updates or revisions to type B- and type C- standards or other documents (e.g. for risk assessment) based on the previous standards.