

# INTERNATIONAL STANDARD

## NORME INTERNATIONALE



**Industrial communication networks –  
Installation of communication networks in industrial premises**

**Réseaux de communication industriels –  
Installation de réseaux de communication dans des locaux industriels**



## THIS PUBLICATION IS COPYRIGHT PROTECTED

Copyright © 2018 IEC, Geneva, Switzerland

All rights reserved. Unless otherwise specified, no part of this publication may be reproduced or utilized in any form or by any means, electronic or mechanical, including photocopying and microfilm, without permission in writing from either IEC or IEC's member National Committee in the country of the requester. If you have any questions about IEC copyright or have an enquiry about obtaining additional rights to this publication, please contact the address below or your local IEC member National Committee for further information.

Droits de reproduction réservés. Sauf indication contraire, aucune partie de cette publication ne peut être reproduite ni utilisée sous quelque forme que ce soit et par aucun procédé, électronique ou mécanique, y compris la photocopie et les microfilms, sans l'accord écrit de l'IEC ou du Comité national de l'IEC du pays du demandeur. Si vous avez des questions sur le copyright de l'IEC ou si vous désirez obtenir des droits supplémentaires sur cette publication, utilisez les coordonnées ci-après ou contactez le Comité national de l'IEC de votre pays de résidence.

IEC Central Office  
3, rue de Varembe  
CH-1211 Geneva 20  
Switzerland

Tel.: +41 22 919 02 11  
[info@iec.ch](mailto:info@iec.ch)  
[www.iec.ch](http://www.iec.ch)

### About the IEC

The International Electrotechnical Commission (IEC) is the leading global organization that prepares and publishes International Standards for all electrical, electronic and related technologies.

### About IEC publications

The technical content of IEC publications is kept under constant review by the IEC. Please make sure that you have the latest edition, a corrigenda or an amendment might have been published.

#### IEC Catalogue - [webstore.iec.ch/catalogue](http://webstore.iec.ch/catalogue)

The stand-alone application for consulting the entire bibliographical information on IEC International Standards, Technical Specifications, Technical Reports and other documents. Available for PC, Mac OS, Android Tablets and iPad.

#### IEC publications search - [webstore.iec.ch/advsearchform](http://webstore.iec.ch/advsearchform)

The advanced search enables to find IEC publications by a variety of criteria (reference number, text, technical committee,...). It also gives information on projects, replaced and withdrawn publications.

#### IEC Just Published - [webstore.iec.ch/justpublished](http://webstore.iec.ch/justpublished)

Stay up to date on all new IEC publications. Just published details all new publications released. Available online and also once a month by email.

#### Electropedia - [www.electropedia.org](http://www.electropedia.org)

The world's leading online dictionary of electronic and electrical terms containing 21 000 terms and definitions in English and French, with equivalent terms in 16 additional languages. Also known as the International Electrotechnical Vocabulary (IEV) online.

#### IEC Glossary - [std.iec.ch/glossary](http://std.iec.ch/glossary)

67 000 electrotechnical terminology entries in English and French extracted from the Terms and Definitions clause of IEC publications issued since 2002. Some entries have been collected from earlier publications of IEC TC 37, 77, 86 and CISPR.

#### IEC Customer Service Centre - [webstore.iec.ch/csc](http://webstore.iec.ch/csc)

If you wish to give us your feedback on this publication or need further assistance, please contact the Customer Service Centre: [sales@iec.ch](mailto:sales@iec.ch).

### A propos de l'IEC

La Commission Electrotechnique Internationale (IEC) est la première organisation mondiale qui élabore et publie des Normes internationales pour tout ce qui a trait à l'électricité, à l'électronique et aux technologies apparentées.

### A propos des publications IEC

Le contenu technique des publications IEC est constamment revu. Veuillez vous assurer que vous possédez l'édition la plus récente, un corrigendum ou amendement peut avoir été publié.

#### Catalogue IEC - [webstore.iec.ch/catalogue](http://webstore.iec.ch/catalogue)

Application autonome pour consulter tous les renseignements bibliographiques sur les Normes internationales, Spécifications techniques, Rapports techniques et autres documents de l'IEC. Disponible pour PC, Mac OS, tablettes Android et iPad.

#### Recherche de publications IEC -

[webstore.iec.ch/advsearchform](http://webstore.iec.ch/advsearchform)

La recherche avancée permet de trouver des publications IEC en utilisant différents critères (numéro de référence, texte, comité d'études,...). Elle donne aussi des informations sur les projets et les publications remplacées ou retirées.

#### IEC Just Published - [webstore.iec.ch/justpublished](http://webstore.iec.ch/justpublished)

Restez informé sur les nouvelles publications IEC. Just Published détaille les nouvelles publications parues. Disponible en ligne et aussi une fois par mois par email.

#### Electropedia - [www.electropedia.org](http://www.electropedia.org)

Le premier dictionnaire en ligne de termes électroniques et électriques. Il contient 21 000 termes et définitions en anglais et en français, ainsi que les termes équivalents dans 16 langues additionnelles. Egalement appelé Vocabulaire Electrotechnique International (IEV) en ligne.

#### Glossaire IEC - [std.iec.ch/glossary](http://std.iec.ch/glossary)

67 000 entrées terminologiques électrotechniques, en anglais et en français, extraites des articles Termes et Définitions des publications IEC parues depuis 2002. Plus certaines entrées antérieures extraites des publications des CE 37, 77, 86 et CISPR de l'IEC.

#### Service Clients - [webstore.iec.ch/csc](http://webstore.iec.ch/csc)

Si vous désirez nous donner des commentaires sur cette publication ou si vous avez des questions contactez-nous: [sales@iec.ch](mailto:sales@iec.ch).

# INTERNATIONAL STANDARD

## NORME INTERNATIONALE



**Industrial communication networks –  
Installation of communication networks in industrial premises**

**Réseaux de communication industriels –  
Installation de réseaux de communication dans des locaux industriels**

INTERNATIONAL  
ELECTROTECHNICAL  
COMMISSION

COMMISSION  
ELECTROTECHNIQUE  
INTERNATIONALE

ICS 25.040.40; 33.020; 35.240.50

ISBN 978-2-8322-6027-2

**Warning! Make sure that you obtained this publication from an authorized distributor.  
Attention! Veuillez vous assurer que vous avez obtenu cette publication via un distributeur agréé.**

## CONTENTS

FOREWORD.....	11
INTRODUCTION.....	13
1 Scope.....	16
2 Normative references .....	16
3 Terms, definitions, and abbreviated terms .....	19
3.1 Terms and definitions.....	19
3.2 Abbreviated terms.....	31
3.3 Conventions for installation profiles .....	32
4 Installation planning.....	33
4.1 General.....	33
4.1.1 Objective .....	33
4.1.2 Cabling in industrial premises .....	33
4.1.3 The planning process .....	35
4.1.4 Specific requirements for CPs.....	36
4.1.5 Specific requirements for generic cabling in accordance with ISO/IEC 11801-3 .....	36
4.2 Planning requirements .....	36
4.2.1 Safety.....	36
4.2.2 Security .....	37
4.2.3 Environmental considerations and EMC.....	37
4.2.4 Specific requirements for generic cabling in accordance with ISO/IEC 11801-3 .....	39
4.3 Network capabilities .....	39
4.3.1 Network topology.....	39
4.3.2 Network characteristics.....	41
4.4 Selection and use of cabling components .....	44
4.4.1 Cable selection.....	44
4.4.2 Connecting hardware selection.....	48
4.4.3 Connections within a channel/permanent link .....	50
4.4.4 Terminators .....	55
4.4.5 Device location and connection .....	56
4.4.6 Coding and labelling .....	56
4.4.7 Earthing and bonding of equipment and devices and shielded cabling .....	57
4.4.8 Storage and transportation of cables .....	67
4.4.9 Routing of cables.....	67
4.4.10 Separation of circuits .....	69
4.4.11 Mechanical protection of cabling components .....	70
4.4.12 Installation in special areas .....	71
4.5 Cabling planning documentation .....	71
4.5.1 Common description .....	71
4.5.2 Cabling planning documentation for CPs .....	71
4.5.3 Network certification documentation .....	72
4.5.4 Cabling planning documentation for generic cabling in accordance with ISO/IEC 11801-3 .....	72
4.6 Verification of cabling planning specification .....	72
5 Installation implementation .....	72
5.1 General requirements .....	72

5.1.1	Common description .....	72
5.1.2	Installation of CPs .....	72
5.1.3	Installation of generic cabling in industrial premises .....	72
5.2	Cable installation .....	72
5.2.1	General requirements for all cabling types .....	72
5.2.2	Installation and routing .....	78
5.2.3	Specific requirements for CPs.....	80
5.2.4	Specific requirements for wireless installation.....	80
5.2.5	Specific requirements for generic cabling in accordance with ISO/IEC 11801-3 .....	80
5.3	Connector installation .....	80
5.3.1	Common description .....	80
5.3.2	Shielded connectors .....	81
5.3.3	Unshielded connectors .....	81
5.3.4	Specific requirements for CPs.....	81
5.3.5	Specific requirements for wireless installation.....	81
5.3.6	Specific requirements for generic cabling in accordance with ISO/IEC 11801-3 .....	81
5.4	Terminator installation .....	82
5.4.1	Common description .....	82
5.4.2	Specific requirements for CPs.....	82
5.5	Device installation.....	82
5.5.1	Common description .....	82
5.5.2	Specific requirements for CPs.....	82
5.6	Coding and labelling .....	82
5.6.1	Common description .....	82
5.6.2	Specific requirements for CPs.....	82
5.7	Earthing and bonding of equipment and devices and shield cabling .....	82
5.7.1	Common description .....	82
5.7.2	Bonding and earthing of enclosures and pathways.....	83
5.7.3	Earthing methods .....	85
5.7.4	Shield earthing methods .....	87
5.7.5	Specific requirements for CPs.....	89
5.7.6	Specific requirements for generic cabling in accordance with ISO/IEC 11801-3 .....	89
5.8	As-implemented cabling documentation .....	90
6	Installation verification and installation acceptance test .....	90
6.1	General.....	90
6.2	Installation verification .....	90
6.2.1	General .....	90
6.2.2	Verification according to cabling planning documentation .....	91
6.2.3	Verification of earthing and bonding.....	92
6.2.4	Verification of shield earthing .....	93
6.2.5	Verification of cabling system .....	93
6.2.6	Cable selection verification .....	93
6.2.7	Connector verification .....	94
6.2.8	Connection verification .....	94
6.2.9	Terminator verification .....	96
6.2.10	Coding and labelling verification .....	96

6.2.11	Verification report .....	96
6.3	Installation acceptance test.....	96
6.3.1	General .....	96
6.3.2	Acceptance test of Ethernet-based cabling .....	98
6.3.3	Acceptance test of non-Ethernet-based cabling .....	100
6.3.4	Specific requirements for wireless installation.....	101
6.3.5	Acceptance test report.....	101
7	Installation administration.....	102
7.1	General.....	102
7.2	Fields covered by the administration .....	102
7.3	Basic principles for the administration system .....	102
7.4	Working procedures .....	102
7.5	Device location labelling .....	103
7.6	Component cabling labelling .....	103
7.7	Documentation.....	104
7.8	Specific requirements for administration .....	105
8	Installation maintenance and installation troubleshooting.....	105
8.1	General.....	105
8.2	Maintenance .....	105
8.2.1	Scheduled maintenance.....	105
8.2.2	Condition-based maintenance.....	107
8.2.3	Corrective maintenance .....	108
8.3	Troubleshooting .....	108
8.3.1	General description .....	108
8.3.2	Evaluation of the problem .....	108
8.3.3	Typical problems .....	109
8.3.4	Troubleshooting procedure .....	110
8.3.5	Simplified troubleshooting procedure .....	111
8.4	Specific requirements for maintenance and troubleshooting.....	112
Annex A (informative)	Overview of generic cabling for industrial premises .....	113
Annex B (informative)	MICE description methodology .....	114
B.1	General.....	114
B.2	Overview of MICE .....	114
B.3	Examples of use of the MICE concept.....	115
B.3.1	Common description .....	115
B.3.2	Examples of mitigation.....	115
B.4	Determining E classification .....	117
B.5	The MICE table.....	120
Annex C (informative)	Network topologies.....	122
C.1	Common description .....	122
C.2	Total cable demand .....	122
C.3	Maximum cable segment length .....	122
C.4	Maximum network length .....	122
C.5	Fault tolerance.....	122
C.5.1	General .....	122
C.5.2	Use of redundancy.....	122
C.5.3	Failure analysis for networks with redundancy .....	122
C.6	Network access for diagnosis convenience .....	123

C.7	Maintainability and on-line additions .....	123
Annex D (informative)	Connector tables .....	124
Annex E (informative)	Power networks with respect to electromagnetic interference – TN-C and TN-S approaches.....	137
Annex F (informative)	Conductor sizes in electrical cables.....	139
Annex G (informative)	Installed cabling verification checklists.....	141
G.1	General.....	141
G.2	Copper cabling verification checklist .....	141
G.3	Optical fibre cabling verification checklist.....	144
Annex H (normative)	Cord sets .....	146
H.1	General.....	146
H.2	Constructing cord sets .....	146
H.2.1	Straight through cord sets with M12-4 D-coding connectors.....	146
H.2.2	Crossover cord sets with M12-4 D-coding connectors.....	147
H.2.3	Straight through cord sets with 8-way modular connectors.....	147
H.2.4	Crossover cord sets with 8-way modular connectors.....	148
H.2.5	Straight conversion from one connector family to another.....	149
H.2.6	Crossover conversion from one connector family to another.....	149
H.2.7	Assignment of PMA signal to MDI and MDI-X inputs.....	150
H.2.8	Signal and pin assignment for MDI and TIA568.....	151
H.2.9	Signal and pin assignment for MDIX and TIA568B.....	151
H.2.10	Signal and pin assignment for MDIX and TIA568A.....	152
Annex I (informative)	Guidance for terminating cable ends.....	153
I.1	General.....	153
I.2	Guidance for terminating shielded twisted pair cable ends for 8-way modular plugs.....	153
I.3	Guidance for terminating unshielded twisted pair cable ends for 8-way modular plugs .....	155
I.4	Guidance for M12-4 D-coding connector installation .....	156
I.5	Guidance for terminating optical fibre cable ends.....	159
Annex J (informative)	Recommendations for bulkhead connection performance and channel performance with more than 4 connections in the channel.....	160
J.1	General.....	160
J.2	Recommendations .....	160
Annex K (informative)	Fieldbus data transfer testing .....	161
K.1	Background.....	161
K.2	Allowable error rates for control systems .....	161
K.2.1	Bit errors .....	161
K.2.2	Burst errors .....	161
K.3	Testing channel performance.....	162
K.4	Testing cable parameters.....	162
K.4.1	General .....	162
K.4.2	Generic cable testing.....	162
K.4.3	Fieldbus cable testing.....	162
K.5	Testing fieldbus data rate performance .....	163
K.5.1	General .....	163
K.5.2	Fieldbus test.....	163
K.5.3	Planning for fieldbus data rate testing.....	163
K.5.4	Fieldbus data rate test reporting template.....	164

K.5.5	Values for acceptable fieldbus performance.....	164
Annex L (informative)	Communication network installation work responsibility .....	165
L.1	General.....	165
L.2	Installation work responsibility .....	165
L.3	Installation work responsibility table.....	165
Annex M (informative)	Trade names of communication profiles .....	166
Annex N (informative)	Validation measurements .....	169
N.1	General.....	169
N.2	DCR measurements.....	169
N.2.1	Purpose of test .....	169
N.2.2	Assumptions .....	169
N.2.3	Measurements.....	169
N.2.4	Calculations.....	171
N.2.5	Measurement results .....	171
Annex O (informative)	End-to-end link .....	175
O.1	General.....	175
O.2	End-to-end link .....	175
O.3	E2E link normative description .....	176
O.4	E2E link measurement .....	178
Annex P (normative)	Temperature rise of cabling with remote powering.....	179
P.1	General.....	179
P.2	Scope .....	179
P.3	Temperature de-rating calculation.....	179
Bibliography	.....	181
Figure 1	– Industrial network installation link cycle .....	14
Figure 2	– Standards relationships.....	15
Figure 3	– Automation island cabling attached to elements of generic cabling.....	33
Figure 4	– Automation islands .....	34
Figure 5	– Automation island network external connections .....	35
Figure 6	– How to meet environmental conditions .....	38
Figure 7	– How enhancement, isolation and separation work together .....	39
Figure 8	– Basic physical topologies for passive networks .....	40
Figure 9	– Basic physical topologies for active networks.....	40
Figure 10	– Example of combination of basic topologies .....	40
Figure 11	– Basic reference implementation model .....	51
Figure 12	– Enhanced reference implementation model .....	52
Figure 13	– Equalisation and earthing conductor cross-sectional area versus maximum length .....	58
Figure 14	– Selection of the earthing and bonding systems.....	59
Figure 15	– Placement of equalisation conductors .....	61
Figure 16	– Impedance of the earthing conductors and equalisation conductors versus noise frequency .....	62
Figure 17	– Wiring for bonding and earthing in an equipotential configuration .....	63
Figure 18	– Wiring of the earths in a star earthing configuration.....	64
Figure 19	– Schematic diagram of a field device with direct earthing.....	65

Figure 20 – Schematic diagram of a field device with parallel RC circuit earthing.....	65
Figure 21 – Insert edge protector.....	74
Figure 22 – Use an uncoiling device and avoid forming loop.....	75
Figure 23 – Avoid torsion.....	75
Figure 24 – Maintain minimum bending radius.....	76
Figure 25 – Do not pull by the individual wires.....	76
Figure 26 – Use cable clamps with a large (wide) surface.....	76
Figure 27 – Cable gland with bending protection.....	77
Figure 28 – Spiral tube.....	77
Figure 29 – Separate cable pathways.....	80
Figure 30 – Impedance of the earthing circuit as a function of distance from the metallic pathway.....	83
Figure 31 – Use of flexible bonding straps at movable metallic pathways.....	84
Figure 32 – Surface preparation for earthing and bonding electromechanical connections.....	85
Figure 33 – Example of isolated bus bar.....	86
Figure 34 – Example of isolator for mounting DIN rails.....	87
Figure 35 – Parallel RC shield earthing.....	87
Figure 36 – Direct shield earthing.....	88
Figure 37 – Examples for shielding application.....	88
Figure 38 – Voltage offset mitigation.....	89
Figure 39 – First example of derivatives of shield earthing.....	89
Figure 40 – Second example of derivatives of shield earthing.....	89
Figure 41 – Installation verification process.....	91
Figure 42 – Test of earthing connections.....	92
Figure 43 – Pin and pair grouping assignments for two eight position IEC 60603-7 subparts and four position IEC 60603 series to IEC 61076-2-101 connectors.....	95
Figure 44 – Two pair 8-way modular connector.....	95
Figure 45 – Transposed pairs, split pairs and reversed pair.....	95
Figure 46 – Validation process.....	97
Figure 47 – Schematic representation of the channel.....	98
Figure 48 – Schematic representation of the permanent link.....	98
Figure 49 – Schematic representation of an E2E link.....	99
Figure 50 – Communication network maintenance.....	107
Figure 51 – Troubleshooting procedure.....	111
Figure 52 – Fault detection without special tools.....	112
Figure B.1 – MICE classifications.....	114
Figure B.2 – Example MICE classifications within a facility.....	115
Figure B.3 – Enhancement, isolation and separation.....	115
Figure B.4 – Example 1 of mitigation.....	116
Figure B.5 – Example 2 of mitigation.....	117
Figure B.6 – Frequency range of electromagnetic disturbance from common industrial devices.....	117
Figure B.7 – Example of a general guidance for separation versus EFT value.....	119

Figure E.1 – Four-wire power network (TN-C) .....	137
Figure E.2 – Five wire power network (TN-S) .....	138
Figure H.1 – Straight through cord sets with M12-4 D-coding connectors .....	146
Figure H.2 – Straight through cord sets with 8-way modular connectors, 8 poles .....	147
Figure H.3 – Straight through cord sets with 8-way modular connectors, 4 poles .....	148
Figure H.4 –M12-8 X-coding connector .....	150
Figure I.1 – Stripping the cable jacket .....	153
Figure I.2 – Example of wire preparation for type A cables .....	154
Figure I.3 – 8-way modular plug .....	154
Figure I.4 – Inserting the cable into the connector body .....	155
Figure I.5 – Crimping the connector .....	155
Figure I.6 – Example of a cable preparation for type A wiring .....	156
Figure I.7 – Connector components .....	157
Figure I.8 – Cable preparation .....	157
Figure I.9 – Connector wire gland, nut and shell on the cable .....	157
Figure I.10 – Conductors preparation .....	157
Figure I.11 – Jacket removal .....	157
Figure I.12 – Shield preparation .....	158
Figure I.13 – Conductors preparation .....	158
Figure I.14 – Installing conductors in connector .....	158
Figure I.15 – Assembling the body of the connector .....	158
Figure I.16 – Final assembling .....	159
Figure N.1 – Loop resistance measurement wire to wire .....	169
Figure N.2 – Loop resistance measurement wire 1 to shield .....	170
Figure N.3 – Loop resistance measurement wire 2 to shield .....	170
Figure N.4 – Resistance measurement for detecting wire shorts .....	170
Figure N.5 – Resistance measurement between wire 1 and wire 2 .....	170
Figure N.6 – Validation of the cable DCR .....	172
Figure N.7 – Conclusion for cable open or shorts .....	173
Figure N.8 – Determination of proper cable terminator value .....	174
Figure O.1 – Channel according to ISO/IEC 11801 .....	175
Figure O.2 – End-to-end link .....	176
Figure O.3 – One segment, two Connection E2E link .....	176
Figure O.4 – Two Segment, three Connection E2E link .....	176
Figure O.5 – Three Segment, one Connection bulkheads, four Connection E2E link .....	177
Figure O.6 – Three Segment, two Connection, six Connection E2E link .....	177
Figure O.7 – Three Segment, four Connection E2E link .....	177
Figure O.8 – Four Segment, five Connection E2E link .....	177
Figure O.9 – Five Segment, six Connection E2E link .....	177
Table 1 – Basic network characteristics for balanced cabling not based on Ethernet .....	42
Table 2 – Network characteristics for balanced cabling based on Ethernet .....	42
Table 3 – Network characteristics for optical fibre cabling .....	43

Table 4 – Information relevant to copper cable: fixed cables .....	45
Table 5 – Information relevant to copper cable: cords .....	45
Table 6 – Information relevant to optical fibre cables .....	46
Table 7 – Connectors for balanced cabling CPs based on Ethernet.....	48
Table 8 – Connectors for copper cabling CPs not based on Ethernet.....	49
Table 9 – Optical fibre connecting hardware .....	49
Table 10 – Relationship between FOC and fibre types (CP x/y) .....	49
Table 11 – Basic reference implementation formulas .....	51
Table 12 – Enhanced reference implementation formulas .....	53
Table 13 – Correction factor Z for operating temperature above 20 °C.....	53
Table 14 – Equalisation and earthing conductor sizing and length .....	60
Table 15 – Bonding straps cross-section.....	60
Table 16 – Bonding plates surface protection.....	60
Table 17 – Cable circuit types and minimum distances .....	70
Table 18 – Parameters for balanced cables .....	73
Table 19 – Parameters for silica optical fibre cables .....	73
Table 20 – Parameters for POF optical fibre cables .....	73
Table 21 – Parameters for hard clad silica optical fibre cables .....	74
Table 22 – Typical problems in a network with balanced cabling.....	109
Table 23 – Typical problems in a network with optical fibre cabling.....	110
Table B.1 – Example 1 of targeted MICE area .....	116
Table B.2 – Example 2 of targeted MICE area .....	116
Table B.3 – Relationship between electromagnetic disturbance-generating devices and “E” classification .....	118
Table B.4 – Coupling mechanism for some interfering devices.....	119
Table B.5 – MICE definition .....	120
Table D.1 – Conventions for colour code used in the connector table .....	124
Table D.2 – Pin/pair assignment and colour scheme .....	125
Table D.3 – 8-way modular connector .....	126
Table D.4 – M12-4 A-coding connector .....	127
Table D.5 – M12-4 D-coding connector .....	128
Table D.6 – M12-5 A-coding connector .....	129
Table D.7 – M12-5 B-coding connector .....	130
Table D.8 – SubD connector .....	131
Table D.9 – 7/8-16 UN-2B THD / M18 connector.....	132
Table D.10 – Open style connector .....	133
Table D.11 – M12-8 X-coding connector .....	134
Table D.12 – BNC connector.....	135
Table D.13 – TNC connector.....	136
Table F.1 – American wire gauge system and kcmil .....	139
Table G.1 – Copper cabling verification checklist.....	142
Table G.2 – Earthing and bonding measurements checklist .....	143
Table G.3 – Signatures for Table G.1 and Table G.2 checklists .....	143

Table G.4 – Checklist for special checks for non-Ethernet base CPs.....	144
Table G.5 – Signatures for Table G.4 checklist .....	144
Table G.6 – Optical fibre cabling verification checklist .....	145
Table G.7 – Signatures for Table G.6 checklist .....	145
Table H.1 – M12-4 D-coding pin/pair assignment .....	147
Table H.2 – M12-4 D-coding to M12-4 D-coding crossover pin/pair assignment .....	147
Table H.3 – 8-way modular pin/pair assignment .....	148
Table H.4 – 8-way modular crossover pin/pair assignment.....	149
Table H.5 – Connectivity pin assignment .....	149
Table H.6 – M12-4 to 8-way modular crossover pin pair assignment .....	150
Table H.7 – Assignment of PMA signal to MDI and MDI-X pin outs .....	150
Table H.8 – Signal and pin/pair assignment for MDI and TIA 568B.....	151
Table H.9 – Signal and pin/pair assignment for MDI and T568A.....	151
Table H.10 – Signal and pin/pair assignment for MDIX and T568B.....	152
Table H.11 – Signal and pin/pair assignment for MDIX and T568A.....	152
Table J.1 – Transmission requirements for more than 4 connections in a channel.....	160
Table M.1 – Trade names of CPFs and CPs .....	167
Table P.1 – Parameters used to calculate the temperature derating.....	180

## INTERNATIONAL ELECTROTECHNICAL COMMISSION

**INDUSTRIAL COMMUNICATION NETWORKS –****Installation of communication networks in industrial premises**

## FOREWORD

- 1) The International Electrotechnical Commission (IEC) is a worldwide organization for standardization comprising all national electrotechnical committees (IEC National Committees). The object of IEC is to promote international co-operation on all questions concerning standardization in the electrical and electronic fields. To this end and in addition to other activities, IEC publishes International Standards, Technical Specifications, Technical Reports, Publicly Available Specifications (PAS) and Guides (hereafter referred to as “IEC Publication(s)”). Their preparation is entrusted to technical committees; any IEC National Committee interested in the subject dealt with may participate in this preparatory work. International, governmental and non-governmental organizations liaising with the IEC also participate in this preparation. IEC collaborates closely with the International Organization for Standardization (ISO) in accordance with conditions determined by agreement between the two organizations.
- 2) The formal decisions or agreements of IEC on technical matters express, as nearly as possible, an international consensus of opinion on the relevant subjects since each technical committee has representation from all interested IEC National Committees.
- 3) IEC Publications have the form of recommendations for international use and are accepted by IEC National Committees in that sense. While all reasonable efforts are made to ensure that the technical content of IEC Publications is accurate, IEC cannot be held responsible for the way in which they are used or for any misinterpretation by any end user.
- 4) In order to promote international uniformity, IEC National Committees undertake to apply IEC Publications transparently to the maximum extent possible in their national and regional publications. Any divergence between any IEC Publication and the corresponding national or regional publication shall be clearly indicated in the latter.
- 5) IEC itself does not provide any attestation of conformity. Independent certification bodies provide conformity assessment services and, in some areas, access to IEC marks of conformity. IEC is not responsible for any services carried out by independent certification bodies.
- 6) All users should ensure that they have the latest edition of this publication.
- 7) No liability shall attach to IEC or its directors, employees, servants or agents including individual experts and members of its technical committees and IEC National Committees for any personal injury, property damage or other damage of any nature whatsoever, whether direct or indirect, or for costs (including legal fees) and expenses arising out of the publication, use of, or reliance upon, this IEC Publication or any other IEC Publications.
- 8) Attention is drawn to the Normative references cited in this publication. Use of the referenced publications is indispensable for the correct application of this publication.
- 9) Attention is drawn to the possibility that some of the elements of this IEC Publication may be the subject of patent rights. IEC shall not be held responsible for identifying any or all such patent rights.

International Standard IEC 61918 has been prepared by subcommittee 65C: Industrial networks, of IEC technical committee 65: Industrial-process measurement, control and automation.

This fourth edition cancels and replaces the third edition published in 2013. This edition constitutes a technical revision.

This edition includes the following significant technical changes with respect to the previous edition:

- a) the reference to ISO/IEC 24702 has been replaced with reference to the new ISO/IEC 11801-3; this affects Table 2;
- b) some terms and abbreviated terms have been modified in Clause 3;
- c) Subclauses 4.1.2, 4.4.2.5, 4.4.3.4.1 and 5.7 have been updated;
- d) Figure 2 and Figure 3 have been updated; Figure 13, Figure 16, Figure 30 and Figure 49 have been added;

- e) Table 7 has been updated;
- f) Annex D and Annex M have been extended to cover additional communication profile families; Annex H has been extended to cover the M12-8 X-coding connector use;
- g) Annex O has been modified by including references to the new edition of the ISO/IEC 11801 series, ISO/IEC TR 11801-9902 and ISO/IEC 14763-4;
- h) Annex P has been added.

This standard is to be used in conjunction with the IEC 61784-5 series with regard to the installation of communication profiles (CPs).

Those standards of the IEC 61784-5 series which are still specified for use in conjunction with IEC 61918:2013 can also be used in conjunction with this edition, provided that the user takes into account the fact that the reference to ISO/IEC 24702 has been replaced with a reference to ISO/IEC 11801-3:2017.

NOTE This solution applies for the installation profiles that are affected only by this modified reference.

This standard is referenced by ISO/IEC 14763-2, which covers installation of generic cabling outside the automation islands in industrial premises.

This standard was developed in cooperation with ISO/IEC JTC1/SC25 which is responsible for the ISO/IEC 11801 series.

The text of this International Standard is based on the following documents:

FDIS	Report on voting
65C/928/FDIS	65C/933/RVD

Full information on the voting for the approval of this International Standard can be found in the report on voting indicated in the above table.

This document has been drafted in accordance with the ISO/IEC Directives, Part 2.

The committee has decided that the contents of this document will remain unchanged until the stability date indicated on the IEC website under "<http://webstore.iec.ch>" in the data related to the specific document. At this date, the document will be

- reconfirmed,
- withdrawn,
- replaced by a revised edition, or
- amended.

**IMPORTANT – The 'colour inside' logo on the cover page of this document indicates that it contains colours which are considered to be useful for the correct understanding of its contents. Users should therefore print this document using a colour printer.**

## INTRODUCTION

Process and factory automation rely increasingly on communication networks and fieldbuses that are inherently designed to cope with the specific environmental conditions of the industrial premises. The networks and fieldbuses provide for an effective integration of applications among the several functional units of the plant/factory. One of the benefits of integrating field-generated data with higher-level management systems is to reduce production costs. At the same time, integrated data helps to maintain or even increase the quantity and quality of production. A correct network installation is an important prerequisite for communications availability, reliability, and performance. This requires proper consideration of safety and security conditions and environmental aspects such as mechanical, liquid, particulate, climatic, chemicals and electromagnetic interference.

The specifications of these communication networks are provided in the following documents.

ISO/IEC 11801-3 specifies design of generic telecommunications infrastructures within industrial premises and provides the foundations for some of the transmission performance specifications of this document. ISO/IEC 11801-3 specifies only the raw bandwidth capability of a channel; it does not specify useful data transfer rate for a specific network using that channel or expected errors after taking account of interference during the communication process, as is needed for industrial automation.

The IEC 61158 fieldbus standard and IEC 62026-3 and their companion standard IEC 61784-1 and IEC 61784-2 jointly specify several Communication Profiles (CPs) suitable for industrial automation. These CPs specify a raw bandwidth capability and in addition, they specify bit modulation and encoding rules for their fieldbus. Some profiles also specify target levels for useful data transfer rate, and maximum values for errors caused by interference during the communication process.

This document provides a common point of reference for the installation of the media of most used industrial communication networks for most industrial sites.

This document provides a consistent set of installation rules for industrial automation islands where control applications reside. In addition, it offers support for the definition and installation of the interfaces between automation island networks and generic cabling.

One of the problems it seeks to solve is the situation created when different parts of a large automation site are provided by suppliers that use non-homogeneous installation guidelines having different structures and contents. This lack of consistency greatly increases the potential for errors and mismatch situations liable to compromise the communication system.

This document was developed by harmonising the approaches of several user groups and industrial consortia.

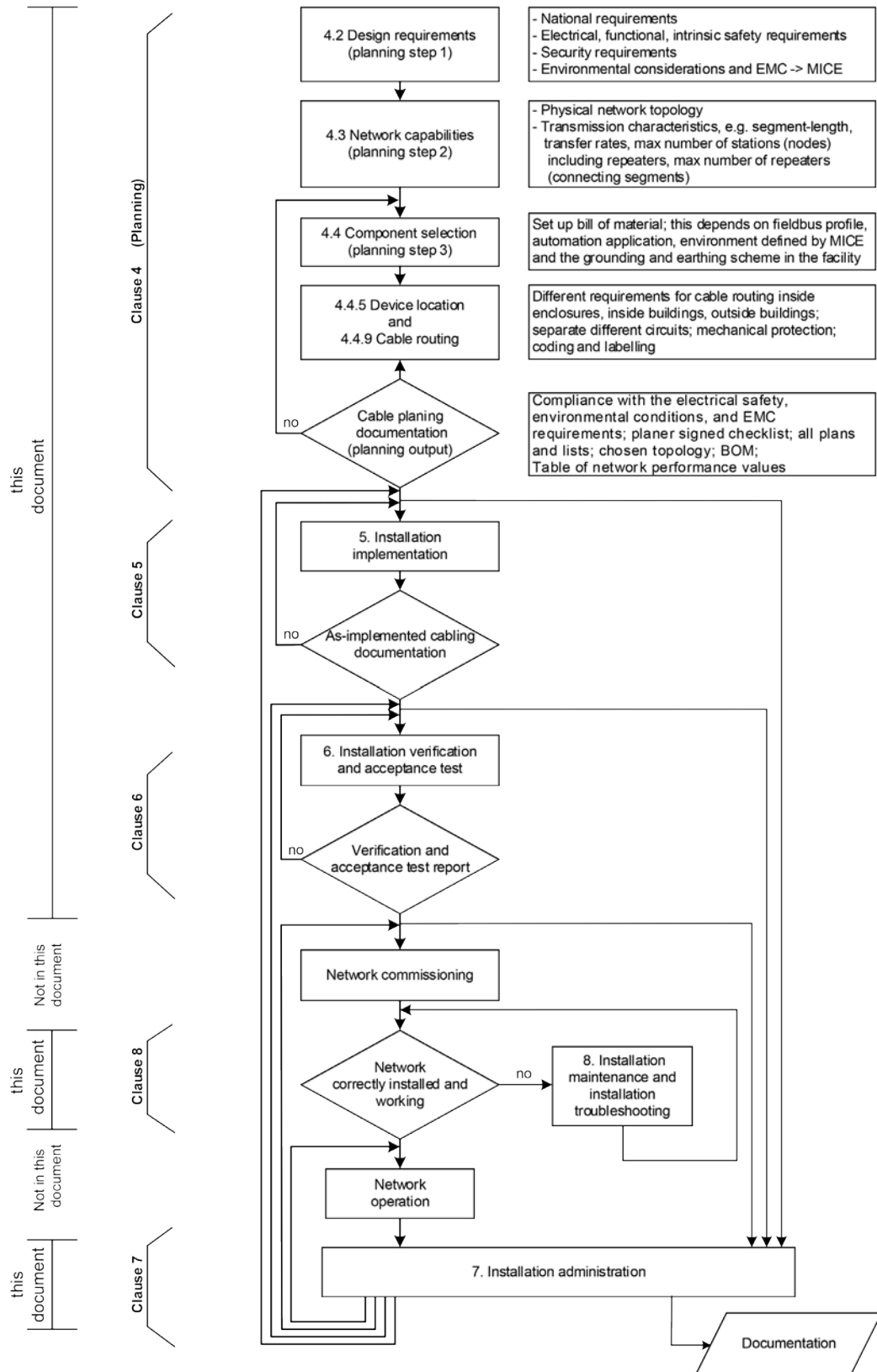
The document covers the life cycle of an installation in the following clauses (see the map of the document in Figure 1):

- Clause 4: Installation planning;
- Clause 5: Installation implementation;
- Clause 6: Installation verification and acceptance test;
- Clause 7: Installation administration;
- Clause 8: Installation maintenance and installation troubleshooting.

The methods described in these clauses are written in such a way as to provide installation guidance for a wide range of technician skills.

IEC 61918 Installation lifecycle

V2.0 /REL



IEC

Figure 1 – Industrial network installation life cycle

The installation of a communication system is supported by this document used in conjunction with the relevant installation profile. The installation profile establishes the technology-specific

requirements in terms of which requirements apply as they are in this document, or which have been extended, modified, or replaced.

For the fieldbuses that are defined in the IEC 61784 (all parts) as communication profiles (CPs) of the communication profile families (CPF), the installation is specified in the installation profiles that are available in the IEC 61784-5-n documents, where n is the CPF number.

IEC 61158-1 describes the relationship between the fieldbus and the CPs and the relevant installation profiles (see Figure 2).

Those documents of IEC 61784-5 (all parts) that are still specified for use in conjunction with IEC 61918:2013 can also be used in conjunction with this edition 2018, provided that the user takes into account the fact that the reference to ISO/IEC 24702 has been replaced with a reference to ISO/IEC 11801-3:2017.

NOTE This solution applies for the Installation profiles that are affected only by this modified reference

For the installation of generic cabling in industrial premises, IEC 61918 is referenced to by ISO/IEC 14763-2 (see Figure 2).

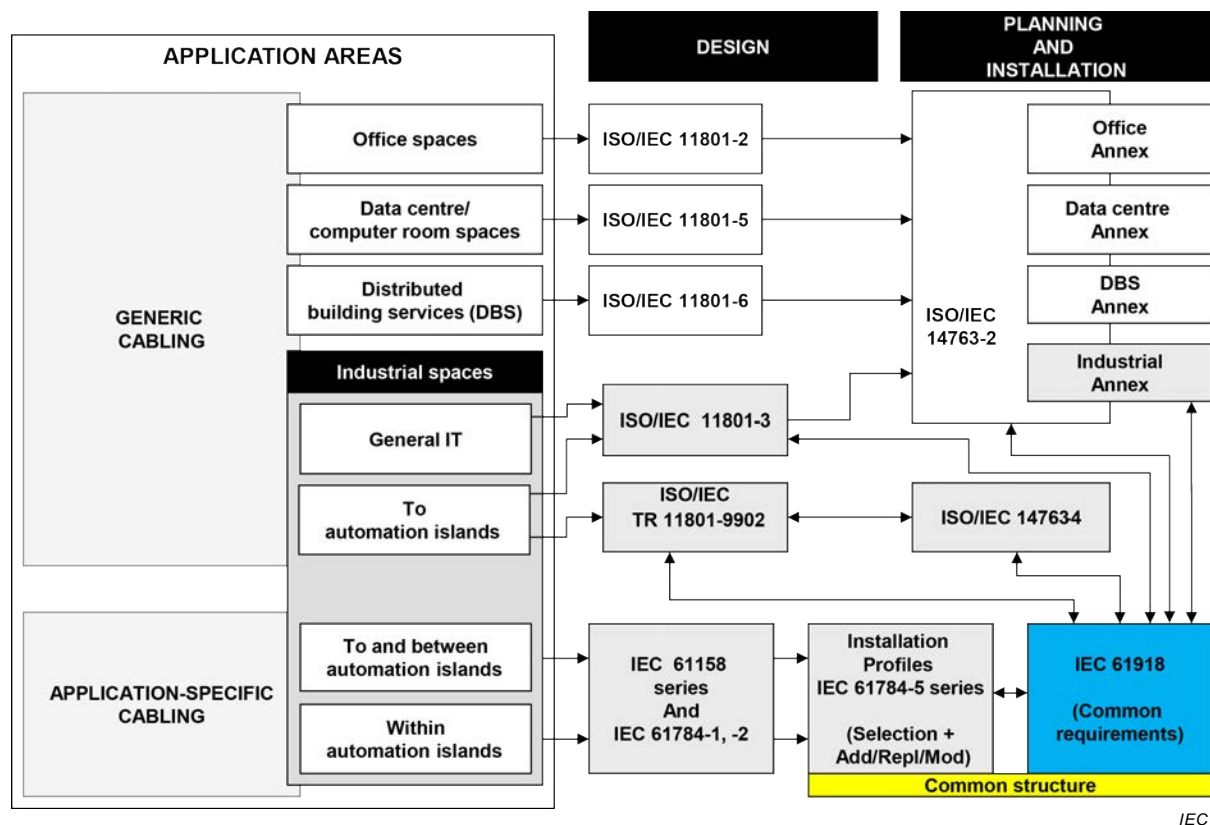


Figure 2 – Standards relationships

One of the advantages of this structure is that the users of a network know which installation requirements are common to most networks and which are specific to a particular network.

Every single plant/factory has its own installation needs in accordance with the specific critical conditions that apply to the specific application. This document and its companion standards described above provide a set of mandatory installation requirements ("shalls") and a number of recommendations ("shoulds"). It is up to the owner of the specific industrial enterprise to explicitly request that the cabling installation be implemented in accordance with these standards and to list all recommendations that shall be considered as mandatory requirements for the specific case.

## INDUSTRIAL COMMUNICATION NETWORKS –

### Installation of communication networks in industrial premises

#### 1 Scope

This document specifies basic requirements for the installation of media for communication networks within and between the automation islands, of industrial sites. This document covers balanced and optical fibre cabling. It also covers the cabling infrastructure for wireless media, but not the wireless media itself. Additional media are covered in IEC 61784-5 (all parts).

This document is a companion standard to the communication networks of the industrial automation islands and especially to the communication networks specified in IEC 61158 (all parts) and IEC 61784 (all parts).

In addition, this document covers the connection between the generic telecommunications cabling specified in ISO/IEC 11801-3 and the specific communication cabling of an automation island, where an automation outlet (AO) replaces the telecommunication outlet (TO) of ISO/IEC 11801-3.

NOTE If the interface used at the AO does not conform to that specified for the TO of ISO/IEC 11801-3, the cabling no longer conforms to ISO/IEC 11801-3 although certain features, including performance, of generic cabling may be retained.

This document provides guidelines that cope with the critical aspects of the industrial automation area (safety, security and environmental aspects such as mechanical, liquid, particulate, climatic, chemicals and electromagnetic interference).

This document does not recognise implementations of power distribution with or through Ethernet balanced cabling systems.

This document deals with the roles of planner, installer, verifier, and acceptance test personnel, administration and maintenance personnel and specifies the relevant responsibilities and/or gives guidance.

#### 2 Normative references

The following documents are referred to in the text in such a way that some or all of their content constitutes requirements of this document. For dated references, only the edition cited applies. For undated references, the latest edition of the referenced document (including any amendments) applies.

IEC 60364-1:2005, *Low-voltage electrical installations – Part 1: Fundamental principles, assessment of general characteristics, definitions*

IEC 60364-4-41, *Low-voltage electrical installations – Part 4-41: Protection for safety – Protection against electric shock*

IEC 60364-4-44, *Low-voltage electrical installations – Part 4-44: Protection for safety – Protection against voltage disturbances and electromagnetic disturbances*

IEC 60364-5-54, *Low-voltage electrical installations – Part 5-54: Selection and erection of electrical equipment – Earthing arrangements and protective conductors*