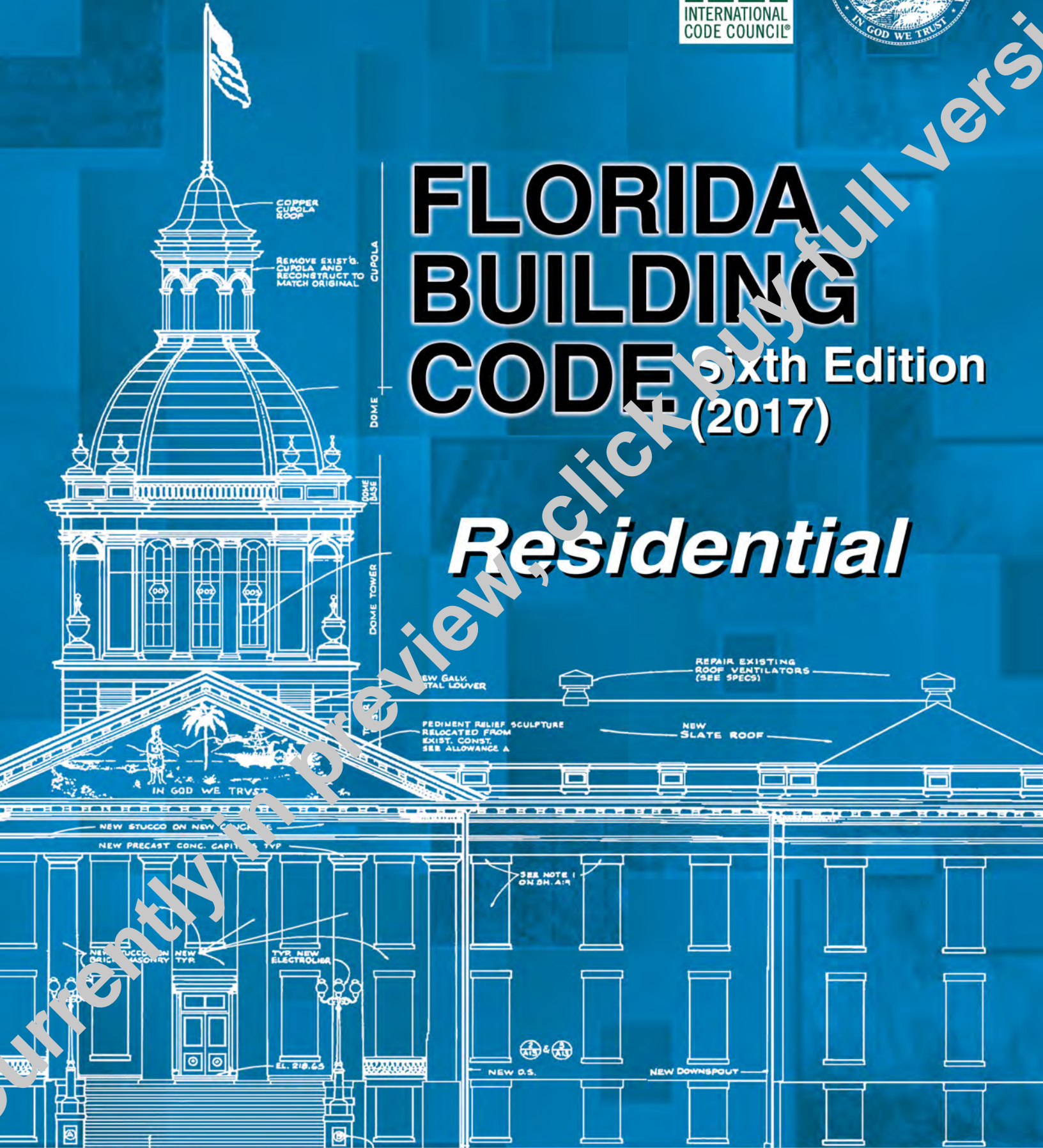




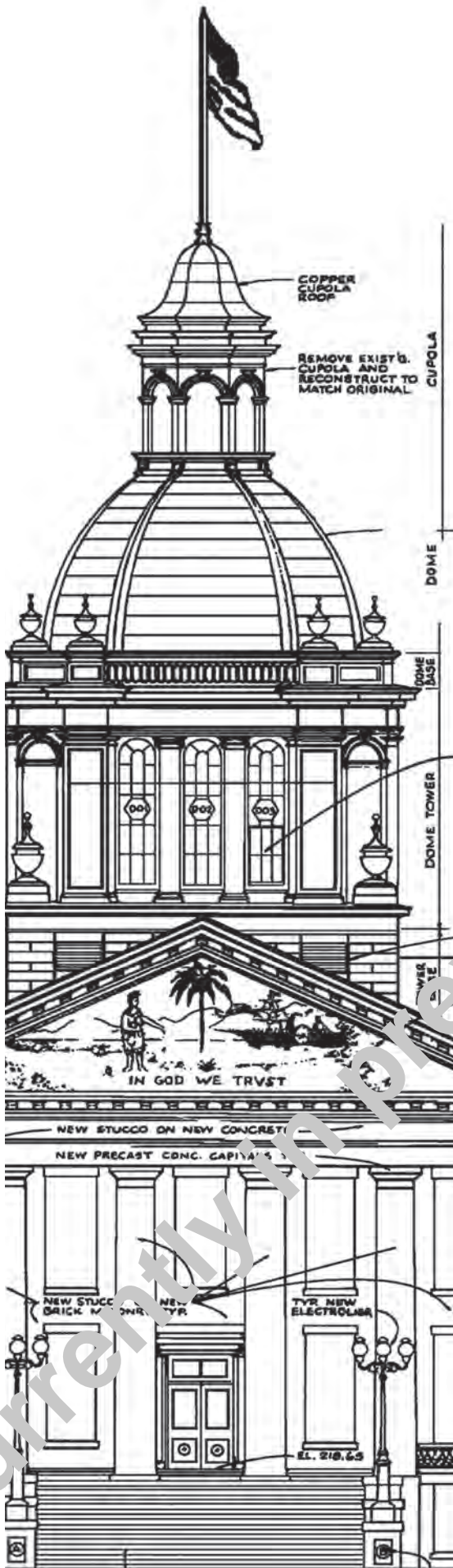
# FLORIDA BUILDING CODE

Sixth Edition  
(2017)

## *Residential*



Currently in Preview, click for full version

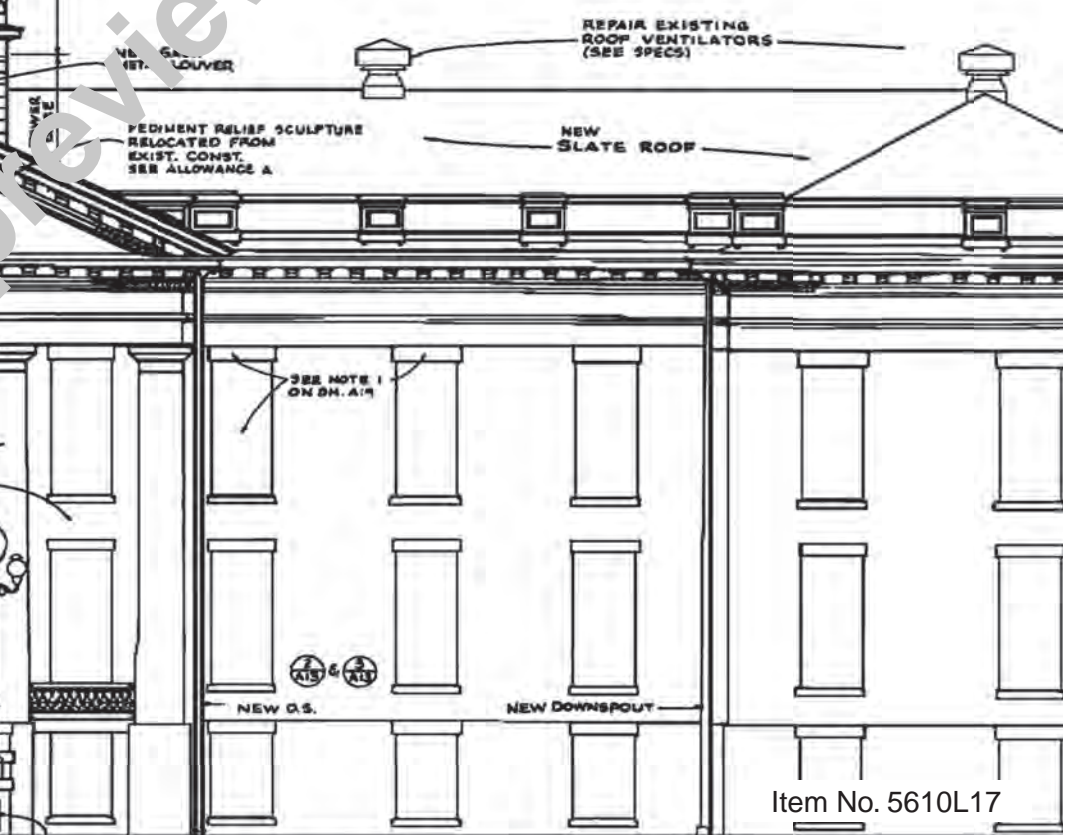


# FLORIDA BUILDING CODE

Sixth Edition (2017)

## Residential

Currently in Preview, Click buy full version



Florida Building Code, Residential, 6th Edition (2017)

First Printing: July 2017

ISBN: 978-1-60983-692-4

COPYRIGHT © 2017  
by  
INTERNATIONAL CODE COUNCIL, INC.

ALL RIGHTS RESERVED. This *Florida Building Code, Residential, 6th Edition (2017)* contains substantial copyrighted materials from the 2015 *International Residential Code*<sup>®</sup>, 2nd printing, which is a copyrighted work owned by the International Code Council, Inc., that is © 2015 International Code Council, Inc. ALL RIGHTS RESERVED. Without advance written permission from the copyright owner, no part of this work may be reproduced, distributed or transmitted in any form or by any means, including, without limitation, electronic, optical or mechanical means (by way of example, and not limitation, photocopying, or recording or by an information storage retrieval system). For information on use rights and permissions, please contact: Publications, 1051 Crossmoor Road, Country Club Hills, IL 60478. Phone 1-888-ICC-SAFE (422-7233).

The following trademarks: “International Code Council,” the “International Code Council” logo, “ICC,” the “ICC” logo, the “International Residential Code,” and the “IRC” are trademarks of the International Code Council, Inc., and may not be used without permission.

PRINTED IN THE U.S.A

# PREFACE

## History

The State of Florida first mandated statewide building codes during the 1970s at the beginning of the modern construction boom. The first law required all municipalities and counties to adopt and enforce one of the four state-recognized model codes known as the “state minimum building codes.” During the early 1990s a series of natural disasters, together with the increasing complexity of building construction regulation in vastly changed markets, led to a comprehensive review of the state building code system. The study revealed that building code adoption and enforcement was inconsistent throughout the state and those local codes thought to be the strongest proved inadequate when tested by major hurricane events. The consequences of the building code system failure were devastation to lives and economies and a statewide property insurance crisis. The response was a reform of the state building construction regulatory system that placed emphasis on uniformity and accountability.

The 1998 Florida Legislature amended Chapter 553, *Florida Statutes* (FS), Building Construction Standards, to create a single state building code that is enforced by local governments. As of March 1, 2002, the *Florida Building Code*, which is developed and maintained by the Florida Building Commission, supersedes all local building codes. The *Florida Building Code* is updated every three years and may be amended annually to incorporate interpretations and clarifications.

## Scope

The *Florida Building Code* is based on national model building codes and national consensus standards which are amended where necessary for Florida’s specific needs. The code incorporates all building construction-related regulations for public and private buildings in the State of Florida other than those specifically exempted by Section 553.73, *Florida Statutes*. It has been harmonized with the *Florida Fire Prevention Code*, which is developed and maintained by the Department of Financial Services, Office of the State Fire Marshal, to establish unified and consistent standards.

The base codes for the *Florida Building Code*, 6th Edition (2017) include: the 2015 editions of the *International Building Code*®; the *International Plumbing Code*®; the *International Mechanical Code*®; the *International Fuel Gas Code*®; the *International Residential Code*®; the *International Existing Building Code*®; the *International Energy Conservation Code*®; the *National Electrical Code*, 2014 edition; or substantive criteria from ASHRAE Standard 90.1-2013. State and local codes adopted and incorporated into the code include the *Florida Building Code, Accessibility*, and special hurricane protection standards for the High-Velocity Hurricane Zone.

The code is composed of nine main volumes: the *Florida Building Code, Building*, which also includes state regulations for licensed facilities; the *Florida Building Code, Plumbing*; the *Florida Building Code, Mechanical*; the *Florida Building Code, Fuel Gas*; the *Florida Building Code, Existing Building*; the *Florida Building Code, Residential*; the *Florida Building Code, Energy Conservation*; the *Florida Building Code, Accessibility* and the *Florida Building Code, Test Protocols for High-Velocity Hurricane Zones*. Chapter 27 of the *Florida Building Code, Building*, adopts the *National Electrical Code*, NFPA 70, by reference.

Under certain strictly defined conditions, local governments may amend requirements to be more stringent than the code. All local amendments to the *Florida Building Code* must be adopted by local ordinance and reported to the Florida Building Commission then posted on [www.florida-building.org](http://www.florida-building.org) in Legislative format for a month before being enforced. Local amendments to the *Florida Building Code* and the *Florida Fire Prevention Code* may be obtained from the Florida Building Commission web site, or from the Florida Department of Business and Professional Regulation or the Florida Department of Financial Services, Office of the State Fire Marshal, respectively.

## Adoption and Maintenance

The *Florida Building Code* is adopted and updated with new editions triennially by the Florida Building Commission. It is amended annually to incorporate interpretations, clarifications and to update standards. Minimum requirements for permitting, plans review and inspections are established by the code, and local jurisdictions may adopt additional administrative requirements that are more stringent. Local technical amendments are subject to strict criteria established by Section 553.73, FS. They are subject to Commission review and adoption into the code or repeal when the code is updated triennially and are subject to appeal to the Commission according to the procedures established by Section 553.73, FS.

Eleven Technical Advisory Committees (TACs), which are constituted consistent with American National Standards Institute (ANSI) Guidelines, review proposed code changes and clarifications of the code and make recommendations to the Commission. These TACs whose members are constituted consistent with American National Standards Institute (ANSI) Guidelines include: Accessibility; Joint Building Fire (a joint committee of the Commission and the State Fire Marshal); Building Structural; Code Administration/ Enforcement; Electrical; Energy; Mechanical; Plumbing and Fuel Gas; Roofing; Swimming Pool; and Special Occupancy (state agency construction and facility licensing regulations).

The Commission may only issue official code clarifications using procedures of Chapter 120, *Florida Statutes*. To obtain such a clarification, a request for a Declaratory Statement (DEC) must be made to the Florida Building Commission in a manner that establishes a clear set of facts and circumstances and identifies the section of the code in question. Requests are analyzed by staff, reviewed by the appropriate Technical Advisory Committee, and sent to the Florida Building Commission for action. These interpretations establish precedents for situations having similar facts and circumstances and are typically incorporated into the code in the next code amendment cycle. Non-binding opinions are available from the Building Officials Association of Florida's web site ([www.BOAF.net](http://www.BOAF.net)) and a Binding Opinion process is available online at [www.floridabuilding.org](http://www.floridabuilding.org).

## Code Development Committee Responsibilities

In each code development cycle, proposed changes to the code are considered at the Committee Action Hearings by the applicable International Code Development Committee as follows:

[RB] = IRC—Building Code Development Committee

[RE] = Residential Energy Code Development Committee

[RMP] = IRC—Mechanical/Plumbing Code Development Committee

The [RE] committee is also responsible for the IECC—Residential Provisions.

## Marginal Markings

Solid vertical lines in the margins within the body of the code indicate a technical change from the requirements of the 2012 edition. Deletion indicators in the form of an arrow (➡) are provided in the margin where an entire section, paragraph, exception or table has been deleted or an item in a list of items or a table has been deleted.

A single asterisk [\*] placed in the margin indicates that text or a table has been relocated within the code. A double asterisk [\*\*] placed in the margin indicates that the text or table immediately following it has been relocated there from elsewhere in the code.

Dotted vertical lines in the margins within the body of the code indicate a change from the requirements of the base codes to the *Florida Building Code, Residential*, 6th Edition (2017) effective December 31, 2017.

Sections deleted from the base code are designated “Reserved” in order to maintain the structure of the base code.

## Italicized Terms

Selected terms set forth in Chapter 2, Definitions, are italicized where they appear in code text. Such terms are not italicized where the definition set forth in Chapter 2 does not impart the intended meaning in the use of the term. The terms selected have definitions that the user should read carefully to better understand the code.

## Acknowledgments

The *Florida Building Code* is produced through the efforts and contributions of building designers, contractors, product manufacturers, regulators and other interested parties who participate in the Florida Building Commission’s consensus processes, Commission staff and the participants in the national model code development processes.

Currently in preview, click buy full version

# TABLE OF CONTENTS

<i>Part I—Administrative</i> .....	1	R306 Sanitation.....	52
<b>CHAPTER 1 SCOPE AND ADMINISTRATION</b> .....	<b>1</b>	R307 Toilet, Bath and Shower Spaces.....	52
<b>PART 1—SCOPE AND APPLICATION</b> .....	<b>1</b>	R308 Glazing.....	52
Section		R309 Garages and Carports.....	57
R101 General.....	1	R310 Emergency Escape and Rescue Openings.....	57
R102 Applicability (Reserved).....	1	R311 Means of Egress.....	58
<b>PART 2—ADMINISTRATION AND ENFORCEMENT</b> .....	<b>1</b>	R312 Guards and Window Fall Protection.....	62
Section		R313 Automatic Fire Sprinkler Systems (Reserved).....	62
R103 Department of Building Safety (Reserved).....	1	R314 Smoke Alarms.....	62
R104 Duties and Powers of the Building Official (Reserved).....	1	R315 Carbon Monoxide Alarms.....	63
R105 Permits (Reserved).....	1	R316 Foam Plastic.....	64
R106 Construction Documents (Reserved).....	1	R317 Protection of Wood and Wood-based Products against Decay.....	65
R107 Temporary Structures and Uses (Reserved).....	1	R318 Protection against Termites.....	67
R108 Fees (Reserved).....	1	R319 Sign Address.....	69
R109 Inspections (Reserved).....	1	R320 Accessibility.....	69
R110 Certificate of Occupancy (Reserved).....	1	R321 Elevators and Platform Lifts.....	69
R111 Service Utilities (Reserved).....	1	R322 Flood-resistant Construction.....	70
R112 Board of Appeals (Reserved).....	2	R323 Storm Shelters.....	73
R113 Violations (Reserved).....	2	R324 Solar Energy Systems.....	73
R114 Stop Work Order (Reserved).....	2	R325 Mezzanines.....	74
<i>Part II—Definitions</i> .....	<b>3</b>	R326 Swimming Pools, Spas and Hot Tubs.....	74
<b>CHAPTER 2 DEFINITIONS</b> .....	<b>3</b>	R327 Airport Noise.....	74
Section		<b>CHAPTER 4 FOUNDATIONS</b> .....	<b>75</b>
R201 General.....	3	Section	
R202 Definition.....	3	R401 General.....	75
<i>Part III—Building Planning and Construction</i> .....	<b>21</b>	R402 Materials.....	78
<b>CHAPTER 3 BUILDING PLANNING</b> .....	<b>21</b>	R403 Footings.....	78
Section		R404 Foundation and Retaining Walls.....	94
R301 Design Criteria.....	21	R405 Foundation Drainage.....	122
R302 Fire-resistant Construction.....	46	R406 Foundation Waterproofing and Dampproofing.....	123
R303 Light, Ventilation and Heating.....	51	R407 Columns.....	124
R304 Minimum Room Areas.....	52	R408 Under-floor Space.....	124
R305 Ceiling Height.....	52	<b>CHAPTER 5 FLOORS</b> .....	<b>127</b>
		Section	
		R501 General.....	127
		R502 Wood Floor Framing.....	127
		R503 Floor Sheathing.....	136

**TABLE OF CONTENTS**

R504 Pressure Preservative-treated Wood Floors (On Ground) . . . . . 137

R505 Cold-formed Steel Floor Framing . . . . . 138

R506 Concrete Floors (On Ground). . . . . 153

R507 Exterior Decks . . . . . 153

**CHAPTER 6 WALL CONSTRUCTION . . . . . 161**

Section

R601 General . . . . . 161

R602 Wood Wall Framing . . . . . 161

R603 Cold-formed Steel Wall Framing . . . . . 207

R604 Wood Structural Panels . . . . . 248

R605 Particleboard . . . . . 248

R606 General Masonry Construction . . . . . 248

R607 Glass Unit Masonry . . . . . 261

R608 Exterior Concrete Wall Construction . . . . . 262

R609 Exterior Windows and Doors . . . . . 332

R610 Structural Insulated Panel Wall Construction . . . . . 337

**CHAPTER 7 WALL COVERING . . . . . 349**

Section

R701 General . . . . . 349

R702 Interior Covering . . . . . 349

R703 Exterior Covering . . . . . 353

**CHAPTER 8 ROOF-CEILING CONSTRUCTION . . . . . 373**

Section

R801 General . . . . . 373

R802 Wood Roof Framing . . . . . 373

R803 Roof Sheathing . . . . . 401

R804 Cold-formed Steel Roof Framing . . . . . 402

R805 Ceiling Finishes . . . . . 416

R806 Roof Ventilation . . . . . 418

R807 Attic Access . . . . . 419

**CHAPTER 9 ROOF ASSEMBLIES . . . . . 421**

Section

R901 General . . . . . 421

R902 Fire Classification . . . . . 421

R903 Weather Protection . . . . . 421

R904 Materials . . . . . 422

R905 Requirements for Roof Coverings . . . . . 422

R906 Roof Insulation . . . . . 431

R907 Rooftop-mounted Photovoltaic Systems . . . . . 431

R908 Existing Roofing . . . . . 431

R909 Rooftop-mounted Photovoltaic Panel Systems . . . . . 435

**CHAPTER 10 CHIMNEYS AND FIREPLACES . . . 437**

Section

R1001 Masonry Fireplaces . . . . . 437

R1002 Masonry Heaters . . . . . 441

R1003 Masonry Chimneys . . . . . 441

R1004 Factory-built Fireplaces . . . . . 445

R1005 Factory-built Chimneys . . . . . 446

R1006 Exterior Air Supply . . . . . 446

**Part IV—Energy Conservation . . . . . 447**

**CHAPTER 11 [RE] ENERGY EFFICIENCY . . . . . 447**

Section

N1101 General . . . . . 447

**Part V—Mechanical . . . . . 449**

**CHAPTER 12 MECHANICAL ADMINISTRATION . . . . . 449**

Section

M1201 General . . . . . 449

M1202 Existing Mechanical Systems . . . . . 449

**CHAPTER 13 GENERAL MECHANICAL SYSTEM REQUIREMENTS . . . . . 451**

Section

M1301 General . . . . . 451

M1302 Approval . . . . . 451

M1303 Labeling of Appliances . . . . . 451

M1304 Type of Fuel . . . . . 451

M1305 Appliance Access . . . . . 451

M1306 Clearances from Combustible Construction . . . . . 452

M1307 Appliance Installation . . . . . 453

M1308 Mechanical Systems Installation . . . . . 456

**CHAPTER 14 HEATING AND COOLING EQUIPMENT AND APPLIANCES . . . . . 457**

Section

M1401 General . . . . . 457

M1402 Central Furnaces . . . . . 457

M1403 Heat Pump Equipment . . . . . 457

M1404 Refrigeration Cooling Equipment . . . . . 457

M1405 Baseboard Convectors ..... 457

M1406 Radiant Heating Systems ..... 457

M1407 Duct Heaters ..... 458

M1408 Vented Floor Furnaces ..... 458

M1409 Vented Wall Furnaces ..... 459

M1410 Vented Room Heaters ..... 459

M1411 Heating and Cooling Equipment ..... 459

M1412 Absorption Cooling Equipment ..... 460

M1413 Evaporative Cooling Equipment ..... 460

M1414 Fireplace Stoves ..... 461

M1415 Masonry Heaters ..... 461

**CHAPTER 15 EXHAUST SYSTEMS ..... 463**

Section

M1501 General ..... 463

M1502 Clothes Dryer Exhaust ..... 463

M1503 Range Hoods ..... 464

M1504 Installation of Microwave Ovens ..... 465

M1505 Overhead Exhaust Hoods ..... 465

M1506 Exhaust Ducts and Exhaust Openings ..... 465

M1507 Mechanical Ventilation ..... 465

**CHAPTER 16 DUCT SYSTEMS ..... 467**

Section

M1601 Duct Construction ..... 467

M1602 Return Air ..... 470

**CHAPTER 17 COMBUSTION AIR ..... 471**

Section

M1701 General ..... 471

**CHAPTER 18 CHIMNEYS AND VENTS ..... 473**

Section

M1801 General ..... 473

M1802 Vent Components ..... 473

M1803 Chimney and Vent Connectors ..... 474

M1804 Vents ..... 475

M1805 Masonry and Factory-built Chimneys ..... 475

**CHAPTER 19 SPECIAL APPLIANCES,  
EQUIPMENT AND SYSTEMS ..... 477**

Section

M1901 Ranges and Ovens ..... 477

M1902 Sauna Heaters ..... 477

M1903 Stationary Fuel Cell Power Plants ..... 477

M1904 Gaseous Hydrogen Systems ..... 477

**CHAPTER 20 BOILERS AND  
WATER HEATERS ..... 479**

Section

M2001 Boilers ..... 479

M2002 Operating and Safety Controls ..... 479

M2003 Expansion Tanks ..... 479

M2004 Water Heaters Used for Space Heating ..... 480

M2005 Water Heaters ..... 480

M2006 Pool Heaters ..... 480

**CHAPTER 21 HYDRONIC PIPING ..... 481**

Section

M2101 Hydronic Piping Systems Installation ..... 481

M2102 Baseboard Convectors ..... 481

M2103 Floor Heating Systems ..... 481

M2104 Low Temperature Piping ..... 483

M2105 Ground-Source Heat-Pump System  
Loop Piping ..... 483

**CHAPTER 22 SPECIAL PIPING AND  
STORAGE SYSTEMS ..... 487**

Section

M2201 Oil Tanks ..... 487

M2202 Oil Piping, Fitting and Connections ..... 487

M2203 Installation ..... 487

M2204 Oil Pumps and Valves ..... 488

**CHAPTER 23 SOLAR THERMAL  
ENERGY SYSTEMS ..... 489**

Section

M2301 Thermal Solar Energy Systems ..... 489

**Part VI—Fuel Gas ..... 491**

**CHAPTER 24 FUEL GAS ..... 491**

Section

G2401 General ..... 491

G2402 General ..... 491

G2403 General Definitions ..... 491

G2404 General ..... 497

G2405 Structural Safety ..... 498

G2406 Appliance Location ..... 498

G2407 Combustion, Ventilation and Dilution Air ..... 499

G2408 Installation ..... 503

G2409 Clearance Reduction ..... 503

G2410 Electrical ..... 506

**TABLE OF CONTENTS**

G2411 Electrical Bonding . . . . . 507

G2412 General . . . . . 507

G2413 Pipe Sizing . . . . . 507

G2414 Piping Materials . . . . . 529

G2415 Piping System Installation . . . . . 531

G2416 Piping Bends and Changes in Direction. . . . . 533

G2417 Inspection, Testing and Purging. . . . . 534

G2418 Piping Support . . . . . 536

G2419 Drips and Sloped Piping. . . . . 536

G2420 Shutoff Valves . . . . . 537

G2421 Flow Controls . . . . . 537

G2422 Appliance Connections. . . . . 538

G2423 Compressed Natural Gas Motor  
Vehicle Fuel-dispensing Facilities . . . . . 539

G2424 Piping Support Intervals. . . . . 539

G2425 General . . . . . 539

G2426 Vents. . . . . 541

G2427 Venting of Appliances . . . . . 541

G2428 Sizing of Category I Appliance  
Venting Systems . . . . . 550

G2429 Direct-vent, Integral Vent, Mechanical Vent  
and Ventilation/Exhaust Hood Venting . . . . . 562

G2430 Factory-built Chimneys . . . . . 562

G2431 General . . . . . 562

G2432 Decorative Appliances for Installation  
in Fireplaces . . . . . 562

G2433 Log Lighters . . . . . 562

G2434 Vented Gas Fireplaces  
(Decorative Appliances). . . . . 562

G2435 Vented Gas Fireplace Heaters . . . . . 562

G2436 Vented Wall Furnaces . . . . . 562

G2437 Floor Furnaces . . . . . 563

G2438 Clothes Dryers . . . . . 563

G2439 Clothes Dryer Exhaust . . . . . 563

G2440 Sauna Heaters . . . . . 564

G2441 Pool and Spa Heaters . . . . . 565

G2442 Forced-air Warm-air Furnaces . . . . . 565

G2443 Conversion Burners . . . . . 566

G2444 Unit Heaters . . . . . 566

G2445 Unvented Room Heaters. . . . . 566

G2446 Vented Room Heaters. . . . . 567

G2447 Cooking Appliances . . . . . 567

G2448 Water Heaters . . . . . 567

G2449 Air-Conditioning Appliances . . . . . 567

G2450 Illuminating Appliances . . . . . 567

G2451 Infrared Radiant Heaters . . . . . 568

G2452 Boilers . . . . . 568

G2453 Chimney Damper Opening Area . . . . . 568

G2454 Outdoor Decorative Appliances. . . . . 568

**Part VII—Plumbing . . . . . 569**

**CHAPTER 25 PLUMBING  
ADMINISTRATION . . . . . 569**

Section

P2501 General. . . . . 569

P2502 Existing Plumbing Systems . . . . . 569

P2503 Inspection and Tests. . . . . 569

**CHAPTER 26 GENERAL PLUMBING  
REQUIREMENTS . . . . . 571**

Section

P2601 General. . . . . 571

P2602 Individual Water Supply and  
Sewage Disposal . . . . . 571

P2603 Structural and Piping Protection . . . . . 571

P2604 Trenching and Backfilling . . . . . 572

P2605 Support. . . . . 572

P2606 Penetrations . . . . . 573

P2607 Waterproofing of Openings . . . . . 573

P2608 Workmanship . . . . . 573

P2609 Materials Evaluation and Listing. . . . . 573

**CHAPTER 27 PLUMBING FIXTURES . . . . . 575**

Section

P2701 Fixtures, Faucets and Fixture Fittings . . . . . 575

P2702 Fixture Accessories . . . . . 575

P2703 Tail Pieces . . . . . 575

P2704 Access to Connections . . . . . 575

P2705 Installation . . . . . 575

P2706 Waste Receptors. . . . . 575

P2707 Directional Fittings . . . . . 577

P2708 Showers . . . . . 577

P2709 Shower Receptors . . . . . 577

P2710 Shower Walls . . . . . 578

P2711 Lavatories. . . . . 578

P2712 Water Closets . . . . . 578

P2713 Bathtubs . . . . . 579

P2714 Sinks . . . . . 579

P2715 Laundry Tubs . . . . . 579

P2716 Food-waste Disposer . . . . . 579

P2717	Dishwashing Machines . . . . .	579	P3007	Sumps and Ejectors . . . . .	623
P2718	Clothes Washing Machine . . . . .	579	P3008	Backwater Valves . . . . .	624
P2719	Floor Drains . . . . .	579	P3009	Subsurface Landscape Irrigation Systems . . . . .	624
P2720	Whirlpool Bathtubs . . . . .	579	P3010	Replacement of Underground Sewers by Pipe Bursting Methods . . . . .	626
P2721	Bidet Installations . . . . .	580			
P2722	Fixture Fitting . . . . .	580	<b>CHAPTER 31 VENTS . . . . .</b>	<b>627</b>	
P2723	Macerating Toilet Systems . . . . .	580	Section		
P2724	Speciality Temperature Control Devices and Valves . . . . .	580	P3101	Vent Systems . . . . .	627
P2725	Nonliquid Saturated Treatment Systems . . . . .	580	P3102	Vent Stacks and Stack Vents . . . . .	627
			P3103	Vent Terminals . . . . .	627
<b>CHAPTER 28 WATER HEATERS . . . . .</b>	<b>581</b>		P3104	Vent Connections and Grades . . . . .	627
Section			P3105	Fixture Vents . . . . .	628
P2801	General . . . . .	581	P3106	Individual Vent . . . . .	628
P2802	Solar Water Heating Systems . . . . .	581	P3107	Common Vent . . . . .	628
P2803	Water Heaters Used for Space Heating . . . . .	581	P3108	Wet Venting . . . . .	628
P2804	Relief Valves . . . . .	582	P3109	Waste Stack Vent . . . . .	629
			P3110	Circuit Venting . . . . .	629
<b>CHAPTER 29 WATER SUPPLY AND DISTRIBUTION . . . . .</b>	<b>583</b>		P3111	Combination Waste and Vent System . . . . .	629
Section			P3112	Island Fixture Venting . . . . .	630
P2901	General . . . . .	583	P3113	Vent Pipe Sizing . . . . .	630
P2902	Protection of Potable Water Supply . . . . .	583	P3114	Air Admittance Valves . . . . .	630
P2903	Water Supply System . . . . .	586			
P2904	Dwelling Unit Fire Sprinkler Systems . . . . .	590	<b>CHAPTER 32 TRAPS . . . . .</b>	<b>633</b>	
P2905	Heated Water Distribution Systems . . . . .	602	Section		
P2906	Materials, Joints and Connections . . . . .	602	P3201	Fixture Traps . . . . .	633
P2907	Changes in Direction . . . . .	606			
P2908	Support . . . . .	606	<b>CHAPTER 33 STORM DRAINAGE . . . . .</b>	<b>635</b>	
P2909	Drinking Water Treatment Units . . . . .	606	Section		
P2910	Nonpotable Water Systems . . . . .	606	P3301	General . . . . .	635
P2911	On-site Nonpotable Water Reuse Systems . . . . .	609	P3302	Subsoil Drains . . . . .	635
P2912	Nonpotable Rainwater Collection and Distribution Systems . . . . .	611	P3303	Sumps and Pumping Systems . . . . .	635
P2913	Reclaimed Water Systems . . . . .	613			
			<b>Part VIII—Electrical . . . . .</b>	<b>637</b>	
<b>CHAPTER 30 SANITARY DRAINAGE . . . . .</b>	<b>615</b>		<b>CHAPTER 34 GENERAL REQUIREMENTS . . . . .</b>	<b>637</b>	
Section			Section		
P3001	General . . . . .	615	E3401	General . . . . .	637
P3002	Materials . . . . .	615	E3402	Building Structure Protection . . . . .	638
P3003	Joints and Connections . . . . .	617	E3403	Inspection and Approval . . . . .	638
P3004	Determining Drainage Fixture Units . . . . .	619	E3404	General Equipment Requirements . . . . .	638
P3005	Drainage System . . . . .	619	E3405	Equipment Location and Clearances . . . . .	640
P3006	Sizing of Drain Pipe Offsets . . . . .	623	E3406	Electrical Conductors and Connections . . . . .	640
			E3407	Conductor and Terminal Identification . . . . .	643

**TABLE OF CONTENTS**

**CHAPTER 35 ELECTRICAL DEFINITIONS . . . . . 645**

Section  
E3501 General . . . . . 645

**CHAPTER 36 SERVICES . . . . . 651**

Section  
E3601 General Services . . . . . 651  
E3602 Service Size and Rating . . . . . 651  
E3603 Service, Feeder and Grounding  
Electrode Conductor Sizing . . . . . 652  
E3604 Overhead Service and Service-entrance  
Conductor Installation . . . . . 653  
E3605 Service-entrance Conductors . . . . . 655  
E3606 Service Equipment—General . . . . . 655  
E3607 System Grounding . . . . . 656  
E3608 Grounding Electrode System . . . . . 656  
E3609 Bonding . . . . . 658  
E3610 Grounding Electrode Conductors . . . . . 659  
E3611 Grounding Electrode Conductor  
Connection to the Grounding Electrodes . . . . . 659

**CHAPTER 37 BRANCH CIRCUIT AND FEEDER REQUIREMENTS . . . . . 661**

Section  
E3701 General . . . . . 661  
E3702 Branch Circuit Ratings . . . . . 661  
E3703 Required Branch Circuits . . . . . 662  
E3704 Feeder Requirements . . . . . 663  
E3705 Conductor Sizing and Overcurrent  
Protection . . . . . 664  
E3706 Panelboards . . . . . 667

**CHAPTER 38 WIRING METHODS . . . . . 669**

Section  
E3801 General Requirements . . . . . 669  
E3802 Above-ground Installation Requirements . . . . . 669  
E3803 Underground Installation Requirements . . . . . 671

**CHAPTER 39 POWER AND LIGHTING DISTRIBUTION . . . . . 675**

Section  
E3901 Receptacle Outlets . . . . . 675  
E3902 Ground-fault and Arc-fault  
Circuit-interrupter Protection . . . . . 677  
E3903 Lighting Outlets . . . . . 679  
E3904 General Installation Requirements . . . . . 679  
E3905 Boxes, Conduit Bodies and Fittings . . . . . 691

E3906 Installation of Boxes, Conduit  
Bodies and Fittings . . . . . 694  
E3907 Cabinets and Panelboards . . . . . 696  
E3908 Grounding . . . . . 697  
E3909 Flexible Cords . . . . . 701

**CHAPTER 40 DEVICES AND LUMINAIRES . . . . . 703**

Section  
E4001 Switches . . . . . 703  
E4002 Receptacles . . . . . 704  
E4003 Luminaires . . . . . 705  
E4004 Luminaire Installation . . . . . 707  
E4005 Track Lighting . . . . . 708

**CHAPTER 41 APPLIANCE INSTALLATION . . . . . 709**

Section  
E4101 General . . . . . 709

**CHAPTER 42 SWIMMING POOLS [ELECTRICAL PROVISIONS] . . . . . 713**

Section  
E4201 General . . . . . 713  
E4202 Wiring Methods for Pools, Spas, Hot Tubs and  
Hydromassage Bathtubs . . . . . 713  
E4203 Equipment Location and Clearances . . . . . 715  
E4204 Bonding . . . . . 717  
E4205 Grounding . . . . . 719  
E4206 Equipment Installation . . . . . 720  
E4207 Storable Swimming Pools,  
Storable Spas, and Storable Hot Tubs . . . . . 722  
E4208 Spas and Hot Tubs . . . . . 723  
E4209 Hydromassage Bathtubs . . . . . 723

**CHAPTER 43 CLASS 2 REMOTE-CONTROL, SIGNALING AND POWER-LIMITED CIRCUITS . . . . . 725**

Section  
E4301 General . . . . . 725  
E4302 Power Sources . . . . . 725  
E4303 Wiring Methods . . . . . 725  
E4304 Installation Requirements . . . . . 726

**CHAPTER 44 HIGH-VELOCITY HURRICANE ZONES . . . . . 727**

Section  
4401 High-Velocity Hurricane Zones—Exterior Wall  
Covering . . . . . 727

4402 High-Velocity Hurricane Zones—Roof Assemblies and Rooftop Structures . . . . . 727

4403 High-Velocity Hurricane Zones—General. . . . . 727

4404 High-Velocity Hurricane Zones—Foundations and Retaining Walls . . . . . 727

4405 High-Velocity Hurricane Zones—Concrete. . . . . 727

4406 High-Velocity Hurricane Zones—Light Metal Alloys . . . . . 727

4407 High-Velocity Hurricane Zones—Masonry. . . . . 727

4408 High-Velocity Hurricane Zones—Steel . . . . . 727

4409 High-Velocity Hurricane Zones—Wood . . . . . 727

4410 High-Velocity Hurricane Zones—Glass and Glazing . . . . . 727

4411 High-Velocity Hurricane Zones—Gypsum Board and Plaster . . . . . 727

4412 High-Velocity Hurricane Zones—Plastics. . . . . 727

**CHAPTER 45 PRIVATE SWIMMING POOLS. . . . . 729**

Section

E4501 General . . . . . 729

*Part IX—Referenced Standards . . . . . 737*

**CHAPTER 46 REFERENCED STANDARDS . . . . . 737**

**APPENDIX A SIZING AND CAPACITIES OF GAS PIPING. . . . . 767**

**APPENDIX B SIZING OF VENTING SYSTEMS SERVING APPLIANCES EQUIPPED WITH DRAFT HOODS, CATEGORY I APPLIANCES, AND APPLIANCES LISTED FOR USE WITH TYPE B VENTS . . . . . 779**

**APPENDIX C EXIT TERMINALS OF MECHANICAL DRAFT AND DIRECT-VENT VENTING SYSTEMS . . . . . 789**

**APPENDIX D RECOMMENDED PROCEDURE FOR SAFETY INSPECTION OF AN EXISTING APPLIANCE INSTALLATION . . . . . 791**

**APPENDIX E FLORIDA STANDARD FOR MITIGATION OF RADON IN EXISTING BUILDINGS . . . . . 797**

**APPENDIX F FLORIDA STANDARD FOR PASSIVE RADON-RESISTANT NEW RESIDENTIAL BUILDING CONSTRUCTION . . . . . 805**

**APPENDIX G PIPING STANDARDS FOR VARIOUS APPLICATIONS. . . . . 811**

**APPENDIX H PATIO COVERS . . . . . 815**

Section

AH101 General. . . . . 815

AH102 Definition. . . . . 815

AH103 Exterior Walls and Openings. . . . . 815

AH104 Height. . . . . 815

AH105 Structural Provisions . . . . . 815

AH106 Special Provisions for Aluminum Screen Enclosures in Hurricane-prone Regions . . . . . 815

**APPENDIX I PRIVATE SEWAGE DISPOSAL. . . . . 819**

Section

AI101 General. . . . . 819

**APPENDIX J EXISTING BUILDINGS AND STRUCTURES . . . . . 821**

Section

AJ101 Purpose and Intent . . . . . 821

AJ102 Compliance . . . . . 821

AJ103 Preliminary Meeting . . . . . 822

AJ104 Evaluation of an Existing Building . . . . . 822

AJ105 Permit. . . . . 822

AJ201 Definitions . . . . . 822

AJ301 Repairs . . . . . 823

AJ401 Renovations . . . . . 823

AJ501 Alterations . . . . . 823

AJ601 Reconstruction . . . . . 824

**APPENDIX K SOUND TRANSMISSION. . . . . 827**

Section

AK101 General. . . . . 827

AK102 Air-borne Sound. . . . . 827

**TABLE OF CONTENTS**

AK103 Structural-borne Sound . . . . . 827  
 AK104 Referenced Standards . . . . . 827

**APPENDIX L PERMIT FEES . . . . . 829**

**APPENDIX M HOME DAY CARE—R-3 OCCUPANCY . . . . . 831**

Section  
 AM101 General . . . . . 831  
 AM102 Definition . . . . . 831  
 AM103 Means of Egress . . . . . 831  
 AM104 Smoke Detection . . . . . 832

**APPENDIX N VENTING METHODS . . . . . 833**

**APPENDIX O AUTOMATIC VEHICULAR GATES . . . . . 839**

Section  
 AO101 General . . . . . 839  
 AO102 Definition . . . . . 839  
 AO103 Automatic Vehicular Gates . . . . . 839

**APPENDIX P SIZING OF WATER PIPING SYSTEM . . . . . 841**

Section  
 AP101 General . . . . . 841  
 AP102 Information Required . . . . . 841  
 AP103 Selection of Pipe Size . . . . . 841  
 AP201 Selection of Pipe Size . . . . . 858

**APPENDIX Q RESERVED . . . . . 861**

**APPENDIX R LIGHT STRAW-CLAY CONSTRUCTION . . . . . 863**

Section  
 AR101 General . . . . . 863  
 AR102 Definitions . . . . . 863  
 AR103 Nonbearing Light Straw-Clay Construction . . . . . 863

AR104 Thermal Insulation . . . . . 864  
 AR105 Referenced Standard . . . . . 864

**APPENDIX S STRAWBALE CONSTRUCTION . . . . . 865**

Section  
 AS101 General . . . . . 865  
 AS102 Definitions . . . . . 865  
 AS103 Bales . . . . . 865  
 AS104 Finishes . . . . . 866  
 AS105 Strawbale Walls—General . . . . . 867  
 AS106 Strawbale Walls—Structural . . . . . 869  
 AS107 Fire Resistance . . . . . 872  
 AS108 Thermal Insulation . . . . . 873  
 AS109 Referenced Standards . . . . . 873

**APPENDIX T RECOMMENDED PROCEDURE FOR WORST-CASE TESTING OF ATMOSPHERIC VENTING SYSTEMS UNDER N1102.4 OR N1105 CONDITIONS  $\leq 5ACH_{50}$  . . . . . 875**

Section  
 T101 Scope . . . . . 875  
 T202 General Definitions . . . . . 875  
 T301 Testing Procedure . . . . . 875

**APPENDIX U SOLAR-READY PROVISIONS—DETACHED ONE- AND TWO-FAMILY DWELLINGS, MULTIPLE SINGLE-FAMILY DWELLINGS (TOWNHOUSES) . . . . . 877**

Section  
 U101 Scope . . . . . 877  
 U102 General Definition . . . . . 877  
 U103 Solar-ready Zone . . . . . 877

**INDEX . . . . . 879**