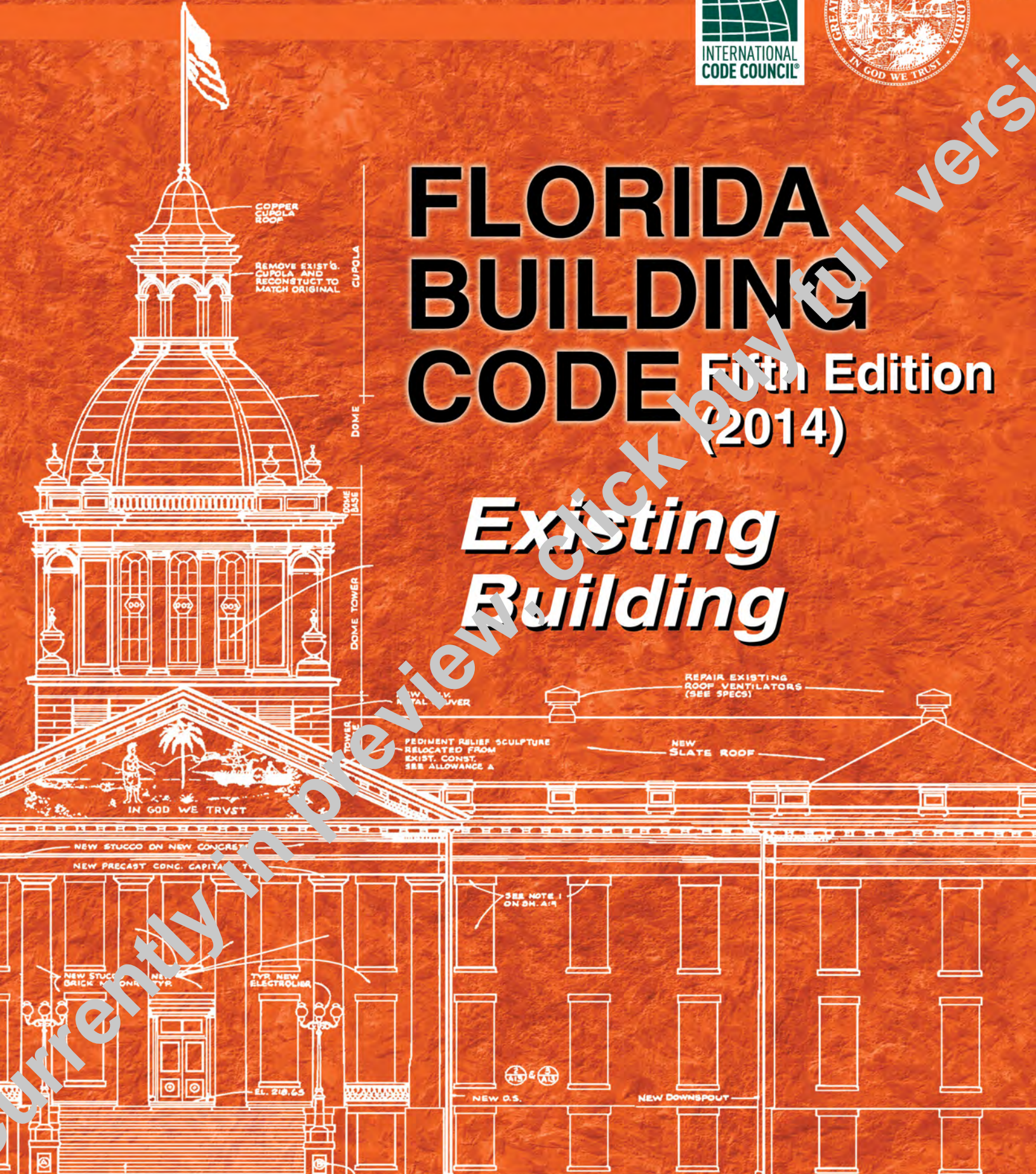


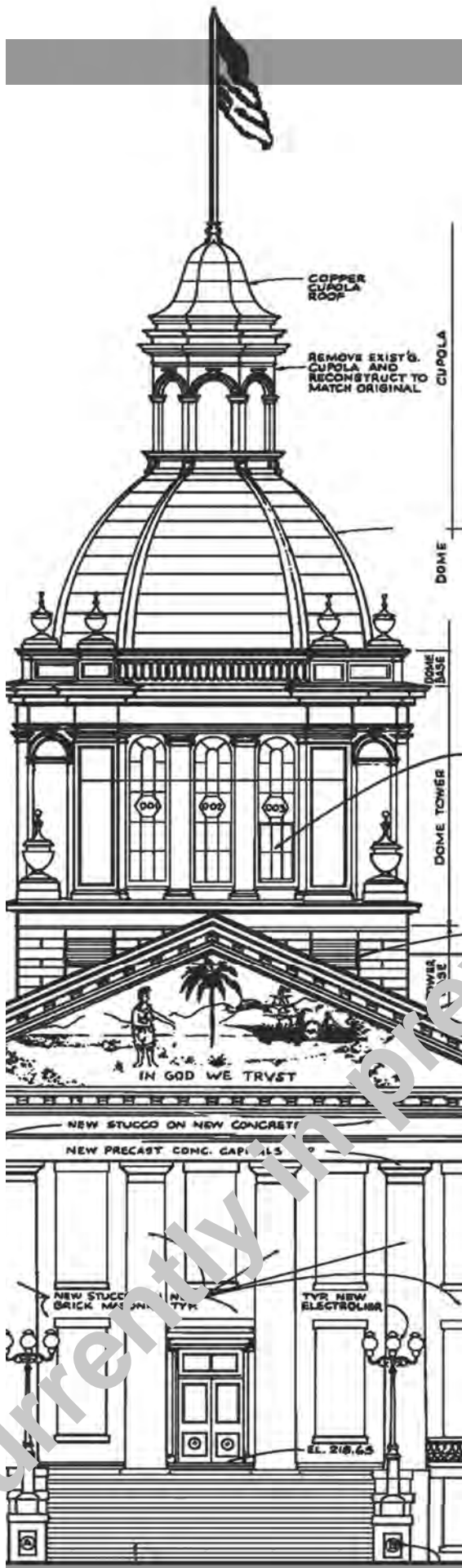


# FLORIDA BUILDING CODE

Fifth Edition  
(2014)

## Existing Building

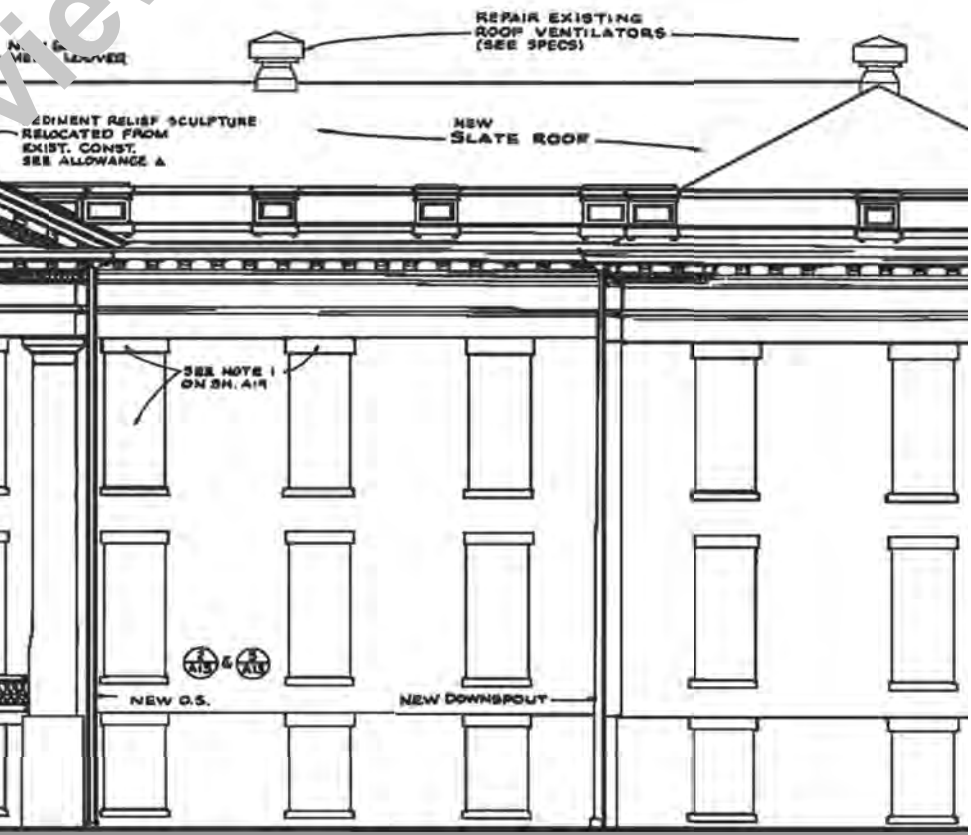




# FLORIDA BUILDING CODE

Fifth Edition  
(2014)

## *Existing Building*



# PREFACE

## History

The State of Florida first mandated statewide building codes during the 1970s at the beginning of the modern construction boom. The first law required all municipalities and counties to adopt and enforce one of the four state-recognized model codes known as the “state minimum building codes.” During the early 1990s a series of natural disasters, together with the increasing complexity of building construction regulation in vastly changed markets, led to a comprehensive review of the state building code system. The study revealed that building code adoption and enforcement was inconsistent throughout the state and those local codes thought to be the strongest proved inadequate when tested by major hurricane events. The consequences of the building code system failure were devastation to lives and economies and a statewide property insurance crisis. The response was a reform of the state building construction regulatory system that placed emphasis on uniformity and accountability.

The 1998 Florida Legislature amended Chapter 553, *Florida Statutes* (F.S.), Building Construction Standards, to create a single state building code that is enforced by local governments. As of March 1, 2002, the *Florida Building Code*, which is developed and maintained by the Florida Building Commission, supersedes all local building codes. The *Florida Building Code* is updated every three years and may be amended annually to incorporate interpretations and clarifications.

## Scope

The *Florida Building Code* is based on national model building codes and national consensus standards which are amended where necessary for Florida’s specific needs. However, code requirements that address snow loads and earthquake protection are pervasive; they are left in place but should not be utilized or enforced because Florida has no snow load or earthquake threat. The code incorporates all building construction-related regulations for public and private buildings in the State of Florida other than those specifically exempted by Section 553.73, *Florida Statutes*. It has been harmonized with the *Florida Fire Prevention Code*, which is developed and maintained by the Department of Financial Services, Office of the State Fire Marshal, to establish unified and consistent standards.

The base codes for the fifth edition (2014) of the *Florida Building Code* include: the *International Building Code*®, 2012 edition; the *International Plumbing Code*®, 2012 edition; the *International Mechanical Code*®, 2012 edition; the *International Fuel Gas Code*®, 2012 edition; the *International Residential Code*®, 2012 edition; the *International Existing Building Code*®, 2012 edition; the *International Energy Conservation Code*® edition, 2012; the *National Electrical Code*, 2011 edition; substantial criteria from the American Society of Heating, Refrigerating and Air-conditioning Engineers’ (ASHRAE) Standard 90.1-2010. State and local codes adopted and incorporated into the code include the *Florida Building Code, Accessibility*, and special hurricane protection standards for the High-Velocity Hurricane Zone.

The code is composed of nine main volumes: the *Florida Building Code, Building*, which also includes state regulations for licensed facilities; the *Florida Building Code, Plumbing*; the *Florida Building Code, Mechanical*; the *Florida Building Code, Fuel Gas*; the *Florida Building Code, Existing Building*; the *Florida Building Code, Residential*; the *Florida Building Code, Energy Conservation*; the *Florida Building Code, Accessibility* and the *Florida Building Code, Test Protocols for High-Velocity Hurricane Zones*. Chapter 27 of the *Florida Building Code, Building*, adopts the *National Electrical Code*, NFPA 70, by reference.

Under certain strictly defined conditions, local governments may amend requirements to be more stringent than the code. All local amendments to the *Florida Building Code* must be adopted by local ordinance and reported to the Florida Building Commission then posted on [www.florida-building.org](http://www.florida-building.org) in Legislative format for a month before being enforced. Local amendments to the *Florida Building Code* and the *Florida Fire Prevention Code* may be obtained from the Florida Building Commission web site, or from the Florida Department of Business and Professional Regulation or the Florida Department of Financial Services, Office of the State Fire Marshal, respectively.

## Adoption and Maintenance

The *Florida Building Code* is adopted and updated with new editions triennially by the Florida Building Commission. It is amended annually to incorporate interpretations, clarifications and to update standards. Minimum requirements for permitting, plans review and inspections are established by the code, and local jurisdictions may adopt additional administrative requirements that are more stringent. Local technical amendments are subject to strict criteria established by Section 553.73, F.S. They are subject to Commission review and adoption into the code or repeal when the code is updated triennially and are subject to appeal to the Commission according to the procedures established by Section 553.73, F.S.

Eleven Technical Advisory Committees (TACs), which are constituted consistent with American National Standards Institute (ANSI) Guidelines, review proposed code changes and clarifications of the code and make recommendations to the Commission. These TACs, whose members are constituted consistent with American National Standards Institute (ANSI) Guidelines, include: Accessibility; Joint Building Fire (a joint committee of the Commission and the State Fire Marshall); Building Structural; Code Administration/ Enforcement; Electrical; Energy; Mechanical, Plumbing and Fuel Gas; Roofing; Swimming Pool; and Special Occupancy (state agency construction and facility licensing regulations).

The Commission may only issue official code clarifications using procedure of Chapter 120, *Florida Statutes*. To obtain such a clarification, a request for a Declaratory Statement (DEC) must be made to the Florida Building Commission in a manner that establishes a clear set of facts and circumstances and identifies the section of the code in question. Requests are analyzed by staff, reviewed by the appropriate Technical Advisory Committee, and sent to the Florida Building Commission for action. These interpretations establish precedents for situations having similar facts and circumstances and are typically incorporated into the code in the next code amendment cycle. Non-binding opinions are available from the Building Officials Association of Florida's web site ([www.BOAF.net](http://www.BOAF.net)) and a Binding Opinion process is available online at [www.floridabuilding.org](http://www.floridabuilding.org).

## Code Development Committee Responsibilities (Letter Designations in Front of Section Numbers)

In each code development cycle, proposed changes to this code are considered at the Code Development Hearings by the International Existing Building Code Development Committee. Proposed changes to a code section having a number beginning with a letter in brackets are considered by a different code development committee. For example, proposed changes to code sections that are preceded by the letter [F] (e.g., [F] 1404.2), are considered by the International Fire Code Development Committee at the Code Development Hearings.

The content of sections in this code that begin with a letter designation is maintained by another code development committee in accordance with the following:

- [A] = Administrative Code Development Committee;
- [B] = International Building Code Development Committee (IBC—Fire Safety, General, Means of Egress or Structural);
- [F] = International Fire Code Development Committee;
- [P] = International Plumbing Code Development Committee;
- [FG] = International Fuel Gas Code Development Committee;
- [EC] = International Energy Conservation Code Development Committee; and
- [M] = International Mechanical Code Development Committee.

## Marginal Markings

Solid vertical lines in the margins within the body of the code indicate a technical change from the requirements of the 2009 edition. Deletion indicators in the form of an arrow (➡) are provided in the margin where an entire section, paragraph, exception or table has been deleted or an item in a list of items or a table has been deleted.

A single asterisk [\*] placed in the margin indicates that text or a table has been relocated within the code. A double asterisk [\*\*] placed in the margin indicates that the text or table immediately following it has been relocated there from elsewhere in the code.

Dotted vertical lines in the margins within the body of the code indicate a change from the requirements of the base codes to the *Florida Building Code, Existing Building*, 5th Edition (2014) effective June 30, 2015.

Sections deleted from the base code are designated “Reserved” in order to maintain the structure of the base code.

## Italicized Terms

Selected terms set forth in Chapter 2, Definitions, are italicized where they appear in code text. Such terms are not italicized where the definition set forth in Chapter 2 does not impart the intended meaning in the use of the term. The terms selected have definitions which the user should read carefully to facilitate better understanding of the code.

## Acknowledgments

The *Florida Building Code* is produced through the efforts and contributions of building designers, contractors, product manufacturers, regulators and other interested parties who participate in the Florida Building Commission’s consensus processes, Commission staff and the participants in the national model code development processes.

# TABLE OF CONTENTS

<p><b>CHAPTER 1 SCOPE AND ADMINISTRATION. . . . . 1.1</b></p> <p><b>PART 1—SCOPE AND APPLICATION. . . . . 1.1</b></p> <p>Section</p> <p>101 General . . . . . 1.1</p> <p>102 Applicability (Reserved) . . . . . 1.1</p> <p><b>PART 2—ADMINISTRATION AND ENFORCEMENT . . . . . 1.1</b></p> <p>103 Department of Building Safety (Reserved) . . . . . 1.1</p> <p>104 Duties and Powers of Code Official (Reserved) . . . . . 1.1</p> <p>105 Permits (Reserved) . . . . . 1.1</p> <p>106 Construction Documents (Reserved) . . . . . 1.1</p> <p>107 Temporary Structures and Uses (Reserved) . . . . . 1.1</p> <p>108 Fees (Reserved) . . . . . 1.1</p> <p>109 Inspections (Reserved) . . . . . 1.1</p> <p>110 Certificate of Occupancy (Reserved) . . . . . 1.2</p> <p>111 Service Utilities (Reserved) . . . . . 1.2</p> <p>112 Board of Appeals (Reserved) . . . . . 1.2</p> <p>113 Violations (Reserved) . . . . . 1.2</p> <p>114 Stop Work Order (Reserved) . . . . . 1.2</p> <p>115 Unsafe Buildings and Equipment (Reserved) . . . . . 1.2</p> <p>116 Emergency Measures (Reserved) . . . . . 1.2</p> <p>117 Demolition (Reserved) . . . . . 1.2</p> <p><b>CHAPTER 2 DEFINITIONS. . . . . 2.1</b></p> <p>Section</p> <p>201 General . . . . . 2.1</p> <p>202 General Definitions . . . . . 2.1</p> <p><b>CHAPTER 3 COMPLIANCE METHODS . . . . . 3.1</b></p> <p>Section</p> <p>301 Compliance Methods . . . . . 3.1</p> <p><b>CHAPTER 4 PRESCRIPTIVE COMPLIANCE METHOD. . . . . 4.1</b></p> <p>Section</p> <p>401 General . . . . . 4.1</p> <p>402 Additions . . . . . 4.1</p> <p>403 Alterations . . . . . 4.2</p> <p>404 Repairs . . . . . 4.3</p> <p>405 Fire Escapes . . . . . 4.4</p> <p>406 Glass Replacement . . . . . 4.4</p>	<p>407 Change of Occupancy . . . . . 4.4</p> <p>408 Historic Buildings . . . . . 4.5</p> <p>409 Moved Structures . . . . . 4.5</p> <p>410 Accessibility for Existing Buildings . . . . . 4.5</p> <p>411 Reroofing . . . . . 4.5</p> <p>412 Energy Conservation . . . . . 4.5</p> <p><b>CHAPTER 5 CLASSIFICATION OF WORK . . . . . 5.1</b></p> <p>Section</p> <p>501 General . . . . . 5.1</p> <p>502 Repairs . . . . . 5.1</p> <p>503 Alteration—Level 1 . . . . . 5.1</p> <p>504 Alteration—Level 2 . . . . . 5.1</p> <p>505 Alteration—Level 3 . . . . . 5.1</p> <p>506 Change of Occupancy . . . . . 5.1</p> <p>507 Accessibility . . . . . 5.1</p> <p>508 Historic Buildings . . . . . 5.1</p> <p>509 Relocated Buildings . . . . . 5.2</p> <p>510 Retrofitting . . . . . 5.2</p> <p><b>CHAPTER 6 REPAIRS. . . . . 6.1</b></p> <p>Section</p> <p>601 General . . . . . 6.1</p> <p>602 Building Elements and Materials . . . . . 6.1</p> <p>603 Fire Protection . . . . . 6.1</p> <p>604 Means of Egress . . . . . 6.1</p> <p>605 Accessibility . . . . . 6.1</p> <p>606 Structural . . . . . 6.1</p> <p>607 Electrical . . . . . 6.2</p> <p>608 Mechanical . . . . . 6.3</p> <p>609 Plumbing . . . . . 6.3</p> <p><b>CHAPTER 7 ALTERATIONS—LEVEL 1. . . . . 7.1</b></p> <p>Section</p> <p>701 General . . . . . 7.1</p> <p>702 Building Elements and Materials . . . . . 7.1</p> <p>703 Fire Protection . . . . . 7.1</p> <p>704 Means of Egress . . . . . 7.1</p> <p>705 Accessibility . . . . . 7.1</p> <p>706 Structural . . . . . 7.2</p> <p>707 Energy Conservation . . . . . 7.3</p> <p>708 Reroofing . . . . . 7.3</p>
--	---

**TABLE OF CONTENTS**

**CHAPTER 8 ALTERATIONS—LEVEL 2 . . . . . 8.1**

Section

801 General . . . . . 8.1

802 Special Use and Occupancy . . . . . 8.1

803 Building Elements and Materials . . . . . 8.1

804 Fire Protection . . . . . 8.3

805 Means of Egress . . . . . 8.5

806 Accessibility . . . . . 8.9

807 Structural . . . . . 8.9

808 Electrical . . . . . 8.9

809 Mechanical . . . . . 8.10

810 Plumbing . . . . . 8.10

811 Energy Conservation . . . . . 8.10

**CHAPTER 9 ALTERATIONS—LEVEL 3 . . . . . 9.1**

Section

901 General . . . . . 9.1

902 Special Use and Occupancy . . . . . 9.1

903 Building Elements and Materials . . . . . 9.1

904 Fire Protection . . . . . 9.2

905 Means of Egress . . . . . 9.2

906 Accessibility . . . . . 9.2

907 Structural . . . . . 9.2

908 Energy Conservation . . . . . 9.3

**CHAPTER 10 CHANGE OF OCCUPANCY . . . . . 10.1**

Section

1001 General . . . . . 10.1

1002 Special Use and Occupancy . . . . . 10.1

1003 Building Elements and Materials . . . . . 10.1

1004 Fire Protection . . . . . 10.1

1005 Means of Egress . . . . . 10.1

1006 Accessibility . . . . . 10.1

1007 Structural . . . . . 10.1

1008 Electrical . . . . . 10.2

1009 Mechanical . . . . . 10.3

1010 Plumbing . . . . . 10.3

1011 Other Requirements . . . . . 10.3

1012 Change of Occupancy Classification . . . . . 10.3

1013 Energy Conservation . . . . . 10.6

**CHAPTER 11 ADDITIONS . . . . . 11.1**

Section

1101 General . . . . . 11.1

1102 Heights and Areas . . . . . 11.1

1103 Structural . . . . . 11.1

1104 Smoke Alarms in Occupancy  
Groups R and I-1 . . . . . 11.2

1105 Accessibility . . . . . 11.2

1106 Energy Conservation . . . . . 11.2

**CHAPTER 12 HISTORIC BUILDINGS . . . . . 12.1**

Section

1201 General . . . . . 12.1

1202 Definitions . . . . . 12.1

1203 Standards and Guidelines for Rehabilitating  
Historic Buildings . . . . . 12.2

1204 Equivalency . . . . . 12.2

1205 Compliance . . . . . 12.2

1206 Investigation and Evaluation . . . . . 12.2

1207 Historic Cuban Tile . . . . . 12.3

**CHAPTER 13 RELOCATED OR MOVED  
BUILDINGS . . . . . 13.1**

Section

1301 General . . . . . 13.1

1302 Requirements . . . . . 13.1

**CHAPTER 14 PERFORMANCE COMPLIANCE  
METHODS . . . . . 14.1**

Section

1401 General . . . . . 14.1

**CHAPTER 15 CONSTRUCTION  
SAFEGUARDS . . . . . 15.1**

Section

1501 General . . . . . 15.1

1502 Protection of Adjoining Property . . . . . 15.2

1503 Temporary Use of Streets, Alleys and Public  
Property . . . . . 15.2

1504 Fire Extinguishers . . . . . 15.2

1505 Means of Egress . . . . . 15.3

1506 Standpipe Systems . . . . . 15.3

1507 Automatic Sprinkler System . . . . . 15.3  
 1508 Accessibility . . . . . 15.3  
 1509 Water Supply for Fire Protection . . . . . 15.3

**CHAPTER 16 REFERENCED STANDARDS . . . . 16.1**

**CHAPTER 17 RETROFITTING . . . . . 17.1**

Section  
 1701 General . . . . . 17.1  
 1702 Definitions . . . . . 17.1  
 1703 Materials . . . . . 17.2  
 1704 General Requirements and  
     Means of Retrofit . . . . . 17.3  
 1705 Added Studs . . . . . 17.5  
 1706 Retrofit Studs . . . . . 17.5  
 1707 Lateral Braces . . . . . 17.13  
 1708 Attachment of Lateral Braces to  
     Retrofit Studs . . . . . 17.18  
 1709 Connections to Wall Below . . . . . 17.20

**APPENDIX A GUIDELINES FOR THE SEISMIC  
 RETROFIT OF EXISTING  
 BUILDINGS. . . . . A1.1**

**CHAPTER A1 SEISMIC STRENGTHENING  
 PROVISIONS FOR UNREINFORCED  
 MASONRY BEARING WALL  
 BUILDINGS. . . . . A1.1**

Section  
 A101 Purpose . . . . . A1.1  
 A102 Scope . . . . . A1.1  
 A103 Definitions . . . . . A1.1  
 A104 Symbols and Notations . . . . . A1.1  
 A105 General Requirements . . . . . A1.2  
 A106 Materials Requirements . . . . . A1.3  
 A107 Quality Control . . . . . A1.5  
 A108 Design Strengths . . . . . A1.5  
 A109 Analysis and Design Procedure . . . . . A1.6  
 A110 General Procedure . . . . . A1.6  
 A111 Special Procedure . . . . . A1.6  
 A112 Analysis and Design . . . . . A1.8  
 A113 Detailed System Design Requirements . . . . . A1.9  
 A114 Walls of Unburned Clay,  
     Adobe or Stone Masonry . . . . . A1.10

**CHAPTER A2 EARTHQUAKE HAZARD  
 REDUCTION IN EXISTING  
 REINFORCED CONCRETE AND  
 REINFORCED MASONRY WALL  
 BUILDINGS WITH FLEXIBLE  
 DIAPHRAGMS. . . . . A2.1**

Section  
 A201 Purpose . . . . . A2.1  
 A202 Scope . . . . . A2.1  
 A203 Definitions . . . . . A2.1  
 A204 Symbols and Notations . . . . . A2.1  
 A205 General Requirements . . . . . A2.1  
 A206 Analysis and Design . . . . . A2.2  
 A207 Materials of Construction . . . . . A2.3

**CHAPTER A3 PRESCRIPTIVE PROVISIONS FOR  
 SEISMIC STRENGTHENING OF  
 CRIPPLE WALLS AND SILL PLATE  
 ANCHORAGE OF LIGHT, WOOD-  
 FRAME RESIDENTIAL  
 BUILDINGS . . . . . A3.1**

Section  
 A301 General . . . . . A3.1  
 A302 Definitions . . . . . A3.1  
 A303 Structural Weaknesses . . . . . A3.2  
 A304 Strengthening Requirements . . . . . A3.2

**CHAPTER A4 EARTHQUAKE RISK  
 REDUCTION IN WOOD-FRAME  
 RESIDENTIAL BUILDINGS  
 WITH SOFT, WEAK OR  
 OPEN FRONT WALLS. . . . . A4.1**

Section  
 A401 General . . . . . A4.1  
 A402 Definitions . . . . . A4.1  
 A403 Analysis and Design . . . . . A4.1  
 A404 Prescriptive Measures for Weak Story . . . . . A4.3  
 A405 Materials of Construction . . . . . A4.3  
 A406 Information Required to be on the Plans . . . . . A4.4  
 A407 Quality Control . . . . . A4.4

**CHAPTER A5 EARTHQUAKE HAZARD  
 REDUCTION IN EXISTING  
 CONCRETE BUILDINGS . . . . . A5.1**

Section  
 A501 Purpose . . . . . A5.1

**TABLE OF CONTENTS**

A502 Scope ..... A5.1  
A503 General Requirements ..... A5.1  
A504 Site Ground Motion ..... A5.1  
A505 Tier 1 Analysis Procedure ..... A5.1  
A506 Tier 2 Analysis Procedure ..... A5.2  
A507 Tier 3 Analysis Procedure ..... A5.3

**CHAPTER A6 REFERENCED STANDARDS .... A6.1**

**APPENDIX B STANDARD FOR REHABILITATION..... B.1**

**APPENDIX C ..... C1.1**

**CHAPTER C2 ROOF DECK FASTENING FOR HIGH-WIND AREAS (Reserved) ..... C2.1**

**RESOURCE A GUIDELINES ON FIRE RATINGS OF ARCHAIC MATERIALS AND ASSEMBLIES (Reserved)..... RESOURCE A.1**

**INDEX..... INDEX.1**