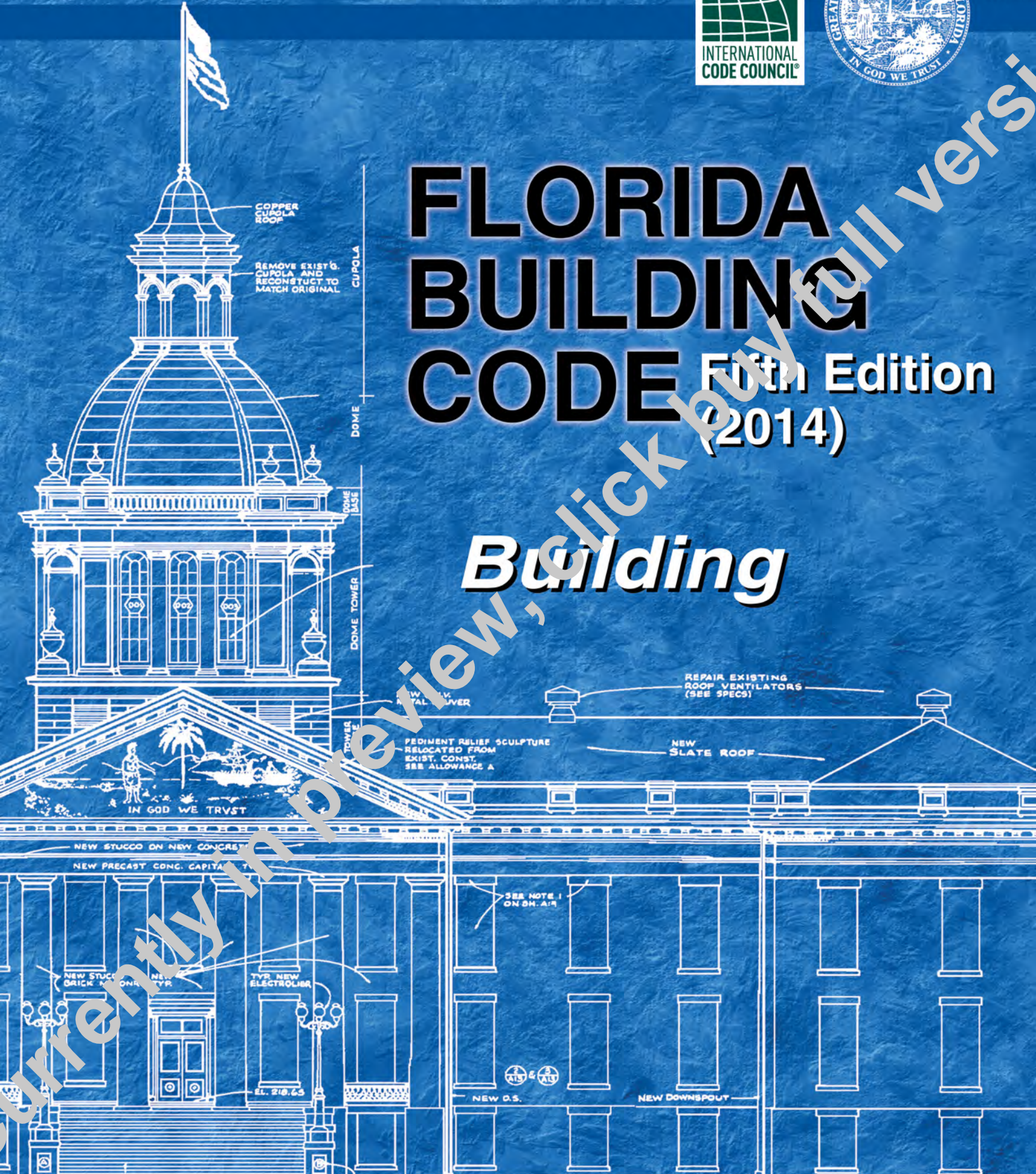




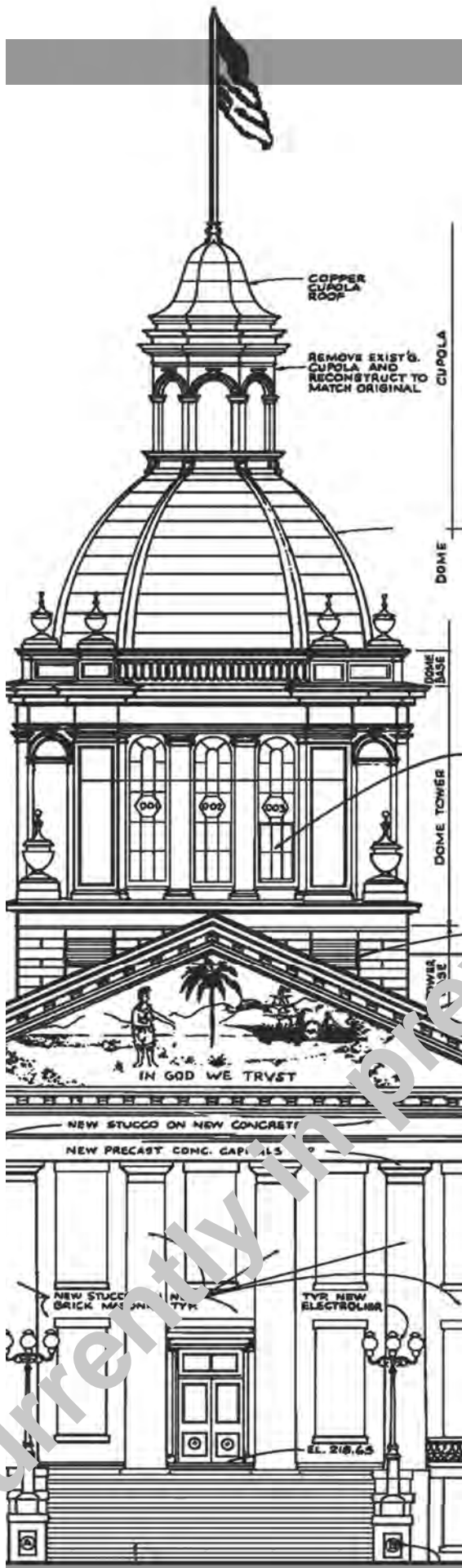
FLORIDA BUILDING CODE

Fifth Edition (2014)

Building



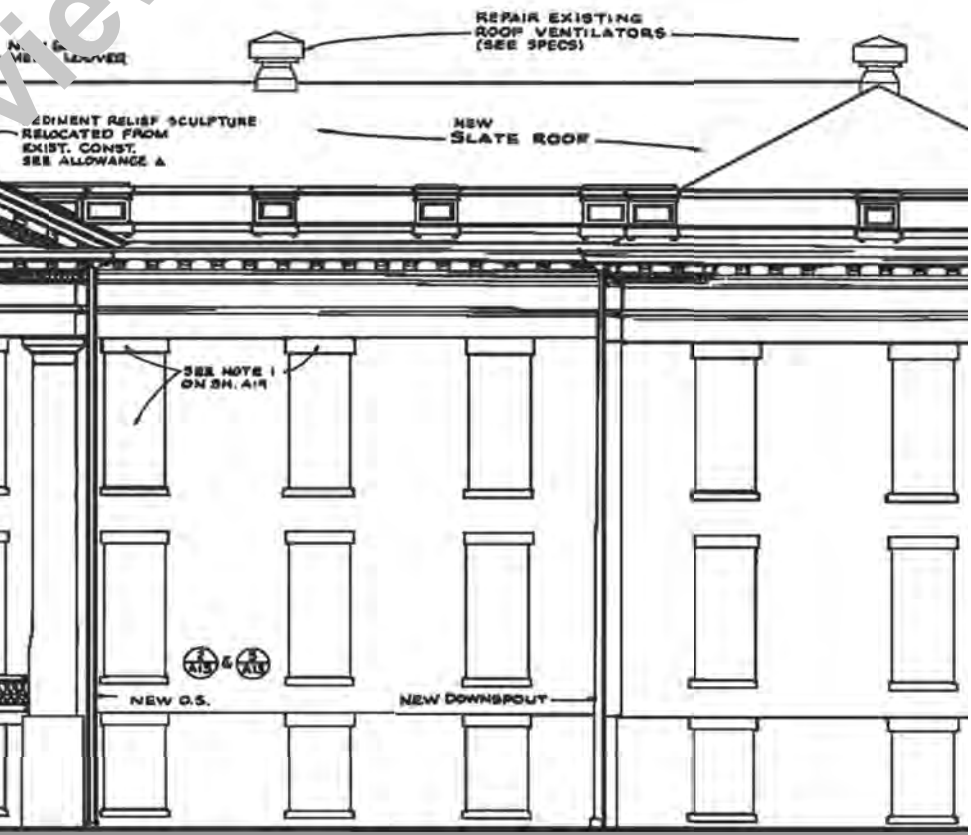
Currently in preview, click for full version



FLORIDA BUILDING CODE

Fifth Edition
(2014)

Building



Florida Building Code, Building, 5th Edition (2014)

First Printing: March 2015

ISBN: 978-1-60983-557-6

COPYRIGHT © 2015
by
INTERNATIONAL CODE COUNCIL, INC.

ALL RIGHTS RESERVED. This *Florida Building Code, Building, 5th Edition* (2014) contains substantial copyrighted material from the 2012 *International Building Code*®, 5th printing, which is a copyrighted work owned by the International Code Council, Inc. Without advance written permission from the copyright owner, no part of this book may be reproduced, distributed or transmitted in any form or by any means, including, without limitation, electronic, optical or mechanical means (by way of example, and not limitation, photocopying, or recording by or in an information storage retrieval system). For information on permission to copy material exceeding fair use, please contact: Publications, 4051 Flossmoor Road, Country Club Hills, IL 60478. Phone: 1-800-541-CC-SAFE (422-7233).

Trademarks: “International Code Council,” the “International Code Council” logo and the “Florida Building Code, Building” are trademarks of the International Code Council, Inc.

PRINTED IN THE U.S.A.

PREFACE

History

The State of Florida first mandated statewide building codes during the 1970s at the beginning of the modern construction boom. The first law required all municipalities and counties to adopt and enforce one of the four state-recognized model codes known as the “state minimum building codes.” During the early 1990s a series of natural disasters, together with the increasing complexity of building construction regulation in vastly changed markets, led to a comprehensive review of the state building code system. The study revealed that building code adoption and enforcement was inconsistent throughout the state and those local codes thought to be the strongest proved inadequate when tested by major hurricane events. The consequences of the building codes system failure were devastation to lives and economies and a statewide property insurance crisis. The response was a reform of the state building construction regulatory system that placed emphasis on uniformity and accountability.

The 1998 Florida Legislature amended Chapter 553, *Florida Statutes* (FS), Building Construction Standards, to create a single state building code that is enforced by local governments. As of March 1, 2002, the *Florida Building Code*, which is developed and maintained by the Florida Building Commission, supersedes all local building codes. The *Florida Building Code* is updated every three years and may be amended annually to incorporate interpretations and clarifications.

Scope

The *Florida Building Code* is based on national model building codes and national consensus standards which are amended where necessary for Florida’s specific needs. However, code requirements that address snow loads and earthquake protection are pervasive; they are left in place but should not be utilized or enforced because Florida has no snow load or earthquake threat. The code incorporates all building construction-related regulations for public and private buildings in the State of Florida other than those specifically exempted by Section 553.73, *Florida Statutes*. It has been harmonized with the *Florida Fire Prevention Code*, which is developed and maintained by the Department of Financial Services, Office of the State Fire Marshal, to establish unified and consistent standards.

The base codes for the Fifth edition (2014) of the *Florida Building Code* include: the *International Building Code*®, 2012 edition; the *International Plumbing Code*®, 2012 edition; the *International Mechanical Code*®, 2012 edition; the *International Fuel Gas Code*®, 2012 edition; the *International Residential Code*®, 2012 edition; the *International Existing Building Code*®, 2012 edition; the *International Energy Conservation Code*®, 2012 edition; the *National Electrical Code*, 2011 edition; substantial criteria from the American Society of Heating, Refrigerating and Air-conditioning Engineers’ (ASHRAE) Standard 90.1-2010. State and local codes adopted and incorporated into the code include the *Florida Building Code, Accessibility*, and special hurricane protection standards for the High-Velocity Hurricane Zone.

The code is composed of nine main volumes: the *Florida Building Code, Building*, which also includes state regulations for licensed facilities; the *Florida Building Code, Plumbing*; the *Florida Building Code, Mechanical*; the *Florida Building Code, Fuel Gas*; the *Florida Building Code, Existing Building*; the *Florida Building Code, Residential*; the *Florida Building Code, Energy Conservation*; the *Florida Building Code, Accessibility* and the *Florida Building Code, Test Protocols for High-Velocity Hurricane Zones*. Chapter 27 of the *Florida Building Code, Building*, adopts the *National Electrical Code*, NFPA 70, by reference.

Under certain strictly defined conditions, local governments may amend requirements to be more stringent than the code. All local amendments to the *Florida Building Code* must be adopted by local ordinance and reported to the Florida Building Commission, then posted on www.florida-building.org in Legislative format for a month before being enforced. Local amendments to the *Florida Building Code* and the *Florida Fire Prevention Code* may be obtained from the Florida Building Commission web site, or from the Florida Department of Business and Professional Regulation or the Florida Department of Financial Services, Office of the State Fire Marshal, respectively.

Adoption and Maintenance

The Florida Building Code is adopted and updated with new editions triennially by the Florida Building Commission. It is amended annually to incorporate interpretations, clarifications and to update standards. Minimum requirements for permitting, plans review and inspections are established by the code, and local jurisdictions may adopt additional administrative requirements that are more stringent. Local technical amendments are subject to strict criteria established by Section 553.73, FS. They are subject to Commission review and adoption into the code or repeal when the code is updated triennially and are subject to appeal to the Commission according to the procedures established by Section 553.73, FS.

Eleven Technical Advisory Committees (TACs), which are constituted consistent with American National Standards Institute (ANSI) Guidelines, review proposed code changes and clarifications of the code and make recommendations to the Commission. These TACs, whose membership is constituted consistent with American National Standards Institute (ANSI) Guidelines, include: Accessibility; Joint Building Fire (a joint committee of the Commission and the State Fire Marshal); Building Structural; Code Administration/Enforcement; Electrical; Energy; Mechanical, Plumbing and Fuel Gas; Roofing; Swimming Pool; and Special Occupancy (state agency construction and facility licensing regulations).

The Commission may only issue official code clarifications using procedures of Chapter 120, *Florida Statutes*. To obtain such a clarification, a request for a Declaratory Statement (DEC) must be made to the Florida Building Commission in a manner that establishes a clear set of facts and circumstances and identifies the section of the code in question. Requests are analyzed by staff, reviewed by the appropriate Technical Advisory Committee, and sent to the Florida Building Commission for action. These interpretations establish precedents for situations having similar facts and circumstances and are typically incorporated into the code at the next code amendment cycle. Non-binding opinions are available from the Building Officials Association of Florida's web site (www.BOAF.net) and a Binding Opinion process is available online at www.floridabuilding.org.

Code Development Committee Responsibilities (Letter Designations in Front of Section Numbers)

In each code development cycle, proposed changes to the code are considered at the Code Development Hearings by the applicable International Building Code Development Committee (IBC-Fire Safety, General, Means of Egress or Structural). Proposed changes to a code section that has a number beginning with a letter in brackets are considered by a different code development committee. For example, proposed changes to code sections that have [F] in front of them (e.g., [F] 903.1.1.1) are considered by the International Building Code, Fire Development Committee during the portion of the code development hearings when the International Building Code, Fire Development Committee meets.

The content of sections in this code that begin with a letter designation is maintained by another code development committee in accordance with the following:

- [A] = Administrative Code Development Committee;
- [E] = International Energy Conservation Code Development Committee (Commercial Energy Committee or Residential Energy Committee, as applicable);
- [EB] = International Existing Building Code Development Committee;
- [F] = Florida Building Code, Fire Development Committee;
- [FG] = Florida Building Code, Fuel Gas Development Committee;
- [M] = Florida Building Code, Mechanical Development Committee; and
- [P] = Florida Building Code, Plumbing Development Committee.

Marginal Markings

Solid vertical lines in the margins within the body of the code indicate a technical change from the requirements of the 2009 edition. Deletion indicators in the form of an arrow (→) are provided in the margin where an entire section, paragraph, exception or table has been deleted or an item in a list of items or table has been deleted.

A single asterisk [*] placed in the margin indicates that text or a table has been relocated within the code. A double asterisk [**] placed in the margin indicates that the text or table immediately following it has been relocated there from elsewhere in the code.

Dotted vertical lines in the margins within the body of the supplement indicate a change from the requirements of the base codes to the *Florida Building Code*, 5th Edition (2014), effective June 30, 2015.

Sections deleted from the base code or the High-Velocity Hurricane Zones (HVH₂) are designated “Reserved” in order to maintain the structure of the base code.

Italicized Terms

Selected terms set forth in Chapter 2, Definitions, are italicized where they appear in code text (except those in Sections 1903 through 1908 where italics indicate provisions that differ from ACI 318). Such terms are not italicized where the definition set forth in Chapter 2 does not impart the intended meaning in the use of the term. The terms selected have definitions which the user should read carefully to facilitate better understanding of the code.

Acknowledgments

The *Florida Building Code* is produced through the efforts and contributions of building designers, contractors, product manufacturers, regulators and other interested parties who participate in the Florida Building Commission’s consensus processes, Commission staff and the participants in the national model code development processes.

TABLE OF CONTENTS

<p>CHAPTER 1 SCOPE AND ADMINISTRATION..... 1.1</p> <p>PART 1—SCOPE AND APPLICATION..... 1.1</p> <p>Section</p> <p>101 General 1.1</p> <p>102 Applicability 1.1</p> <p>PART 2—ADMINISTRATION AND ENFORCEMENT..... 1.3</p> <p>103 Department of Building Safety (Reserved).... 1.3</p> <p>104 Duties and Powers of Building Official 1.3</p> <p>105 Permits 1.4</p> <p>106 Floor and Roof Design Loads 1.9</p> <p>107 Submittal Documents 1.9</p> <p>108 Temporary Structures and Uses 1.13</p> <p>109 Fees 1.14</p> <p>110 Inspections 1.14</p> <p>111 Certificate of Occupancy 1.17</p> <p>112 Service Utilities..... 1.18</p> <p>113 Board of Appeals (Reserved) 1.18</p> <p>114 Violations (Reserved) 1.18</p> <p>115 Stop Work Order..... 1.18</p> <p>116 Unsafe Structures and Equipment (Reserved)..... 1.18</p> <p>117 Variances in Flood Hazard Areas..... 1.18</p> <p>CHAPTER 2 DEFINITIONS..... 2.1</p> <p>Section</p> <p>201 General 2.1</p> <p>202 Definitions..... 2.1</p> <p>CHAPTER 3 USE AND OCCUPANCY CLASSIFICATION..... 3.1</p> <p>Section</p> <p>301 General 3.1</p> <p>302 Classification..... 3.1</p> <p>303 Assembly Group A 3.1</p> <p>304 Business Group B 3.2</p> <p>305 Educational Group E 3.2</p> <p>306 Factory Group F 3.2</p> <p>307 High-Hazard Group H..... 3.3</p>	<p>308 Institutional Group I 3.8</p> <p>309 Mercantile Group M..... 3.9</p> <p>310 Residential Group R 3.9</p> <p>311 Storage Group S 3.9</p> <p>312 Utility and Miscellaneous Group U 3.11</p> <p>CHAPTER 4 SPECIAL DETAILED REQUIREMENTS BASED ON USE AND OCCUPANCY 4.1</p> <p>Section</p> <p>401 Scope 4.1</p> <p>402 Covered Mall and Open Mall Buildings..... 4.1</p> <p>403 High-rise Buildings 4.5</p> <p>404 Atrium 4.8</p> <p>405 Underground Buildings 4.9</p> <p>406 Motor-vehicle-related Occupancies 4.10</p> <p>407 Group I-2 4.14</p> <p>408 Group I-3 4.16</p> <p>409 Motion Picture Projection Rooms 4.18</p> <p>410 Stages, Platforms and Technical Production Areas 4.19</p> <p>411 Special Amusement Buildings 4.20</p> <p>412 Aircraft-related Occupancies 4.21</p> <p>413 Combustible Storage..... 4.24</p> <p>414 Hazardous Materials..... 4.24</p> <p>415 Groups H-1, H-2, H-3, H-4 and H-5..... 4.28</p> <p>416 Application of Flammable Finishes 4.38</p> <p>417 Drying Rooms..... 4.38</p> <p>418 Organic Coatings 4.38</p> <p>419 Live/Work Units..... 4.38</p> <p>420 Groups I-1, R-1, R-2, R-3..... 4.39</p> <p>421 Hydrogen Cutoff Rooms 4.39</p> <p>422 Ambulatory Care Facilities..... 4.40</p> <p>423 Storm Shelters..... 4.40</p> <p>424 Children’s Play Structures 4.41</p> <p>425-448 Reserved 4.41</p> <p>449 Hospitals..... 4.41</p> <p>450 Nursing Homes..... 4.49</p> <p>451 Ambulatory Surgical Centers 4.65</p> <p>452 Birthing Centers 4.69</p> <p>453 State Requirements for Educational Facilities 4.70</p>
---	--

TABLE OF CONTENTS

454 Swimming Pools and Bathing Places (Public and Private) 4.89

455 Public Lodging Establishments 4.115

456 Public Food Service Establishments 4.116

457 Mental Health Programs 4.117

458 Manufactured Buildings 4.126

459 Boot Camps for Children 4.128

460 Mausoleums and Columbariums 4.128

461 Transient Public Lodging Establishments 4.130

462 Use of Asbestos in New Public Buildings or Buildings Newly Constructed for Lease to Government Entities—Prohibition 4.130

463 Adult Day Care 4.130

464 Assisted Living Facilities 4.131

465 Control of Radiation Hazards 4.134

466 Day-care Occupancies 4.139

467 Hospice Inpatient Facilities and Units and Hospice Residences 4.141

468 Schools, Colleges and Universities 4.144

469 Office Surgery Suite 4.145

CHAPTER 5 GENERAL BUILDING HEIGHTS AND AREAS 5.1

Section

501 General 5.1

502 Definitions 5.1

503 General Building Height and Area Limitations 5.1

504 Building Height 5.1

505 Mezzanines and Equipment Platforms 5.3

506 Building Area Modifications 5.4

507 Unlimited Area Buildings 5.5

508 Mixed Use and Occupancy 5.7

509 Incidental Uses 5.8

510 Special Provision 5.9

CHAPTER 6 TYPES OF CONSTRUCTION 6.1

Section

601 General 6.1

602 Construction Classification 6.1

603 Combustible Material in Type I and II Construction 6.3

CHAPTER 7 FIRE AND SMOKE PROTECTION FEATURES 7.1

Section

701 General 7.1

702 Definitions 7.1

703 Fire-resistance Ratings and Fire Tests 7.1

704 Fire-resistance Rating of Structural Members 7.2

705 Exterior Walls 7.4

706 Fire Walls 7.8

707 Fire Barriers 7.11

708 Fire Partitions 7.11

709 Smoke Barriers 7.13

710 Smoke Partitions 7.14

711 Horizontal Assemblies 7.14

712 Vertical Openings 7.15

713 Shaft Enclosures 7.16

714 Penetrations 7.18

715 Fire-resistant Joint Systems 7.21

716 Opening Protection 7.22

717 Ducts and Air Handler Openings 7.28

718 Concealed Spaces 7.32

719 Fire-resistance Requirements for Plaster 7.34

720 Thermal and Sound-insulating Materials 7.35

721 Prescriptive Fire Resistance 7.35

722 Calculated Fire Resistance 7.58

CHAPTER 8 INTERIOR FINISHES 8.1

Section

801 General 8.1

802 Definitions 8.1

803 Wall and Ceiling Finishes 8.1

804 Interior Floor Finish 8.4

805 Combustible Materials in Types I and II Construction 8.4

806 Decorative Materials and Trim 8.4

807 Insulation 8.5

808 Acoustical Ceiling Systems 8.5

CHAPTER 9 FIRE PROTECTION SYSTEMS 9.1

Section

901 General 9.1

902 Definitions 9.1

903 Automatic Sprinkler Systems 9.2

904 Alternative Automatic Fire-extinguishing Systems 9.8

905 Standpipe Systems 9.10

906 Portable Fire Extinguishers 9.12

907 Fire Alarm and Detection Systems 9.13

908 Emergency Alarm Systems 9.23
 909 Smoke Control Systems 9.24
 910 Smoke and Heat Removal 9.32
 911 Fire Command Center 9.34
 912 Fire Department Connections 9.35
 913 Fire Pumps 9.35
 914 Emergency Responder Safety Features 9.36
 915 Emergency Responder Radio Coverage 9.36

CHAPTER 10 MEANS OF EGRESS 10.1

Section
 1001 Administration 10.1
 1002 Definitions 10.1
 1003 General Means of Egress 10.1
 1004 Occupant Load 10.2
 1005 Means of Egress Sizing 10.4
 1006 Means of Egress Illumination 10.5
 1007 Accessible Means of Egress 10.5
 1008 Doors, Gates and Turnstiles 10.5
 1009 Stairways 10.12
 1010 Ramps 10.16
 1011 Exit Signs 10.18
 1012 Handrails 10.18
 1013 Guards 10.20
 1014 Exit Access 10.21
 1015 Exit and Exit Access Doorways 10.22
 1016 Exit Access Travel Distance 10.23
 1017 Aisles 10.24
 1018 Corridors 10.24
 1019 Egress Balconies 10.25
 1020 Exits 10.26
 1021 Number of Exits and Exit Configuration 10.26
 1022 Interior Exit Stairways and Ramps 10.28
 1023 Exit Passageways 10.29
 1024 Luminous Egress Path Markings 10.30
 1025 Horizontal Exits 10.31
 1026 Exits for Exit Stairways and Ramps 10.32
 1027 Exit Discharge 10.33
 1028 Assembly 10.34
 1029 Emergency Escape and Rescue 10.38

CHAPTER 11 ACCESSIBILITY 11.1

Section
 1101 General 11.1
 1102 Definitions (Reserved) 11.1
 1103 Scoping Requirements (Reserved) 11.1
 1104 Accessible Route (Reserved) 11.1
 1105 Accessible Entrances (Reserved) 11.1
 1106 Parking and Passenger Loading Facilities (Reserved) 11.1
 1107 Dwelling Units and Sleeping Units (Reserved) 11.1
 1108 Special Occupancies (Reserved) 11.1
 1109 Other Features and Facilities (Reserved) 11.1
 1110 Signage (Reserved) 11.1

CHAPTER 12 INTERIOR ENVIRONMENT 12.1

Section
 1201 General 12.1
 1202 Definitions 12.1
 1203 Ventilation 12.1
 1204 Temperature Control 12.2
 1205 Lighting 12.2
 1206 Yards or Courts 12.3
 1207 Sound Transmission 12.3
 1208 Interior Space Dimensions 12.3
 1209 Access to Unoccupied Spaces 12.4
 1210 Toilet and Bathroom Requirements 12.4

CHAPTER 13 ENERGY EFFICIENCY 13.1

Section
 1301 General 13.1

CHAPTER 14 EXTERIOR WALLS 14.1

Section
 1401 General 14.1
 1402 Definitions 14.1
 1403 Performance Requirements 14.1
 1404 Materials 14.2
 1405 Installation of Wall Coverings 14.3
 1406 Combustible Materials on the Exterior Side of Exterior Walls 14.8
 1407 Metal Composite Materials (MCM) 14.9

TABLE OF CONTENTS

1408 Exterior Insulation and Finish Systems (EIFS) 14.12

1409 High-pressure Decorative Exterior-grade Compact Laminates (HPL) 14.12

CHAPTER 15 ROOF ASSEMBLIES AND ROOFTOP STRUCTURES 15.1

Section

1501 General 15.1

1502 Definitions 15.1

1503 Weather Protection 15.2

1504 Performance Requirements 15.2

1505 Fire Classification 15.3

1506 Materials 15.4

1507 Requirements for Roof Coverings 15.4

1508 Roof Insulation 15.14

1509 Rooftop Structures 15.15

1510 Reroofing 15.18

1511 Solar Photovoltaic Panels/Modules 15.18

1512 High-Velocity Hurricane Zones—General 15.18

1513 High-Velocity Hurricane Zones—Definitions 15.20

1514 High-Velocity Hurricane Zones—Weather Protection 15.21

1515 High-Velocity Hurricane Zones—Performance Requirements 15.22

1516 High-Velocity Hurricane Zones—Fire Classification 15.23

1517 High-Velocity Hurricane Zones—Materials 15.23

1518 High-Velocity Hurricane Zones—Roof Coverings with Slopes 2:12 or Greater 15.24

1519 High-Velocity Hurricane Zones—Roof Coverings with Slopes Less than 2:12 15.27

1520 High-Velocity Hurricane Zones—Roof Insulation 15.29

1521 High-Velocity Hurricane Zones—Reroofing 15.29

1522 High-Velocity Hurricane Zones—Rooftop Structures and Components 15.31

1523 High-Velocity Hurricane Zones—Testing 15.31

1524 High-Velocity Hurricane Zones—Required Owners Notification for Roofing Considerations 15.35

1525 High-Velocity Hurricane Zones Uniform Permit Application 15.36

CHAPTER 16 STRUCTURAL DESIGN 16.1

Section

1601 General 16.1

1602 Definitions and Notations 16.1

1603 Construction Documents 16.1

1604 General Design Requirements 16.2

1605 Load Combinations 16.5

1606 Dead Loads 16.6

1607 Live Loads 16.7

1608 Snow Loads 16.13

1609 Wind Loads 16.16

1610 Soil Lateral Loads 16.27

1611 Rain Loads 16.28

1612 Flood Loads 16.29

1613 Earthquake Loads 16.37

1614 Atmospheric Loads 16.47

1615 Structural Integrity 16.47

1616 High-Velocity Hurricane Zones—General, Protection, Volume Changes and Minimum Loads 16.48

1617 High-Velocity Hurricane Zones—Roof Drainage (Reserved) 16.50

1618 High-Velocity Hurricane Zones—Special Load Considerations 16.50

1619 High-Velocity Hurricane Zones—Live Load Reductions (Reserved) 16.51

1620 High-Velocity Hurricane Zones—Wind Loads 16.51

1621 High-Velocity Hurricane Zones—Overturning Moment and Uplift 16.51

1622 High-Velocity Hurricane Zones—Screen Enclosures 16.51

1623 High-Velocity Hurricane Zones—Live Loads Posted and Occupancy Permits (Reserved) 16.52

1624 High-Velocity Hurricane Zones—Foundation Design (Reserved) 16.52

1625 High-Velocity Hurricane Zones—Load Tests 16.52

1626 High-Velocity Hurricane Zones—Impact Tests for Wind-borne Debris 16.52

CHAPTER 17 SPECIAL INSPECTIONS AND TESTS 17.1

Section

1701 General 17.1

1702 Definitions 17.1

1703	Approvals	17.1	1824	High-Velocity Hurricane Zones—Precast Concrete Piles (Reserved)	18.30
1704	Special Inspections, Contractor Responsibility and Structural Observations (Reserved)	17.2	1825	High-Velocity Hurricane Zones—Prestressed Precast Concrete Piles (Reserved)	18.30
1705	Required Verification and Inspection (Reserved)	17.2	1826	High-Velocity Hurricane Zones—Cast-in-Place (Reserved)	18.30
1706	Design Strengths of Materials	17.2	1827	High-Velocity Hurricane Zones—Rolled Structural Shapes (Reserved)	18.31
1707	Alternative Test Procedure	17.2	1828	High-Velocity Hurricane Zones—Special Piles or Special Conditions (Reserved)	18.31
1708	Test Safe Load	17.2	1829	High-Velocity Hurricane Zones—Load Tests on Piles (Reserved)	18.31
1709	In-situ Load Tests	17.2	1830	High-Velocity Hurricane Zones—Foundation Walls and Grade Beams (Reserved)	18.31
1710	Preconstruction Load Tests	17.3	1831	High-Velocity Hurricane Zones—Grades Under Buildings (Reserved)	18.31
1711	Material and Test Standards	17.7	1832	High-Velocity Hurricane Zones—Retaining Walls (Reserved)	18.31
CHAPTER 18 SOILS AND FOUNDATIONS 18.1			1833	High-Velocity Hurricane Zones—Seawalls and Bulkheads (Reserved)	18.31
Section			1834	High-Velocity Hurricane Zones—Soil Improvement (Reserved)	18.31
1801	General	18.1	CHAPTER 19 CONCRETE 19.1		
1802	Definitions	18.1	Section		
1803	Geotechnical Investigations	18.1	1901	General	19.1
1804	Excavation, Grading and Fill	18.3	1902	Definitions	19.1
1805	Dampproofing and Waterproofing	18.4	1903	Specifications for Tests and Materials	19.1
1806	Presumptive Load-bearing Values of Soils	18.5	1904	Durability Requirements	19.1
1807	Foundation Walls, Retaining Walls and Embedded Posts and Poles	18.6	1905	Modifications to ACI 318	19.1
1808	Foundations	18.13	1906	Structural Plain Concrete	19.6
1809	Shallow Foundations	18.16	1907	Minimum Slab Provisions	19.6
1810	Deep Foundations	18.17	1908	Anchorage to Concrete—Allowable Stress Design	19.6
1811	Reserved	18.29	1909	Anchorage to Concrete—Strength Design	19.7
1812	Reserved	18.29	1910	Shotcrete	19.7
1813	Reserved	18.29	1911	Reinforced Gypsum Concrete	19.8
1814	Reserved	18.29	1912	Concrete-filled Pipe Columns	19.8
1815	Reserved	18.29	1913	Special Wind Provisions for Concrete	19.8
1816	Termite Protection	18.29	1914	Reserved	19.9
1817	High-Velocity Hurricane Zones—Excavations (Reserved)	18.30	1915	Reserved	19.9
1818	High-Velocity Hurricane Zones—Bearing Capacity of Soil (Reserved)	18.30	1916	Reserved	19.9
1819	High-Velocity Hurricane Zones—Soil Bearing Foundations (Reserved)	18.30	1917	Lightweight Insulating Concrete Roofs	19.9
1820	High-Velocity Hurricane Zones—Concrete Slabs on Fill (Reserved)	18.30	1918	Reserved	19.10
1821	High-Velocity Hurricane Zones—Monolithic Footings (Reserved)	18.30	1919	High-Velocity Hurricane Zones—General (Reserved)	19.10
1822	High-Velocity Hurricane Zones—Pile Foundations (Reserved)	18.30			
1823	High-Velocity Hurricane Zones—Wood Piles (Reserved)	18.30			

TABLE OF CONTENTS

1920	High-Velocity Hurricane Zones— Standards (Reserved)	19.10	2117	Reserved	21.17
1921	High-Velocity Hurricane Zones— Definitions (Reserved)	19.10	2118	High-Velocity Hurricane Zones— Design (Reserved)	21.17
1922	High-Velocity Hurricane Zones— Materials (Reserved).	19.10	2119	High-Velocity Hurricane Zones—Quality, Tests, and Approvals	21.17
1923	High-Velocity Hurricane Zones— Concrete Quality (Reserved).	19.10	2120	High-Velocity Hurricane Zones— Allowable Unit Stresses in Unit Masonry (Reserved)	21.17
1924	High-Velocity Hurricane Zones— Mixing and Placing Concrete (Reserved) .	19.10	2121	High-Velocity Hurricane Zones—Construction Details.	21.17
1925	High-Velocity Hurricane Zones— Formwork, Embedded Pipes and Construction Joints (Reserved)	19.10	2122	High-Velocity Hurricane Zones— Reinforced Unit Masonry	21.20
1926	High-Velocity Hurricane Zones—Details of Reinforcement (Reserved)	19.10	CHAPTER 22 STEEL 22.1		
1927	High-Velocity Hurricane Zones— Precast Concrete Units (Reserved)	19.10	Section		
1928	High-Velocity Hurricane Zones—Prestressed Concrete (Reserved)	19.10	2201	General	22.1
1929	High-Velocity Hurricane Zones—Pneumatically Placed Concrete (Shotcrete) (Reserved) . .	19.10	2202	Definitions	22.1
CHAPTER 20 ALUMINUM 20.1			2203	Identification and Protection of Steel for Structural Purposes	22.1
Section			2204	Connections	22.1
2001	General	20.1	2205	Structural Steel	22.1
2002	Materials	20.1	2206	Composite Structural Steel and Concrete Structures.	22.1
2003	High-Velocity Hurricane Zones— Aluminum	20.3	2207	Steel Joists	22.2
CHAPTER 21 MASONRY 21.1			2208	Steel Cable Structures.	22.2
Section			2209	Steel Storage Racks	22.3
2101	General	21.1	2210	Cold-formed Steel.	22.3
2102	Definitions and Notations	21.1	2211	Cold-formed Steel Light-frame Construction	22.3
2103	Masonry Construction Materials.	21.3	2212	Gable Endwalls.	22.3
2104	Construction	21.4	2213	Reserved	22.3
2105	Quality Assurance	21.4	2214	High-Velocity Hurricane Zones General— Steel Construction.	22.4
2106	Seismic Design	21.6	2215	High-Velocity Hurricane Zones— Material.	22.5
2107	Allowable Stress Design	21.6	2216	High-Velocity Hurricane Zones—Design Loads	22.5
2108	Strength Design of Masonry	21.6	2217	High-Velocity Hurricane Zones—Minimum Thickness of Material.	22.5
2109	Empirical Design of Masonry.	21.7	2218	High-Velocity Hurricane Zones— Connections (Reserved)	22.5
2110	Glass Unit Masonry	21.9	2219	High-Velocity Hurricane Zones— Tubular Columns	22.5
2111	Masonry Fireplaces.	21.9	2220	High-Velocity Hurricane Zones— Protection of Metal (Reserved).	22.5
2112	Masonry Heaters	21.11	2221	High-Velocity Hurricane Zones—General— Open Web Steel Joists	22.5
2113	Masonry Chimneys	21.12			
2114	Termite Inspection	21.17			
2115	Special Wind Provisions for Masonry	21.17			
2116	Reserved	21.17			

2222 High-Velocity Hurricane Zones—
Cold-formed Steel Construction 22.6

2223 High-Velocity Hurricane Zones—
Preengineered, Prefabricated
Metal Building Systems and
Components
(Preengineered Structures) 22.7

2224 High-Velocity Hurricane Zones—Chain
Link Fences 22.8

CHAPTER 23 WOOD 23.1

Section

2301 General 23.1

2302 Definitions 23.1

2303 Minimum Standards and Quality 23.1

2304 General Construction Requirements 23.5

2305 General Design Requirements for
Lateral Force-resisting Systems 23.16

2306 Allowable Stress Design 23.17

2307 Load and Resistance Factor Design 23.24

2308 Conventional Light-frame Construction 23.24

2309 Reserved 23.67

2310 Reserved 23.67

2311 Reserved 23.67

2312 Reserved 23.67

2313 Reserved 23.67

2314 High-Velocity Hurricane Zones 23.67

2315 High-Velocity Hurricane Zones—
Quality 23.68

2316 High-Velocity Hurricane Zones—
Sizes (Reserved) 23.69

2317 High-Velocity Hurricane Zones—
Unit Stresses 23.69

2318 High-Velocity Hurricane Zones—
Vertical Framing 23.69

2319 High-Velocity Hurricane Zones—Horizontal
Framing 23.71

2320 High-Velocity Hurricane Zones—
Firestops (Reserved) 23.75

2321 High-Velocity Hurricane Zones—
Anchorage 23.75

2322 High-Velocity Hurricane Zones—
Sheathing 23.76

2323 High-Velocity Hurricane Zones—
Furring (Reserved) 23.78

2324 High-Velocity Hurricane Zones—
Connectors 23.78

2325 High-Velocity Hurricane Zones—Wood
Supporting Masonry 23.78

2326 High-Velocity Hurricane Zones—
Protection of Wood 23.78

2327 High-Velocity Hurricane Zones—Fire
Retardant Wood (Reserved) 23.79

2328 High-Velocity Hurricane Zones—Wood
Fences 23.79

2329 High-Velocity Hurricane Zones—
Fire-retardant-treated Shakes
and Shingles (Reserved) 23.80

2330 High-Velocity Hurricane Zones—
Wood Blocking 23.80

CHAPTER 24 GLASS AND GLAZING 24.1

Section

2401 General 24.1

2402 Definitions 24.1

2403 General Requirements for Glass 24.1

2404 Wind, Snow, Seismic and
Dead Loads on Glass 24.1

2405 Sloped Glazing and Skylights 24.3

2406 Safety Glazing 24.4

2407 Glass in Handrails and Guards 24.6

2408 Glazing in Athletic Facilities 24.7

2409 Glass in Elevator Hoistways and
Elevator Cars 24.7

2410 High-Velocity Hurricane Zones—
General 24.7

2411 High-Velocity Hurricane Zones—Windows,
Doors, Glass and Glazing 24.8

2412 High-Velocity Hurricane Zones—
Glass Veneer 24.10

2413 High-Velocity Hurricane Zones—Storm
Shutters/External Protective Devices 24.11

2414 High-Velocity Hurricane Zones—Curtain
Walls 24.11

2415 High-Velocity Hurricane Zones—Structural
Glazing Systems 24.12

**CHAPTER 25 GYPSUM BOARD
AND PLASTER 25.1**

Section

2501 General 25.1

2502 Definitions 25.1

2503 Inspection 25.1

2504 Vertical and Horizontal Assemblies 25.1

2505	Shear Wall Construction	25.1
2506	Gypsum Board Materials	25.1
2507	Lathing and Plastering	25.2
2508	Gypsum Construction	25.2
2509	Gypsum Board in Showers and Water Closets	25.3
2510	Lathing and Furring for Cement Plaster (Stucco)	25.3
2511	Interior Plaster	25.4
2512	Exterior Plaster	25.4
2513	Exposed Aggregate Plaster	25.5
2514	High-Velocity Hurricane Zones—Lathing (Reserved)	25.6
2515	High-Velocity Hurricane Zones—Plaster (Reserved)	25.6
2516	High-Velocity Hurricane Zones—Stucco (Reserved)	25.6
2517	High-Velocity Hurricane Zones—Gypsum Board Products and Accessory Items (Reserved)	25.6
2518	High-Velocity Hurricane Zones—Suspended and Furred Ceilings (Reserved)	25.6
2519	High-Velocity Hurricane Zones—Asbestos (Reserved)	25.6
2520	High-Velocity Hurricane Zones—Tile (Reserved)	25.6

CHAPTER 26 PLASTIC26.1

Section		
2601	General	26.1
2602	Definitions	26.1
2603	Foam Plastic Insulation	26.1
2604	Interior Finish and Trim	26.4
2605	Plastic Veneer	26.4
2606	Light-transmitting Plastics	26.5
2607	Light-transmitting Plastic Wall Panels	26.6
2608	Light-transmitting Plastic Glazing	26.7
2609	Light-transmitting Plastic Roof Panels	26.7
2610	Light-transmitting Plastic Skylight Glazing	26.7
2611	Light-transmitting Plastic Interior Signs	26.8
2612	Fiber-reinforced Polymer	26.8
2613	Reflective Plastic Core Insulation	26.9
2614	High-Velocity Hurricane Zones—Plastics	26.9

CHAPTER 27 ELECTRICAL27.1

Section		
2701	General	27.1
2702	Emergency and Standby Power Systems	27.1

CHAPTER 28 MECHANICAL SYSTEMS28.1

Section		
2801	General	28.1

CHAPTER 29 PLUMBING SYSTEMS29.1

Section		
2901	General	29.1
2902	Minimum Plumbing Facilities	29.1

CHAPTER 30 ELEVATORS AND CONVEYING SYSTEMS30.1

Section		
3001	General	30.1
3002	Hoistway Enclosures	30.2
3003	Emergency Operations	30.2
3004	Hoistway Venting	30.3
3005	Conveying Systems	30.3
3006	Machine Rooms	30.4
3007	Fire Service Access Elevator	30.4
3008	Occupant Evacuation Elevators	30.6
3009	Elevator Accessibility Requirements for the Physically Handicapped	30.7
3010	Serial Numbers	30.8
3011	Electrolysis Protection for Underground Hydraulic Elevator Cylinders	30.8
3012	Alterations to Electric and Hydraulic Elevators and Escalators	30.9

CHAPTER 31 SPECIAL CONSTRUCTION31.1

Section		
3101	General	31.1
3102	Membrane Structures	31.1
3103	Temporary Structures	31.2
3104	Pedestrian Walkways and Tunnels	31.2
3105	Awnings and Canopies	31.3
3106	Marquees	31.4
3107	Signs	31.5
3108	Telecommunication and Broadcast Towers	31.5

3109 Structures Seaward of a Coastal Construction Control line 31.5

3110 Automatic Vehicular Gates 31.8

3111 Solar Photovoltaic Panels/Modules 31.8

3112 Deposit of Material in Tidewater Regulated 31.8

3113 Lighting, Mirrors, Landscaping 31.9

3114 Airport Noise 31.9

CHAPTER 32 ENCROACHMENTS INTO THE PUBLIC RIGHT-OF-WAY 32.1

Section

3201 General 32.1

3202 Encroachments 32.1

CHAPTER 33 SAFEGUARDS DURING CONSTRUCTION 33.1

Section

3301 General 33.1

3302 Construction Safeguards 33.1

3303 Demolition 33.1

3304 Site Work 33.1

3305 Sanitary 33.2

3306 Protection of Pedestrians 33.2

3307 Protection of Adjoining Property 33.3

3308 Temporary Use of Streets, Alleys and Public Property 33.3

3309 Fire Extinguishers 33.3

3310 Means of Egress 33.3

3311 Standpipes 33.3

3312 Automatic Sprinkler System 33.4

3313 Water Supply for Fire Protection 33.4

CHAPTER 34 EXISTING BUILDINGS AND STRUCTURES 34.1

Section

3401 General 34.1

3402 Definitions (Reserved) 34.1

3403 Additions (Reserved) 34.1

3404 Alterations (Reserved) 34.1

3405 Repairs (Reserved) 34.1

3406 Fire Escapes (Reserved) 34.1

3407 Glass Replacement (Reserved) 34.1

3408 Change of Occupancy (Reserved) 34.1

3409 Historic Buildings (Reserved) 34.1

3410 Moved Structures (Reserved) 34.1

3411 Accessibility for Existing Buildings (Reserved) 34.1

3412 Compliance Alternatives (Reserved) 34.1

CHAPTER 35 REFERENCED STANDARDS 35.1

CHAPTER 36 FLORIDA FIRE PREVENTION CODE 36.1

APPENDIX A EMPLOYEE QUALIFICATIONS A.1

Section

A101 Building Official Qualifications A.1

A102 Referenced Standards A.1

APPENDIX B CHAPTER 9B-52, F.A.C. FLORIDA STANDARD FOR PASSIVE RADON-RESISTANT CONSTRUCTION B.1

Chapter B101 GENERAL B.3

Section

B101 General B.3

B102 Intent B.3

B103 Scope B.3

B104 Compliance B.3

Chapter B201 DEFINITIONS B.3

Section

B201 General B.3

B202 Definitions B.3

Chapter B301 CONSTRUCTION REQUIREMENTS FOR PASSIVE RADON CONTROL B.4

Section

B301 General B.4

B302 Sub-slab and Soil Membranes B.4

B303 Floor slab-on-grade Buildings B.5

B304 Slab-below-grade Construction B.6

B305 Buildings with Crawl Spaces B.7

B306 Buildings with Combination Floor Systems B.7

B307 Space Conditioning Systems B.7

TABLE OF CONTENTS

**APPENDIX C FLORIDA STANDARD FOR
MITIGATION OF RADON IN
EXISTING BUILDINGS C.1**

Chapter C1 ADMINISTRATION..... C.2

Section

C101 General C.2
 C102 Alternate Materials and Methods C.2
 C103 Compliance C.2

Chapter C2 DEFINITIONS..... C.2

Section

C201 General C.2
 C202 Definitions C.2

Chapter C3 TESTING C.3

Section

C301 General C.3

**Chapter C4 STRUCTURAL SEALING AND HVAC
SYSTEM BALANCING C.3**

Section

C401 General C.3
 C402 Sealing Cracks and Joints in Concrete
 Floors and Walls C.3
 C403 Floors Over Crawl Space C.4
 C404 Combined Construction Types C.4
 C405 Approved Sealant Materials C.4
 C406 Space Conditioning and Ventilation Systems.. C.4

Chapter C5 ENGINEERED SYSTEMS C.4

Section

C501 General C.4
 C502 Design Criteria C.5

**Chapter C6 SOIL DEPRESSURIZATION
SYSTEMS C.5**

Section

C601 General C.5
 C602 Soil Depressurization System
 Installation Criteria C.5
 C603 Soil Depressurization System Design
 Criteria C.6
 C604 Crawl Space Ventilation C.6

APPENDIX D FIRE DISTRICTS D.1

Section

D101 General D.1
 D102 Building Restrictions D.1
 D103 Changes to Buildings D.2
 D104 Buildings Located Partially in the
 Fire District D.2
 D105 Exceptions to Restrictions in Fire District D.2
 D106 Referenced Standards D.3

**APPENDIX E FLORIDA STANDARD FOR
RADON-RESISTANT NEW
COMMERCIAL
CONSTRUCTION E.1**

Chapter E101 GENERAL..... E.1

Section

E101 General E.1
 E102 Intent E.1
 E103 Scope E.1
 E104 Compliance E.1

Chapter E201 DEFINITIONS E.2

Section

E201 General E.2
 E202 Definitions E.2

**Chapter E301 CONSTRUCTION REQUIREMENTS
FOR PASSIVE CONTROLS..... E.4**

Section

E301 General E.4
 E302 Soil-Gas-Retarder Membrane E.4
 E303 Concrete Floors in Contact with Soil Gas E.5
 E304 Walls in Contact with Soil Gas E.7
 E305 Buildings with Crawl Spaces E.7
 E306 Space Conditioning Systems and
 Ventilating E.8
 E307 Air Distribution Systems E.8

**Chapter E401 ACTIVE SOIL-DEPRESSURIZATION
SYSTEMS E.9**

Section

E401 General E.9
 E402 System Components E.9
 E403 ASD System Design Requirements E.9

APPENDIX F RODENTPROOFING F.1

Section

F101 General F.1

APPENDIX G FLOOD-RESISTANT CONSTRUCTION G.1

Section

G101 Administration G.1
 G102 Applicability G.1
 G103 Powers and Duties. G.1
 G104 Permits G.2
 G105 Variances. G.2
 G201 Definitions. G.3
 G301 Subdivisions G.4
 G401 Site Improvement G.4
 G501 Manufactured Homes G.4
 G601 Recreational Vehicles G.5
 G701 Tanks G.5
 G801 Other Building Work G.5
 G901 Temporary Structures and
 Temporary Storage G.5
 G1001 Utility and Miscellaneous Group U G.5
 G1101 Referenced Standards G.6

APPENDIX H SIGNS H.1

Section

H101 General H.1
 H102 Definitions. H.1
 H103 Location H.1
 H104 Identification H.1
 H105 Design and Construction. H.2
 H106 Electrical H.2
 H107 Combustible Materials H.2
 H108 Animated Devices. H.2
 H109 Ground Signs. H.2
 H110 Roof Signs. H.3
 H111 Wall Signs. H.3
 H112 Projecting Signs H.3
 H113 Marquee Signs. H.4
 H114 Portable Signs H.4
 H115 Referenced Standards H.4

APPENDIX I PATIO COVERS I.1

Section

I101 General I.1

I102 Definitions I.1
 I103 Exterior Walls and Openings I.1
 I104 Height I.1
 I105 Structural Provisions. I.1

APPENDIX J GRADING J.1

Section

J101 General J.1
 J102 Definitions J.1
 J103 Permits Required J.1
 J104 Permit Application and Submittals. J.1
 J105 Inspections J.2
 J106 Excavations. J.2
 J107 Fills J.2
 J108 Setbacks J.2
 J109 Drainage and Terracing J.4
 J110 Erosion Control. J.4
 J111 Referenced Standards J.4

APPENDIX K ADMINISTRATIVE PROVISIONS K.1

Section

K101 General K.1
 K102 Applicability K.1
 K103 Permits K.1
 K104 Construction Documents K.2
 K105 Alternative Engineered Design. K.2
 K106 Required Inspections K.2
 K107 Prefabricated Construction. K.2
 K108 Testing K.3
 K109 Reconnection K.3
 K110 Condemning Electrical Systems. K.3
 K111 Electrical Provisions. K.3

APPENDIX L EARTHQUAKE RECORDING INSTRUMENTATION L.1

L101 General L.1

APPENDIX M TSUNAMI-GENERATED FLOOD HAZARD M.1

M101 Tsunami-generated Flood Hazard M.1
 M102 Referenced Standards M.1

INDEX INDEX.1