



Planning, design, operation, and maintenance of wastewater treatment in northern communities using lagoon and wetland systems



Legal Notice for Standards

Canadian Standards Association (operating as “CSA Group”) develops standards through a consensus standards development process approved by the Standards Council of Canada. This process brings together volunteers representing varied viewpoints and interests to achieve consensus and develop a standard. Although CSA Group administers the process and establishes rules to promote fairness in achieving consensus, it does not independently test, evaluate, or verify the content of standards.

Disclaimer and exclusion of liability

This document is provided without any representations, warranties, or conditions of any kind, express or implied, including, without limitation, implied warranties or conditions concerning this document’s fitness for a particular purpose or use, its merchantability, or its non-infringement of any third party’s intellectual property rights. CSA Group does not warrant the accuracy, completeness, or currency of any of the information published in this document. CSA Group makes no representations or warranties regarding this document’s compliance with any applicable statute, rule, or regulation.

IN NO EVENT SHALL CSA GROUP, ITS VOLUNTEERS, MEMBERS, SUBSIDIARIES, OR AFFILIATED COMPANIES, OR THEIR EMPLOYEES, DIRECTORS, OR OFFICERS, BE LIABLE FOR ANY DIRECT, INDIRECT, OR INCIDENTAL DAMAGES, INJURY, LOSS, COSTS, OR EXPENSES, HOWSOEVER CAUSED, INCLUDING BUT NOT LIMITED TO SPECIAL OR CONSEQUENTIAL DAMAGES, LOST REVENUE, BUSINESS INTERRUPTION, LOST OR DAMAGED DATA, OR ANY OTHER COMMERCIAL OR ECONOMIC LOSS, WHETHER BASED IN CONTRACT, TORT (INCLUDING NEGLIGENCE), OR ANY OTHER THEORY OF LIABILITY, ARISING OUT OF OR RESULTING FROM ACCESS TO OR POSSESSION OR USE OF THIS DOCUMENT, EVEN IF CSA GROUP HAS BEEN ADVISED OF THE POSSIBILITY OF SUCH DAMAGES, INJURY, LOSS, COSTS, OR EXPENSES.

In publishing and making this document available, CSA Group is not undertaking to render professional or other services for or on behalf of any person or entity or to perform any duty owed by any person or entity to another person or entity. The information in this document is directed to those who have the appropriate degree of experience to use and apply its contents, and CSA Group accepts no responsibility whatsoever arising in any way from any and all use of or reliance on the information contained in this document.

CSA Group is a private not-for-profit company that publishes voluntary standards and related documents. CSA Group has no power, nor does it undertake, to enforce compliance with the contents of the standards or other documents it publishes.

Intellectual property rights and ownership

As between CSA Group and the users of this document (whether it be in printed or electronic form), CSA Group is the owner, or the authorized licensee, of all works contained herein that are protected by copyright, all trade-marks (except as otherwise noted to the contrary), and all inventions and trade secrets that may be contained in this document, whether or not such inventions and trade secrets are protected by patents and applications for patents. Without limitation, the unauthorized use, modification, copying, or disclosure of this document may violate laws that protect CSA Group’s and/or others’ intellectual property and may give rise to a right in CSA Group and/or others to seek legal redress for such use, modification, copying, or disclosure. To the extent permitted by treaty or by law, CSA Group reserves all intellectual property rights in this document.

Patent rights

Attention is drawn to the possibility that some of the elements of this standard may be the subject of patent rights. CSA Group shall not be held responsible for identifying any or all such patent rights. Users of this standard are expressly advised that determination of the validity of any such patent rights is entirely their own responsibility.

Authorized use of this document

This document is being provided by CSA Group for informational and non-commercial use only. The user of this document is authorized to do only the following:

If this document is in electronic form:

- load this document onto a computer for the sole purpose of reviewing it;
- search and browse this document; and
- print this document if it is in PDF format.

Limited copies of this document in print or paper form may be distributed only to persons who are authorized by CSA Group to have such copies, and only if this Legal Notice appears on each such copy.

In addition, users may not and may not permit others to

- alter this document in any way, or remove this Legal Notice from the attached standard;
- sell this document without authorization from CSA Group; or
- make an electronic copy of this document.

If you do not agree with any of the terms and conditions contained in this Legal Notice, you may not load or use this document or make any copies of the contents hereof, and if you do make such copies, you are required to destroy them immediately. Use of this document constitutes your acceptance of the terms and conditions of this Legal Notice.



Revision History

CSA W203:19, Planning, design, operation, and maintenance of wastewater treatment in northern communities using lagoon and wetland systems

Errata — October 2019	Revision symbol (in margin)
Technical Committee Subcommittee	Δ

Currently in preview, click buy full version

Standards Update Service

CSA W203:19
June 2019

Title: *Planning, design, operation, and maintenance of wastewater treatment in northern communities using lagoon and wetland systems*

To register for e-mail notification about any updates to this publication

- go to store.csagroup.org
- click on **Product Updates**

The **List ID** that you will need to register for updates to this publication is **127 11**.

If you require assistance, please e-mail techsupport@csagroup.org or call 416-747-2233.

Visit CSA Group's policy on privacy at www.csagroup.org/legal to find out how we protect your personal information.

Canadian Standards Association (operating as “CSA Group”), under whose auspices this National Standard has been produced, was chartered in 1919 and accredited by the Standards Council of Canada to the National Standards system in 1973. It is a not-for-profit, nonstatutory, voluntary membership association engaged in standards development and certification activities.

CSA Group standards reflect a national consensus of producers and users — including manufacturers, consumers, retailers, unions and professional organizations, and governmental agencies. The standards are used widely by industry and commerce and often adopted by municipal, provincial, and federal governments in their regulations, particularly in the fields of health, safety, building and construction, and the environment.

Individuals, companies, and associations across Canada indicate their support for CSA Group’s standards development by volunteering their time and skills to Committee work and supporting CSA Group’s objectives through sustaining memberships. The more than 7000 committee volunteers and the 2000 sustaining memberships together form CSA Group’s total membership from which its Directors are chosen. Sustaining memberships represent a major source of income for CSA Group’s standards development activities.

CSA Group offers certification and testing services in support of and as an extension to its standards development activities. To ensure the integrity of its certification process, CSA Group regularly and continually audits and inspects products that bear the CSA Group Mark.

In addition to its head office and laboratory complex in Toronto, CSA Group has regional branch offices in major centres across Canada and inspection and testing agencies in eight countries. Since 1919, CSA Group has developed the necessary expertise to meet its corporate mission: CSA Group is an independent service organization whose mission is to provide an open and effective forum for activities facilitating the exchange of goods and services through the use of standards, certification and related services to meet national and international needs.

For further information on CSA Group services, write to
CSA Group
178 Rexdale Boulevard
Toronto, Ontario, M9W 1R3
Canada



A National Standard of Canada is a standard developed by a Standards Council of Canada (SCC) accredited Standards Development Organization, in compliance with requirements and guidance set out by SCC. More information on National Standards of Canada can be found at www.scc.ca.

SCC is a Crown corporation within the portfolio of Innovation, Science and Economic Development (ISED) Canada. With the goal of enhancing Canada's economic competitiveness and social well-being, SCC leads and facilitates the development and use of national and international standards. SCC also coordinates Canadian participation in standards development, and identifies strategies to advance Canadian standardization efforts.

Accreditation services are provided by SCC to various customers, including product certifiers, testing laboratories, and standards development organizations. A list of SCC programs and accredited bodies is publicly available at www.scc.ca.

Standards Council of Canada
600-55 Metcalfe Street
Ottawa, Ontario, K1P 6L5
Canada



Standards Council of Canada
Conseil canadien des normes

Cette Norme Nationale du Canada est disponible en versions française et anglaise.

Although the intended primary application of this Standard is stated in its Scope, it is important to note that it remains the responsibility of the users to judge its suitability for their particular purpose.

**A trademark of the Canadian Standards Association, operating as “CSA Group”*

National Standard of Canada

CSA W203:19

***Planning, design, operation, and
maintenance of wastewater
treatment in northern communities
using lagoon and wetland systems***



®A trademark of the Canadian Standards Association,
operating as "CSA Group."



Published in June 2019 by CSA Group
A not-for-profit private sector organization
178 Rexdale Boulevard, Toronto, Ontario, Canada M9W 1R3

To purchase standards and related publications, visit our Online Store at store.csagroup.org
or call toll-free 1-800-463-6727 or 416-747-4044.

ICS 13.030.20
ISBN 978-1-4883-2224-2

© 2019 Canadian Standards Association
All rights reserved. No part of this publication may be reproduced in any form whatsoever
without the prior permission of the publisher.

Contents

Technical Committee on Northern Water, Wastewater and Stormwater	3
Subcommittee on Wastewater Treatment in Northern Communities Using Lagoon and Wetland Systems	4
Preface	5
0 Introduction	6
0.1 What is unique about the North and northern wastewater treatment	6
0.2 Challenges for wetlands and lagoons wastewater treatment systems in the North	6
0.3 Overview of wetlands and lagoons wastewater treatment systems	7
0.3.1 Overview of wastewater lagoon systems	7
0.3.2 Overview of wetland treatment areas	8
0.4 Purpose of this Standard	10
0.5 Users	11
1 Scope and application	11
1.1 Scope	11
1.2 Application	11
1.3 Exclusions	12
1.4 Terminology	12
2 Reference publications	12
3 Definitions and abbreviations	17
3.1 Definitions	17
3.2 Abbreviations	19
4 Planning and siting	20
4.1 General	20
4.2 Obtaining background information	21
4.2.1 General	21
4.2.2 Authorization and permitting	21
4.2.3 Consultation and engagement	22
4.3 Constraint mapping	23
4.4 Physical site characterization/assessment	24
4.4.1 General	24
4.4.2 Historical climate data	24
4.4.3 Climate change	25
4.4.4 Hydrologic data	25
4.4.5 Topographic data	26
4.4.6 Geotechnical investigation	26
4.4.7 Granular material assessment	26
4.4.8 Hydrogeological investigation	26
4.5 Treatment process design requirements	27
4.5.1 General	27
4.5.2 Wastewater volume projections	27

4.5.3	Wastewater quality estimation	28
4.5.4	Non-municipal sources of wastewater	29
4.5.5	Climatic data	29
4.5.6	Wastewater effluent criteria	29
4.5.7	Receiving environment	30
4.6	Lifecycle costing of lagoon and wetland systems	31
5	Design	31
5.1	Lagoon design	31
5.1.1	General	31
5.1.2	Identification of EQOs	32
5.1.3	Identification of storage requirements and discharge time periods	32
5.1.4	Potential treatment cell configurations and expected effluent quality	33
5.1.5	Detailed lagoon design	34
5.1.6	Sludge management considerations	39
5.2	Wetland design	40
5.2.1	General	40
5.2.2	Preliminary wetland planning and site assessment	41
5.2.3	Detailed WTA design and assessment	45
6	Operation, maintenance, and monitoring of lagoons and wetlands	50
6.1	Operational details	50
6.1.1	Community awareness	50
6.1.2	Lagoons	50
6.1.3	Wetlands	50
6.2	Maintenance requirements	50
6.2.1	Lagoons	50
6.2.2	Wetlands	51
6.3	Water quality monitoring	51
6.3.1	Lagoons	51
6.3.2	Wetlands	52
7	Closure and reclamation of lagoons and wetlands	52
<hr/>		
Annex A (informative)	Geotechnical site characterization for community wastewater system planning, design, construction, and maintenance	53
Annex B (informative)	Relevant regulations/acts in each northern province/territory	56
Annex C (informative)	Summary of wetland models which have been validated for the North	58
Annex D (informative)	Prediction of lagoon treatment performance	61

△ **Technical Committee on Northern Water, Wastewater and Stormwater**

J. Arsenault	Government of the Northwest Territories, Yellowknife, Northwest Territories, Canada <i>Category: Regulatory Authority</i>	
R. G. Campbell	Town of Inuvik, Inuvik, Northwest Territories, Canada <i>Category: Owner/Operator/Producer</i>	
R. Jamieson	Dalhousie University, Halifax, Nova Scotia, Canada <i>Category: General Interest</i>	
K. R. Johnson	AECOM Canada Ltd., Edmonton, Alberta, Canada <i>Category: General Interest</i>	
J. Lywood	PlusArctic, Halifax, Nova Scotia, Canada <i>Category: General Interest</i>	
E. Murphy	National Research Council of Canada, Ottawa, Ontario, Canada <i>Category: General Interest</i>	
H. Scott	Mackenzie Valley Land and Water Board, Yellowknife, Northwest Territories, Canada <i>Category: Regulatory Authority</i>	
B. Westwell	Nunavut Department of Community and Government Services, Iqaluit, Nunavut, Canada <i>Category: Owner/Operator/Producer</i>	
M. Pinatton	CSA Group, Toronto, Ontario, Canada	<i>Project Manager</i>

△ ***Subcommittee on Wastewater Treatment in Northern Communities Using Lagoon and Wetland Systems***

R. Jamieson	Dalhousie University, Halifax, Nova Scotia, Canada	<i>Chair</i>
J. Arsenault	Government of the Northwest Territories, Yellowknife, Northwest Territories, Canada	
G. Balch	Fleming College, Lindsay, Ontario, Canada	
R. G. Campbell	Town of Inuvik, Inuvik, Northwest Territories, Canada	
J. Hayward	Dalhousie University, Halifax, Nova Scotia, Canada	
J. Hazenberg	Government of the Northwest Territories, Yellowknife, Northwest Territories, Canada	
H. Scott	Mackenzie Valley Land and Water Board, Yellowknife, Northwest Territories, Canada	
G. Strong	Dillon Consulting Limited, Yellowknife, Northwest Territories, Canada	
B. Westwell	Nunavut Department of Community and Government Services, Iqaluit, Nunavut, Canada	
M. Pinatton	CSA Group, Toronto, Ontario, Canada	<i>Project Manager</i>

Preface

This is the first edition of CSA W203, *Planning, design, operation, and maintenance of wastewater treatment in northern communities using lagoon and wetland systems*.

Although this Standard is intended to be comprehensive, specific agencies may need to refine procedures as appropriate for their own usage.

The Standard was developed through the collaboration from many knowledgeable experts and representatives from Canada's territorial governments and the private sector.

CSA Group received funding for the development of this Guideline from the Standards Council of Canada, as part of the Northern Infrastructure Standardization Initiative with input from the Northern Advisory Committee (NAC).

This Standard was developed by the Subcommittee on Wastewater Treatment in Northern Communities Using Lagoon and Wetland Systems, under the jurisdiction of the Technical Committee on Northern Water, Wastewater and Stormwater and the Strategic Steering Committee on Natural Resources, and has been formally approved by the Technical Committee.

This Standard has been developed in compliance with Standards Council of Canada requirements for National Standards of Canada. It has been published as a National Standard of Canada by CSA Group.

Notes:

- 1) *Use of the singular does not exclude the plural (and vice versa) when the sense allows.*
- 2) *Although the intended primary application of this Standard is stated in its Scope, it is important to note that it remains the responsibility of the users of the Standard to judge its suitability for their particular purpose.*
- 3) *This Standard was developed by consensus, which is defined by CSA Policy governing standardization — Code of good practice for standardization as “substantial agreement. Consensus implies much more than a simple majority, but not necessarily unanimity”. It is consistent with this definition that a member may be included in the Technical Committee list and yet not be in full agreement with all clauses of this Standard.*
- 4) *To submit a request for interpretation of this Standard, please send the following information to inquiries@csagroup.org and include “Request for interpretation” in the subject line:*
 - a) *define the problem, making reference to the specific clause, and, where appropriate, include an illustrative sketch;*
 - b) *provide an explanation of circumstances surrounding the actual field condition; and*
 - c) *where possible, phrase the request in such a way that a specific “yes” or “no” answer will address the issue.*

Committee interpretations are processed in accordance with the CSA Directives and guidelines governing standardization and are available on the Current Standards Activities page at standardsactivities.csa.ca.
- 5) *This Standard is subject to review within five years from the date of publication. Suggestions for its improvement will be referred to the appropriate committee. To submit a proposal for change, please send the following information to inquiries@csagroup.org and include “Proposal for change” in the subject line:*
 - a) *Standard designation (number);*
 - b) *relevant clause, table, and/or figure number;*
 - c) *wording of the proposed change; and*
 - d) *rationale for the change.*

CSA W203:19

Planning, design, operation, and maintenance of wastewater treatment in northern communities using lagoon and wetland systems

0 Introduction

0.1 What is unique about the North and northern wastewater treatment

The North of Canada is very unique due to its climate, geography, geology, demography, and social aspects. The North is a region with long periods of extremely low temperatures; it is a region that is exceptionally large and remote; it is a region with permafrost and other ground-related engineering challenges; and it is a region of small, isolated communities with low population density. These unique attributes of northern communities can create challenges associated with municipal wastewater management.

0.2 Challenges for wetlands and lagoons wastewater treatment systems in the North

The treatment of domestic wastewaters in Canada's North has historically been accomplished primarily through the use of long-term detention in wastewater stabilization ponds (WSPs), commonly known as sewage lagoons.

Treated effluent from these ponds or lagoons is typically discharged to the receiving environment. Some lagoon systems discharge treated effluent directly to receiving water bodies; however, it is common practice to discharge to a natural land or to a wetland area. These wetlands vary greatly among northern communities, but are typically shallow lowlands that eventually drain into either a freshwater or marine receiving environment. These lowlands receiving treated effluent from sewage lagoons are referred to in this Standard as wetland treatment areas (WTAs). The function of a WTA is to provide ancillary treatment (polishing) beyond what can typically be accomplished by lagoon systems alone.

Many of the northern communities served by treatment lagoons and WTAs are isolated and are accessible only by air, by ice-road during a narrow period of time, or by ship during the brief summer. The remoteness of these communities, combined with the extreme climate, the logistical challenges of bedrock and/or permafrost, high utility costs, together with the lack of financial and human resources, represent significant impediments to the development and operation of mechanized wastewater treatment infrastructure commonly used in more southern locations of Canada (Hayward *et al.*, 2014; Chouinard *et al.*, 2014a).

It is due to these challenges that the majority of communities rely on centralized lagoon and WTA systems, as they are passive wastewater treatment technologies requiring relatively low maintenance. In some larger communities, sewage is conveyed via in-ground or above-ground pipe systems, but in most communities, vacuum trucks haul wastewater to the sewage lagoons.

In the majority of communities in the North, wastewater is stored in lagoons for a significant portion of the year with discharges occurring during the ice-free season. Ideally, lagoon discharges occur during late summer/early fall. This is to maximize the summer treatment potential, and to lower the water levels in the lagoons to increase the winter storage capacity (Ragush *et al.*, 2015).

The WTAs are different from constructed wetlands, as they are non-engineered, and in most cases, not intentionally created (Hayward *et al.*, 2014; Chouinard *et al.*, 2014a). Most WTAs have simply been created as lagoon effluent has been discharged to those areas, prior to eventual discharge in the receiving freshwater or marine environment. As such, they are open and diffuse systems, often with poorly defined boundaries and flow patterns (Kadlec and Wallace 2009); however, non-engineered WTAs can still provide some of the same wastewater treatment processes of engineered systems. Despite the similarity to natural wetlands, the WTAs are distinctly different from natural wetlands in their hydrology, vegetation, nutrient availability, and organic loading (Chouinard *et al.*, 2014b; Hayward *et al.*, 2014). They are also different from constructed wetlands which are designed or engineered to meet defined treatment targets.

These differences make the prediction of treatment efficiencies challenging, but despite these challenges, WTAs have been shown in multiple studies (Yates *et al.*, 2012; Hayward *et al.*, 2014; Doku and Heinke 1993, 1995; Dubuc 1986) to provide a significant ancillary treatment benefit without requiring a large investment in capital or operating costs. The major challenges in the operation of a hybrid lagoon/WTA treatment system is to ensure that the WTA is suitably sized to be able to accommodate the effluent decanted from lagoon systems and to be able to detain these effluents long enough to ensure adequate treatment.

0.3 Overview of wetlands and lagoons wastewater treatment systems

0.3.1 Overview of wastewater lagoon systems

Lagoons are impoundments (e.g., natural or constructed) that can be used to both store and treat municipal wastewater. They are common throughout Northern Canada because they are simple and inexpensive to construct, operate, and maintain, as compared to mechanical treatment plants. There are several different types of wastewater lagoons used within municipal wastewater treatment, which are generally characterized according to

- a) discharge regime; and
- b) level of oxygenation.

With respect to discharge regime, lagoons can be designed and operated as storage systems with seasonal discharge, or as flow-through systems that discharge effluent on a continuous basis throughout the year. In intermittent or seasonal discharge systems, wastewater is stored and treated in a lagoon for an entire year for optimum treatment, or only a portion of the year. Once the effluent has achieved pre-determined treatment objectives [effluent quality criteria (EQC) or else], discharge to the environment is approved. Typically, seasonal discharge will occur in the fall, but can also occur earlier during the open water season, depending on effluent quality and/or receiving environment conditions. Alternatively, lagoons may also be designed and operated as flow-through systems that discharge effluent on a continuous basis throughout the year. However, during the winter, treatment performance will be challenged by ice cover and lower temperatures.

With respect to level of oxygenation, lagoons have been conventionally classified as either aerobic, facultative, aerated, or anaerobic (see Table 1). Although aerobic treatment is used in Northern Québec, aerobic and aerated lagoons have not been widely employed in the Canadian North. Most northern lagoon systems would be classified as either anaerobic or facultative.

Table 1
Type of lagoon based on level of oxygenation
(See Clauses [0.3.1](#) and [D.3.3](#).)

Types of lagoon	Characteristics
Aerobic lagoons	a) 0.3–0.6 m operating water depth b) receive lower organic loading rates (< 22 kg BOD ₅ /ha-d), allowing complete oxygenation of water column
Facultative lagoons (also named waste stabilization ponds, or WSPs)	a) 1–2 m operating water depth b) receive lower organic loading rates (< 22 kg BOD ₅ /ha-d) c) upper water column is aerobic, via atmospheric reaeration and algae d) lower water column is anaerobic
Mechanically aerated lagoons	a) produces oxygenated conditions throughout the water column
Anaerobic lagoons	a) 2–5 m operating water depth b) receive higher organic loading rates (> 150 kg BOD ₅ /1000 m ³ -d) c) negligible amount of oxygen in water column

Source: Adapted from EPA 1983.

Other types of lagoon systems are natural lake lagoons [pre-existing natural lakes used as lagoons under previous guidelines in the Northwest Territories (NWT), with or without engineering modifications] and exfiltration lagoons. These types of lagoon systems are still used in several communities in the North, but should not be considered for a new treatment system.

0.3.2 Overview of wetland treatment areas

Wetland treatment areas are wetlands that receive wastewater effluent from lagoons for supplemental treatment. Many areas functioning as WTAs in the North were either historically low-lying areas that supported natural communities of wetland plant species, or tundra landscapes that developed wetland vegetation communities after receiving wastewater effluent for several years. Most northern WTAs are characterized by the natural landscape, meaning that the size, configuration, flow paths, vegetation types, and presence or absence of surface water are all dictated by the physical and biological attributes of the area. In some cases, the physical and hydrological attributes of these natural systems have been altered (engineered) to enhance treatment performance.

WTAs utilize natural biological, physical and chemical processes to treat municipal wastewater effluents. Treatment mechanisms include microbial degradation, plant uptake, sorption to soils and sediments, mechanical filtration and sedimentation, and microbial predation and competition. These treatment processes are often influenced by the rate the effluent flows through the wetland (slower flow rates often enhance treatment), temperature (higher temperatures favor increased microbial activity), and plant growth, which can aid in the uptake of certain nutrients.

Multiple studies have shown that northern WTAs can provide ancillary treatment needed to achieve effluent treatment objectives (Yates *et al.*, 2012, 2013; Hayward *et al.*, 2014; Chouinard *et al.*, 2014a). Wetlands present a low cost and low maintenance option for secondary and tertiary levels of treatment in Northern Canada. However, no two WTAs perform identically and each site needs to be individually characterized for the primary features that influence treatment performance.

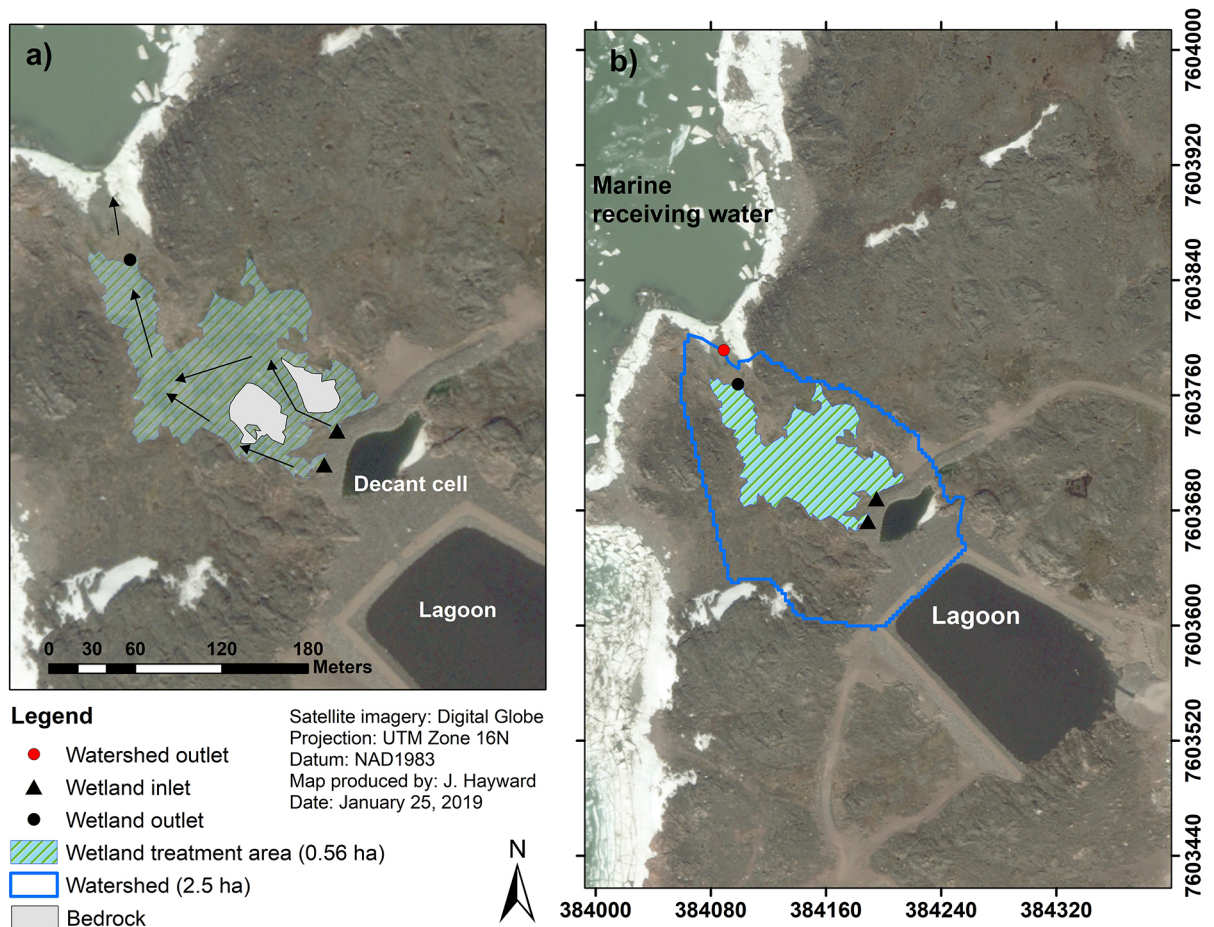
The use of constructed (engineered) wetlands might be an option in some regions of the North where climate, topography, permafrost conditions, and financial resources permit their use. Constructed

wetlands, by design, are more defined in terms of boundaries, hydraulics, and retention times. Therefore, treatment outcomes are more predictable and potentially more controllable than WTAs. Construction and operational costs, however, can be greater than WTAs due to the land requirements (footprint) needed to accommodate the larger flows generated during lagoon decants while maintaining adequate hydraulic retention times needed for adequate treatment. Figures [1](#) and [2](#) present examples of actual WTAs.

Figure 1
Wetland treatment area in Kugluktuk, Nunavut
(See Clause [0.3.2.](#))



Figure 2
Plan view of a wetland treatment area which receives effluent from a decant cell in Kugaaruk, Nunavut
 (See Clause [0.3.2.](#))



Note: The black arrows denote effluent flow direction.

Source: Adapted from Balch et al. (2018).

0.4 Purpose of this Standard

The purpose of this Standard is to address the following:

- a) procedures, protocols, or methods for collecting information and evaluating the conditions of a potential site for the purpose of planning, designing, and constructing municipal wastewater lagoon facilities and wetlands for wastewater treatment in northern communities;
- b) all lifecycle phases, from planning, designing, construction, operation, maintenance, and closure/remediation of municipal wastewater lagoon facilities and wetlands for wastewater treatment that incorporates climate change considerations. Such climate change considerations will include, but not be limited to,
 - i) potential effects of permafrost warming and active layer depth changes on effluent containment and stability of surrounding soil; and
 - ii) changes in precipitation characteristics affecting local hydrology and surface water balance from seasonal snowfall totals, warm-season precipitation changes, and spring snowmelt (e.g., high-intensity short duration events);

- c) piped continuous or truck collection inflow of effluent into municipal wastewater lagoons;
- d) description of monitoring practices specific to municipal wastewater lagoons and wetlands for wastewater treatment;
- e) best practices and accompanying guidance for periodic inspection and remedial procedures for existing and legacy systems;
- f) best practices and accompanying guidance for operations and maintenance activities that optimize treatment in a natural system;
- g) best practices for the management of sludge;
- h) field test methods, sampling protocols, and laboratory requirements; and
- i) closure and remediation considerations.

0.5 Users

The intended users of this Standard include the following:

- a) owners and operators of community infrastructures that may either contribute to, be affected by, or be relied upon for the treatment of effluent through the use of wastewater facilities;
- b) engineering practitioners, reviewers, and inspectors (e.g., consulting engineers, architects, and territorial or regional technical services staff), who are engaged to
 - i) design, assess, and sign off on plans and specifications for wastewater facilities in northern communities, and oversee the design, commissioning, and construction of those facilities; and
 - ii) assess and/or participate in the deliberation of decision to maintain, expand, remediate, or close existing municipal wastewater lagoons; and
- c) contractors who are engaged in order to prepare sites for wastewater facilities in northern communities and construct community infrastructures that either contribute to or play a role in managing those facilities.

1 Scope and application

1.1 Scope

This Standard specifically addresses the planning, design, operation, and maintenance of intermittent/seasonal discharge lagoon and wetland systems that are most appropriate for use in Northern regions, where effluent discharge is either difficult or not possible in colder months.

1.2 Application

In this Standard, the North is considered above the 54th parallel. It can also apply in communities where the same challenges, such as extreme climatic conditions and remoteness, appear.

This Standard applies across Northern Canada to all municipal wastewater lagoons and wetlands used for the treatment of municipal wastewater from

- a) cities, towns, villages, hamlets, settlements, community governments, and unorganized communities; and
- b) any site deemed in the public's interest by a regulatory authority.

WTAs should only be considered in remote northern environments where costs and feasibility are prohibitive for the use of constructed wetlands.