

BS 7910:2013



BSI Standards Publication

## Guide to methods for assessing the acceptability of flaws in metallic structures

**bsi.**

...making excellence a habit.™

**Publishing and copyright information**

The BSI copyright notice displayed in this document indicates when the document was last issued.

© The British Standards Institution 2013  
Published by BSI Standards Limited 2013

ISBN 978 0 580 74334 4

ICS 25.160.40

The following BSI references relate to the work on this standard:

Committee reference WEE/37  
Draft for comment 12/30241229 DC

**Publication history**

First published December 1999  
Second edition, July 2005  
Third (present) edition, December 2013

**Amendments issued since publication**

Date	Text affected
------	---------------

---

## Contents

Foreword *viii*

Introduction 1

1 Scope 4

2 Normative references 4

3 Symbols and definitions 5

4 Types of flaw 14

5 General guidance on assessment 15

6 Information required for assessment 17

7 Assessment for fracture resistance 25

8 Assessment for fatigue 60

9 Assessment of flaws under creep and creep/fatigue conditions 93

10 Assessment for other modes of failure 122

### Annexes

Annex A (normative) Evaluation under mode I, II and III loads 129

Annex B (informative) Assessment procedures for tubular joints in offshore structures 134

Annex C (informative) Fracture assessment procedures for pressure vessels and pipelines 141

Annex D (normative) Stress due to misalignment 145

Annex E (normative) Flaw recharacterization 171

Annex F (normative) Procedures for Leak-before-break assessment 152

Annex G (normative) The assessment of locally thinned areas (LTAs) 177

Annex H (normative) Reporting of fracture, fatigue or creep assessments 189

Annex I (informative) The significance of strength mis-match on the fracture behaviour of welded joints 192

Annex J (informative) Use of Charpy V-notch impact tests to estimate fracture toughness 200

Annex K (informative) Probabilistic assessment 205

Annex L (informative) Fracture toughness determination for welds 220

Annex M (normative) Stress intensity factor solutions 230

Annex N (informative) Allowance for constraint effects 285

Annex O (informative) Consideration of proof testing and warm prestressing 323

Annex P (normative) Compendium of reference stress and limit load solutions for homogeneous and strength mis-matched structures 330

Annex Q (normative) Residual stress distributions in as-welded joints 373

Annex R (normative) Determination of plasticity interaction effects with combined primary and secondary loading 394

Annex S (normative) Information for making high temperature crack growth assessments 399

Annex T (informative) Guidance on the use of NDT with ECA 412

Annex U (informative) Worked examples in fatigue assessment using the quality category approach 429

Bibliography 436

### List of figures

Figure 1 – Example of integrity management procedure for flaws 2

Figure 2 – Linearization of stress distributions 20

Figure 3 – Schematic representation of stress distribution across section 24

Figure 4 – Procedure for resolving flaws normal to principal stress 25

Figure 5 – General flowchart for fracture assessment 26

Figure 6 – Flowchart for Option 1 fracture assessment 27

Figure 7 – Flowchart for Option 2 fracture assessment 28

Figure 8 – Flowchart for Option 3 fracture assessment 29

Figure 9 – Flowchart for flaw characterization 31

Figure 10 – Definitions of flaw dimensions 32

- Figure 11 – Flaw alignment rules for non-coplanar flaws 33
- Figure 12 – Flaw interaction rules for coplanar flaws 34
- Figure 13 – De-rating values for yield/proof strength and tensile strength at temperatures above room temperature in C-Mn steels and duplex stainless steels (DSS): (not applicable to 13% Cr steels) from DNV OS F101 [6] 37
- Figure 14 – Ductile tearing assessment 56
- Figure 15 – Example of non-unique solutions 58
- Figure 16 – Schematic crack growth relationships 67
- Figure 17 – Recommended fatigue crack growth laws 67
- Figure 18 – Quality category *S-N* curves 74
- Figure 19 – Quality category approach: assessment of surface flaws in plates under axial loading 79
- Figure 20 – Quality category approach: assessment of surface flaws in flat material (no weld toe or other stress raiser) in bending 81
- Figure 21 – Quality category approach: assessment of embedded flaws in axially loaded joints 83
- Figure 22 – Quality category approach: assessment of weld toe flaws in axially loaded joints 85
- Figure 23 – Quality category approach: assessment of weld toe flaws in joints loaded in bending 91
- Figure 24 – Determination of temperature  $T_c$  at which 0.2% creep strain is accumulated at a stress level equal to the proof strength 102
- Figure 25 – Insignificant creep curves for austenitic steels 103
- Figure 26 – Insignificant creep curves for ferritic steels 103
- Figure 27 – Schematic behaviour of crack subjected to steady loading at elevated temperature 105
- Figure 28 – Schematic representation of crack propagation and failure conditions 106
- Figure 29 – Flowchart for overall creep assessment procedure 107
- Figure 30 – Schematic diagrams of typical relationships between crack velocity and stress intensity factor during SCC 124
- Figure 31 – Types of corrosion fatigue crack growth behaviour 126
- Figure A.1 – Definitions of loading modes 129
- Figure B.1 – Assessment method for fatigue crack growth in tubular joints 135
- Figure E.1 – Rules for re-characterization of flaws 151
- Figure F.1 – The peak before-break diagram 152
- Figure F.2 – Flowcharts for LbB procedures 155
- Figure F.3 – Example characterization of a complex flaw 160
- Figure F.4 – Schematic flaw profiles at breakthrough 162
- Figure F.5 – Development of flaw shapes for sub-critical growth of surface flaws 165
- Figure F.6 – Development of flaw shapes for sub-critical growth of through-wall flaws 165
- Figure F.7 – Recommended re-characterization of flaws at breakthrough subjected to ductile tearing loading 166
- Figure G.1 – Flow chart of assessment procedure 179
- Figure G.2 – Dimensions of an LTA 180
- Figure G.3 – Dimensions of a bend 182
- Figure G.4 – Dimensions of a sphere and vessel end 183
- Figure G.5 – Interaction between LTAs 185
- Figure I.1 – Idealized weld geometry – the parent and weld metals have yield strengths of  $\sigma_Y^W$  and  $\sigma_Y^P$  respectively 194
- Figure I.2 – Idealized definition of mis-match ratio,  $M$ , and construction of the equivalent stress-strain curve (weighted average of the other two curves) 195
- Figure J.1 – Flowchart for selecting an appropriate correlation for estimating fracture toughness from Charpy data 201
- Figure M.1 – Through-thickness flaw geometry 233

- Figure M.2 – Edge flaw geometry 233
- Figure M.3 – Surface flaw 234
- Figure M.4 – Elliptical integral as a function of  $a/2c$  used for the calculation of  $K_I$  for surface and embedded flaws 236
- Figure M.5 – Stress intensity magnification factor  $M_m$  for surface flaws in tension 236
- Figure M.6 – Stress intensity magnification factor  $M_b$  for surface flaws in bending 239
- Figure M.7 – Extended flaw geometry 240
- Figure M.8 – Embedded flaw 241
- Figure M.9 – Stress intensity magnification factor  $M_m$  for embedded flaws in tension (at point nearest material surface) 242
- Figure M.10 – Stress intensity magnification factor  $M_b$  for embedded flaws in bending 243
- Figure M.11 – Corner flaw geometry 244
- Figure M.12 – Corner flaw at hole geometry 246
- Figure M.13 – Through-thickness flaw in cylinder oriented axially 250
- Figure M.14 – Internal surface flaw in cylinder oriented axially 253
- Figure M.15 – Extended internal surface flaw in cylinder oriented axially 257
- Figure M.16 – External surface flaw in cylinder oriented axially 258
- Figure M.17 – Extended axial external surface flaw in cylinder 259
- Figure M.18 – Through-thickness flaw in cylinder oriented circumferentially 261
- Figure M.19 – Internal surface flaw in cylinder oriented circumferentially 266
- Figure M.20 – Fully circumferential internal surface flaw in cylinder 268
- Figure M.21 – Fully circumferential external surface flaw in cylinder 269
- Figure M.22 – Through-thickness flaw in spherical shell 272
- Figure M.23 – Flaws in bars and bolts 273
- Figure M.24 – Fully circumferential flaw in a round bar 277
- Figure M.25 – Welded joint geometries 278
- Figure M.26 – Transverse load-carrying cruciform joint 279
- Figure N.1 – Schematic showing curve fitting of low constraint test data to obtain  $a$  and  $k$  291
- Figure N.2 – Modifications to the Option 1 failure assessment curve for various values of the material parameters,  $a$ ,  $k$ , and constraint levels,  $\beta$  ( $< 0$ ), using Equation N.23 with  $n = 3$ . For  $a = 0$  or  $\beta = 0$  the curves reduce to the Option 1 curve 293
- Figure N.3 – FEM analysis for (a) fracture initiation and (b) ductile tearing 294
- Figure O.1 – Schematic illustration of a proof test argument (following [3]) 325
- Figure C.1 – Typical warm prestress cycles 327
- Figure P.1 – Double edge cracked plate under tension 336
- Figure P.2 – Extended embedded flaw in a plate 338
- Figure P.3 – Circumferential internal and external surface flaws in thick-walled cylinders under combined tension and bending 348
- Figure P.4 – T and Y joints under a) axial load, b) in-plane and out-of-plane bending 352
- Figure P.5 – K joints under a) axial load and b) in-plane and out-of-plane bending 353
- Figure P.6 – X and DT joints under a) axial load and b) in-plane and out-of-plane bending 354
- Figure P.7 – Classification of plasticity deformation patterns for mis-matched structures, [367] 355
- Figure P.8 – Centre cracked plate under tension  $\psi = (W - a)/h$  359
- Figure P.9 – Double edge cracked plate under tension 363
- Figure P.10 – Single edge cracked plate under pure bending 367
- Figure P.11 – Fully circumferential internal flaws in thin-walled pipes/cylinders under tension 369

- Figure P.12 – Centre through-thickness flaws in clad plates under tension [372], [373] 370
- Figure P.13 – Through-thickness flaw in a clad plate with repair weld 372
- Figure Q.1 – Components of longitudinal residual stress distribution for plate butt welds and pipe axial seam welds (austenitic steel) 375
- Figure Q.2 – Components of transverse stress distribution for plate butt welds and axial seam welds (austenitic and ferritic steels) 376
- Figure Q.3 – Components of longitudinal stress distribution for pipe butt welds (ferritic and austenitic steels) 377
- Figure Q.4 – Components of transverse stress distribution for pipe butt welds (ferritic steels) 378
- Figure Q.5 – Components of longitudinal stress distribution for plate to plate t-butt welds (ferritic steels) 382
- Figure Q.6 – Components of transverse stress distribution for plate to plate t-butt welds (austenitic and ferritic steels) 384
- Figure Q.7 – Components of longitudinal stress distribution for tubular t-butt welds (ferritic steels) 385
- Figure Q.8 – Components of transverse stress distribution for tubular t-butt welds (ferritic steels) 386
- Figure Q.9 – Residual stress profile for repair welds (transverse and longitudinal) 388
- Figure Q.10 – Finite surface crack in an infinite width plate 389
- Figure Q.11 – Extended surface flaw in an infinite width plate 393
- Figure R.1 – Non-dimensional stress intensity factors for through-thickness flaws with through-wall self-balancing stress distributions 397
- Figure S.1 – General form of a creep curve defining the average and secondary creep strain rates 401
- Figure S.2 – Derivation of strain versus time curves from iso-strain curves 402
- Figure T.1 – Assessment of flaw tolerance using ECA 416
- Figure T.2 – Assessment of detected flaw 417
- Figure U.1 – Butt weld containing embedded flaw 429
- Figure U.2 – Derivation of equal quality category for a flaw 430
- Figure U.3 – Fillet weld containing a surface flaw 431
- Figure U.4 – Obtaining the required quality category 432
- Figure U.5 – Obtaining the quality category for the flaw 433

#### List of tables

- Table 1 – Symbols 5
- Table 2 – Coefficient of variation (COV) for tensile properties for ferritic steels 36
- Table 3 – Elastic modulus 36
- Table 4 – Guidance for determining whether yielding is continuous or discontinuous 39
- Table 5 – Minimum of three equivalent (MOTE) 46
- Table 6 – Values of  $k_{0,90}$  at the lower 20th percentile for the one sided tolerance limit for a normal distribution 46
- Table 7 – Limits for slag inclusions and porosity 58
- Table 8 – Procedure for assessment of known flaws 60
- Table 9 – Stress ranges used in fatigue assessments 65
- Table 10 – Recommended fatigue crack growth laws for steels in air 68
- Table 11 – Recommended fatigue crack growth laws for steels in a marine environments 69
- Table 12 – Recommended fatigue crack growth threshold,  $\Delta K_0$ , values for assessing welded joints 71
- Table 13 – Details of quality category *S-N* curves 73
- Table 14 – Minimum values of  $\Delta\sigma_j$  for assessing non planar flaws and shape imperfections 95
- Table 15 – Limits for non planar flaws in as welded steel and aluminium alloy weldments 96

Table 16 – Limits for non planar flaws in steel weldments stress relieved by PWHT	96
Table 17 – Acceptance levels for misalignment expressed in terms of stress magnification factor, $k_m$	97
Table 18 – Acceptance levels for weld toe undercut in material thicknesses from 10 mm to 40 mm	97
Table 19 – Temperature below which creep is negligible in 200,000 h	102
Table D.1 – Formulae for calculating the bending stress due to misalignment in butt joints	146
Table D.2 – Formulae for calculating the bending stress due to misalignment in cruciform joints	149
Table F.1 – Guidance on selection of assessment sites around a pipe system	154
Table F.2 – Advice on growth of surface flaws [160]	163
Table F.3 – Advice on growth of through-wall defects [160]	164
Table F.4 – Crack opening area methods for simple geometries and loading	167
Table F.5 – Summary of short wave length surface roughness values [200]	171
Table F.6 – Particulates in primary system water	176
Table K.1 – Uncertainties in Paris parameter $A$	209
Table K.2 – Uncertainties in Paris parameter $A$ for the two state model	210
Table K.3 – Target failure probability (events/year)	211
Table K.4 – Recommended partial factors for different combinations of target reliability and variability of input data based on failure on the FAD	212
Table M.1 a) – $M_1$ for axial through-thickness in cylinders: membrane loading	251
Table M.1 b) – $M_2$ for axial through-thickness flaws in cylinders: membrane loading	252
Table M.1 c) – $M_3$ for axial through-thickness flaws in cylinders: bending loading	253
Table M.1 d) – $M_4$ for axial through-thickness flaws in cylinders: bending loading	254
Table M.2 – $M_m$ and $M_b$ for axial internal surface flaw in cylinder	256
Table M.3 – $M_m$ and $M_b$ for extended axial internal surface flaw in cylinder	257
Table M.4 – $M_m$ and $M_b$ for axial external surface flaw in cylinder	258
Table M.5 – $M_m$ and $M_b$ for extended axial external surface flaw in cylinder	259
Table M.6a) – $M_1$ for circumferential through-thickness flaws in cylinders: membrane loading	262
Table M.6b) – $M_2$ for circumferential through-thickness flaws in cylinders: membrane loading	263
Table M.6c) – $M_3$ for circumferential through-thickness flaws in cylinders: bending loading	264
Table M.6d) – $M_4$ for circumferential through-thickness flaws in cylinders: bending loading	265
Table M.7 – $M_m$ and $M_b$ for circumferential internal surface flaw in cylinder	267
Table M.8 – $M_m$ and $M_b$ for extended circumferential internal surface flaw in cylindrical shell	268
Table M.9 – Influence coefficients at points A and B for an equatorial through-thickness flaw in a sphere	270
Table M.10 – $M_m$ for semi-elliptical surface flaw in round bars	274
Table M.11 – $M_b$ for semi-elliptical surface flaw in round bars	274
Table M.12 – Values of $v$ and $w$ for axial and bending loading	279
Table N.1 – Polynomial coefficients defining $\beta_T$ for CCT [326 to 328]	296
Table N.2 – Polynomial coefficients defining $\beta_T$ for CCBT	296
Table N.3 – Polynomial coefficients defining $\beta_T$ for DECT [311], [326], [328]	297
Table N.4 – Polynomial coefficients defining $\beta_T$ for SECT	297
Table N.5 – Polynomial coefficients defining $\beta_T$ for SEB [311, 326, 328]	298
Table N.6 – Polynomial coefficients defining $\beta_T$ for 3PB	298
Table N.7 – Polynomial coefficients defining $\beta_T$ for SCT [329]	299
Table N.8 – Polynomial coefficients defining $\beta_T$ for SCB [329]	300

Table N.9 – Polynomial coefficients defining $\beta_T$ for CISLCCT [326], [330]	301
Table N.10 – Polynomial coefficients defining $\beta_T$ for CISSCCBT [331]	302
Table N.11 – Polynomial coefficients defining $\beta_T$ for CISSCCT [331]	303
Table N.12 – $a$ and $k$ defined with respect to $T/\sigma_Y$ for $N = 5$	305
Table N.13 – $a$ and $k$ defined with respect to $T/\sigma_Y$ for $N = 6$	306
Table N.14 – $a$ and $k$ defined with respect to $T/\sigma_Y$ for $N = 7$	306
Table N.15 – $a$ and $k$ defined with respect to $T/\sigma_Y$ for $N = 8$	307
Table N.16 – $a$ and $k$ defined with respect to $T/\sigma_Y$ for $N = 9$	307
Table N.17 – $a$ and $k$ defined with respect to $T/\sigma_Y$ for $N = 10$	308
Table N.18 – $a$ and $k$ defined with respect to $T/\sigma_Y$ for $N = 11$	308
Table N.19 – $a$ and $k$ defined with respect to $T/\sigma_Y$ for $N = 12$	309
Table N.20 – $a$ and $k$ defined with respect to $T/\sigma_Y$ for $N = 13$	309
Table N.21 – $a$ and $k$ defined with respect to $T/\sigma_Y$ for $N = 14$	310
Table N.22 – $a$ and $k$ defined with respect to $T/\sigma_Y$ for $N = 15$	310
Table N.23 – $a$ and $k$ defined with respect to $T/\sigma_Y$ for $N = 16$	311
Table N.24 – $a$ and $k$ defined with respect to $T/\sigma_Y$ for $N = 17$	311
Table N.25 – $a$ and $k$ defined with respect to $T/\sigma_Y$ for $N = 18$	312
Table N.26 – $a$ and $k$ defined with respect to $T/\sigma_Y$ for $N = 19$	312
Table N.27 – $a$ and $k$ defined with respect to $T/\sigma_Y$ for $N = 20$	312
Table N.28 – $a$ and $k$ defined with respect to $Q$ for $N = 5$	314
Table N.29 – $a$ and $k$ defined with respect to $Q$ for $N = 6$	315
Table N.30 – $a$ and $k$ defined with respect to $Q$ for $N = 7$	315
Table N.31 – $a$ and $k$ defined with respect to $Q$ for $N = 8$	316
Table N.32 – $a$ and $k$ defined with respect to $Q$ for $N = 9$	316
Table N.33 – $a$ and $k$ defined with respect to $Q$ for $N = 10$	317
Table N.34 – $a$ and $k$ defined with respect to $Q$ for $N = 11$	317
Table N.35 – $a$ and $k$ defined with respect to $Q$ for $N = 12$	318
Table N.36 – $a$ and $k$ defined with respect to $Q$ for $N = 13$	318
Table N.37 – $a$ and $k$ defined with respect to $Q$ for $N = 14$	319
Table N.38 – $a$ and $k$ defined with respect to $Q$ for $N = 15$	319
Table N.39 – $a$ and $k$ defined with respect to $Q$ for $N = 16$	320
Table N.40 – $a$ and $k$ defined with respect to $Q$ for $N = 17$	320
Table N.41 – $a$ and $k$ defined with respect to $Q$ for $N = 18$	321
Table N.42 – $a$ and $k$ defined with respect to $Q$ for $N = 19$	321
Table N.43 – $a$ and $k$ defined with respect to $Q$ for $N = 20$	322
Table P.1 – Calculation of bending stresses as functions of moments	332
Table P.2 – Values of $\chi$ for bending loading	349
Table P.3 – Coefficient $Q_u$ for various joint design classifications	351
Table Q.0 – Validity ranges for as-welded residual stress distributions in ferritic steels	373
Table Q.1 – Components of longitudinal stress and $K_{sb}^{\max}$ for plate butt welds and pipe axial seam welds (austenitic steel)	375
Table Q.2 – Components of transverse stress and $K_{sb}^{\max}$ for plate butt welds and axial seam welds (austenitic and ferritic steels)	376
Table Q.3 – Components of longitudinal stress and $K_{sb}^{\max}$ for pipe butt welds (ferritic and austenitic steels)	377
Table Q.4 – Components of transverse stress and $K_{sb}^{\max}$ for pipe butt welds (ferritic steel)	381
Table Q.5 – Components of transverse stresses and $K_{sb}^{\max}$ for pipe butt welds (austenitic steel)	381
Table Q.6 – Components of longitudinal stress and $K_{sb}^{\max}$ for plate to plate T-butt welds (ferritic steels)	383
Table Q.7 – Components of transverse stress and $K_{sb}^{\max}$ for plate to plate T-butt welds (ferritic and austenitic steels) and longitudinal stress and $K_{sb}^{\max}$ for plate to plate T-butt welds (austenitic steels)	384
Table Q.8 – Components of longitudinal stress and $K_{sb}^{\max}$ for tubular T-butt welds (ferritic steels)	385

Table Q.9 – Components of transverse stress and $K_{sb}^{max}$ for tubular T-butt welds (ferritic steels)	387
Table Q.10 – Components of transverse and longitudinal stress distribution for repair welds (ferritic and austenitic steels)	388
Table Q.11 – Geometry functions for a finite surface flaw in an infinite width plate – deepest point of the flaw	390
Table Q.12 – Geometry functions for a finite surface flaw in an infinite width plate – intersection of flaw with free surface	391
Table Q.13 – Geometry functions for an extended surface flaw in an infinite width plate	393
Table S.1 – Mean uniaxial creep properties for different steels for short (<10 000 h) and long term tests	403
Table S.2 – Constants used to derive creep crack growth rates in mm/h and C* in MPamh <sup>-1</sup>	405
Table T.2 – Examples of inspection capabilities for back surface flaws	417
Table T.3 – Examples of inspection capabilities for flaws at the accessible surface	420
Table T.4 – Capabilities for detection and length measurement of surface-breaking flaws by MPI ([416])	425
Table T.5 – Flaw detection capability for liquid penetrant testing [444, 445]	426

#### Summary of pages

This document comprises a front cover, an inside front cover, pages i to x, pages 1 to 466, an inside back cover and a back cover.

## Foreword

This British Standard is published by BSI Standards Limited, under licence from The British Standards Institution, and came into effect on 31 December 2013. It was prepared by Technical Committee WEE/37 *Acceptance levels for flaws in welds*. A list of organizations represented on this committee can be obtained on request to its secretary.

### Supersession

This British Standard supersedes BS 7910:2005 (incorporating Amendment No.1), which is withdrawn.

### Information about this document

This is a full revision of the standard, and introduces the following principal changes that reflect advances in structural integrity technology, in particular elements of the European FITNET procedure [1] and [2] and the UK nuclear industry's R6 procedure [3].

- In Clause 7 the fracture assessment "Levels" 1-3 have been replaced by "Options" 1-3 and the definitions changed substantially so that the new hierarchy of Options is in line with that used in the R6 procedure. The Level I fracture assessment procedure and the simplified implementation thereof (given in Annex N of BS 7910:2005) have been deleted.
- Annex S of BS 7910:2005 on appropriate numerical integration techniques for fatigue life estimation has been deleted.
- Annex U of BS 7910:2005, which gave worked examples to demonstrate high temperature assessment, has been deleted.
- Crack driving force is expressed in terms of  $K_I$  only. The materials toughness,  $K_{mat}$ , can be derived from  $K_{IC}$ , CTOD or  $J$ -integral or Charpy test data.
- A procedure for incorporating weld strength mis-match has been included in Annex I for selected geometries.
- A procedure for incorporating crack tip constraint effects has been included in Annex N.
- New rules for flaw interaction criteria have been introduced in Clause 7.
- Clause 9 and Clause 10 have been rewritten to take into account new sources of information on environmental fatigue crack growth, creep crack growth and environmentally assisted cracking (EAC).
- Annex P now includes reference stress solutions and limit load solutions for both homogeneous and strength mis-matched structures.
- A new informative annex on the reliability of various non-destructive testing (NDT) techniques has been added as Annex T.
- Annex Q has been rewritten to facilitate the use of non-linear stress distributions for residual stress fields.
- The corrosion assessment annex (Annex G) has been renamed *Assessment of locally thinned areas (LTAs)* and substantially expanded to cover geometries other than straight pipes, e.g. elbows and spheres.

### Use of this document

It has been assumed in the preparation of this British Standard that the execution of its provisions will be entrusted to appropriately qualified and experienced people, for whose use it has been produced.

As a guide this British Standard takes the form of guidance and recommendations. It should not be quoted as if it were a specification or a code of practice and claims of compliance cannot be made to it.

**Presentational conventions**

The guidance in this standard is presented in roman (i.e. upright) type. Any recommendations are expressed in sentences in which the principal auxiliary verb is “should”.

*Commentary, explanation and general informative material is presented in smaller italic type, and does not constitute a normative element.*

**Contractual and legal considerations**

This publication does not purport to include all the necessary provisions of a contract. Users are responsible for its correct application.

**Compliance with a British Standard cannot confer immunity from legal obligations.**



## Introduction

Where it is necessary to examine critically the integrity of new or existing structures by the use of non-destructive testing (NDT) methods, acceptance levels are required for any flaws that might be revealed. These often already exist as quality control levels (for example in a construction code); however, in this British Standard the derivation of acceptance levels for flaws is based upon the principle of fitness-for-service.

By this principle a structure is considered to be adequate for its purpose, provided the conditions to cause failure are not reached. A distinction has to be made between acceptance based on quality control and acceptance based on fitness-for-service.

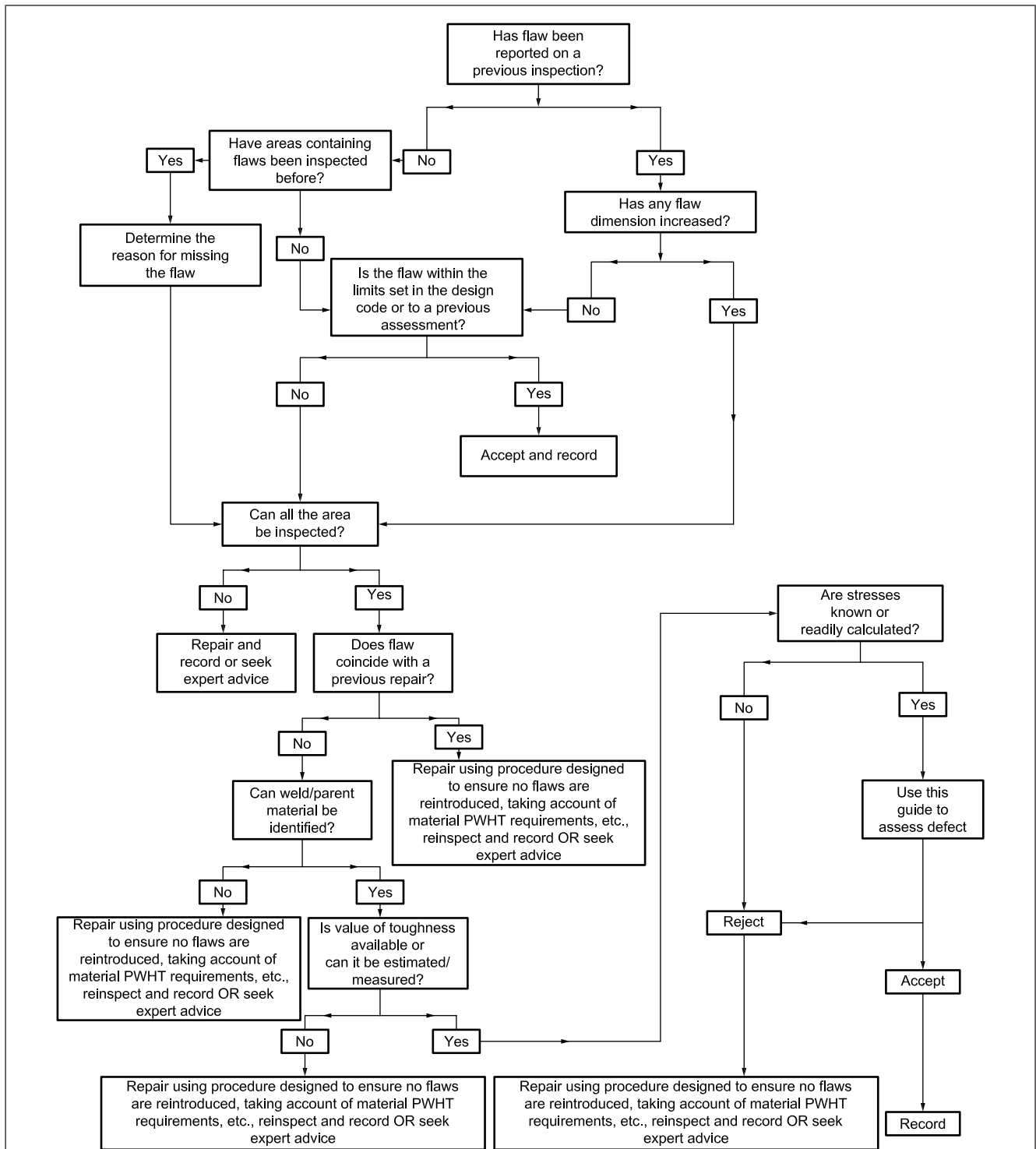
Quality control levels are usually both arbitrary and conservative, but are of considerable value in the monitoring and maintenance of quality during production. Flaws that are less severe than such quality control levels as given, for example, in current construction codes, are acceptable without further consideration. If flaws are more severe than the quality control levels, rejection is not necessarily automatic. Decisions on whether rejection, down rating and/or repairs are required may be based on fitness-for-service, either in the light of previously documented experience with similar material, stress and environmental combinations or on the basis of an engineering critical assessment (ECA) (see Figure 1). It is with the latter that this document is concerned. It is emphasized, however, that a proliferation of flaws, even if shown to be acceptable by an ECA, is regarded as indicating that quality is in need of improvement. The use of an ECA is not intended to be viewed as an alternative to good workmanship. The response to flaws not conforming to workmanship criteria needs to be the correction of the fault in the process causing the non-conformance. The methods covered by this British Standard are complementary to, and not a replacement for, good quality workmanship.

A procedure for an ECA is described throughout whereby the significance of flaws under a particular set of circumstances can be determined. All parties need to agree to its use.

It is impossible to provide a single list of flaws that are known not to cause premature failure as a large number of variables are involved as enumerated in this British Standard. Where relevant experience and data already exist it is possible to dispense with the full ECA procedure and to use authenticated previous assessments as a basis for the establishment of acceptability limits. An ECA may also be used as a basis for deferring necessary repairs to a time mutually agreeable to the contracting parties. Unsatisfactory repair of innocuous flaws can result in the substitution of more harmful and/or less readily detectable flaws.

Flaw assessment on a fitness-for-service basis requires thorough examination by NDT using techniques capable of locating and sizing flaws in critical areas. This British Standard may be used to identify such areas and to assist in optimizing the NDT procedures by identifying those aspects of flaw characterization, size and position that need to be determined. Such NDT is normally carried out after any post weld heat treatment (PWHT) and/or proof test. However, since a major objective of this British Standard is to reduce costs by eliminating unnecessary repair, careful consideration needs to be given to the level of inspection required to implement this British Standard, and to the limitations of NDT methods.

Figure 1 Example of integrity management procedure for flaws



*NOTE* If a component is rejected on the basis of a fitness-for-service analysis, downrating or retirement of the component may be considered as well as repair. Alternatively, the more advanced methods of this British Standard may be used, e.g. analyses based on leak-before-break (see Annex F) or recharacterization of flaws (see Annex E).

Where NDT has revealed the presence of flaws, the following options apply.

- If the flaws do not exceed the quality control levels in the appropriate application standard, no further action is required.
- If acceptance limits have already been established on the basis of an ECA for the appropriate combination of materials, fabrication procedure, welding consumables, stress and environmental factors, flaws need to be assessed on that basis.
- If no relevant documented experience exists, then an ECA based on the guidance given in this document needs to be carried out.

An ECA helps to identify the limiting conditions for failure or the limiting design conditions. It is emphasized that some aspects of an ECA are based on new concepts that could be subject to review.

The application of ECA principles means that “safe” results are obtained. The option of using appropriate safety factors has been incorporated or is inherent throughout the standard. If the accuracy of the input information employed (e.g. stress levels, material properties at the appropriate temperature, flaw size determination) is in question, appropriate additional safety factors need to be agreed. Equally a flaw is not necessarily unacceptable when it is found initially to exceed the acceptance levels that are derived from this standard. A further assessment may be made following the principles given in this standard incorporating more precise input data or analysis methods or by testing structurally relevant components.

This British Standard also gives guidance on the use of safety factors, reliability factors and probabilistic methods. These factors and methods do not constitute a full risk analysis of the component undergoing assessment as they do not quantify the consequences of a failure. Where failure of the structure under assessment could pose an unjustifiable or intolerable risk to the surrounding environment or population, a full risk analysis might be needed, with due recognition of both individual and societal risk [4].

The assessment methods given in this British Standard provide a quantitative measure of the acceptability of a flaw in a structure. They are not to be used in isolation but are to be used as part of an overall process for the management of flaws. The management of flaws is part of a wider integrity management plan for the structure or system. The management processes for flaws addresses factors such as:

- the cause of the flaw and remedial action to prevent further occurrences or growth;
- whether a previous inspection failed to detect this flaw. If so, the reasons for not detecting the flaw need to be determined. The inspection technique or assumptions about sub-critical crack growth rates might need to be reviewed;
- the previous history of the structure and whether it is consistent with the nature, location and size of the flaw;
- whether an inspection suggests that the flaw has grown and the observed growth is consistent with assumptions about loading and sub-critical crack growth rates after allowing for uncertainty in the inspection results;
- the implications for other structures of the same or similar design and whether modifications to the structure or a change in the service conditions might be required;
- whether there is a pattern of this flaw being detected in other structures of the same design.

An example algorithm for managing the assessment of flaws is shown in Figure 1. Alternative approaches may be developed.

## 1 Scope

This British Standard gives guidance and recommendations for assessing the acceptability of flaws in all types of structures and components. Although emphasis is placed on welded fabrications in ferritic and austenitic steels and aluminium alloys, the procedures may be used for analysing flaws in structures made from other metallic materials and in non-welded components or structures. The methods described are applicable at the design, fabrication and operational phases of a structure's life.

## 2 Normative references

The following documents, in whole or in part, are normatively referenced in this document and are indispensable for its application. For dated references, only the edition cited applies. For undated references, the latest edition of the referenced document (including any amendments) applies.

ASTM E1820, *Standard test method for measurement of fracture toughness*

ASTM E1921, *Standard test method for determination of reference temperature*

BS 7448 (all parts), *Fracture mechanics toughness tests*

BS EN 583 (all parts), *Nondestructive testing – Ultrasonic examination*

BS EN 12454, *Founding – Visual examination of surface discontinuities – Steel sand castings*

BS EN 12517 (all parts), *Non-destructive testing of welds*

BS EN ISO 6892-1, *Metallic materials – Tensile testing – Part 1: Method of test at ambient temperature*

BS EN ISO 6892-2, *Metallic materials – Tensile testing – Part 2: Method of test at elevated temperature*

BS EN ISO 7539 (all parts), *Corrosion of metals and alloys – Stress corrosion testing – Preparation and use of precracked specimens for tests under constant load or constant displacement*

BS EN ISO 11666, *Non-destructive testing of welds – Ultrasonic testing – Acceptance levels*

BS EN ISO 12737, *Metallic materials – Determination of plane-strain fracture toughness*

BS EN ISO 15548 (all parts), *Non-destructive testing – Equipment for eddy current examination*

BS EN ISO 15549, *Non-destructive testing – Eddy current testing*

BS EN 17640, *Non-destructive testing of welds – Ultrasonic testing – Techniques, testing levels, and assessment*

BS EN ISO 15653, *Metallic materials – Method of test for the determination of quasistatic fracture toughness of weld*

BS EN ISO 17636-1, *Non-destructive testing of welds – Radiographic testing – Part 1: X- and gamma-ray techniques with film*

BS EN ISO 17636-2, *Non-destructive testing of welds – Radiographic testing – Part 2: X- and gamma-ray techniques with digital detectors*

BS EN ISO 17637, *Non-destructive testing of welds – Visual testing of fusion-welded joints*

BS EN ISO 17638, *Non-destructive testing of welds – Magnetic particle testing*