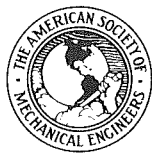


ASME BOILER AND PRESSURE VESSEL CODE
AN AMERICAN NATIONAL STANDARD

SECTION X
Fiberglass-Reinforced Plastic
Pressure Vessels

1986 EDITION

JULY 1, 1986



ASME BOILER AND PRESSURE VESSEL COMMITTEE
SUBCOMMITTEE ON REINFORCED PLASTIC PRESSURE VESSELS

THE AMERICAN SOCIETY OF MECHANICAL ENGINEERS
United Engineering Center 345 East 47th Street New York, N.Y. 10017

Date of Issue — July 1, 1986
(Includes all Addenda dated December 1985 and earlier)

This code or standard was developed under procedures accredited as meeting the criteria for American National Standards. The Consensus Committee that approved the code or standard was balanced to assure that individuals from competent and concerned interests have had an opportunity to participate. The proposed code or standard was made available for public review and comment which provides an opportunity for additional public input from industry, academia, regulatory agencies, and the public-at-large.

ASME does not "approve," "rate," or "endorse" any item, construction, proprietary device, or activity.

ASME does not take any position with respect to the validity of any patent rights asserted in connection with any items mentioned in this document, and does not undertake to insure anyone utilizing a standard against liability for infringement of any applicable Letters Patent, nor assume any such liability. Users of a code or standard are expressly advised that determination of the validity of any such patent rights, and the risk of infringement of such rights, is entirely their own responsibility.

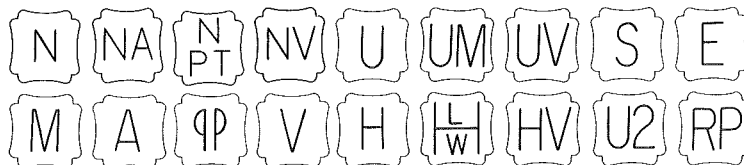
Participation by federal agency representative(s) or person(s) affiliated with industry is not to be interpreted as government or industry endorsement of this code or standard.

ASME accepts responsibility for only those interpretations issued in accordance with governing ASME procedures and policies which preclude the issuance of interpretations by individual volunteers.

The footnotes in this document are part of this American National Standard.



ASME collective membership mark



The above ASME symbols are registered in the U.S. Patent Office.
"ASME" is the trademark of the American Society of Mechanical Engineers.

Copyright © 1986 by
THE AMERICAN SOCIETY OF MECHANICAL ENGINEERS
All Rights Reserved

No part of this document may be reproduced in any form, in an electronic retrieval system or otherwise, without the prior written permission of the publisher.

Library of Congress Catalog Card Number: 56-3934
Printed in the United States of America

Adopted by the Council of the American Society of Mechanical Engineers, 1914.
Revised 1940, 1941, 1943, 1946, 1949, 1952, 1953, 1956, 1959, 1962, 1965, 1968, 1971, 1974, 1977, 1980, 1983, 1986

1986 ASME BOILER AND PRESSURE VESSEL CODE

SECTIONS

- I Power Boilers
- II Material Specifications
 - Part A — Ferrous Materials
 - Part B — Nonferrous Materials
 - Part C — Welding Rods, Electrodes and Filler Metals
- III Subsection NCA — General Requirements for Division 1 and Division 2
- III Division 1
 - Subsection NB — Class 1 Components
 - Subsection NC — Class 2 Components
 - Subsection ND — Class 3 Components
 - Subsection NE — Class MC Components
 - Subsection NF — Component Supports
 - Subsection NG — Core Support Structures
 - Appendices
- III Division 2 — Code for Concrete Reactor Vessels and Containments
- IV Heating Boilers
- V Nondestructive Examination
- VI Recommended Rules for Care and Operation of Heating Boilers
- VII Recommended Guidelines for the Care of Power Boilers
- VIII Pressure Vessels
 - Division 1
 - Division 2 — Alternative Rules
- IX Welding and Brazing Qualifications
- X Fiberglass-Reinforced Plastic Pressure Vessels
- XI Rules for Inservice Inspection of Nuclear Power Plant Components

ADDENDA

Colored-sheet Addenda, which include additions and revisions to individual Sections of the Code, are published annually and will be sent automatically to purchasers of the applicable Sections up to the publication of the 1989 Code. The 1986 Code is available only in the loose-leaf format; accordingly, the Addenda will be issued in the loose-leaf, replacement-page format.

INTERPRETATIONS

ASME issues written replies to inquiries concerning interpretation of technical aspects of the Code. The Interpretations for each individual Section will be published separately and will be included as part of the update service to that Section. They will be issued semiannually (July and December) up to the publication of the 1989 Code. Interpretations of Section III, Divisions 1 and 2, will be included with the update service to Subsection NCA. Interpretations are not part of the Code or the Addenda.

CODE CASES

The Boiler and Pressure Vessel Committee meets regularly to consider proposed additions and revisions to the Code and to formulate Cases to clarify the intent of existing requirements or provide, when the need is urgent, rules for materials or constructions not covered by existing Code rules. Those Cases which have been adopted will appear in the appropriate 1986 Code Cases book: (1) Boilers and Pressure Vessels and (2) Nuclear Components. Supplements will be sent automatically to the purchasers of the Code Cases books up to the publication of the 1989 Code.

FOREWORD

The American Society of Mechanical Engineers set up a committee in 1911 for the purpose of formulating standard rules for the construction of steam boilers and other pressure vessels. This committee is now called the Boiler and Pressure Vessel Committee.

The Committee's function is to establish rules of safety governing the design, fabrication, and inspection during construction of boilers and pressure vessels, and to interpret these rules when questions arise regarding their intent. In formulating the rules, the Committee considers the needs of users, manufacturers, and inspectors of pressure vessels. The objective of the rules is to afford reasonably certain protection of life and property and to provide a margin for deterioration in service so as to give a reasonably long, safe period of usefulness. Advancements in design and material and the evidence of experience have been recognized.

The Boiler and Pressure Vessel Committee deals with the care and inspection of boilers and pressure vessels in service only to the extent of providing suggested rules of good practice as an aid to owners and their inspectors.

The rules established by the Committee are not to be interpreted as approving, recommending, or endorsing any proprietary or specific design or as limiting in any way the manufacturer's freedom to choose any method of design or any form of construction that conforms to the Code rules.

The Boiler and Pressure Vessel Committee meets regularly to consider revisions of the rules, new rules as dictated by technological development, Code Cases, and requests for interpretations. Requests for interpretation must be addressed to the Secretary in writing and must give full particulars in order to receive consideration and a written interpretation (see Mandatory Appendix covering preparation of technical inquiries). Proposed revisions to the Code resulting from inquiries will be presented to the Main Committee for appropriate action. The action of the Main Committee becomes effective only after confirmation by letter ballot of the Committee and approval by ASME.

Proposed revisions to the Code approved by the Committee are submitted to the American National Standards Institute and published in *Mechanical Engineering* to invite comments from all interested persons. After the allotted time for public review and final approval by ASME, revisions are published annually in Addenda to the Code.

Code Cases may be used in the construction of components to be stamped with the ASME Code symbol beginning with the date of their approval by ASME.

After Code revisions are approved by ASME, they may be used beginning with the date of issuance shown on the Addenda. Revisions become mandatory as minimum requirements six months after such date of issuance, except for boilers or pressure vessels contracted for prior to the end of the six-month period.

Manufacturers and users of components are cautioned against making use of revisions and Cases that are less restrictive than former requirements without having assurance that they have been accepted by the proper authorities in the jurisdiction where the component is to be installed.

Each state and municipality in the United States and each province in the Dominion of Canada that adopts or accepts one or more Sections of the Boiler and Pressure Vessel Code is invited to appoint a representative to act on the Conference Committee to the Boiler and Pressure Vessel Committee. Since the members of the Conference Committee are in active contact with the administration and enforcement of the rules, the requirements for inspection in this Code correspond with those in effect in their respective jurisdictions. The required qualifications for an Authorized Inspector or an Authorized Nuclear Inspector under these rules may be obtained from the administrative authority of any state, municipality, or province which has adopted these rules.

The Boiler and Pressure Vessel Committee in the formulation of its rules and in the establishment of maximum design and operating pressures considers materials, construction, methods of fabrication, in-

spection, and safety devices. Permission may be granted to regulatory bodies and organizations publishing safety standards to use a complete Section of the Code by reference. If usage of a Section, such as Section IX, involves exceptions, omissions, or changes in provisions, the intent of the Code might not be attained.

Where a state or other regulatory body, in the printing of any Section of the Boiler and Pressure Vessel Code, makes additions or omissions, it is recommended that such changes be clearly indicated.

The National Board of Boiler and Pressure Vessel Inspectors is composed of chief inspectors of states and municipalities in the United States and of provinces in the Dominion of Canada that have adopted the Boiler and Pressure Vessel Code. This Board, since its organization in 1919, has functioned to uniformly administer and enforce the rules of the Boiler and Pressure Vessel Code. The cooperation of that organization with the Boiler and Pressure Vessel Committee has been extremely helpful.

It should be pointed out that the state or municipality where the Boiler and Pressure Vessel Code has been made effective has definite jurisdiction over any particular installation. Inquiries dealing with problems of local character should be directed to the proper authority of such state or municipality. Such authority may, if there is any question or doubt as to the proper interpretation, refer the question to the Boiler and Pressure Vessel Committee.

The Specifications for base materials given in Section II, Parts A and B, are identical with or similar to those of The American Society for Testing and Materials. When reference is made in an ASME Material Specification to an ASTM Specification for which a companion ASME Specification exists, the reference shall be interpreted as applying to the ASME Material Specification. Specifications for welding materials given in Section II, Part C, are identical

with or similar to those of the American Welding Society. Not all materials included in the ASME Material Specifications in Section II have been adopted for Code use. Usage is limited to those materials and grades adopted by at least one of the other Sections of the Code for application under rules of that Section. All materials allowed by these various Sections and used for construction within the scope of their rules shall be furnished in accordance with ASME Material Specifications contained in Section II except where otherwise provided in Code Cases or in the applicable Section of the Code. Materials covered by these Specifications are acceptable for use in items covered by the Code Sections only to the degree indicated in the applicable Section. Materials for Code use should preferably be ordered, produced, and documented on this basis; however, material produced under an ASTM Specification may be used in lieu of the corresponding ASME Specification, provided the requirements of the ASTM Specification are identical (excluding editorial differences) or more stringent than the ASME Specification for the Grade, Class, or Type produced and provided that the material is confirmed as complying with the ASTM Specification. Material produced to an ASTM specification with requirements different from the requirements of the corresponding ASME Specification may also be used in accordance with the above, provided the material manufacturer or vessel manufacturer certifies with evidence acceptable to the Authorized Inspector or Authorized Nuclear Inspector that the corresponding ASME Specification requirements have been met. Material produced to an ASME or ASTM Material Specification is not limited as to country of origin.

When required by context in this Section, the singular shall be interpreted as the plural, and vice-versa; and the feminine, masculine, or neuter gender shall be treated as such other gender as appropriate.

STATEMENT OF POLICY ON THE USE OF CODE SYMBOLS AND CODE AUTHORIZATION IN ADVERTISING

ASME has established procedures to authorize qualified organizations to perform various activities in accordance with the requirements of the ASME Boiler and Pressure Vessel Code. It is the aim of the Society to provide recognition of organizations so authorized. An organization holding authorization to perform various activities in accordance with the requirements of the Code may state this capability in its advertising literature.

Organizations that are authorized to use Code Symbols for marking items or constructions which have been constructed and inspected in compliance with the ASME Boiler and Pressure Vessel Code are issued Certificates of Authorization. It is the aim of the Society to maintain the standing of the Code Symbols for the benefit of the users, the enforcement jurisdictions, and the holders of the symbols who comply with all requirements.

Based on these objectives, the following policy has been established on the usage in advertising of facsimiles of the symbols, Certificates of Authorization, and reference to Code construction. The Ameri-

can Society of Mechanical Engineers does not "approve," "certify," "rate," or "endorse" any item, construction, or activity and there shall be no statements or implications which might so indicate. An organization holding a Code Symbol and/or a Certificate of Authorization may state in advertising literature that items, constructions, or activities "are built (produced or performed) or activities conducted in accordance with the requirements of the ASME Boiler and Pressure Vessel Code," or "meet the requirements of the ASME Boiler and Pressure Vessel Code."

The ASME Symbol shall be used only for stamping and nameplates as specifically provided in the Code. However, facsimiles may be used for the purpose of fostering the use of such construction. Such usage may be by an association or a society, or by a holder of a Code Symbol who may also use the facsimile in advertising to show that clearly specified items will carry the symbol. General usage is permitted only when all of a manufacturer's items are constructed under the rules.

STATEMENT OF POLICY ON THE USE OF ASME MARKING TO IDENTIFY MANUFACTURED ITEMS

The ASME Boiler and Pressure Vessel Code provides rules for the construction of boilers, pressure vessels, and nuclear components. This includes requirements for materials, design, fabrication, examination, inspection, and stamping. Items constructed in accordance with all of the applicable rules of the Code are identified with the official Code Symbol Stamp described in the governing Section of the Code.

Markings such as "ASME," "ASME Standard," or any other marking including "ASME" or the various Code Symbols shall not be used on any item which is

not constructed in accordance with all of the applicable requirements of the Code.

Items shall not be described on ASME Data Report Forms nor on similar forms referring to ASME which tend to imply that all Code requirements have been met when, in fact, they have not been. Data Report Forms covering items not fully complying with ASME requirements should not refer to ASME or they should clearly identify all exceptions to the ASME requirements.

PERSONNEL

ASME Boiler and Pressure Vessel Committee Subcommittees, Subgroups, and Working Groups

As of December 31, 1985

MAIN COMMITTEE

W. R. Mikesell, <i>Chairman</i>	J. R. Farr
E. J. Hemzy, <i>Vice Chairman</i>	B. D. Hackney
G. M. Eisenberg, <i>Secretary</i>	W. C. Ham
B. W. Bace	H. L. Hime
M. D. Bernstein	M. H. Jawad
R. K. Blosch	G. G. Karcher
R. D. Bonner	E. C. Kistner, Jr.
R. J. Bosnak	J. LeCoff
M. N. Bressler	J. R. MacKay
V. W. Butler	D. J. McDonald
D. A. Canonico	F. N. Moschini
R. J. Cepluch	C. C. Neely
L. J. Chockie	T. E. Northup
H. F. Dobel	R. F. Reedy
W. D. Doty	W. R. Smith, Sr.

HONORS AND AWARDS COMMITTEE

H. F. Dobel, <i>Chairman</i>	W. L. Garvin
W. R. Smith, Sr., <i>Vice Chairman</i>	M. Gold
	R. C. Hudson
G. M. Eisenberg, <i>Secretary</i>	E. C. Kistner, Jr.
L. J. Chockie	F. N. Moschini
J. R. Farr	E. G. Nisbett
G. E. Fratcher	R. K. Sager, Jr.

EXECUTIVE COMMITTEE (MAIN COMMITTEE)

E. J. Hemzy, <i>Chairman</i>	L. J. Chockie
W. R. Mikesell, <i>Vice Chairman</i>	E. C. Kistner, Jr.
G. M. Eisenberg, <i>Secretary</i>	F. N. Moschini
R. J. Bosnak	R. F. Reedy
R. J. Cepluch	

HONORARY MEMBERS (MAIN COMMITTEE)

J. D. Andrew, Jr.	E. L. Kemmler
P. M. Brister	E. M. Kloebler
H. M. Canavan	J. E. Lattan
J. S. Clarke	C. E. Rawlins
W. E. Cooper	D. B. Weststrom
R. M. Gibson	F. S. G. Williams
R. C. Griffin	L. P. Zick
W. L. Harding	

MARINE CONFERENCE GROUP

J. Tiratto, <i>Chairman</i>	G. C. Johnson
C. F. Banks	P. J. Pluta
V. W. Bugg	

CONFERENCE COMMITTEE

R. K. Blosch — Utah (<i>Chairman</i>)	W. E. Long, Jr. — Virginia
C. H. Walters — Oregon (<i>Vice Chairman</i>)	B. M. Lovelady — Memphis and Shelby County, Tennessee
D. J. McDonald — National Board (<i>Secretary</i>)	C. C. Mann — New Orleans
H. P. Baron — Minnesota	S. M. Matthews — Texas
J. E. Brennan — Ohio	I. W. Mault — Manitoba
W. E. Brown — Kansas	H. T. McEwen — Mississippi
N. B. Burkheimer — Maryland	A. W. Meiring — Indiana
R. D. Cather — Alaska	J. P. Mickels — Nebraska
B. E. Cimino — Colorado	H. C. Mills — Kentucky
B. W. Cole — British Columbia	R. D. O'Connor — Connecticut
A. Colvin, Jr. — Washington, D.C.	H. Parker, Jr. — Nevada
Z. C. Cordero — Michigan	R. D. Reetz — North Dakota
J. T. Crosby — Arkansas	R. Rodriguez Perez — Puerto Rico
J. G. Cvar — Delaware	D. E. Ross — New Brunswick
A. W. Diamond — Newfoundland and Labrador	R. Sauve — Quebec
F. G. Dolen — New Jersey	S. Schugar — Detroit
J. J. Duffy — Wisconsin	C. A. Sjolund — Los Angeles
E. Everett — Georgia	J. L. Smith — Alberta
R. F. Frodl — Washington	M. L. Snow, Jr. — Tennessee
D. R. Gallup — Illinois	R. P. Sullivan — Maine
J. W. Greenawalt, Jr. — Oklahoma	C. W. Thompson — Louisiana
V. Harding — Hawaii	R. W. Vindich — Pennsylvania
R. D. Herman — Saskatchewan	W. A. M. West — Prince Edward Island
E. M. Hicks — New York	R. B. West — Iowa
W. J. Holmes — Chicago	G. W. Wheaton — Rhode Island
G. M. Kuetemeyer — Milwaukee	M. J. Wheel — Vermont
W. W. Larsen — Iowa	B. L. Whitley — North Carolina
J. T. Little — Arizona	H. J. Wright — Ontario
	R. A. Yeo — Nova Scotia

SUBCOMMITTEE ON POWER BOILERS (SC I)

E. C. Kistner, Jr., <i>Chairman</i>	W. L. Lowry, Jr.
J. R. MacKay, <i>Vice Chairman</i>	R. F. Manning
M. E. Sheehan, <i>Secretary</i>	D. J. McDonald
M. D. Bernstein	R. G. Presnak
D. A. Canonico	R. Sanchez P.
A. R. Faulkner	R. D. Schueler, Jr.
D. N. French	F. W. Weidner
F. R. Gerety	B. L. Whitley
O. F. Hedden	R. L. Williams
W. T. Higginbotham	L. W. Yoder
R. Leone	J. L. Aguilar, <i>Alternate</i>

Subgroup on Care of Power Boilers (SC I)

W. T. Higginbotham, <i>Chairman</i>	D. J. McDonald
C. J. Berg	J. W. McNees
H. F. Dobel	A. Plauchu
D. O. Downey	G. J. Raftis
R. R. Hess	R. Sanchez P.
C. R. Hoefs	B. L. Whitley
E. A. Holden	J. R. Zahorsky
E. C. Kistner, Jr.	

Subgroup on Piping (SC I)

R. L. Williams, <i>Chairman</i>	W. L. Lowry, Jr.
F. R. Gerety, <i>Secretary</i>	T. C. McGough
M. D. Bernstein	R. G. Presnak
A. J. Breugelmans	L. J. Sas
A. R. Faulkner	K. J. Szigety
T. E. Hansen	L. W. Yoder
R. R. Hess	

Subgroup on Fire Tube Boilers (SC I)

R. F. Manning, <i>Chairman</i>	R. G. Reid
M. A. Farrugia	L. Sanchez G.
G. L. Kasparian	B. L. Whitley
R. Leone	

Subgroup on Design (SC I)

R. D. Schueler, Jr., <i>Chairman</i>	R. Leone
M. D. Bernstein	R. F. Manning
W. R. Hankins	

Subgroup on Materials (SC I)

A. R. Faulkner, <i>Chairman</i>	C. D. Frew
S. G. Bankar	J. S. Hunter
D. A. Canonico	

Subgroup on General Requirements (SC I)

M. D. Bernstein, <i>Chairman</i>	D. J. McDonald
F. R. Gerety, <i>Secretary</i>	T. C. McGough
T. E. Hansen	R. Sanchez P.
O. F. Hedden	W. E. Somers
R. R. Hess	F. W. Weidner
R. Leone	R. L. Williams
W. L. Lowry, Jr.	L. W. Yoder

Subgroup on Fabrication and Examination (SC I)

O. F. Hedden, <i>Chairman</i>	J. Hainsworth
S. G. Bankar	W. T. Higginbotham
D. N. French	R. D. Schueler, Jr.
J. W. Gibson	

SUBCOMMITTEE ON MATERIALS SPECIFICATIONS (SC II)

V. W. Butler, <i>Chairman</i>	R. A. Moen
W. C. Banks, <i>Vice Chairman</i>	E. G. Nisbett
J. P. Millman, <i>Secretary</i>	C. J. Parmentier
R. M. Brown	D. L. Shira
A. Cohen	R. W. Swayne
M. Gold	W. R. Sylvester
G. C. Hsu	J. W. Tackett
E. T. Ishizaka	E. O. Woolridge
E. I. Landerman	A. W. Zeuthen
A. S. Melilli	

Subgroup on Steel Plates (SC II)

A. W. Zeuthen, <i>Chairman</i>	A. S. Melilli
R. M. Brown	P. R. Slimmon
D. D. Carpenter	J. M. Tanzosh
W. D. Edsall	E. O. Woolridge
J. F. Longenecker	

Subgroup on Steel Tubular Products (SC II)

W. R. Sylvester, <i>Chairman</i>	E. J. Rozic, Jr.
E. A. Jonas	R. H. Zong
R. P. Meineke	

Subgroup on Steel Castings, Forgings, and Boltings (SC II)

E. G. Nisbett, <i>Chairman</i>	J. S. Orlando
W. C. Banks	C. J. Parmentier
R. F. Cappelini	W. L. Powell
B. M. Dingman	H. C. Templeton
E. I. Landerman	E. O. Woolridge
A. S. Melilli	

Subgroup on Nonferrous Alloys (SC II)

G. C. Hsu, *Chairman* A. P. Seidler
J. W. Tackett, *Secretary* R. T. Webster
A. Cohen M. J. Weiss

SUBCOMMITTEE ON NUCLEAR POWER (SC III)

R. F. Reedy, *Chairman* E. J. Hemzy
E. F. Gerwin, *Vice Chairman* F. P. Hill, Jr.
K. Ennis, *Secretary* R. E. Jagger
J. R. Barbee W. G. Knecht
R. J. Bosnak D. F. Landers
E. B. Branch J. Lang
M. N. Bressler W. N. McLean
F. W. Catudal C. A. Moore
L. J. Chockie F. N. Moschini
J. B. Christofferson T. E. Northup
R. L. Dick W. R. Smith, Sr.
H. F. Dobel M. L. Snow, Jr.
W. D. Doty S. W. Tagart, Jr.
F. R. Drahos

Special Working Group on Containment Systems for Nuclear Spent Fuel and High Level Waste Transport Packagings (SC III)

K. Goldmann, *Chairman* C. R. Johnson
R. Sanacore, *Secretary* R. H. Jones
W. H. Brinkman J. J. McLellan
D. A. Canonico F. N. Moschini
R. J. Claverie R. E. Nickell
D. M. Dawson W. H. Rogers, Jr.
J. A. Gatley C. H. Walters
R. T. Haelsig W. E. Wowak

Subgroup on General Requirements (SC III & 3C)

F. W. Brady, *Co-Chairman* R. D. Kulchak
H. F. Dobel, *Co-Chairman* M. J. Meyer
J. R. Barbee J. L. Milhoan
R. B. Bremmer F. N. Moschini
F. W. Catudal R. E. Muise
E. F. Gerwin M. L. Snow, Jr.
W. S. Gibbons, Jr. G. M. Tolson
R. E. Jagger

Working Group on Quality Assurance (SG-GR) (SC III & 3C)

W. S. Gibbons, Jr., *Co-Chairman* J. D. Lenardson
R. D. Kulchak, *Co-Chairman* M. Malloy
R. C. Arthurs M. J. Meyer
J. N. Babcock, Jr. R. E. Muise
J. R. Barbee G. C. Pratt
J. V. Bosco A. Smith, Jr.
R. B. Bremmer S. A. Sparacino
B. W. Burak J. F. Strunk
J. G. Harkness M. F. Sullivan
G. M. Tolson

Working Group on Duties and Responsibilities (SG-GR) (SC III & 3C)

J. E. Ayotte A. S. Laurenson
E. P. Burke W. S. Little
J. E. Crowe J. R. Luke
A. C. Eberhardt J. K. Martin
M. G. Freeman J. D. McLoughlin
T. E. Hansen B. D. Rall
R. C. Howard R. T. Rose
D. R. Kulla W. K. Sowder
B. C. Larcher R. E. Weber

Working Group on Data Report Forms (SG-GR) (SC III & 3C)

R. E. Muise, *Chairman* B. W. Burak
C. W. Allison J. Polcyn
R. C. Arthurs R. Siever
J. N. Babcock, Jr. W. K. Sowder
C. F. Buckley M. F. Sullivan

Subgroup on Materials (SC III)

W. G. Knecht, *Chairman* J. F. Longenecker
W. H. Borter N. J. Mares
B. G. Carlton R. D. McKellar
F. R. Drahos W. N. McLean
F. P. Fetterolf R. A. Moen
W. D. Goins X. E. Moore
D. R. Haines D. A. Olsson
R. M. Hamschka C. J. Parmentier
E. T. Ishizaka W. J. Sperko
E. I. Landerman A. Taboada

Subgroup on Design (SC III)

C. A. Moore, *Chairman* W. N. McLean
E. B. Branch E. C. Rodabaugh
M. N. Bressler B. L. Silverblatt
W. G. Brussalis, Jr. G. C. Slagis
W. F. English, Jr. J. D. Stevenson
F. P. Hill, Jr. J. H. Wawrzeniak
D. F. Landers K. R. Wichman
E. M. Livingston

Special Working Group on Dynamic Analysis (SG-D) (SC III)

R. Wray, *Chairman* A. E. Meligi
M. K. Au-Yang B. J. Mitchel
R. D. Blevins T. M. Mulcahy
G. J. Bohm S. W. Tagart, Jr.
P.-Y. Chen J. R. Underwood
A. H. Hadjian J. Wallach
R. P. Kassawara

Special Working Group on Faulted Conditions (SG-D) (SC III)

G. J. Bohm, <i>Chairman</i>	F. Jan
P. L. Anderson	D. P. Munson
C. W. Bruny	P. R. Olson
G. Bushnell	W. Pink
W. F. English, Jr.	P. P. Raju
M. Hartzman	W. A. Von Riesemann

Working Group on Vessels (SG-D) (SC III)

C. A. Moore, <i>Chairman</i>	L. Lipkin
C. W. Bruny	A. Merend
G. D. Cooper	P. P. Raju
N. W. Edwards	R. F. Sacramo
J. F. Finn, Jr.	R. E. Tome
F. P. Hill, Jr.	A. Walsenko

Working Group on Piping (SG-D) (SC III)

G. C. Slagis, <i>Chairman</i>	M. Z. Khlafallah
E. B. Branch	D. F. Landers
K. C. Chang	S. E. Moore
G. W. Gartland	E. D. Mysinger
S. Gils	R. F. Petrokas
A. B. Glickstein	E. C. Rodabaugh
D. J. Guzy	E. O. Swain
R. W. Haupt	L. E. Wright
R. S. Hill III	M. P. Zyne

Working Group on Pumps (SG-D) (SC III)

J. H. Wawrzyniak, <i>Chairman</i>	D. R. Hyatt
R. W. Barnes	D. M. Kitch
C. S. Boster	J. C. Major
H. L. Brammer	J. R. McEwan
R. B. Camper	P. J. Nagengast
F. P. Colon	J. J. Ranft
D. L. Cummings	H. Tafarrodi
R. Dervedde	

Working Group on Valves (SG-D) (SC III)

W. N. McLean, <i>Chairman</i>	L. J. Malandra
P. H. Awtrey	J. J. McGavin
I. L. Beltz	B. J. Milleville
R. R. Brodin	H. R. Sonderegger
J. M. Cowley	J. C. Tsacoyeanes
R. J. Kiessel	R. G. Visalli
W. G. Knecht	J. R. Zahorsky
R. Koester	B. C. Zannini
B. H. Leonard, Jr.	

Working Group on Component Supports (SG-D) (SC III)

M. N. Bressler, <i>Chairman</i>	T. C. LaCroix
J. M. Benenati	R. J. Masterson
G. M. Bove	A. E. Meligi
J. T. Boyd	E. D. Mysinger
B. J. Cheek	H. Noreen, Jr.
R. D. Ciatto	C. L. Ray, Jr.
R. P. Deubler	H. K. Shaw
H. T. H. Hui	E. O. Swain
T. Karppinen	M. P. Zyne
Z. A. Kravets	

Working Group on Core Support Structures (SG-D) (SC III)

B. L. Silverblatt, <i>Chairman</i>	F. T. Grubelich
T. Vetter, Jr., <i>Secretary</i>	E. Steinkamp
W. F. English, Jr.	

Working Group on FRP Pipe (SG-D) (SC III)

L. Loziuk, <i>Chairman</i>	A. B. Glickstein
F. R. Gerety	

Subgroup on Fabrication and Examination (SC III)

F. N. Moschini, <i>Chairman</i>	E. F. Gerwin
H. A. Sepp, Jr., <i>Secretary</i>	J. E. Harris
C. W. Allison	R. W. Jackson
D. C. Bertossa	R. M. Jesse
B. G. Carlton	W. G. Knecht
J. B. Christofferson	J. Lang
F. R. Drahos	R. E. Schuessler
G. B. Georgiev	R. E. Tschirch

Subgroup on Pressure Relief (SC III)

F. W. Catudal, <i>Chairman</i>	S. F. Harrison, Jr.
R. A. Cedel	K. Ijzerman
F. C. Cherny	D. M. Pattarini
R. J. Doelling	J. B. Vance
W. D. Greenlaw	

Subgroup on Elevated Temperature Construction (SC III)

A. W. Dalcher, <i>Chairman</i>	R. I. Jetter
J. L. McLean, <i>Secretary</i>	F. B. Litton
C. C. Bigelow	R. M. Mello
W. D. Goins	R. A. Moen
R. E. Jagger	J. M. Tanzosh
M. T. Jakub	

JOINT ACI-ASME COMMITTEE ON CONCRETE COMPONENTS FOR NUCLEAR SERVICE (SC-3C)

J. P. Allen III, <i>Chairman</i>	D. Marano
T. E. Northup, <i>Vice Chairman</i>	D. P. Moore
S. D. Weinman, <i>Secretary</i>	M. J. Morris
J. F. Artuso	R. G. Oesterle
R. M. Attar	F. S. Ople, Jr.
R. A. Bradshaw, Jr.	P. Reinhardt
F. W. Brady	F. Rinaldi
T. M. Brown	E. R. Rybarski
B. A. Erler	B. B. Scott
G. L. Fisher	J. D. Stevenson
A. E. Goldman	B. K. Thornley, Jr.
D. J. Haavik	R. N. White
T. E. Johnson	M. Bender, Observer
F. W. Joyce	C. P. Siess, Observer
R. D. Kulchak	

Subgroup on Materials, Construction, and Examination (SC-3C)

R. A. Bradshaw, Jr., *Chairman* D. J. Haavik
J. P. Allen III F. W. Joyce
R. M. Attar D. Marano
S. Bhuyan D. P. Moore
G. L. Fisher

Working Group on Concrete (SG-M, C & E) (SC-3C)

D. J. Haavik, *Chairman* C. L. Grover
J. P. Allen III J. Gutierrez
J. F. Best D. Marano
S. Bhuyan G. R. Murphy
R. A. Bradshaw, Jr. E. R. Rybarski

Working Group on Reinforcing and Prestressing Systems (SG-M, C & E) (SC-3C)

D. P. Moore, *Chairman* P. Reinhardt
J. E. Barry S. K. Sen
H. Nierlich B. K. Thornley, Jr.

Working Group on Liners (SG-M, C & E) (SC-3C)

G. L. Fisher, *Chairman* L. C. Noriega
R. M. Attar

Working Group on Concrete Inspectors Qualifications (SG-M, C & E) (SC-3C)

F. W. Joyce, *Chairman* R. J. Vurpillat
J. F. Artuso R. E. Wilson
C. E. Jaycox

Subgroup on Design (SC-3C)

B. B. Scott, *Chairman* J. A. Raulinaitis
T. M. Brown F. Rinaldi
L. I. Cheng R. E. Shewmaker
J. A. Curtin K. O. Stalter
J. F. Fulton J. D. Stevenson
T. E. Johnson A. Walsler
R. A. Mattson R. N. White
R. G. Oesterle M. J. Holley, Jr., Observer
F. S. Ople, Jr.

Working Group on Testing and Protection Against Overpressure (SG-D) (SC-3C)

T. M. Brown, *Chairman* N. J. Tuholski
S. Guha-Majumdar L. F. Wallace
H. T. Hill

Subgroup on Core Support Structures (SC-3C)

A. E. Goldman, *Chairman* P. A. Stancampiano
W. Gorcholt G. T. Yahr
W. A. Nystrom

SUBCOMMITTEE ON HEATING BOILERS (SC IV)

T. H. Milton, *Chairman* W. D. Hayen
M. J. Hogan, *Secretary* G. L. Kasparian
J. E. Ayotte J. F. Miente
F. P. Barton R. I. Mullican
P. G. Daugirda E. A. Nordstrom
R. B. Duggan R. H. Weigel
G. E. Fratcher J. I. Woodworth
D. R. Gallup

Subgroup on Care and Operation of Heating Boilers (SC IV)

J. I. Woodworth, *Chairman* W. D. Hayen
F. P. Barton E. M. Hicks
W. H. Dormer, Jr. T. H. Milton
J. Giambrone R. H. Weigel

Subgroup on Water Heaters (SC IV)

G. E. Fratcher, *Chairman* K. McTague
F. P. Barton E. A. Nordstrom
W. L. Garvin K. J. Szigety
W. L. Haag E. Wenczl
G. R. Lewis

Subgroup on Cast Iron Boilers (SC IV)

D. R. Gallup, *Chairman* R. H. Weigel
W. L. Garvin J. I. Woodworth

SUBCOMMITTEE ON NONDESTRUCTIVE EXAMINATION (SC V)

J. R. MacKay, *Chairman* E. T. Hughes
R. C. Hudson, *Vice Chairman* R. M. Jesse
P. D. Stumpf, *Secretary* F. B. Kovacs
A. S. Birks S. Markowitz
J. B. Christofferson T. G. McCarty
B. H. Clark, Jr. W. C. McGaughey
L. T. Detlor E. D. Potter
W. H. Dormer, Jr. L. Rabago
F. T. Duba J. C. Spanner, Sr.
H. C. Graber R. P. Sullivan
G. W. Hembree J. P. Sunukjian
P. J. Herbert E. J. Wnek

Subgroup on General Requirements (SC V)

G. W. Hembree, *Chairman* W. H. Dormer, Jr.
W. G. Blankenship F. T. Duba
J. O. Brown R. P. Sullivan
B. H. Clark, Jr. J. P. Sunukjian

Subgroup on Radiography (SC V)

E. J. Wnek, <i>Chairman</i>	F. B. Kovacs
W. L. Bierwirth	S. Markowitz
L. T. Detlor	T. G. McCarty
B. E. Foster	C. N. Sherlock
B. C. Jersild	R. D. Wallace
C. Johnson	B. K. Warren
K. L. Kluge	

Subgroup on Ultrasonics (SC V)

P. J. Herbert, <i>Chairman</i>	R. W. McClung
W. C. Koepke, <i>Secretary</i>	W. C. McGaughey
L. J. Chockie	E. D. Potter
N. O. Cross	F. J. Sattler
V. S. Goel	J. C. Spanner, Sr.
E. T. Hughes	F. R. A. Turner
J. F. Manning	

Subgroup on Surface NDE (MT, PT, & ET) (SC V)

H. C. Graber, <i>Chairman</i>	R. M. Jesse
A. S. Birks	L. C. Ludwig
J. B. Christofferson	J. T. Schmidt
J. I. Dantzer	

Special Working Group on Acoustic Emission (SC V)

D. A. White, <i>Chairman</i>	J. M. Nieters
B. H. Clark, Jr.	E. D. Potter
N. O. Cross	J. C. Spanner, Sr.
P. H. Hutton	T. L. Swanson
J. F. Manning	

SUBCOMMITTEE ON PRESSURE VESSELS (SC VIII)

R. J. Cephuch, <i>Chairman</i>	M. H. Jawad
J. R. Farr, <i>Vice Chairman</i>	G. G. Karcher
A. J. Roby, <i>Secretary</i>	J. LeCoff
A. P. Ahrendt	E. E. Morgeneegg
R. D. Bonner	C. C. Neely
J. O. Brown	R. F. O'Neill
V. W. Butler	H. C. Oakley
J. J. Duffy	F. O. Parnkopf
R. E. Feigel	A. Selz
H. B. France	D. A. Staskelunas
G. E. Fratcher	J. J. Szigety
W. L. Garvin	J. W. Tackett
B. D. Hackney	K. K. Tam
H. L. Hime	C. M. Vogrin

Special Working Group on Heat Transfer Equipment (SC VIII)

G. G. Karcher, <i>Chairman</i>	A. Lohmeier
J. H. Kissel, <i>Vice Chairman</i>	U. R. Miller
H. A. Schmidt, Jr., <i>Secretary</i>	H. C. Rauschenplat
C. F. Andreone	A. P. Rochino
D. E. Bolt	J. E. Soehrens
G. Borushko	A. I. Soler
S. M. Caldwell	W. A. Treff
T. K. Haldas	S. Yokell

Special Working Group on High Pressure Vessels (SC VIII)

R. F. O'Neill, <i>Chairman</i>	D. P. Kendall
M. E. Sheehan, <i>Secretary</i>	G. J. Mraz
D. J. Burns	E. G. Nisbett
B. W. Cole	H. C. Rauschenplat
C. M. Elwonger	J. R. Sims, Jr.
R. G. Fasciczka	E. R. Sliwinski
R. E. Feigel	D. H. Swift
D. M. Fryer	F. W. Tatar
R. E. Jagger	D. A. Wells

Special Working Group on Stress Multipliers (SC VIII)

C. C. Neely, <i>Chairman</i>	W. L. Garvin
M. J. Hogan, <i>Secretary</i>	C. R. Good
A. P. Ahrendt	R. F. O'Neill
R. E. Feigel	A. R. Ryshavy

Subgroup on General Requirements (SC VIII)

C. C. Neely, <i>Chairman</i>	A. J. Palmer
R. E. Tillberg, <i>Secretary</i>	A. M. Smolen
A. P. Ahrendt	A. J. Spencer
D. D. Carpenter	D. A. Staskelunas
J. J. Duffy	E. A. Steen
W. L. Garvin	W. J. Stuber
B. E. Hrubala	W. E. Vogler
H. C. Oakley	

Subgroup on Materials (SC VIII)

J. W. Tackett, Jr., <i>Chairman</i>	J. Hainsworth
H. L. Hime, <i>Secretary</i>	J. D. McLoughlin
W. C. Banks	E. G. Nisbett
V. W. Butler	K. K. Tam
W. D. Doty	D. A. Wells
J. J. Gaughan	

Subgroup on Design (SC VIII)

M. H. Jawad, <i>Chairman</i>	R. W. Mikitka
R. E. Knoblock, <i>Secretary</i>	R. F. O'Neill
M. R. Bauman	A. Selz
J. R. Farr	J. W. Stokes
R. E. Gleason	K. K. Tam
J. A. Hayward	R. M. Vogel
J. L. Jacobowitz	C. M. Vogrin
G. G. Karcher	

Working Group on Noncircular Vessels (SG-D) (SC VIII)

A. Selz, *Chairman*
H. B. Peters
K. V. Shipes
A. M. Smolen
E. L. Thomas, Jr.
J. L. Urner

Subgroup on Fabrication and Inspection (SC VIII)

J. J. Szigety, *Chairman*
R. F. O'Neill, *Secretary*
G. Bibel
R. W. Boyce
J. O. Brown
S. C. Cyr
R. E. Feigel
H. B. France
M. J. Houle
J. Lang
F. O. Parnkopf
R. E. Schuessler
R. F. Wagner

Working Group on Layered Vessels (SGFI) (SC VIII)

F. O. Parnkopf, *Chairman*
A. M. Smolen, *Secretary*
S. M. Caldwell
B. W. Cole
G. E. Fratcher
J. L. Jacobowitz
R. E. Pechacek
H. C. Rauschenplat

SUBCOMMITTEE ON WELDING (SC IX)

B. D. Hackney, *Chairman*
R. K. Sager, Jr., *Vice Chairman*
P. D. Stumpf, *Secretary*
B. L. Alia
M. L. Carpenter
H. R. W. Cobb
H. R. Conaway
W. D. Doty
J. J. Duffy
P. D. Flenner
H. L. Helmbrecht
H. L. Hime
M. J. Houle
R. A. LaPointe
R. E. Lorentz, Jr.
A. H. Miller
D. K. Peetz
S. D. Reynolds, Jr.
W. K. Scattergood
G. K. Sosnin
W. J. Sperko
G. W. Spohn III
D. J. Stull
K. C. Taber
R. R. Young

Subgroup on Materials (SC IX)

R. E. Lorentz, Jr., *Chairman*
M. L. Carpenter
H. R. Conaway
R. M. Jesse
A. H. Miller
R. K. Sager, Jr.
W. J. Sperko
J. W. Tackett
R. R. Young
H. E. Zielke

Subgroup on General Requirements (SC IX)

D. K. Peetz, *Chairman*
M. V. Davis
J. J. Duffy
M. L. Goedecke
R. M. Jesse
R. P. Meineke
B. R. Newmark
A. J. Spencer
K. C. Taber
C. E. Wainwright
H. E. Zielke

Subgroup on Procedure Qualification (SC IX)

M. J. Houle, *Chairman*
B. L. Alia
H. R. W. Cobb
H. L. Helmbrecht
A. H. Miller
S. D. Reynolds, Jr.
W. J. Sperko
E. G. Thompson

Subgroup on Performance Qualification (SC IX)

M. J. Houle, *Chairman*
B. W. Cole
P. D. Flenner
R. A. LaPointe
P. P. Norris
W. K. Scattergood
G. K. Sosnin
G. W. Spohn III
D. L. Tevis

Subgroup on Brazing (SC IX)

M. L. Carpenter, *Chairman*
R. A. LaPointe
A. H. Miller

SUBCOMMITTEE ON REINFORCED PLASTIC PRESSURE VESSELS (SC X)

D. M. Bertelsman, *Chairman*
M. J. Hogan, *Secretary*
D. H. Barton
R. K. Blosch
L. C. Daniels
T. J. Fowler
S. V. Hoa
L. E. Hunt
J. A. Kidd
R. Mohan
J. A. Rolston

SUBCOMMITTEE ON NUCLEAR INSERVICE INSPECTION (SC XI)

S. H. Bush, *Chairman*
W. C. Ham, *Vice Chairman*
K. I. Baron, *Secretary*
C. W. Allison
W. F. Anderson
W. H. Bamford
H. P. Baron
R. L. Beverly
A. J. Birkle
R. E. Bullock
L. J. Chockie
D. D. Davis
E. A. DeBarba
F. T. Duba
H. L. Gotschall
F. E. Gregor
L. B. Gross
J. P. Houstrup
L. R. Katz
J. J. Lance
T. J. Mawson
R. E. Muise
T. G. Parker
G. J. Pitzl
R. L. Powers
P. C. Riccardella
R. F. Sammataro
M. E. Schuster, Jr.
R. W. Swayne
J. C. Tobin
F. A. Warner
J. F. Enrietto, *Alternate*
S. D. Weinman, *Staff Representative*

Special Working Group on Plant Life Extension (SC XI)

L. R. Katz, <i>Chairman</i>	D. L. Harrison
L. B. Gross, <i>Secretary</i>	D. R. Hostetler
T. L. Bailey	J. P. Houstrup
A. J. Birkle	P. W. Ianni
A. J. Boegel	M. E. Lapidés
L. D. Bustard	J. T. McCumber
D. D. Davis	E. A. Merrick
F. T. Duba	B. M. Morris
F. E. Gregor	D. A. Piccione

Special Working Group on Editing and Review (SC XI)

R. L. Beverly, <i>Chairman</i>	M. E. Schuster, Jr.
A. L. Bradshaw	J. E. Staffiera
R. J. Claverie	R. W. Swayne
L. B. Gross	F. A. Warner
V. H. Hight	

Subgroup on Water-Cooled Systems (SC XI)

A. J. Birkle, <i>Chairman</i>	L. R. Katz
R. L. Powers, <i>Secretary</i>	S. Lefkowitz
C. W. Allison	R. E. Legate
W. F. Anderson	J. B. Martin
A. C. Ashton	C. V. Moore
H. P. Baron	L. Sage
R. J. Claverie	M. T. Strenk
D. D. Davis	R. J. Tamminga
G. A. Delp	F. Tehranchi
G. Gotch	J. H. Uhl
L. B. Gross	F. A. Warner
F. A. Hawksley	G. Wasilenko
T. C. Hinkle	

Working Group on Component Supports (SG-WCS) (SC XI)

D. D. Davis, <i>Chairman</i>	G. P. Knippel
G. L. Belew	C. N. Krishnaswamy
J. T. Boyd	G. C. Millman
R. F. Brandt	R. L. Powers
G. A. Delp	M. P. Zyne
L. N. Hartz	

Working Group on General Requirements (SG-WCS) (SC XI)

R. J. Tamminga, <i>Chairman</i>	L. B. Gross
R. J. Claverie, <i>Secretary</i>	R. H. Hansen
W. F. Anderson	C. E. Hartz
R. G. Edl	D. L. Tevis
R. E. Gimple	C. H. Walters
G. Gotch	

Working Group on Pumps and Valves (SG-WCS) (SC XI)

F. A. Hawksley, <i>Chairman</i>	G. Gotch
L. Sage, <i>Secretary</i>	C. E. Hartz
C. F. Buckley	J. C. Major
F. C. Cherny	

Working Group on Inspection of Systems and Components (SG-WCS) (SC XI)

L. Sage, <i>Chairman</i>	J. B. Martin
T. C. Hinkle, <i>Secretary</i>	R. E. Scott
A. C. Ashton	M. T. Strenk
C. R. Brader	F. Tehranchi
E. J. Brown	J. H. Uhl
F. N. Famulari	R. J. Von Osinski
T. F. Lentz	W. F. Anderson, <i>Alternate</i>

Subgroup on Gas-Cooled Systems (SC XI)

F. A. Warner, <i>Chairman</i>	F. E. Lesko
R. H. Hansen, <i>Secretary</i>	F. B. Litton
H. L. Gotschall	R. W. Peters

Subgroup on Liquid-Metal Cooled Systems (SC XI)

H. C. Jung, <i>Secretary</i>	L. J. Nemeth
W. L. Chase	G. Seed
R. Hundal	J. C. Tobin
J. Matte III	T. J. Walker

Working Group on Liquid-Metal Reactor Covers (SGLMCS) (SC XI)

W. L. Chase, <i>Chairman</i>	L. J. Nemeth
J. Matte III	G. Seed

Subgroup on Containment (SC XI)

R. F. Sammataro, <i>Chairman</i>	H. T. Hill
J. E. Staffiera, <i>Secretary</i>	T. P. Keaveney
W. J. Briggs	D. R. Pitcairn
R. E. Bullock	A. J. Spencer
F. E. Gregor	J. F. Strunk
K. S. Herring	P. W. Ward

Working Group on Concrete Pressure Components (SG-C) (SC XI)

H. T. Hill, <i>Chairman</i>	H. L. Gotschall
J. F. Fulton, <i>Secretary</i>	S. Guha-Majumdar
H. G. Ashar	C. N. Krishnaswamy
R. E. Bullock	A. M. Salley
C. A. Byrd	P. W. Ward

Subgroup on Evaluation Standards (SC XI)

W. H. Bamford, <i>Chairman</i>	T. J. Griesbach
J. P. Houstrup, <i>Secretary</i>	S. Ranganath
C. B. Buchalet	P. C. Riccardella
C. Y. Cheng	W. A. Vandersluys
R. L. Cloud	S. Yukawa
E. A. DeBarba	

**Special Working Group on Operating Plant Criteria (SG-ES)
(SC XI)**

T. J. Griesbach, <i>Chairman</i>	J. G. Merkle
W. L. Allan	A. G. Panagos
W. H. Bamford	J. S. Panesar
H. Behnke	P. C. Paris
J. M. Bloom	J. H. Phillips
C. B. Buchalet	P. N. Randall
R. C. Cipolla	S. Ranganath
W. C. Cliff	W. L. Server
E. Friedman	F. A. Simonen
R. M. Gamble	H. W. Slager
S. R. Gosselin	A. V. A. Swaroop
J. A. Hayward	L. E. Titland
J. P. Houstrup	G. M. Wilkowski
K. Ijzerman	J. E. Wilson
R. E. Johnson	K. K. Yoon
M. Kupinski	S. Yukawa
S. D. Leshnoff	

Working Group on Flaw Evaluation (SG-ES) (SC XI)

R. C. Cipolla, <i>Chairman</i>	P. C. Paris
W. H. Bamford	P. P. Raju
J. M. Bloom	S. Ranganath
C. B. Buchalet	W. L. Server
C. Y. Cheng	F. A. Simonen
N. W. Edwards	A. V. A. Swaroop
E. Friedman	G. M. Wilkowski
T. J. Griesbach	J. E. Wilson
J. P. Houstrup	K. K. Yoon
M. Kupinski	S. Yukawa
J. G. Merkle	V. A. Zilberstein
J. S. Panesar	

Subgroup on Nondestructive Examination (SC XI)

E. A. DeBarba, <i>Chairman</i>	F. J. Dodd
J. F. Cook, <i>Secretary</i>	M. R. Hum
D. C. Adamonis	J. J. Lance
F. L. Becker	C. R. Osman
R. L. Beverly	J. C. Spanner, Jr.
C. B. Cheezem	J. C. Spanner, Sr.
C. D. Cowfer	R. W. Swayne
G. J. Dau	

**Working Group on Procedure Qualification and Volumetric
Examination (SG-NDE) (SC XI)**

C. D. Cowfer, <i>Chairman</i>	O. DeMiranda
N. R. Bentley, <i>Secretary</i>	F. J. Dodd
D. C. Adamonis	M. R. Hum
F. L. Becker	J. J. Lance
C. B. Cheezem	J. C. Spanner, Jr.
W. T. Clayton	T. T. Taylor
J. F. Cook	

**Working Group on Personnel Qualification and Surface Visual
and Eddy Current Examination (SG-NDE) (SC XI)**

V. H. Hight, <i>Secretary</i>	F. A. Hawksley
G. E. Abell	C. J. Hellier
S. D. Brown	W. C. Koepke
J. E. Cavender, Jr.	C. R. Osman
F. T. Duba	J. M. Ray
L. Frank	A. L. Smith

Subgroup on Repairs and Replacements (SC XI)

T. J. Mawson, <i>Chairman</i>	S. R. Eley
M. J. Crisler, <i>Secretary</i>	J. F. Enrietto
E. T. Baker III	W. L. Garvin
D. C. Bertossa	R. D. Kerr
J. D. Boardman	G. J. Pitzl
A. D. Bunch	M. E. Schuster, Jr.
J. Derrico	J. C. Tobin
F. T. Duba	K. D. Verble

Working Group on Repairs (SC XI)

J. Derrico, <i>Chairman</i>	R. F. Hollander
D. C. Bertossa	R. D. Kerr
J. D. Boardman	D. R. Pitcairn
R. W. Boyce	R. W. Swayne
J. F. Enrietto	S. Tobey

Special Working Group on Repair by Welding (SG-RR) (SC XI)

S. Tobey, <i>Chairman</i>	R. Labott
B. G. Carlton, <i>Secretary</i>	R. A. LaPointe
D. C. Bertossa	W. E. Mayott
B. R. Crowley	R. A. Moen
M. L. Goedecke	B. R. Newmark
M. J. Houle	P. P. Norris
W. R. Johnson	D. L. Tevis
H. J. Kaplan	E. H. Williams

Working Group on Replacements (SG-RR) (SC XI)

M. J. Crisler, <i>Chairman</i>	R. E. Legate
E. T. Baker III	G. J. Pitzl
A. D. Bunch	M. E. Schuster, Jr.
S. R. Eley	A. J. Spencer
W. Kooy	R. E. Tschirch

SUBCOMMITTEE ON PROPERTIES OF METALS (SC-P)

D. A. Canonico, <i>Chairman</i>	E. T. Ishizaka
J. P. Millman, <i>Secretary</i>	R. H. Moeller
A. P. Ahrendt	R. A. Moen
H. T. Corten	W. J. O'Donnell
T. M. Cullen	A. J. Palmer
W. D. Doty	B. W. Roberts
A. R. Faulkner	D. I. Roberts
M. Gold	C. E. Spaeder
D. G. Harman	J. W. Tackett
S. O. Hilton	R. T. Webster

Subgroup on Strength, Ferrous Alloys (SC-P)

M. Gold, <i>Chairman</i>	E. T. Ishizaka
A. P. Ahrendt	J. F. Longenecker
V. W. Butler	R. A. Moen
D. A. Canonico	B. W. Roberts
T. M. Cullen	D. I. Roberts
R. J. Diletto	C. E. Spaeder
W. C. Hagel	G. M. Supko
S. O. Hilton	

Subgroup on Strength, Nonferrous Alloys (SC-P)

D. G. Harman, <i>Chairman</i>	R. A. Rosenberg
J. W. Barr	E. Shapiro
T. H. Bassford	J. W. Tackett
G. A. Knapp	R. T. Webster

**Subgroup on Strength of Weldments (SC-P) & (SC IX)
(Joint Subgroup)**

W. D. Doty, <i>Chairman</i>	B. W. Roberts
H. R. W. Cobb	D. I. Roberts
D. P. Edmonds	R. K. Sager, Jr.
E. T. Ishizaka	C. E. Spaeder

Subgroup on Toughness (SC-P)

H. T. Corten, <i>Chairman</i>	R. K. Nanstad
D. J. Ayres	E. G. Nisbett
J. M. Barsom	A. Selz
R. M. Brown	I. Sprung
R. F. Cappelini	R. D. Stout
W. Hanzalek	M. F. Wheatcroft
W. S. Hazelton	S. Yukawa
E. I. Landerman	R. Zawierucha
F. J. Loss	

Working Group on Non-nuclear Application (SG-T) (SC-P)

A. Selz, <i>Chairman</i>	M. F. Wheatcroft
E. G. Nisbett	R. Zawierucha
R. D. Stout	

Working Group on Nuclear Application (SG-T) (SC-P)

E. I. Landerman, <i>Chairman</i>	F. J. Loss
R. F. Cappelini	A. Selz
W. S. Hazelton	

Working Group on Toughness Criteria (SG-T) (SC-P)

H. T. Corten, <i>Chairman</i>	R. K. Nanstad
D. J. Ayres	S. Yukawa
J. M. Barsom	

SUBCOMMITTEE ON SAFETY VALVE REQUIREMENTS (SC-SV)

E. C. Kistner, Jr., <i>Chairman</i>	R. J. Doelling
W. L. Garvin, <i>Vice Chairman</i>	W. D. Greenlaw
J. S. Brzuszkiewicz, <i>Secretary</i>	H. I. Gregg
G. C. Batz	S. F. Harrison, Jr.
M. D. Bernstein	F. J. Howes
R. K. Blosch	T. L. Hughes
J. Cahoon, Jr.	M. A. Robinson
R. A. Cedel	A. J. Schmidt
O. J. Cox, Jr.	A. J. Spencer
E. C. Cullie	S. M. Sullivan
V. M. DeLuca	K. J. Szigety

Subgroup on General Requirements (SC-SV)

M. D. Bernstein, <i>Chairman</i>	T. L. Hughes
F. J. Howes	M. A. Robinson

Subgroup on Testing (SC-SV)

O. J. Cox, Jr., <i>Chairman</i>	S. F. Harrison, Jr.
E. C. Cullie	K. J. Szigety
V. M. DeLuca	

Subgroup on Design (SC-SV)

W. D. Greenlaw, <i>Chairman</i>	J. Cahoon, Jr.
G. C. Batz	H. I. Gregg
R. K. Blosch	A. J. Schmidt

SUBCOMMITTEE ON DESIGN (SC-D)

J. R. Farr, <i>Chairman</i>	E. E. Morgeneegg
R. I. Jetter, <i>Vice Chairman</i>	W. J. O'Donnell
M. J. Hogan, <i>Secretary</i>	S. S. Palusamy
O. F. Hedden	R. D. Schueler, Jr.
M. H. Jawad	M. P. Schwartz
C. A. Moore	

Subgroup on Openings (SC-D)

M. P. Schwartz, <i>Chairman</i>	P. P. Raju
S. C. Lou, <i>Secretary</i>	E. C. Rodabaugh
F. C. Adamek	H. H. Schneider
M. N. Bressler	R. W. Schneider
R. E. Gleason	H. K. Shaw
R. W. Mikitka	D. L. Shira
K. C. Morrison	

Subgroup on Design Analysis (SC-D)

S. S. Palusamy, <i>Chairman</i>	J. L. Hechmer
T. K. Burr, <i>Secretary</i>	A. Lohmeier
R. S. Barsoum	E. R. Sliwinski
A. G. Eggers	R. J. Thomas
H. M. Fishman	

Working Group on Shells (SG-DA) (SC-D)

H. M. Fishman, <i>Chairman</i>	R. W. Loomis
R. S. Barsoum	R. Raghavan
C. Chen	R. J. Thomas
A. Kalnins	

Working Group on Inelastic Behavior (SG-DA) (SC-D)

A. G. Eggers, <i>Chairman</i>	T.-H. Liu
S. Chattopadhyay	T. V. Narayanan
H.-T. Huang	E. L. Thomas, Jr.

Working Group on Special Topics (SG-DA) (SC-D)

E. R. Sliwinski, <i>Chairman</i>	G. D. Gupta
K. S. Ahluwalia	A. Lohmeier
T. K. Burr	

Working Group on External Pressure (SC-DA) (SC-D)

W. J. Carter	E. M. Livingston
D. J. Green	H. W. Marsh
J. S. Kandola	C. D. Miller
W. J. Koves	E. E. Morgenegg

Subgroup on Elevated Temperature Design (SC-D)

R. I. Jetter, <i>Chairman</i>	W. J. O'Donnell
R. D. Campbell	D. I. Roberts
J. B. Conway	F. A. Sebring
J. M. Corum	L. K. Severud
A. W. Dalcher	A. L. Snow
J. M. Duke	J. M. Tanzosh
M. T. Jakub	B. C. Wei
C. W. Lawton	

Working Group on Creep Fatigue (SG-ETD) (SC-D)

R. D. Campbell, <i>Chairman</i>	P. J. Langford
C. R. Brinkman, <i>Secretary</i>	C. W. Lawton
J. B. Conway	S. Guha-Majumdar
J. M. Duke	R. K. Mattu
G. R. Halford	C. C. Schultz, Jr.
C. E. Jaske	L. K. Severud
J. L. Kaae	W. Veljovich

Working Group on Creep Analysis (SG-ETD) (SC-D)

W. J. O'Donnell, <i>Chairman</i>	R. I. Jetter
J. M. Corum, <i>Secretary</i>	L. C. S. Nieh
R. S. Barsoum	C. C. Schultz, Jr.
A. W. Dalcher	F. A. Sebring
J. M. Duke	L. K. Severud
D. S. Griffin	R. A. Valentin

Working Group on Materials Behavior (SG-ETD) (SC-D)

D. I. Roberts, <i>Chairman</i>	R. I. Jetter
G. E. Korth, <i>Secretary</i>	R. A. Moen
C. R. Brinkman	J. M. Tanzosh
J. B. Conway	

Subgroup on Fatigue Strength (SC-D)

W. J. O'Donnell, <i>Chairman</i>	C. E. Jaske
C. R. Brinkman	D. P. Jones
J. A. Hayward	C. W. Lawton
J. L. Hechmer	M. J. Manjoine
L. A. James	G. C. Millman

SUBCOMMITTEE ON BOILER AND PRESSURE VESSEL ACCREDITATION (SC-BPVA)

C. E. Ford, <i>Chairman</i>	J. M. Whelan
D. J. McDonald, <i>Vice Chairman</i>	Alternates:
	J. R. Farr
A. Bagner, <i>Secretary</i>	R. C. Howard
E. A. Becker	R. E. Jagger
R. A. Clemons	M. L. Snow, Jr.
J. T. Crosby	A. J. Spencer
S. C. Cyr	W. E. Vogler
H. F. Dobel	F. W. Weidner
D. M. Fischer	J. A. Werhane
P. J. Pluta	

SUBCOMMITTEE ON NUCLEAR ACCREDITATION (SC-NA)

E. J. Hemzy, <i>Chairman</i>	Alternates:
M. N. Bressler, <i>Vice Chairman</i>	J. E. Ayotte
A. Bagner, <i>Secretary</i>	R. B. Bremmer
C. W. Allison	J. T. Crosby
D. J. Carreira	J. E. Crowe
R. E. Feigel	H. F. Dobel
W. S. Gibbons, Jr.	F. R. Drahos
W. G. Knecht	D. V. Ferree
J. Lang	D. E. Groves
J. D. Lenardson	R. D. Kulchak
H. A. Manning	D. J. McDonald
G. F. McDonald, Jr.	F. L. Moreadith
E. W. Merschoff	U. Potapovs
F. N. Moschini	T. E. Quaka
R. E. Muise	G. M. Tolson
M. L. Snow, Jr.	

CONTENTS

A Detailed Contents Precedes Each Part, the Appendices, and the Forms

Foreword	v
Statements of Policy	vii
Personnel	ix
Introduction	1
Part G General Requirements	3
Part M Material Requirements	13
Part D Design Requirements	19
Part F Fabrication Requirements	37
Part Q Rules for Qualifying Designs and Procedures	51
Part R Pressure Relief Devices	59
Part T Rules Governing Testing	73
Part I Rules Governing Inspection	85
Part S Marking, Stamping, and Reports	95
Appendices	101
Forms	133
SI Units	153
Index	157

INTRODUCTION

1. The current philosophies of the present Section I (Power Boilers), Section III (Nuclear Vessels), Section IV (Heating Boilers), and Section VIII (Pressure Vessels) regarding design, fabrication, and inspection are generally based on the use of metallic materials. These basic metallic materials are produced to designated physical, chemical, and metallurgical specifications, usually by a concern other than the vessel manufacturer. The basic material is formed into shapes or parts that are joined by mechanical or welding (including brazing) processes. The design rules are for the most part based on specific stress values assigned to the basic material. General rules are provided for determining the suitability of and for controlling of the joining processes. Inspection and testing requirements are based on visual inspection during and after fabrication, nondestructive testing, and hydrostatic testing.

2. In developing rules for reinforced plastic pressure vessels it was necessary for the Committee to deviate considerably from the aforementioned philosophies, and it is the purpose of this Introduction to describe in a general way the criteria that were used in preparing Section X, Fiberglass-Reinforced Plastic Pressure Vessels.

MATERIALS

3. It is not possible to fabricate a reinforced plastic pressure vessel of a single basic material for which there is an ASTM specification. The vessel parts are made up of various basic materials, such as glass and resin, which are joined in the presence of a catalyst to create a composite material that is formed into a vessel or vessel part by a specified process. General specifications for the basic materials (glass and resin) are stated, as are minimum physical properties for the composite material (laminates) produced. Metallic materials, when used in conjunction with reinforced glass laminates, are required to meet existing applicable ASME Boiler and Pressure Vessel Code specifications.

DESIGN

General

4. Adequacy of specific designs is based on qualification tests, since criteria and formulas used in Section VIII are not necessarily applicable. This is because of the general characteristics of the composite material (laminates) and the methods employed in fabrications. The qualification tests require that the minimum burst pressure of the vessels be six¹ times the design pressure. Until more experience is obtained, the maximum design pressure is being limited to 150 psi for bag-molded, centrifugally cast, and contact-molded vessels, 1500 psi for filament-wound vessels with cut filaments, and 3000 psi for filament-wound vessels with uncut filaments (ports on axis of rotation only).

Low Modulus Characteristics

5. Fiberglass-reinforced plastic pressure vessels may have a modulus of elasticity as low as 1.0×10^6 psi compared with that of ferrous vessels which may be of the order of 30×10^6 psi. This low modulus characteristic requires careful consideration of vessel profile in order to minimize bending and avoid buckling. Spherical heads or elliptical heads with an ellipse ratio not greater than 1.5:1 are suggested.

Fatigue

6. Like metallic materials, the composite material (laminates) of fiberglass-reinforced plastic vessels, when stressed at sufficiently low levels, exhibits good fatigue life. However, its low modulus of elasticity indicates a higher strain per unit of stress than any Code-used metals. Moreover, it has little ability to deform plastically. In spite of these characteristics, data and experience accumulated over a period of 15 years

¹An exception to this six times factor is applicable to vessels per G-404 (Filament-Winding — With Uncut Filaments).