

ASME BOILER AND PRESSURE VESSEL CODE
AN AMERICAN NATIONAL STANDARD

SECTION V

Nondestructive Examination

1986 EDITION

JULY 1, 1986



ASME BOILER AND PRESSURE VESSEL COMMITTEE
SUBCOMMITTEE ON NONDESTRUCTIVE TESTING

THE AMERICAN SOCIETY OF MECHANICAL ENGINEERS
United Engineering Center 345 East 47th Street New York, N.Y. 10017

52 101GL2 4 730 XL
89

3521

Date of Issue — July 1, 1986
(Includes all Addenda dated December 1985 and earlier)

This code or standard was developed under procedures accredited as meeting the criteria for American National Standards. The Consensus Committee that approved the code or standard was balanced to assure that individuals from competent and concerned interests have had an opportunity to participate. The proposed code or standard was made available for public review and comment which provides an opportunity for additional public input from industry, academia, regulatory agencies, and the public-at-large.

ASME does not "approve," "rate," or "endorse" any item, construction, proprietary device, or activity.

ASME does not take any position with respect to the validity of any patent rights asserted in connection with any items mentioned in this document, and does not undertake to insure anyone utilizing a standard against liability for infringement of any applicable Letters Patent, nor assume any such liability. Users of a code or standard are expressly advised that determination of the validity of any such patent rights, and the risk of infringement of such rights, is entirely their own responsibility.

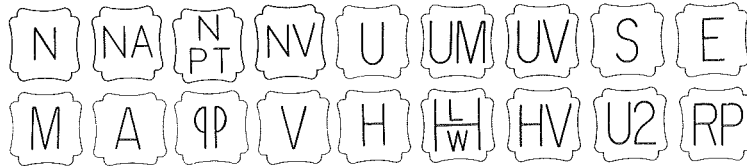
Participation by federal agency representative(s) or person(s) affiliated with industry is not to be interpreted as government or industry endorsement of this code or standard.

ASME accepts responsibility for only those interpretations issued in accordance with governing ASME procedures and policies which preclude the issuance of interpretations by individual volunteers.

The footnotes in this document are part of this American National Standard.



ASME collective membership mark



The above ASME symbols are registered in the U.S. Patent Office.
"ASME" is the trademark of the American Society of Mechanical Engineers.

Copyright © 1986 by
THE AMERICAN SOCIETY OF MECHANICAL ENGINEERS
All Rights Reserved

The Specifications published and copyrighted by The American Society for
Testing and Materials are reproduced with the Society's permission.

No part of this document may be reproduced in any form, in an electronic retrieval system or
otherwise, without the prior written permission of the publisher.

Library of Congress Catalog Card Number: 56-3934
Printed in the United States of America

Adopted by the Council of the American Society of Mechanical Engineers, 1914.
Revised 1940, 1941, 1943, 1946, 1949, 1952, 1953, 1956, 1959, 1962, 1965, 1968, 1971, 1974, 1977, 1980, 1983, 1986

1986 ASME BOILER AND PRESSURE VESSEL CODE

SECTIONS

- I Power Boilers
- II Material Specifications
 - Part A — Ferrous Materials
 - Part B — Nonferrous Materials
 - Part C — Welding Rods, Electrodes and Filler Metals
- III Subsection NCA — General Requirements for Division 1 and Division 2
- III Division 1
 - Subsection NB — Class 1 Components
 - Subsection NC — Class 2 Components
 - Subsection ND — Class 3 Components
 - Subsection NE — Class MC Components
 - Subsection NF — Component Supports
 - Subsection NG — Core Support Structures
 - Appendices
- III Division 2 — Code for Concrete Reactor Vessels and Containments
- IV Heating Boilers
- V Nondestructive Examination
- VI Recommended Rules for Care and Operation of Heating Boilers
- VII Recommended Guidelines for the Care of Power Boilers
- VIII Pressure Vessels
 - Division 1
 - Division 2 — Alternative Rules
- IX Welding and Brazing Qualifications
- X Fiberglass-Reinforced Plastic Pressure Vessels
- XI Rules for Inservice Inspection of Nuclear Power Plant Components

ADDENDA

Colored-sheet Addenda, which include additions and revisions to individual Sections of the Code, are published annually and will be sent automatically to purchasers of the applicable Sections up to the publication of the 1989 Code. The 1986 Code is available only in the loose-leaf format; accordingly, the Addenda will be issued in the loose-leaf, replacement-page format.

INTERPRETATIONS

ASME issues written replies to inquiries concerning interpretation of technical aspects of the Code. The Interpretations for each individual Section will be published separately and will be included as part of the update service to that Section. They will be issued semiannually (July and December) up to the publication of the 1989 Code. Interpretations of Section III, Divisions 1 and 2, will be included with the update service to Subsection NCA. Interpretations are not part of the Code or the Addenda.

CODE CASES

The Boiler and Pressure Vessel Committee meets regularly to consider proposed additions and revisions to the Code and to formulate Cases to clarify the intent of existing requirements or provide, when the need is urgent, rules for materials or constructions not covered by existing Code rules. Those Cases which have been adopted will appear in the appropriate 1986 Code Cases book: (1) Boilers and Pressure Vessels and (2) Nuclear Components. Supplements will be sent automatically to the purchasers of the Code Cases books up to the publication of the 1989 Code.

FOREWORD

The American Society of Mechanical Engineers set up a committee in 1911 for the purpose of formulating standard rules for the construction of steam boilers and other pressure vessels. This committee is now called the Boiler and Pressure Vessel Committee.

The Committee's function is to establish rules of safety governing the design, fabrication, and inspection during construction of boilers and pressure vessels, and to interpret these rules when questions arise regarding their intent. In formulating the rules, the Committee considers the needs of users, manufacturers, and inspectors of pressure vessels. The objective of the rules is to afford reasonably certain protection of life and property and to provide a margin for deterioration in service so as to give a reasonably long, safe period of usefulness. Advancements in design and material and the evidence of experience have been recognized.

The Boiler and Pressure Vessel Committee deals with the care and inspection of boilers and pressure vessels in service only to the extent of providing suggested rules of good practice as an aid to owners and their inspectors.

The rules established by the Committee are not to be interpreted as approving, recommending, or endorsing any proprietary or specific design or as limiting in any way the manufacturer's freedom to choose any method of design or any form of construction that conforms to the Code rules.

The Boiler and Pressure Vessel Committee meets regularly to consider revisions of the rules, new rules as dictated by technological development, Code Cases, and requests for interpretations. Requests for interpretation must be addressed to the Secretary in writing and must give full particulars in order to receive consideration and a written interpretation (see Mandatory Appendix covering preparation of technical inquiries). Proposed revisions to the Code resulting from inquiries will be presented to the Main Committee for appropriate action. The action of the Main Committee becomes effective only after confirmation by letter ballot of the Committee and approval by ASME.

Proposed revisions to the Code approved by the Committee are submitted to the American National Standards Institute and published in *Mechanical Engineering* to invite comments from all interested persons. After the allotted time for public review and final approval by ASME, revisions are published annually in Addenda to the Code.

Code Cases may be used in the construction of components to be stamped with the ASME Code symbol beginning with the date of their approval by ASME.

After Code revisions are approved by ASME, they may be used beginning with the date of issuance shown on the Addenda. Revisions become mandatory as minimum requirements six months after such date of issuance, except for boilers or pressure vessels contracted for prior to the end of the six-month period.

Manufacturers and users of components are cautioned against making use of revisions and Cases that are less restrictive than former requirements without having assurance that they have been accepted by the proper authorities in the jurisdiction where the component is to be installed.

Each state and municipality in the United States and each province in the Dominion of Canada that adopts or accepts one or more Sections of the Boiler and Pressure Vessel Code is invited to appoint a representative to act on the Conference Committee to the Boiler and Pressure Vessel Committee. Since the members of the Conference Committee are in active contact with the administration and enforcement of the rules, the requirements for inspection in this Code correspond with those in effect in their respective jurisdictions. The required qualifications for an Authorized Inspector or an Authorized Nuclear Inspector under these rules may be obtained from the administrative authority of any state, municipality, or province which has adopted these rules.

The Boiler and Pressure Vessel Committee in the formulation of its rules and in the establishment of maximum design and operating pressures considers materials, construction, methods of fabrication, in-

spection, and safety devices. Permission may be granted to regulatory bodies and organizations publishing safety standards to use a complete Section of the Code by reference. If usage of a Section, such as Section IX, involves exceptions, omissions, or changes in provisions, the intent of the Code might not be attained.

Where a state or other regulatory body, in the printing of any Section of the Boiler and Pressure Vessel Code, makes additions or omissions, it is recommended that such changes be clearly indicated.

The National Board of Boiler and Pressure Vessel Inspectors is composed of chief inspectors of states and municipalities in the United States and of provinces in the Dominion of Canada that have adopted the Boiler and Pressure Vessel Code. This Board, since its organization in 1919, has functioned to uniformly administer and enforce the rules of the Boiler and Pressure Vessel Code. The cooperation of that organization with the Boiler and Pressure Vessel Committee has been extremely helpful.

It should be pointed out that the state or municipality where the Boiler and Pressure Vessel Code has been made effective has definite jurisdiction over any particular installation. Inquiries dealing with problems of local character should be directed to the proper authority of such state or municipality. Such authority may, if there is any question or doubt as to the proper interpretation, refer the question to the Boiler and Pressure Vessel Committee.

The Specifications for base materials given in Section II, Parts A and B, are identical with or similar to those of The American Society for Testing and Materials. When reference is made in an ASME Material Specification to an ASTM Specification for which a companion ASME Specification exists, the reference shall be interpreted as applying to the ASME Material Specification. Specifications for welding materials given in Section II, Part C, are identical

with or similar to those of the American Welding Society. Not all materials included in the ASME Material Specifications in Section II have been adopted for Code use. Usage is limited to those materials and grades adopted by at least one of the other Sections of the Code for application under rules of that Section. All materials allowed by these various Sections and used for construction within the scope of their rules shall be furnished in accordance with ASME Material Specifications contained in Section II except where otherwise provided in Code Cases or in the applicable Section of the Code. Materials covered by these Specifications are acceptable for use in items covered by the Code Sections only to the degree indicated in the applicable Section. Materials for Code use should preferably be ordered, produced, and documented on this basis; however, material produced under an ASTM Specification may be used in lieu of the corresponding ASME Specification, provided the requirements of the ASTM Specification are identical (excluding editorial differences) or more stringent than the ASME Specification for the Grade, Class, or Type produced and provided that the material is confirmed as complying with the ASTM Specification. Material produced to an ASTM specification with requirements different from the requirements of the corresponding ASME Specification may also be used in accordance with the above, provided the material manufacturer or vessel manufacturer certifies with evidence acceptable to the Authorized Inspector or Authorized Nuclear Inspector that the corresponding ASME Specification requirements have been met. Material produced to an ASME or ASTM Material Specification is not limited as to country of origin.

When required by context in this Section, the singular shall be interpreted as the plural, and vice-versa; and the feminine, masculine, or neuter gender shall be treated as such other gender as appropriate.

STATEMENT OF POLICY ON THE USE OF CODE SYMBOLS AND CODE AUTHORIZATION IN ADVERTISING

ASME has established procedures to authorize qualified organizations to perform various activities in accordance with the requirements of the ASME Boiler and Pressure Vessel Code. It is the aim of the Society to provide recognition of organizations so authorized. An organization holding authorization to perform various activities in accordance with the requirements of the Code may state this capability in its advertising literature.

Organizations that are authorized to use Code Symbols for marking items or constructions which have been constructed and inspected in compliance with the ASME Boiler and Pressure Vessel Code are issued Certificates of Authorization. It is the aim of the Society to maintain the standing of the Code Symbols for the benefit of the users, the enforcement jurisdictions, and the holders of the symbols who comply with all requirements.

Based on these objectives, the following policy has been established on the usage in advertising of facsimiles of the symbols, Certificates of Authorization, and reference to Code construction. The Ameri-

can Society of Mechanical Engineers does not "approve," "certify," "rate," or "endorse" any item, construction, or activity and there shall be no statements or implications which might so indicate. An organization holding a Code Symbol and/or a Certificate of Authorization may state in advertising literature that items, constructions, or activities "are built (produced or performed) or activities conducted in accordance with the requirements of the ASME Boiler and Pressure Vessel Code," or "meet the requirements of the ASME Boiler and Pressure Vessel Code."

The ASME Symbol shall be used only for stamping and nameplates as specifically provided in the Code. However, facsimiles may be used for the purpose of fostering the use of such construction. Such usage may be by an association or a society, or by a holder of a Code Symbol who may also use the facsimile in advertising to show that clearly specified items will carry the symbol. General usage is permitted only when all of a manufacturer's items are constructed under the rules.

STATEMENT OF POLICY ON THE USE OF ASME MARKING TO IDENTIFY MANUFACTURED ITEMS

The ASME Boiler and Pressure Vessel Code provides rules for the construction of boilers, pressure vessels, and nuclear components. This includes requirements for materials, design, fabrication, examination, inspection, and stamping. Items constructed in accordance with all of the applicable rules of the Code are identified with the official Code Symbol Stamp described in the governing Section of the Code.

Markings such as "ASME," "ASME Standard," or any other marking including "ASME" or the various Code Symbols shall not be used on any item which is

not constructed in accordance with all of the applicable requirements of the Code.

Items shall not be described on ASME Data Report Forms nor on similar forms referring to ASME which tend to imply that all Code requirements have been met when, in fact, they have not been. Data Report Forms covering items not fully complying with ASME requirements should not refer to ASME or they should clearly identify all exceptions to the ASME requirements.

PERSONNEL

ASME Boiler and Pressure Vessel Committee Subcommittees, Subgroups, and Working Groups

As of December 31, 1985

MAIN COMMITTEE

W. R. Mikesell, <i>Chairman</i>	J. R. Farr
E. J. Hemzy, <i>Vice Chairman</i>	B. D. Hackney
G. M. Eisenberg, <i>Secretary</i>	W. C. Ham
B. W. Bace	H. L. Hime
M. D. Bernstein	M. H. Jawad
R. K. Blosch	G. G. Karcher
R. D. Bonner	E. C. Kistner, Jr.
R. J. Bosnak	J. LeCoff
M. N. Bressler	J. R. MacKay
V. W. Butler	D. J. McDonald
D. A. Canonico	F. N. Moschini
R. J. Cepluch	C. C. Neely
L. J. Chockie	T. E. Northup
H. F. Dobel	R. F. Reedy
W. D. Doty	W. R. Smith, Sr.

HONORS AND AWARDS COMMITTEE

H. F. Dobel, <i>Chairman</i>	W. L. Garvin
W. R. Smith, Sr., <i>Vice Chairman</i>	M. Gold
G. M. Eisenberg, <i>Secretary</i>	R. C. Hudson
L. J. Chockie	E. C. Kistner, Jr.
J. R. Farr	F. N. Moschini
G. E. Fratcher	E. G. Nisbett
	R. K. Sager, Jr.

EXECUTIVE COMMITTEE (MAIN COMMITTEE)

E. J. Hemzy, <i>Chairman</i>	L. J. Chockie
W. R. Mikesell, <i>Vice Chairman</i>	E. C. Kistner, Jr.
G. M. Eisenberg, <i>Secretary</i>	F. N. Moschini
R. J. Bosnak	R. F. Reedy
R. J. Cepluch	

HONORARY MEMBERS (MAIN COMMITTEE)

J. D. Andrew, Jr.	E. L. Kemmler
P. M. Brister	E. M. Kloebler
H. M. Canavan	J. E. Lattan
J. S. Clarke	C. E. Rawlins
W. E. Cooper	D. B. Weststrom
R. M. Gibson	F. S. G. Williams
R. C. Griffin	L. P. Zick
W. L. Harding	

MARINE CONFERENCE GROUP

J. Tiratto, <i>Chairman</i>	G. C. Johnson
C. F. Banks	P. J. Pluta
V. W. Bugg	

CONFERENCE COMMITTEE

R. K. Blosch — Utah (<i>Chairman</i>)	W. E. Long, Jr. — Virginia
C. H. Walters — Oregon (<i>Vice Chairman</i>)	B. M. Lovelady — Memphis and Shelby County, Tennessee
D. J. McDonald — National Board (<i>Secretary</i>)	C. C. Mann — New Orleans
H. P. Baron — Minnesota	S. M. Matthews — Texas
J. E. Brennan — Ohio	I. W. Mault — Manitoba
W. E. Brown — Kansas	H. T. McEwen — Mississippi
N. B. Burkheimer — Maryland	A. W. Meiring — Indiana
R. D. Cather — Alaska	J. P. Mickels — Nebraska
B. E. Cimino — Colorado	H. C. Mills — Kentucky
B. W. Cole — British Columbia	R. D. O'Connor — Connecticut
A. Colvin, Jr. — Washington, D.C.	H. Parker, Jr. — Nevada
Z. C. Cordero — Michigan	R. D. Reetz — North Dakota
J. T. Crosby — Arkansas	R. Rodriguez Perez — Puerto Rico
J. G. Cvar — Delaware	D. E. Ross — New Brunswick
A. W. Diamond — Newfoundland and Labrador	R. Sauve — Quebec
F. G. Dolen — New Jersey	S. Schugar — Detroit
J. J. Duffy — Wisconsin	C. A. Sjolund — Los Angeles
E. Everett — Georgia	J. L. Smith — Alberta
R. F. Frodl — Washington	M. L. Snow, Jr. — Tennessee
D. R. Gallup — Illinois	R. P. Sullivan — Maine
J. W. Greenawalt, Jr. — Oklahoma	C. W. Thompson — Louisiana
V. Harding — Hawaii	R. W. Vindich — Pennsylvania
R. D. Herman — Saskatchewan	W. A. M. West — Prince Edward Island
E. M. Hicks — New York	R. B. West — Iowa
W. J. Holmes — Chicago	G. W. Wheaton — Rhode Island
G. M. Kuetemeyer — Milwaukee	M. J. Wheel — Vermont
W. W. Larsen — Iowa	B. L. Whitley — North Carolina
J. T. Little — Arizona	H. J. Wright — Ontario
	R. A. Yeo — Nova Scotia

SUBCOMMITTEE ON POWER BOILERS (SC I)

E. C. Kistner, Jr., <i>Chairman</i>	W. L. Lowry, Jr.
J. R. MacKay, <i>Vice Chairman</i>	R. F. Manning
M. E. Sheehan, <i>Secretary</i>	D. J. McDonald
M. D. Bernstein	R. G. Presnak
D. A. Canonico	R. Sanchez P.
A. R. Faulkner	R. D. Schueler, Jr.
D. N. French	F. W. Weidner
F. R. Gerety	B. L. Whitley
O. F. Hedden	R. L. Williams
W. T. Higginbotham	L. W. Yoder
R. Leone	J. L. Aguilar, Alternate

Subgroup on Care of Power Boilers (SC I)

W. T. Higginbotham, <i>Chairman</i>	D. J. McDonald
C. J. Berg	J. W. McNees
H. F. Dobel	A. Plauchu
D. O. Downey	G. J. Raftis
R. R. Hess	R. Sanchez P.
C. R. Hoefs	B. L. Whitley
E. A. Holden	J. R. Zahorsky
E. C. Kistner, Jr.	

Subgroup on Piping (SC I)

R. L. Williams, <i>Chairman</i>	W. L. Lowry, Jr.
F. R. Gerety, <i>Secretary</i>	T. C. McGough
M. D. Bernstein	R. G. Presnak
A. J. Breugelmans	L. J. Sas
A. R. Faulkner	K. J. Szigety
T. E. Hansen	L. W. Yoder
R. R. Hess	

Subgroup on Fire Tube Boilers (SC I)

R. F. Manning, <i>Chairman</i>	R. G. Reid
M. A. Farrugia	L. Sanchez G.
G. L. Kasparian	B. L. Whitley
R. Leone	

Subgroup on Design (SC I)

R. D. Schueler, Jr., <i>Chairman</i>	R. Leone
M. D. Bernstein	R. F. Manning
W. R. Hankins	

Subgroup on Materials (SC I)

A. R. Faulkner, <i>Chairman</i>	C. D. Frew
S. G. Bankar	J. S. Hunter
D. A. Canonico	

Subgroup on General Requirements (SC I)

M. D. Bernstein, <i>Chairman</i>	D. J. McDonald
F. R. Gerety, <i>Secretary</i>	T. C. McGough
T. E. Hansen	R. Sanchez P.
O. F. Hedden	W. E. Somers
R. R. Hess	F. W. Weidner
R. Leone	R. L. Williams
W. L. Lowry, Jr.	L. W. Yoder

Subgroup on Fabrication and Examination (SC I)

O. F. Hedden, <i>Chairman</i>	J. Hainsworth
S. G. Bankar	W. T. Higginbotham
D. N. French	R. D. Schueler, Jr.
J. W. Gibson	

SUBCOMMITTEE ON MATERIALS SPECIFICATIONS (SC II)

V. W. Butler, <i>Chairman</i>	R. A. Moen
W. C. Banks, <i>Vice Chairman</i>	E. G. Nisbett
J. P. Millman, <i>Secretary</i>	C. J. Parmentier
R. M. Brown	D. L. Shira
A. Cohen	R. W. Swayne
M. Gold	W. R. Sylvester
G. C. Hsu	J. W. Tackett
E. T. Ishizaka	E. O. Woolridge
E. I. Landerman	A. W. Zeuthen
A. S. Melilli	

Subgroup on Steel Plates (SC II)

A. W. Zeuthen, <i>Chairman</i>	A. S. Melilli
R. M. Brown	P. R. Slimmon
D. D. Carpenter	J. M. Tanzosh
W. D. Edsall	E. O. Woolridge
J. F. Longenecker	

Subgroup on Steel Tubular Products (SC II)

W. R. Sylvester, <i>Chairman</i>	E. J. Rozic, Jr.
E. A. Jonas	R. H. Zong
R. P. Meineke	

Subgroup on Steel Castings, Forgings, and Boltings (SC II)

E. G. Nisbett, <i>Chairman</i>	J. S. Orlando
W. C. Banks	C. J. Parmentier
R. F. Cappelini	W. L. Powell
B. M. Dingman	H. C. Templeton
E. I. Landerman	E. O. Woolridge
A. S. Melilli	

Subgroup on Nonferrous Alloys (SC II)

G. C. Hsu, *Chairman*
J. W. Tackett, *Secretary*
A. Cohen

A. P. Seidler
R. T. Webster
M. J. Weiss

SUBCOMMITTEE ON NUCLEAR POWER (SC III)

R. F. Reedy, *Chairman*
E. F. Gerwin, *Vice Chairman*
K. Ennis, *Secretary*
J. R. Barbee
R. J. Bosnak
E. B. Branch
M. N. Bressler
F. W. Catudal
L. J. Chockie
J. B. Christofferson
R. L. Dick
H. F. Dobel
W. D. Doty
F. R. Drahos

E. J. Hemzy
F. P. Hill, Jr.
R. E. Jagger
W. G. Knecht
D. F. Landers
J. Lang
W. N. McLean
C. A. Moore
F. N. Moschini
T. E. Northup
W. R. Smith, Sr.
M. L. Snow, Jr.
S. W. Tagart, Jr.

Special Working Group on Containment Systems for Nuclear Spent Fuel and High Level Waste Transport Packagings (SC III)

K. Goldmann, *Chairman*
R. Sanacore, *Secretary*
W. H. Brinkman
D. A. Canonico
R. J. Claverie
D. M. Dawson
J. A. Gatley
R. T. Haelsig

C. R. Johnson
R. H. Jones
J. J. McLellan
F. N. Moschini
R. E. Nickell
W. H. Rogers, Jr.
C. H. Walters
W. E. Wowak

Subgroup on General Requirements (SC III & 3C)

F. W. Brady, *Co-Chairman*
H. F. Dobel, *Co-Chairman*
J. R. Barbee
R. B. Bremmer
F. W. Catudal
E. F. Gerwin
W. S. Gibbons, Jr.
R. E. Jagger

R. D. Kulchak
M. J. Meyer
J. L. Milhoan
F. N. Moschini
R. E. Muise
M. L. Snow, Jr.
G. M. Tolson

Working Group on Quality Assurance (SG-GR) (SC III & 3C)

W. S. Gibbons, Jr., *Co-Chairman*
R. D. Kulchak, *Co-Chairman*
R. C. Arthurs
J. N. Babcock, Jr.
J. R. Barbee
J. V. Bosco
R. B. Bremmer
B. W. Burak
J. G. Harkness

J. D. Lenardson
M. Malloy
M. J. Meyer
R. E. Muise
G. C. Pratt
A. Smith, Jr.
S. A. Sparacino
J. F. Strunk
M. F. Sullivan
G. M. Tolson

Working Group on Duties and Responsibilities (SG-GR) (SC III & 3C)

J. E. Ayotte
E. P. Burke
J. E. Crowe
A. C. Eberhardt
M. G. Freeman
T. E. Hansen
R. C. Howard
D. R. Kulla
B. C. Larcher

A. S. Laursen
W. S. Little
J. R. Luke
J. K. Martin
J. D. McLoughlin
B. D. Rall
R. T. Rose
W. K. Sowder
R. E. Weber

Working Group on Data Report Forms (SG-GR) (SC III & 3C)

R. E. Muise, *Chairman*
C. W. Allison
R. C. Arthurs
J. N. Babcock, Jr.
C. F. Buckley

B. W. Burak
J. Polcyn
R. Siever
W. K. Sowder
M. F. Sullivan

Subgroup on Materials (SC III)

W. G. Knecht, *Chairman*
W. H. Borter
B. G. Carlton
F. R. Drahos
F. P. Fetterolf
W. D. Goins
D. R. Haines
R. M. Hamschka
E. T. Ishizaka
E. I. Landerman

J. F. Longenecker
N. J. Mares
R. D. McKellar
W. N. McLean
R. A. Moen
X. E. Moore
D. A. Olsson
C. J. Parmentier
W. J. Sperko
A. Taboada

Subgroup on Design (SC III)

C. A. Moore, *Chairman*
E. B. Branch
M. N. Bressler
W. G. Brussalis, Jr.
W. F. English, Jr.
F. P. Hill, Jr.
D. F. Landers
E. M. Livingston

W. N. McLean
E. C. Rodabaugh
B. L. Silverblatt
G. C. Slagis
J. D. Stevenson
J. H. Wawrzyniak
K. R. Wichman

Special Working Group on Dynamic Analysis (SG-D) (SC III)

R. Wray, *Chairman*
M. K. Au-Yang
R. D. Blevins
G. J. Bohm
P.-Y. Chen
A. H. Hadjian
R. P. Kassawara

A. E. Meligi
B. J. Mitchel
T. M. Mulcahy
S. W. Tagart, Jr.
J. R. Underwood
J. Wallach

Special Working Group on Faulted Conditions (SG-D) (SC III)

G. J. Bohm, <i>Chairman</i>	F. Jan
P. L. Anderson	D. P. Munson
C. W. Bruny	P. R. Olson
G. Bushnell	W. Pink
W. F. English, Jr.	P. P. Raju
M. Hartzman	W. A. Von Rieseemann

Working Group on Vessels (SG-D) (SC III)

C. A. Moore, <i>Chairman</i>	L. Lipkin
C. W. Bruny	A. Merend
G. D. Cooper	P. P. Raju
N. W. Edwards	R. F. Sacramo
J. F. Finn, Jr.	R. E. Tome
F. P. Hill, Jr.	A. Walsenko

Working Group on Piping (SG-D) (SC III)

G. C. Slagis, <i>Chairman</i>	M. Z. Khlafallah
E. B. Branch	D. F. Landers
K. C. Chang	S. E. Moore
G. W. Gartland	E. D. Mysinger
S. Gils	R. F. Petrokas
A. B. Glickstein	E. C. Rodabaugh
D. J. Guzy	E. O. Swain
R. W. Haupt	L. E. Wright
R. S. Hill III	M. P. Zyne

Working Group on Pumps (SG-D) (SC III)

J. H. Wawrzeniak, <i>Chairman</i>	D. R. Hyatt
R. W. Barnes	D. M. Kitch
C. S. Boster	J. C. Major
H. L. Brammer	J. R. McEwan
R. B. Camper	P. J. Nagengast
F. P. Colon	J. J. Ranft
D. L. Cummings	H. Tafarrodi
R. Dervedde	

Working Group on Valves (SG-D) (SC III)

W. N. McLean, <i>Chairman</i>	L. J. Malandra
P. H. Awtrey	J. J. McGavin
I. L. Beltz	B. J. Milleville
R. R. Brodin	H. R. Sonderegger
J. M. Cowley	J. C. Tsacoyeanes
R. J. Kiessel	R. G. Visalli
W. G. Knecht	J. R. Zahorsky
R. Koester	B. C. Zannini
B. H. Leonard, Jr.	

Working Group on Component Supports (SG-D) (SC III)

M. N. Bressler, <i>Chairman</i>	T. C. LaCroix
J. M. Benenati	R. J. Masterson
G. M. Bove	A. E. Meligi
J. T. Boyd	E. D. Mysinger
B. J. Cheek	H. Noreen, Jr.
R. D. Ciatto	C. L. Ray, Jr.
R. P. Deubler	H. K. Shaw
H. T. H. Hui	E. O. Swain
T. Karppinen	M. P. Zyne
Z. A. Kravets	

Working Group on Core Support Structures (SG-D) (SC III)

B. L. Silverblatt, <i>Chairman</i>	F. T. Grubelich
T. Vetter, Jr., <i>Secretary</i>	E. Steinkamp
W. F. English, Jr.	

Working Group on FRP Pipe (SG-D) (SC III)

L. Loziuk, <i>Chairman</i>	A. B. Glickstein
F. R. Gerety	

Subgroup on Fabrication and Examination (SC III)

F. N. Moschini, <i>Chairman</i>	E. F. Gerwin
H. A. Sepp, Jr., <i>Secretary</i>	J. E. Harris
C. W. Allison	R. W. Jackson
D. C. Bertossa	R. M. Jesse
B. G. Carlton	W. G. Knecht
J. B. Christofferson	J. Lang
F. R. Drahos	R. E. Schuessler
G. B. Georgiev	R. E. Tschirch

Subgroup on Pressure Relief (SC III)

F. W. Catudal, <i>Chairman</i>	S. F. Harrison, Jr.
R. A. Cedel	K. Ijzerman
F. C. Cherny	D. M. Pattarini
R. J. Doelling	J. B. Vance
W. D. Greenlaw	

Subgroup on Elevated Temperature Construction (SC III)

A. W. Dalcher, <i>Chairman</i>	R. I. Jetter
J. L. McLean, <i>Secretary</i>	F. B. Litton
C. C. Bigelow	R. M. Mello
W. D. Goins	R. A. Moen
R. E. Jagger	J. M. Tanzosh
M. T. Jakub	

JOINT ACI-ASME COMMITTEE ON CONCRETE COMPONENTS FOR NUCLEAR SERVICE (SC-3C)

J. P. Allen III, <i>Chairman</i>	D. Marano
T. E. Northup, <i>Vice Chairman</i>	D. P. Moore
S. D. Weinman, <i>Secretary</i>	M. J. Morris
J. F. Artuso	R. G. Oesterle
R. M. Attar	F. S. Ople, Jr.
R. A. Bradshaw, Jr.	P. Reinhardt
F. W. Brady	F. Rinaldi
T. M. Brown	E. R. Rybarski
B. A. Erler	B. B. Scott
G. L. Fisher	J. D. Stevenson
A. E. Goldman	B. K. Thornley, Jr.
D. J. Haavik	R. N. White
T. E. Johnson	M. Bender, Observer
F. W. Joyce	C. P. Siess, Observer
R. D. Kulchak	

Subgroup on Materials, Construction, and Examination (SC-3C)

R. A. Bradshaw, Jr., <i>Chairman</i>	D. J. Haavik
J. P. Allen III	F. W. Joyce
R. M. Attar	D. Marano
S. Bhuyan	D. P. Moore
G. L. Fisher	

Working Group on Concrete (SG-M, C & E) (SC-3C)

D. J. Haavik, <i>Chairman</i>	C. L. Grover
J. P. Allen III	J. Gutierrez
J. F. Best	D. Marano
S. Bhuyan	G. R. Murphy
R. A. Bradshaw, Jr.	E. R. Rybarski

Working Group on Reinforcing and Prestressing Systems (SG-M, C & E) (SC-3C)

D. P. Moore, <i>Chairman</i>	P. Reinhardt
J. E. Barry	S. K. Sen
H. Nierlich	B. K. Thornley, Jr.

Working Group on Liners (SG-M, C & E) (SC-3C)

G. L. Fisher, <i>Chairman</i>	L. C. Noriega
R. M. Attar	

Working Group on Concrete Inspectors Qualifications (SG-M, C & E) (SC-3C)

F. W. Joyce, <i>Chairman</i>	R. J. Vurpillat
J. F. Artuso	R. E. Wilson
C. E. Jaycox	

Subgroup on Design (SC-3C)

B. B. Scott, <i>Chairman</i>	J. A. Raulinaitis
T. M. Brown	F. Rinaldi
L. I. Cheng	R. E. Shewmaker
J. A. Curtin	K. O. Stalter
J. F. Fulton	J. D. Stevenson
T. E. Johnson	A. Walser
R. A. Mattson	R. N. White
R. G. Oesterle	M. J. Holley, Jr., <i>Observer</i>
F. S. Ople, Jr.	

Working Group on Testing and Protection Against Overpressure (SG-D) (SC-3C)

T. M. Brown, <i>Chairman</i>	N. J. Tuholski
S. Guha-Majumdar	L. F. Wallace
H. T. Hill	

Subgroup on Core Support Structures (SC-3C)

A. E. Goldman, <i>Chairman</i>	P. A. Stancampiano
W. Gorcholt	G. T. Yahr
W. A. Nystrom	

SUBCOMMITTEE ON HEATING BOILERS (SC IV)

T. H. Milton, <i>Chairman</i>	W. D. Hayen
M. J. Hogan, <i>Secretary</i>	G. L. Kasparian
J. E. Ayotte	J. F. Miente
F. P. Barton	R. I. Mullican
P. G. Daugirda	E. A. Nordstrom
R. B. Duggan	R. H. Weigel
G. E. Fratcher	J. I. Woodworth
D. R. Gallup	

Subgroup on Care and Operation of Heating Boilers (SC IV)

J. I. Woodworth, <i>Chairman</i>	W. D. Hayen
F. P. Barton	E. M. Hicks
W. H. Dormer, Jr.	T. H. Milton
J. Giambrone	R. H. Weigel

Subgroup on Water Heaters (SC IV)

G. E. Fratcher, <i>Chairman</i>	K. McTague
F. P. Barton	E. A. Nordstrom
W. L. Garvin	K. J. Szigety
W. L. Haag	E. Wenzel
G. R. Lewis	

Subgroup on Cast Iron Boilers (SC IV)

D. R. Gallup, <i>Chairman</i>	R. H. Weigel
W. L. Garvin	J. I. Woodworth

SUBCOMMITTEE ON NONDESTRUCTIVE EXAMINATION (SC V)

J. R. MacKay, <i>Chairman</i>	E. T. Hughes
R. C. Hudson, <i>Vice Chairman</i>	R. M. Jesse
P. D. Stumpf, <i>Secretary</i>	F. B. Kovacs
A. S. Birks	S. Markowitz
J. B. Christofferson	T. G. McCarty
B. H. Clark, Jr.	W. C. McCaughey
L. T. Detlor	E. D. Potter
W. H. Dormer, Jr.	L. Rabago
F. T. Duba	J. C. Spanner, Sr.
H. C. Graber	R. P. Sullivan
G. W. Hembree	J. P. Sunukjian
P. J. Herbert	E. J. Wnek

Subgroup on General Requirements (SC V)

G. W. Hembree, <i>Chairman</i>	W. H. Dormer, Jr.
W. G. Blankenship	F. T. Duba
J. O. Brown	R. P. Sullivan
B. H. Clark, Jr.	J. P. Sunukjian

Subgroup on Radiography (SC V)

E. J. Wnek, <i>Chairman</i>	F. B. Kovacs
W. L. Bierwirth	S. Markowitz
L. T. Detlor	T. G. McCarty
B. E. Foster	C. N. Sherlock
B. C. Jersild	R. D. Wallace
C. Johnson	B. K. Warren
K. L. Kluge	

Subgroup on Ultrasonics (SC V)

P. J. Herbert, <i>Chairman</i>	R. W. McClung
W. C. Koepke, <i>Secretary</i>	W. C. McCaughey
L. J. Chockie	E. D. Potter
N. O. Cross	F. J. Sattler
V. S. Goel	J. C. Spanner, Sr.
E. T. Hughes	F. R. A. Turner
J. F. Manning	

Subgroup on Surface NDE (MT, PT, & ET) (SC V)

H. C. Graber, <i>Chairman</i>	R. M. Jesse
A. S. Birks	L. C. Ludwig
J. B. Christofferson	J. T. Schmidt
J. I. Dantzer	

Special Working Group on Acoustic Emission (SC V)

D. A. White, <i>Chairman</i>	J. M. Nieters
B. H. Clark, Jr.	E. D. Potter
N. O. Cross	J. C. Spanner, Sr.
P. H. Hutton	T. L. Swanson
J. F. Manning	

SUBCOMMITTEE ON PRESSURE VESSELS (SC VIII)

R. J. Cepluch, <i>Chairman</i>	M. H. Jawad
J. R. Farr, <i>Vice Chairman</i>	G. G. Karcher
A. J. Roby, <i>Secretary</i>	J. LeCoff
A. P. Ahrendt	E. E. Morgenegg
R. D. Bonner	C. C. Neely
J. O. Brown	R. F. O'Neill
V. W. Butler	H. C. Oakley
J. J. Duffy	F. O. Parnkopf
R. E. Feigel	A. Selz
H. B. France	D. A. Staskelunas
G. E. Fratcher	J. J. Szigety
W. L. Garvin	J. W. Tackett
B. D. Hackney	K. K. Tam
H. L. Hime	C. M. Vogrin

Special Working Group on Heat Transfer Equipment (SC VIII)

G. G. Karcher, <i>Chairman</i>	A. Lohmeier
J. H. Kissel, <i>Vice Chairman</i>	U. R. Miller
H. A. Schmidt, Jr., <i>Secretary</i>	H. C. Rauschenplat
C. F. Andreone	A. P. Rochino
D. E. Bolt	J. E. Soehrens
G. Borushko	A. I. Soler
S. M. Caldwell	W. A. Treff
T. K. Haldas	S. Yokell

Special Working Group on High Pressure Vessels (SC VIII)

R. F. O'Neill, <i>Chairman</i>	D. P. Kendall
M. E. Sheehan, <i>Secretary</i>	G. J. Mraz
D. J. Burns	E. G. Nisbett
B. W. Cole	H. C. Rauschenplat
C. M. Elwonger	J. R. Sims, Jr.
R. G. Fasiczka	E. R. Sliwinski
R. E. Feigel	D. H. Swift
D. M. Fryer	F. W. Tatar
R. E. Jagger	D. A. Wells

Special Working Group on Stress Multipliers (SC VIII)

C. C. Neely, <i>Chairman</i>	W. L. Garvin
M. J. Hogan, <i>Secretary</i>	C. R. Good
A. P. Ahrendt	R. F. O'Neill
R. E. Feigel	A. R. Ryshavy

Subgroup on General Requirements (SC VIII)

C. C. Neely, <i>Chairman</i>	A. J. Palmer
R. E. Tillberg, <i>Secretary</i>	A. M. Smolen
A. P. Ahrendt	A. J. Spencer
D. D. Carpenter	D. A. Staskelunas
J. J. Duffy	E. A. Steen
W. L. Garvin	W. J. Stuber
B. E. Hrubala	W. E. Vogler
H. C. Oakley	

Subgroup on Materials (SC VIII)

J. W. Tackett, Jr., <i>Chairman</i>	J. Hainsworth
H. L. Hime, <i>Secretary</i>	J. D. McLoughlin
W. C. Banks	E. G. Nisbett
V. W. Butler	K. K. Tam
W. D. Doty	D. A. Wells
J. J. Gaughan	

Subgroup on Design (SC VIII)

M. H. Jawad, <i>Chairman</i>	R. W. Mikitka
R. E. Knoblock, <i>Secretary</i>	R. F. O'Neill
M. R. Bauman	A. Selz
J. R. Farr	J. W. Stokes
R. E. Gleason	K. K. Tam
J. A. Hayward	R. M. Vogel
J. L. Jacobowitz	C. M. Vogrin
G. G. Karcher	

Working Group on Noncircular Vessels (SG-D) (SC VIII)

A. Selz, <i>Chairman</i>	A. M. Smolen
H. B. Peters	E. L. Thomas, Jr.
K. V. Shipps	J. L. Urner

Subgroup on Fabrication and Inspection (SC VIII)

J. J. Szigety, <i>Chairman</i>	H. B. France
R. F. O'Neill, <i>Secretary</i>	M. J. Houle
G. Bibel	J. Lang
R. W. Boyce	F. O. Parnkopf
J. O. Brown	R. E. Schuessler
S. C. Cyr	R. F. Wagner
R. E. Feigel	

Working Group on Layered Vessels (SGFI) (SC VIII)

F. O. Parnkopf, <i>Chairman</i>	G. E. Fratcher
A. M. Smolen, <i>Secretary</i>	J. L. Jacobowitz
S. M. Caldwell	R. E. Pechacek
B. W. Cole	H. C. Rauschenplat

SUBCOMMITTEE ON WELDING (SC IX)

B. D. Hackney, <i>Chairman</i>	R. A. LaPointe
R. K. Sager, Jr., <i>Vice Chairman</i>	R. E. Lorentz, Jr.
P. D. Stumpf, <i>Secretary</i>	A. H. Miller
B. L. Alia	D. K. Peetz
M. L. Carpenter	S. D. Reynolds, Jr.
H. R. W. Cobb	W. K. Scattergood
H. R. Conaway	G. K. Sosnin
W. D. Doty	W. J. Sperko
J. J. Duffy	G. W. Spohn III
P. D. Flenner	D. J. Stull
H. L. Helmbrecht	K. C. Taber
H. L. Hime	R. R. Young
M. J. Houle	

Subgroup on Materials (SC IX)

R. E. Lorentz, Jr., <i>Chairman</i>	R. K. Sager, Jr.
M. L. Carpenter	W. J. Sperko
H. R. Conaway	J. W. Tackett
R. M. Jesse	R. R. Young
A. H. Miller	H. E. Zielke

Subgroup on General Requirements (SC IX)

D. K. Peetz, <i>Chairman</i>	B. R. Newmark
M. V. Davis	A. J. Spencer
J. J. Duffy	K. C. Taber
M. L. Goedecke	C. E. Wainwright
R. M. Jesse	H. E. Zielke
R. P. Meineke	

Subgroup on Procedure Qualification (SC IX)

M. J. Houle, <i>Chairman</i>	A. H. Miller
B. L. Alia	S. D. Reynolds, Jr.
H. R. W. Cobb	W. J. Sperko
H. L. Helmbrecht	E. G. Thompson

Subgroup on Performance Qualification (SC IX)

M. J. Houle, <i>Chairman</i>	W. K. Scattergood
B. W. Cole	G. K. Sosnin
P. D. Flenner	G. W. Spohn III
R. A. LaPointe	D. L. Tevis
P. P. Norris	

Subgroup on Brazing (SC IX)

M. L. Carpenter, <i>Chairman</i>	A. H. Miller
R. A. LaPointe	

SUBCOMMITTEE ON REINFORCED PLASTIC PRESSURE VESSELS (SC X)

D. M. Bertelsman, <i>Chairman</i>	S. V. Hoa
M. J. Hogan, <i>Secretary</i>	L. E. Hunt
D. H. Barton	J. A. Kidd
R. K. Blossch	R. Mohan
L. C. Daniels	J. A. Rolston
T. J. Fowler	

SUBCOMMITTEE ON NUCLEAR INSERVICE INSPECTION (SC XI)

S. H. Bush, <i>Chairman</i>	J. P. Houstrup
W. C. Ham, <i>Vice Chairman</i>	L. R. Katz
K. I. Baron, <i>Secretary</i>	J. J. Lance
C. W. Allison	T. J. Mawson
W. F. Anderson	R. E. Muise
W. H. Bamford	T. G. Parker
H. P. Baron	G. J. Pitzl
R. L. Beverly	R. L. Powers
A. J. Birkle	P. C. Riccardella
R. E. Bullock	R. F. Sammataro
L. J. Chockie	M. E. Schuster, Jr.
D. D. Davis	R. W. Swayne
E. A. DeBarba	J. C. Tobin
F. T. Duba	F. A. Warner
H. L. Gotschall	J. F. Enrietto, Alternate
F. E. Gregor	S. D. Weinman, Staff Representative
L. B. Gross	

Special Working Group on Plant Life Extension (SC XI)

L. R. Katz, <i>Chairman</i>	D. L. Harrison
L. B. Gross, <i>Secretary</i>	D. R. Hostetler
T. L. Bailey	J. P. Houstrup
A. J. Birkle	P. W. Ianni
A. J. Boegel	M. E. Lapidus
L. D. Bustard	J. T. McCumber
D. D. Davis	E. A. Merrick
F. T. Duba	B. M. Morris
F. E. Gregor	D. A. Piccione

Special Working Group on Editing and Review (SC XI)

R. L. Beverly, <i>Chairman</i>	M. E. Schuster, Jr.
A. L. Bradshaw	J. E. Staffiera
R. J. Claverie	R. W. Swayne
L. B. Gross	F. A. Warner
V. H. Hight	

Subgroup on Water-Cooled Systems (SC XI)

A. J. Birkle, <i>Chairman</i>	L. R. Katz
R. L. Powers, <i>Secretary</i>	S. Lefkowitz
C. W. Allison	R. E. Legate
W. F. Anderson	J. B. Martin
A. C. Ashton	C. V. Moore
H. P. Baron	L. Sage
R. J. Claverie	M. T. Strenk
D. D. Davis	R. J. Tamminga
G. A. Delp	F. Tehranchi
G. Gotch	J. H. Uhl
L. B. Gross	F. A. Warner
F. A. Hawksley	G. Wasilenko
T. C. Hinkle	

Working Group on Component Supports (SG-WCS) (SC XI)

D. D. Davis, <i>Chairman</i>	G. P. Knippel
G. L. Belew	C. N. Krishnaswamy
J. T. Boyd	G. C. Millman
R. F. Brandt	R. L. Powers
G. A. Delp	M. P. Zyne
L. N. Hartz	

Working Group on General Requirements (SG-WCS) (SC XI)

R. J. Tamminga, <i>Chairman</i>	L. B. Gross
R. J. Claverie, <i>Secretary</i>	R. H. Hansen
W. F. Anderson	C. E. Hartz
R. G. Edl	D. L. Tevis
R. E. Gimple	C. H. Walters
G. Gotch	

Working Group on Pumps and Valves (SG-WCS) (SC XI)

F. A. Hawksley, <i>Chairman</i>	G. Gotch
L. Sage, <i>Secretary</i>	C. E. Hartz
C. F. Buckley	J. C. Major
F. C. Cherny	

Working Group on Inspection of Systems and Components (SG-WCS) (SC XI)

L. Sage, <i>Chairman</i>	J. B. Martin
T. C. Hinkle, <i>Secretary</i>	R. E. Scott
A. C. Ashton	M. T. Strenk
C. R. Brader	F. Tehranchi
E. J. Brown	J. H. Uhl
F. N. Famulari	R. J. Von Osinski
T. F. Lentz	W. F. Anderson, <i>Alternate</i>

Subgroup on Gas-Cooled Systems (SC XI)

F. A. Warner, <i>Chairman</i>	F. E. Lesko
R. H. Hansen, <i>Secretary</i>	F. B. Litton
H. L. Gotschall	R. W. Peters

Subgroup on Liquid-Metal Cooled Systems (SC XI)

H. C. Jung, <i>Secretary</i>	L. J. Nemeth
W. L. Chase	G. Seed
R. Hundal	J. C. Tobin
J. Matte III	T. J. Walker

Working Group on Liquid-Metal Reactor Covers (SGLMCS) (SC XI)

W. L. Chase, <i>Chairman</i>	L. J. Nemeth
J. Matte III	G. Seed

Subgroup on Containment (SC XI)

R. F. Sammataro, <i>Chairman</i>	H. T. Hill
J. E. Staffiera, <i>Secretary</i>	T. P. Keaveney
W. J. Briggs	D. R. Pitcairn
R. E. Bullock	A. J. Spencer
F. E. Gregor	J. F. Strunk
K. S. Herring	P. W. Ward

Working Group on Concrete Pressure Components (SG-C) (SC XI)

H. T. Hill, <i>Chairman</i>	H. L. Gotschall
J. F. Fulton, <i>Secretary</i>	S. Guha-Majumdar
H. G. Ashar	C. N. Krishnaswamy
R. E. Bullock	A. M. Salley
C. A. Byrd	P. W. Ward

Subgroup on Evaluation Standards (SC XI)

W. H. Bamford, <i>Chairman</i>	T. J. Griesbach
J. P. Houstrup, <i>Secretary</i>	S. Ranganath
C. B. Buchalet	P. C. Riccardella
C. Y. Cheng	W. A. Vandersluys
R. L. Cloud	S. Yukawa
E. A. DeBarba	

**Special Working Group on Operating Plant Criteria (SG-ES)
(SC XI)**

T. J. Griesbach, <i>Chairman</i>	J. G. Merkle
W. L. Allan	A. G. Panagos
W. H. Bamford	J. S. Panesar
H. Behnke	P. C. Paris
J. M. Bloom	J. H. Phillips
C. B. Buchalet	P. N. Randall
R. C. Cipolla	S. Ranganath
W. C. Cliff	W. L. Server
E. Friedman	F. A. Simonen
R. M. Gamble	H. W. Slager
S. R. Gosselin	A. V. A. Swaroop
J. A. Hayward	L. E. Titland
J. P. Houstrup	G. M. Wilkowski
K. Ijzerman	J. E. Wilson
R. E. Johnson	K. K. Yoon
M. Kupinski	S. Yukawa
S. D. Leshnoff	

Working Group on Flaw Evaluation (SG-ES) (SC XI)

R. C. Cipolla, <i>Chairman</i>	P. C. Paris
W. H. Bamford	P. P. Raju
J. M. Bloom	S. Ranganath
C. B. Buchalet	W. L. Server
C. Y. Cheng	F. A. Simonen
N. W. Edwards	A. V. A. Swaroop
E. Friedman	G. M. Wilkowski
T. J. Griesbach	J. E. Wilson
J. P. Houstrup	K. K. Yoon
M. Kupinski	S. Yukawa
J. G. Merkle	V. A. Zilberstein
J. S. Panesar	

Subgroup on Nondestructive Examination (SC XI)

E. A. DeBarba, <i>Chairman</i>	F. J. Dodd
J. F. Cook, <i>Secretary</i>	M. R. Hum
D. C. Adamonis	J. J. Lance
F. L. Becker	C. R. Osman
R. L. Beverly	J. C. Spanner, Jr.
C. B. Cheezem	J. C. Spanner, Sr.
C. D. Cowfer	R. W. Swayne
G. J. Dau	

**Working Group on Procedure Qualification and Volumetric
Examination (SG-NDE) (SC XI)**

C. D. Cowfer, <i>Chairman</i>	O. DeMiranda
N. R. Bentley, <i>Secretary</i>	F. J. Dodd
D. C. Adamonis	M. R. Hum
F. L. Becker	J. J. Lance
C. B. Cheezem	J. C. Spanner, Jr.
W. T. Clayton	T. T. Taylor
J. F. Cook	

**Working Group on Personnel Qualification and Surface Visual
and Eddy Current Examination (SG-NDE) (SC XI)**

V. H. Hight, <i>Secretary</i>	F. A. Hawksley
G. E. Abell	C. J. Hellier
S. D. Brown	W. C. Koepke
J. E. Cavender, Jr.	C. R. Osman
F. T. Duba	J. M. Ray
L. Frank	A. L. Smith

Subgroup on Repairs and Replacements (SC XI)

T. J. Mawson, <i>Chairman</i>	S. R. Eley
M. J. Crisler, <i>Secretary</i>	J. F. Enrietto
E. T. Baker III	W. L. Garvin
D. C. Bertossa	R. D. Kerr
J. D. Boardman	G. J. Pitzl
A. D. Bunch	M. E. Schuster, Jr.
J. Derrico	J. C. Tobin
F. T. Duba	K. D. Verble

Working Group on Repairs (SC XI)

J. Derrico, <i>Chairman</i>	R. F. Hollander
D. C. Bertossa	R. D. Kerr
J. D. Boardman	D. R. Pitcairn
R. W. Boyce	R. W. Swayne
J. F. Enrietto	S. Tobey

Special Working Group on Repair by Welding (SG-RR) (SC XI)

S. Tobey, <i>Chairman</i>	R. Labott
B. G. Carlton, <i>Secretary</i>	R. A. LaPointe
D. C. Bertossa	W. E. Mayott
B. R. Crowley	R. A. Moen
M. L. Goedecke	B. R. Newmark
M. J. Houle	P. P. Norris
W. R. Johnson	D. L. Tevis
H. J. Kaplan	E. H. Williams

Working Group on Replacements (SG-RR) (SC XI)

M. J. Crisler, <i>Chairman</i>	R. E. Legate
E. T. Baker III	G. J. Pitzl
A. D. Bunch	M. E. Schuster, Jr.
S. R. Eley	A. J. Spencer
W. Kooy	R. E. Tschirch

SUBCOMMITTEE ON PROPERTIES OF METALS (SC-P)

D. A. Canonico, <i>Chairman</i>	E. T. Ishizaka
J. P. Millman, <i>Secretary</i>	R. H. Moeller
A. P. Ahrendt	R. A. Moen
H. T. Corten	W. J. O'Donnell
T. M. Cullen	A. J. Palmer
W. D. Doty	B. W. Roberts
A. R. Faulkner	D. I. Roberts
M. Gold	C. E. Spaeder
D. G. Harman	J. W. Tackett
S. O. Hilton	R. T. Webster

Subgroup on Strength, Ferrous Alloys (SC-P)

M. Gold, <i>Chairman</i>	E. T. Ishizaka
A. P. Ahrendt	J. F. Longenecker
V. W. Butler	R. A. Moen
D. A. Canonico	B. W. Roberts
T. M. Cullen	D. I. Roberts
R. J. Diletto	C. E. Spaeder
W. C. Hagel	G. M. Supko
S. O. Hilton	

Subgroup on Strength, Nonferrous Alloys (SC-P)

D. G. Harman, <i>Chairman</i>	R. A. Rosenberg
J. W. Barr	E. Shapiro
T. H. Bassford	J. W. Tackett
G. A. Knapp	R. T. Webster

**Subgroup on Strength of Weldments (SC-P) & (SC IX)
(Joint Subgroup)**

W. D. Doty, <i>Chairman</i>	B. W. Roberts
H. R. W. Cobb	D. I. Roberts
D. P. Edmonds	R. K. Sager, Jr.
E. T. Ishizaka	C. E. Spaeder

Subgroup on Toughness (SC-P)

H. T. Corten, <i>Chairman</i>	R. K. Nanstad
D. J. Ayres	E. G. Nisbett
J. M. Barsom	A. Selz
R. M. Brown	I. Sprung
R. F. Cappelini	R. D. Stout
W. Hanzalek	M. F. Wheatcroft
W. S. Hazelton	S. Yukawa
E. I. Landerman	R. Zawierucha
F. J. Loss	

Working Group on Non-nuclear Application (SG-T) (SC-P)

A. Selz, <i>Chairman</i>	M. F. Wheatcroft
E. G. Nisbett	R. Zawierucha
R. D. Stout	

Working Group on Nuclear Application (SG-T) (SC-P)

E. I. Landerman, <i>Chairman</i>	F. J. Loss
R. F. Cappelini	A. Selz
W. S. Hazelton	

Working Group on Toughness Criteria (SG-T) (SC-P)

H. T. Corten, <i>Chairman</i>	R. K. Nanstad
D. J. Ayres	S. Yukawa
J. M. Barsom	

SUBCOMMITTEE ON SAFETY VALVE REQUIREMENTS (SC-SV)

E. C. Kistner, Jr., <i>Chairman</i>	R. J. Doelling
W. L. Garvin, <i>Vice Chairman</i>	W. D. Greenlaw
J. S. Brzuszkiewicz, <i>Secretary</i>	H. I. Gregg
G. C. Batz	S. F. Harrison, Jr.
M. D. Bernstein	F. J. Howes
R. K. Blosch	T. L. Hughes
J. Cahoon, Jr.	M. A. Robinson
R. A. Cedel	A. J. Schmidt
O. J. Cox, Jr.	A. J. Spencer
E. C. Cullie	S. M. Sullivan
V. M. DeLuca	K. J. Szigety

Subgroup on General Requirements (SC-SV)

M. D. Bernstein, <i>Chairman</i>	T. L. Hughes
F. J. Howes	M. A. Robinson

Subgroup on Testing (SC-SV)

O. J. Cox, Jr., <i>Chairman</i>	S. F. Harrison, Jr.
E. C. Cullie	K. J. Szigety
V. M. DeLuca	

Subgroup on Design (SC-SV)

W. D. Greenlaw, <i>Chairman</i>	J. Cahoon, Jr.
G. C. Batz	H. I. Gregg
R. K. Blosch	A. J. Schmidt

SUBCOMMITTEE ON DESIGN (SC-D)

J. R. Farr, <i>Chairman</i>	E. E. Morgeneegg
R. I. Jetter, <i>Vice Chairman</i>	W. J. O'Donnell
M. J. Hogan, <i>Secretary</i>	S. S. Palusamy
O. F. Hedden	R. D. Schueler, Jr.
M. H. Jawad	M. P. Schwartz
C. A. Moore	

Subgroup on Openings (SC-D)

M. P. Schwartz, <i>Chairman</i>	P. P. Raju
S. C. Lou, <i>Secretary</i>	E. C. Rodabaugh
F. C. Adamek	H. H. Schneider
M. N. Bressler	R. W. Schneider
R. E. Gleason	H. K. Shaw
R. W. Mikitka	D. L. Shira
K. C. Morrison	

Officers of ASTM Committees

(Cooperating in the Development of the Specifications Herein)

Committee E-7 on Nondestructive Testing

R.R. Hardison, *Chairman*, Newport News Shipbuilding and Drydock Co.

J.S. Boroucki, *First Vice-Chairman*, Ardrex

J.C. Spanner, *Second Vice-Chairman*, Battelle — Northwest

T.F. Drumwright, Jr., *Secretary*, ALCOA

G. Moran, *Membership Secretary*, PSE&G Research Corp.

G.A. Luccin, *Staff Manager*, ASTM

CONTENTS

A Detailed Contents Precedes Subsection A, the Articles in Subsection B,
and the Appendices

Foreword	v	
Statements of Policy	vii	
Personnel	ix	
Subsection A	Nondestructive Methods of Examination	1
Article 1	General Requirements	11
Article 2	Radiographic Examination	15
Article 4	Ultrasonic Examination Methods for Inservice Inspection	35
Article 5	Ultrasonic Examination Methods for Materials and Fabrication.....	57
Article 6	Liquid Penetrant Examination.....	81
Article 7	Magnetic Particle Examination.....	89
Article 8	Eddy Current Examination of Tubular Products.....	97
Article 9	Visual Examination	107
Article 10	Leak Testing.....	113
Article 11	Acoustic Emission Examination of Fiber-Reinforced Plastic Vessels.....	131
Subsection B	Documents Adopted by Section V	157
Article 22	Radiographic Standards	161
Article 23	Ultrasonic Standards.....	203
Article 24	Liquid Penetrant Standards.....	269
Article 25	Magnetic Particle Standards.....	297
Article 26	Eddy Current Standards	345
Article 27	Leak Testing Standards	373
Article 28	Visual Examination Standards.....	387
Appendix A	Nonmandatory Standard Definitions of Terms	409
Appendix B	Mandatory Preparation of Technical Inquiries to the Boiler and Pressure Vessel Committee.....	441
SI Units		443
Index		447

Subsection A

**Nondestructive Methods
of Examination**

SUBSECTION A

Article 1	General Requirements	9
T-110	Scope	11
T-120	References to Paragraphs and Standards	11
T-130	Manufacturer's Examination Responsibility	11
T-140	Duties of Authorized Inspector	12
T-150	Procedures	12
T-160	Inspection and Examination	12
T-170	Qualification of Personnel	12
Article 2	Radiographic Examination	13
T-210	Scope	15
T-220	General Requirements	15
T-230	Equipment and Materials	16
T-260	Calibration	16
T-270	Examination	16
T-280	Evaluation	24
T-290	Documentation	24
Figures		
T-272.1(a)	Maximum Voltage for Steel	18
T-272.1(b)	Maximum Voltage for Alloys of Copper and/or High Nickel	19
T-272.1(c)	Maximum Voltage Permitted for Aluminum and Aluminum Alloys	21
T-275	Location Marker Sketches	22
Tables		
T-233	Penetrometer Designation, Thickness, and Hole Diameters	16
T-276	Material Thickness, Penetrometer Designations, and Essential Holes	23
Mandatory Appendix		27
Nonmandatory Appendix		
Appendix A	Technique Sketches for Pipe or Tube Welds	29
Figure		
I-263		28
Article 4	Ultrasonic Examination Methods for Inservice Inspection	33
T-410	Scope	35

T-420	General Requirements	35
T-430	Equipment	36
T-440	Applications	37
T-450	Evaluation	42
T-460	Records	43
T-470	Report	43

Figures

T-441.1	Basic Calibration Block	38
T-441.2	Ratio Limits for Curved Surfaces	40

Mandatory Appendices

Appendix I	Screen Height Linearity	45
Appendix II	Amplitude Control Linearity	45

Nonmandatory Appendices

Appendix A	Layout of Vessel Reference Points	47
Appendix B	General Technique for Angle Beam Calibrations	47
Appendix C	General Techniques for Straight Beam Calibrations.....	51
Appendix D	Data Record for a Planar Reflector.....	51

Figures

I-1	Linearity	45
B-10	Sweep Range	48
B-20	Sensitivity and Distance Amplitude Correction	48
B-40	Position Depth and Beam Path	49
B-50	Planar Reflectors	50
B-60	Beam Spread	50
C-10	Sweep Range	51
C-20	Sensitivity and Distance Amplitude Correction	52
D-10	Reflector Reading	53

Article 5	Ultrasonic Examination Methods for Materials and Fabrication	55
T-510	Scope	57
T-520	General Requirements	57
T-530	Equipment and Supplies	58
T-540	Applications	58
T-580	Evaluation	71
T-590	Reports and Records	71

Figures

T-541.4.1.2(b)	Angle Beam Calibration Block	61
T-541.5.1	Straight Beam (FBH) Calibration Block	62
T-542.2.1	Basic Calibration Block	64
T-542.3.5	Ratio Limits for Curved Surfaces	66
T-542.8.1.1	Angle Beam Calibration (Pipe Welds)	68
T-543.2	Calibration Block for Technique One	70

Tables		
T-541.5.1	Flat Bottom Hole Requirements	62
T-541.5.2	Calibration Block Designation per Length and Hole Location	62
Mandatory Appendices		
Appendix I	Screen Height Linearity	73
Appendix II	Amplitude Control Linearity	73
Nonmandatory Appendix		
Appendix A	Alternate Calibration Block Configuration	75
Figures		
I-1	Linearity	73
A-10(a)	Critical Radius R_c for Transducer/Couplant Combinations	76
A-10(b)	Correction Factor (Gain) for Various Ultrasonic Examination Parameters	77
Table		
A-10	Transducer Factor F_t for Various Ultrasonic Transducer Diameters and Frequencies	75
Article 6		
	Liquid Penetrant Examination	79
T-600	Introduction	81
T-610	Scope	81
T-620	General Requirements	81
T-640	Examination	83
T-650	Evaluation	85
Figure		
T-647.2	Liquid Penetrant Comparator	85
Article 7		
	Magnetic Particle Examination	87
T-700	Introduction	89
T-710	Scope	89
T-720	General Requirements	89
T-730	Calibration of Equipment	91
T-740	Examination	91
T-750	Evaluation	94
T-760	Reports	94
Figures		
T-727	Magnetic Particle Field Indicator.....	91
T-745.2	Single Turn and Two Turn Central Conductor Technique.....	93
Article 8		
	Eddy Current Examination of Tubular Products	95
T-810	Scope	97
T-820	General	97

T-830	Description of Method	97
T-840	Reference Specimen	97
T-850	Equipment Qualification	97
T-860	Acceptance Requirements	98
T-870	Procedure Requirements	98
 Appendix I		
I-800	Introduction	99
I-810	Scope	99
I-820	General Requirements	99
I-830	Equipment	99
I-850	Technique.....	99
I-860	Calibration	99
I-870	Examination	102
I-880	Evaluation	102
I-890	Documentation.....	103
 Figures		
I-862-1	Typical Signal Response From a Properly Calibrated Differential Bobbin Coil Probe System	100
I-862-2	Typical Signal Response From a Properly Calibrated Absolute Bobbin Coil Probe System.....	101
I-865-1	Phase Angle vs Flaw Depth Inconel Tube, 400 kHz (Typical 0.050 in. Wall Tube).....	102
 Article 9		
	Visual Examination	105
T-910	Scope	107
T-920	General Requirements	107
T-940	Applications	107
T-950	Evaluation	108
T-960	Reports	108
T-970	Records	108
 Article 10		
	Leak Testing	109
T-1000	Introduction	113
T-1010	Scope	113
T-1020	General Requirements	113
T-1030	Calibration Requirements	114
T-1040	Test (Leak Testing Methods and Techniques).....	114
T-1050	Evaluation	115
T-1060	Documentation	115
T-1070	Reports	115
 Mandatory Appendices		
Appendix I	Bubble Test — Direct Pressure Technique	117
Appendix II	Bubble Test — Vacuum Box Technique	118
Appendix III	Halogen Diode Detector Probe Test	119
Appendix IV	Helium Mass Spectrometer Test — Detector Probe Technique	121

Appendix V	Helium Mass Spectrometer Test — Tracer Probe and Hood Techniques	123
Appendix VI	Pressure Change Test	125
Nonmandatory Appendix		
Appendix A	Supplementary Leak Testing Formula Symbols	127
Table		
III-1025.1	Tracer Gases	119
Article 11		
	Acoustic Emission Examination of Fiber-Reinforced Plastic Vessels	129
T-1110	Scope	131
T-1120	General	131
T-1130	Equipment and Supplies	133
T-1140	Application Requirements	133
T-1160	Calibration	134
T-1180	Evaluation	134
T-1190	Documentation	140
Figures		
T-1142(c)(1)(a)	Atmospheric Vessels Stressing Sequence	135
T-1142(c)(1)(b)	Vacuum Vessels Stressing Sequence	136
T-1142(c)(1)(c)	Test Algorithm – Flow Chart For Atmospheric Vessels	137
T-1142(c)(2)(a)	Pressure Vessel Stressing Sequence	138
T-1142(c)(2)(b)	Algorithm – Flow Chart For Pressure Vessels	139
Tables		
T-1121	Requirements for Reduced Operating Level Immediately Prior to Examination	132
T-1181	Evaluation Criteria	140
Mandatory Appendices		
Appendix I	Instrumentation Performance Requirements	143
Appendix II	Instrument Calibration	145
Nonmandatory Appendix		
Appendix A	Sensor Placement Guidelines	150
Figure		
I-1183	Sample of Schematic of AE Instrumentation for Vessel Examination	146

ARTICLE 1

T-110	Scope	11
T-120	References to Paragraphs and Standards	11
T-130	Manufacturer's Examination Responsibility	11
T-140	Duties of Authorized Inspector	12
T-150	Procedures	12
T-160	Inspection and Examination	12
T-170	Qualification of Personnel	12

ARTICLE 1

GENERAL REQUIREMENTS

T-110 SCOPE

(a) This Section of the Code contains requirements and methods for nondestructive examination which are Code requirements to the extent they are specifically referenced and required by other Code Sections. These nondestructive examination methods are intended to detect surface and internal discontinuities in materials, welds, and fabricated parts and components. They include radiographic examination, ultrasonic examination, liquid penetrant examination, magnetic particle examination, eddy current examination, visual examination, and leak testing.

(b) Subsection A describes the methods of nondestructive examination to be used if referenced by other Code Sections.

(c) The acceptance standards for these methods shall be as stated in the referencing Code Section.

(d) Subsection B lists Standards covering nondestructive examination methods which have been accepted as standards. These standards are intended to be informative only and are nonmandatory unless specifically referenced in whole or in part in Subsection A or as indicated in other Code Sections.

(e) The nondestructive examination methods included in this Section are applicable to most geometric configurations and materials encountered in fabrication under normal conditions. However, special configurations and materials may require modified methods and techniques, in which case the manufacturer shall develop special procedures which are equivalent or superior to the methods and techniques described in this Code Section, and which are capable of producing interpretable examination results under the special conditions. Such special procedures may be modifications or combinations of methods described or referenced in this Code Section, and shall be proved by demonstration to be capable of detecting discontinuities under the special conditions, and such demonstrated capabilities shall be equivalent to the capabilities of the methods described in this Code Section

when used under more general conditions. Depending on the quality assurance or quality control system requirements of the referencing Code Section, these special procedures shall be submitted to the Inspector for acceptance where required, and shall be adopted as part of the manufacturer's quality control program.

T-120 REFERENCES TO PARAGRAPHS AND STANDARDS

(a) Reference to a paragraph of any Article in Subsection A of this Section or in the referencing Code Section includes all of the applicable rules in the paragraph.¹ In every case, reference to a paragraph includes all the subparagraphs and subdivisions under that paragraph.

(b) Reference to a Standard contained in Subsection B is mandatory only to the extent specified in an Article of Subsection A or as specified in other Code Sections.²

T-130 MANUFACTURER'S EXAMINATION RESPONSIBILITY

When an examination to the requirements of this Code Section is required by any other referencing Code Section, it shall be the responsibility of the manufacturer, fabricator, or installer to establish suitable examination procedures and to have the examination performed by qualified personnel in accordance with the requirements of the referencing Code Section. Any limitations or restrictions placed

¹For example, reference to T-270 includes all the rules contained in T-271 through T-277.3.

²Using SE-94 in Subsection B as an example, T-231.1 references Table 2, and T-231.2 references Part III. These are the only parts of SE-94 that are mandatory in Article 2.