

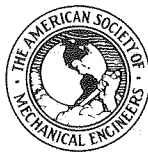
274

ASME BOILER AND PRESSURE VESSEL CODE
AN AMERICAN NATIONAL STANDARD

SECTION IV
Rules for Construction of
Heating Boilers

1989 EDITION

JULY 1, 1989



ASME BOILER AND PRESSURE VESSEL COMMITTEE
SUBCOMMITTEE ON HEATING BOILERS

THE AMERICAN SOCIETY OF MECHANICAL ENGINEERS
United Engineering Center 345 East 47th Street New York, N.Y. 10017

Date of Issue — July 1, 1989
(Includes all Addenda dated December 1988 and earlier)

This code or standard was developed under procedures accredited as meeting the criteria for American National Standards. The Consensus Committee that approved the code or standard was balanced to assure that individuals from competent and concerned interests have had an opportunity to participate. The proposed code or standard was made available for public review and comment which provides an opportunity for additional public input from industry, academia, regulatory agencies, and the public-at-large.

ASME does not "approve," "rate," or "endorse" any item, construction, proprietary device, or activity.

ASME does not take any position with respect to the validity of any patent rights asserted in connection with any items mentioned in this document, and does not undertake to insure anyone utilizing a standard against liability for infringement of any applicable Letters Patent, nor assume any such liability. Users of a code or standard are expressly advised that determination of the validity of any such patent rights, and the risk of infringement of such rights, is entirely their own responsibility.

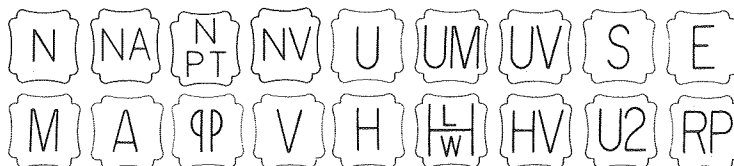
Participation by federal agency representative(s) or person(s) affiliated with industry is not to be interpreted as government or industry endorsement of this code or standard.

ASME accepts responsibility for only those interpretations issued in accordance with governing ASME procedures and policies which preclude the issuance of interpretations by individual volunteers.

The footnotes in this document are part of this American National Standard.



ASME collective membership mark



The above ASME symbols are registered in the U.S. Patent Office.
"ASME" is the trademark of the American Society of Mechanical Engineers.

Copyright © 1989 by
THE AMERICAN SOCIETY OF MECHANICAL ENGINEERS
All Rights Reserved

No part of this document may be reproduced in any form, in an electronic retrieval system or otherwise, without the prior written permission of the publisher.

Library of Congress Catalog Card Number: 56-3934
Printed in the United States of America

Adopted by the Council of the American Society of Mechanical Engineers, 1914.
Revised 1940, 1941, 1943, 1946, 1949, 1952, 1953, 1956, 1959, 1962, 1965, 1968, 1971, 1974, 1977, 1980, 1983, 1986, 1989

1989 ASME BOILER AND PRESSURE VESSEL CODE

SECTIONS

- I Power Boilers
- II Material Specifications
 - Part A — Ferrous Materials
 - Part B — Nonferrous Materials
 - Part C — Welding Rods, Electrodes, and Filler Metals
- III Subsection NCA — General Requirements for Division 1 and Division 2
- III Division 1
 - Subsection NB — Class 1 Components
 - Subsection NC — Class 2 Components
 - Subsection ND — Class 3 Components
 - Subsection NE — Class MC Components
 - Subsection NF — Component Supports
 - Subsection NG — Core Support Structures
 - Appendices
- III Division 2 — Code for Concrete Reactor Vessels and Containments
- IV Heating Boilers
- V Nondestructive Examination
- VI Recommended Rules for Care and Operation of Heating Boilers
- VII Recommended Guidelines for the Care of Power Boilers
- VIII Pressure Vessels
 - Division 1
 - Division 2 — Alternative Rules
- IX Welding and Brazing Qualifications
- X Fiber-Reinforced Plastic Pressure Vessels
- XI Rules for Inservice Inspection of Nuclear Power Plant Components

ADDENDA

Colored-sheet Addenda, which include additions and revisions to individual Sections of the Code, are published annually and will be sent automatically to purchasers of the applicable Sections up to the publication of the 1992 Code. The 1989 Code is available only in the loose-leaf format; accordingly, the Addenda will be issued in the loose-leaf, replacement-page format.

INTERPRETATIONS

ASME issues written replies to inquiries concerning interpretation of technical aspects of the Code. The Interpretations for each individual Section will be published separately and will be included as part of the update service to that Section. They will be issued semiannually (July and December) up to the publication of the 1992 Code. Interpretations of Section III, Divisions 1 and 2, will be included with the update service to Subsection NCA. Interpretations are not part of the Code or the Addenda.

CODE CASES

The Boiler and Pressure Vessel Committee meets regularly to consider proposed additions and revisions to the Code and to formulate Cases to clarify the intent of existing requirements or provide, when the need is urgent, rules for materials or constructions not covered by existing Code rules. Those Cases which have been adopted will appear in the appropriate 1989 Code Cases book: (1) Boilers and Pressure Vessels and (2) Nuclear Components. Supplements will be sent automatically to the purchasers of the Code Cases books up to the publication of the 1992 Code.

Currently in preview, click buy full version

FOREWORD

The American Society of Mechanical Engineers set up a committee in 1911 for the purpose of formulating standard rules for the construction of steam boilers and other pressure vessels. This committee is now called the Boiler and Pressure Vessel Committee.

The Committee's function is to establish rules of safety governing the design, fabrication, and inspection during construction of boilers and pressure vessels, and to interpret these rules when questions arise regarding their intent. In formulating the rules, the Committee considers the needs of users, manufacturers, and inspectors of pressure vessels. The objective of the rules is to afford reasonably certain protection of life and property and to provide a margin for deterioration in service so as to give a reasonably long, safe period of usefulness. Advancements in design and material and the evidence of experience have been recognized.

The Boiler and Pressure Vessel Committee deals with the care and inspection of boilers and pressure vessels in service only to the extent of providing suggested rules of good practice as an aid to owners and their inspectors.

The rules established by the Committee are not to be interpreted as approving, recommending, or endorsing any proprietary or specific design or as limiting in any way the manufacturer's freedom to choose any method of design or any form of construction that conforms to the Code rules.

The Boiler and Pressure Vessel Committee meets regularly to consider revisions of the rules, new rules as dictated by technological development, Code Cases, and requests for interpretations. Requests for interpretation must be addressed to the Secretary in writing and must give full particulars in order to receive consideration and a written interpretation (see Mandatory Appendix covering preparation of technical inquiries). Proposed revisions to the Code resulting from inquiries will be presented to the Main Committee for appropriate action. The action of the Main Committee becomes effective only after confirmation by letter ballot of the Committee and approval by ASME.

Proposed revisions to the Code approved by the

Committee are submitted to the American National Standards Institute and published in *Mechanical Engineering* to invite comments from all interested persons. After the allotted time for public review and final approval by ASME, revisions are published annually in Addenda to the Code.

Code Cases may be used in the construction of components to be stamped with the ASME Code symbol beginning with the date of their approval by ASME.

After Code revisions are approved by ASME, they may be used beginning with the date of issuance shown on the Addenda. Revisions become mandatory as minimum requirements six months after such date of issuance, except for boilers or pressure vessels contracted for prior to the end of the six-month period.

Manufacturers and users of components are cautioned against making use of revisions and Cases that are less restrictive than former requirements without having assurance that they have been accepted by the proper authorities in the jurisdiction where the component is to be installed.

Each state and municipality in the United States and each province in Canada that adopts or accepts one or more Sections of the Boiler and Pressure Vessel Code is invited to appoint a representative to act on the Conference Committee to the Boiler and Pressure Vessel Committee. Since the members of the Conference Committee are in active contact with the administration and enforcement of the rules, the requirements for inspection in this Code correspond with those in effect in their respective jurisdictions. The required qualifications for an Authorized Inspector under these rules may be obtained from the administrative authority of any state, municipality, or province which has adopted these rules.

The Boiler and Pressure Vessel Committee in the formulation of its rules and in the establishment of maximum design and operating pressures considers materials, construction, methods of fabrication, inspection, and safety devices. Permission may be granted to regulatory bodies and organizations publishing safety standards to use a complete Section of the Code

by reference. If usage of a Section, such as Section IX, involves exceptions, omissions, or changes in provisions, the intent of the Code might not be attained.

Where a state or other regulatory body, in the printing of any Section of the Boiler and Pressure Vessel Code, makes additions or omissions, it is recommended that such changes be clearly indicated.

The National Board of Boiler and Pressure Vessel Inspectors is composed of chief inspectors of states and municipalities in the United States and of provinces in Canada that have adopted the Boiler and Pressure Vessel Code. This Board, since its organization in 1919, has functioned to uniformly administer and enforce the rules of the Boiler and Pressure Vessel Code. The cooperation of that organization with the Boiler and Pressure Vessel Committee has been extremely helpful.

It should be pointed out that the state or municipality where the Boiler and Pressure Vessel Code has been made effective has definite jurisdiction over any particular installation. Inquiries dealing with problems of local character should be directed to the proper authority of such state or municipality. States, provinces, municipalities, or other regulatory bodies may, if there is any question or doubt as to the proper interpretation, refer the question to the Boiler and Pressure Vessel Committee.

The Specifications for base materials given in Section II, Parts A and B, are identical with or similar to those of The American Society for Testing and Materials. When reference is made in an ASME Material Specification to an ASTM Specification for which a companion ASME Specification exists, the reference shall be interpreted as applying to the ASME Material Specification. Specifications for welding materials given in Section II, Part C, are identical with or similar to those of the American Welding Society. Not all materials included in the ASME Material Specifications in Section II have been adopted for Code use. Usage is limited to those materials and grades adopted by at least one

of the other Sections of the Code for application under rules of that Section. All materials allowed by these various Sections and used for construction within the scope of their rules shall be furnished in accordance with ASME Material Specifications contained in Section II except where otherwise provided in Code Cases or in the applicable Section of the Code. Materials covered by these Specifications are acceptable for use in items covered by the Code Sections only to the degree indicated in the applicable Section. Materials for Code use should preferably be ordered, produced, and documented on this basis; however, material produced under an ASTM Specification may be used in lieu of the corresponding ASME Specification, provided the requirements of the ASTM Specification are identical (excluding editorial differences) or more stringent than the ASME Specification for the Grade, Class, or Type produced and provided that the material is confirmed as complying with the ASTM Specification. Material produced to an ASTM specification with requirements different from the requirements of the corresponding ASME Specification may also be used in accordance with the above, provided the material manufacturer or vessel manufacturer certifies with evidence acceptable to the Authorized Inspector that the corresponding ASME Specification requirements have been met. Material produced to an ASME or ASTM Material Specification is not limited as to country of origin.

When required by context in this Section, the singular shall be interpreted as the plural, and vice-versa; and the feminine, masculine, or neuter gender shall be treated as such other gender as appropriate.

Publication of the SI (Metric) Edition of the ASME Boiler and Pressure Vessel Code was discontinued with the 1986 Edition. Effective October 1, 1986, the SI Edition was withdrawn as an ASME Boiler and Pressure Vessel Code document.

STATEMENT OF POLICY ON THE USE OF CODE SYMBOLS AND CODE AUTHORIZATION IN ADVERTISING

ASME has established procedures to authorize qualified organizations to perform various activities in accordance with the requirements of the ASME Boiler and Pressure Vessel Code. It is the aim of the Society to provide recognition of organizations so authorized. An organization holding authorization to perform various activities in accordance with the requirements of the Code may state this capability in its advertising literature.

Organizations that are authorized to use Code Symbols for marking items or constructions which have been constructed and inspected in compliance with the ASME Boiler and Pressure Vessel Code are issued Certificates of Authorization. It is the aim of the Society to maintain the standing of the Code Symbols for the benefit of the users, the enforcement jurisdictions, and the holders of the symbols who comply with all requirements.

Based on these objectives, the following policy has been established on the usage in advertising of facsimiles of the symbols, Certificates of Authorization, and reference to Code construction. The American Society

of Mechanical Engineers does not "approve," "certify," "rate," or "endorse" any item, construction, or activity and there shall be no statements or implications which might so indicate. An organization holding a Code Symbol and/or a Certificate of Authorization may state in advertising literature that items, constructions, or activities "are built (produced or performed) or activities conducted in accordance with the requirements of the ASME Boiler and Pressure Vessel Code," or "meet the requirements of the ASME Boiler and Pressure Vessel Code."

The ASME Symbol shall be used only for stamping and nameplates as specifically provided in the Code. However, facsimiles may be used for the purpose of fostering the use of such construction. Such usage may be by an association or a society, or by a holder of a Code Symbol who may also use the facsimile in advertising to show that clearly specified items will carry the symbol. General usage is permitted only when all of a manufacturer's items are constructed under the rules.

STATEMENT OF POLICY ON THE USE OF ASME MARKING TO IDENTIFY MANUFACTURED ITEMS

The ASME Boiler and Pressure Vessel Code provides rules for the construction of boilers, pressure vessels, and nuclear components. This includes requirements for materials, design, fabrication, examination, inspection, and stamping. Items constructed in accordance with all of the applicable rules of the Code are identified with the official Code Symbol Stamp described in the governing Section of the Code.

Markings such as "ASME," "ASME Standard," or any other marking including "ASME" or the various Code Symbols shall not be used on any item which is

not constructed in accordance with all of the applicable requirements of the Code.

Items shall not be described on ASME Data Report Forms nor on similar forms referring to ASME which tend to imply that all Code requirements have been met when, in fact, they have not been. Data Report Forms covering items not fully complying with ASME requirements should not refer to ASME or they should clearly identify all exceptions to the ASME requirements.

Currently in preview, click buy full version

PERSONNEL

ASME Boiler and Pressure Vessel Committee

Subcommittees, Subgroups, and Working Groups

As of December 31, 1988

MAIN COMMITTEE

W. R. Mikesell, <i>Chairman</i>	G. G. Karcher
R. J. Cepluch, <i>Vice Chairman</i>	E. C. Kistner, Jr.
G. M. Eisenberg, <i>Secretary</i>	W. G. Knecht
B. W. Bace	J. R. MacKay
M. D. Bernstein	T. J. Mawson
R. J. Bosnak	T. G. McCarty
M. N. Bressler	D. J. McDonald
D. A. Canonico	U. R. Miller
L. J. Chockie	C. C. Neely
H. F. Dobel	T. E. Northup
W. D. Doty	R. F. O'Neill
J. R. Farr	R. F. Reedy
B. D. Hackney	M. L. Snow, Jr.
W. C. Ham	J. W. Tackett
H. L. Hime	R. E. Feigel, <i>Alternate</i>
M. H. Jawad	

HONORS AND AWARDS COMMITTEE

H. F. Dobel, <i>Chairman</i>	R. C. Hudson
G. M. Eisenberg, <i>Secretary</i>	M. H. Jawad
J. R. Farr	E. C. Kistner, Jr.
C. E. Ford	E. G. Nisbett
G. E. Fratcher	R. K. Sager, Jr.
W. L. Garvin	J. W. Tackett
O. F. Hedden	

EXECUTIVE COMMITTEE (MAIN COMMITTEE)

R. J. Cepluch, <i>Chairman</i>	C. E. Ford
W. R. Mikesell, <i>Vice Chairman</i>	B. D. Hackney
G. M. Eisenberg, <i>Secretary</i>	E. C. Kistner, Jr.
R. J. Bosnak	H. A. Manning
L. J. Chockie	D. J. McDonald
J. R. Farr	R. F. Reedy

HONORARY MEMBERS (MAIN COMMITTEE)

J. D. Andrew, Jr.	E. L. Kemmler
R. D. Bonner	E. M. Kloebler
P. M. Brister	J. E. Lattan
H. M. Canavan	J. LeCoff
J. S. Clarke	F. N. Moschini
W. E. Cooper	C. E. Rawlins
G. E. Fratcher	W. R. Smith, Sr.
R. M. Gibson	W. E. Somers
R. C. Griffin	D. B. Weststrom
W. L. Harding	F. S. G. Williams
E. J. Hemzy	L. P. Zick

MARINE CONFERENCE GROUP

J. Tiratto, <i>Chairman</i>	G. C. Johnson
C. F. Banks	E. F. Murphy
V. W. Bugg	

CONFERENCE COMMITTEE

M. L. Snow, Jr. — Tennessee <i>(Chairman)</i>	J. T. Little — Arizona
D. J. McDonald — National Board of Boiler and Pressure Vessel Inspectors <i>(Secretary)</i>	B. M. Lovelady — Memphis and Shelby County, Tennessee
D. C. Barnett, Jr. — Florida	C. C. Mann — New Orleans, Louisiana
D. E. Beaner — Pennsylvania	R. J. Mannion — New Hampshire
G. Black — Washington	S. M. Matthews — Texas
V. Bogosian — Illinois	I. W. Mault — Manitoba, Canada
E. Brandt — Los Angeles, California	H. T. McEwen — Mississippi
J. E. Brennan — Ohio	A. W. Meiring — Indiana
W. E. Brown — Kansas	E. E. Morgan — Colorado
N. B. Burkheimer — Maryland	J. W. Morvant — Louisiana
R. D. Cather — Alaska	R. F. Mullaney — Vancouver, Canada
A. Colvin, Jr. — Washington, D.C.	D. Newquist — Nebraska
R. A. Coomes — Kentucky	R. D. O'Connor — Connecticut
Z. C. Cordero — Michigan	H. Parker, Jr. — Nevada
J. G. Cvar — Delaware	J. C. Parsell — Utah
A. W. Diamond — Newfoundland, Canada	R. D. Reetz — North Dakota
M. H. Diehl, Jr. — Maryland	R. Sauve — Quebec, Canada
F. G. Dolen — New Jersey	M. Shuff — West Virginia
C. R. Erickson — California	J. L. Smith — Alberta, Canada
E. Everett — Georgia	R. P. Sullivan — Maine
J. J. Fowles — New Brunswick, Canada	N. Surtees — Saskatchewan, Canada
J. W. Greenawalt, Jr. — Oklahoma	C. W. Thompson — Arkansas
S. L. Hall — North Carolina	M. W. A. West — Prince Edward Island, Canada
V. Harding — Hawaii	R. B. West — Iowa
J. Hicks — Virginia	M. J. Wheel — Vermont
C. Hinson — Oregon	R. K. White — New York
J. D. Hoh — Missouri	T. F. Wickham — Rhode Island
W. J. Holmes — Chicago, Illinois	H. J. Wright — Ontario, Canada
R. M. Johnson — California	R. A. Yeo — Nova Scotia, Canada
A. Justin — Minnesota	
V. Kanable — Wisconsin	
G. M. Kuetemeyer — Milwaukee, Wisconsin	

SUBCOMMITTEE ON POWER BOILERS (SC I)

E. C. Kistner, Jr., <i>Chairman</i>	W. T. Higginbotham
J. R. MacKay, <i>Vice Chairman</i>	R. Leone
M. E. Sheehan, <i>Secretary</i>	W. L. Lowry, Jr.
S. G. Bankar	R. F. Manning
D. L. Berger	M. Mattina
M. D. Bernstein	R. G. Presnak
D. A. Canonico	R. D. Schueler, Jr.
A. R. Faulkner	R. L. Williams
D. N. French	R. A. Yeo
F. R. Gerety	L. W. Yoder

Subgroup on Care of Power Boilers (SC I)

W. T. Higginbotham, <i>Chairman</i>	C. R. Hoefs
C. J. Berg	E. A. Holden
H. F. Dobel	E. C. Kistner, Jr.
D. O. Downey	D. J. McDonald
W. Hall	R. A. Yeo
R. R. Hess	J. R. Zahorsky

Subgroup on Piping (SC I)

R. L. Williams, <i>Chairman</i>	R. R. Hess
F. R. Gerety, <i>Secretary</i>	W. L. Lowry, Jr.
D. L. Berger	T. C. McGough
M. D. Bernstein	R. G. Presnak
A. J. Breugelmanns	L. J. Sas
A. R. Faulkner	L. W. Yoder
W. Hall	

Subgroup on Design (SC I)

R. D. Schueler, Jr., <i>Chairman</i>	R. Leone
R. F. Manning, <i>Vice Chairman</i>	K. C. Morrison
R. V. Wielgoszinski, <i>Secretary</i>	A. Nassif
M. D. Bernstein	D. R. Palmer
M. A. Farrugia	C. H. Walters
W. R. Hankins	R. A. Yeo
G. L. Kasparian	

Subgroup on Materials (SC I)

A. R. Faulkner, <i>Chairman</i>	D. N. French
S. G. Bankar	J. S. Hunter
D. A. Canonico	J. M. Tanzosh

Subgroup on General Requirements (SC I)

M. D. Bernstein, <i>Chairman</i>	J. T. Pillow
F. R. Gerety, <i>Secretary</i>	W. E. Somers
R. R. Hess	C. H. Walters
R. Leone	R. L. Williams
W. L. Lowry, Jr.	R. A. Yeo
T. C. McGough	L. W. Yoder

Subgroup on Fabrication and Examination (SC I)

R. Leone, <i>Chairman</i>	W. T. Higginbotham
D. L. Berger, <i>Secretary</i>	J. S. Kandola
S. G. Bankar	J. T. Pillow
D. N. French	R. D. Schueler, Jr.
J. Hainsworth	R. V. Wielgoszinski
W. Hall	

SUBCOMMITTEE ON MATERIALS SPECIFICATIONS (SC II)

J. P. Millman, <i>Secretary</i>	R. A. Moen
A. Cohen	E. G. Nisbett
W. D. Edsall	W. R. Sylvester
M. Gold	J. W. Tackett
G. C. Hsu	E. O. Woolridge
E. I. Landerman	A. W. Zeuthen
W. A. McRoberts	

Subgroup on Steel Plates (SC II)

A. W. Zeuthen, <i>Chairman</i>	R. P. Slimmon
W. D. Edsall	J. M. Tanzosh
J. F. Longenecker	E. O. Woolridge

Subgroup on Steel Tubular Products (SC II)

W. R. Sylvester, <i>Chairman</i>	R. P. Meineke
E. A. Jonas	E. J. Rozic, Jr.
W. C. Mack	R. H. Zong

Subgroup on Steel Castings, Forgings, and Boltings (SC II)

E. G. Nisbett, <i>Chairman</i>	E. I. Landerman
R. F. Cappellini	W. A. McRoberts
B. M. Dingman	E. O. Woolridge
T. Graham	

Subgroup on Nonferrous Alloys (SC II)

G. C. Hsu, <i>Chairman</i>	W. R. Keaney
J. W. Tackett, <i>Secretary</i>	A. P. Seidler
A. Cohen	R. T. Webster
B. B. Hood	M. J. Weiss

SUBCOMMITTEE ON NUCLEAR POWER (SC III)

R. F. Reedy, <i>Chairman</i>	W. C. Ham
E. F. Gerwin, <i>Vice Chairman</i>	W. G. Knecht
K. Ennis, <i>Secretary</i>	D. F. Landers
J. R. Barbee	J. Lang
R. W. Barnes	H. A. Manning
R. J. Bosnak	W. N. McLean
E. B. Branch	C. A. Moore
M. N. Bressler	T. E. Northup
L. J. Chockie	W. R. Smith, Sr.
J. B. Christofferson	M. F. Sullivan
R. L. Dick	R. P. Sullivan
H. F. Dobel	S. W. Tagart, Jr.
W. D. Doty	R. E. Tome
F. R. Drahos	

Subgroup on General Requirements (SC III & 3C)

H. F. Dobel, <i>Co-Chairman</i>	M. J. Meyer
J. R. Barbee	A. J. Moellenbeck
R. B. Bremmer	R. E. Muise
E. F. Gerwin	L. C. Oakes
K. R. Hooks	M. F. Sullivan
R. D. Kulchak	R. P. Sullivan
M. Malloy	G. M. Tolson

Special Working Group on Dynamic Analysis (SG-D) (SC III)

R. Wray, <i>Chairman</i>	A. E. Meligi
M. K. Au-Yang	B. J. Mitchel
R. D. Blevins	T. M. Mulcahy
G. J. Bohm	S. W. Tagart, Jr.
P.-Y. Chen	J. N. Underwood
A. H. Hadjian	J. Wallach

Working Group on Quality Assurance (SG-GR) (SC III & 3C)

R. D. Kulchak, <i>Co-Chairman</i>	J. D. Lenardson
R. C. Arthurs	M. J. Meyer
J. N. Babcock, Jr.	R. E. Muise
J. R. Barbee	G. C. Pratt
J. V. Bosco	R. Siever
R. B. Bremmer	S. A. Sparacino
B. W. Burak	J. F. Strunk
J. G. Harkness	M. F. Sullivan
K. R. Hooks	G. M. Tolson

Special Working Group on Faulted Conditions (SG-D) (SC III)

G. J. Bohm, <i>Chairman</i>	D. P. Munson
P. L. Anderson	P. R. Olson
C. W. Bruny	R. F. Perry
G. Bushnell	W. Pink
M. Hartzman	J. Wallach

Working Group on Duties and Responsibilities (SG-GR) (SC III & 3C)

A. J. Moellenbeck, <i>Chairman</i>	A. S. Laurenson
J. E. Ayotte	J. R. Luke
J. E. Crowe	B. D. Rall
A. C. Eberhardt	R. T. Rose
R. C. Howard	W. K. Sowder
D. R. Kulla	R. E. Weber

Working Group on Vessels (SG-D) (SC III)

G. D. Cooper, <i>Chairman</i>	R. W. Mikitka
C. W. Bruny	C. A. Moore
N. W. Edwards	P. P. Raju
J. F. Finn, Jr.	H. S. Thornton
F. P. Hill, Jr.	R. E. Tome
A. Merend	A. Walsenko

Working Group on Data Report Forms (SG-GR) (SC III & 3C)

R. E. Muise, <i>Chairman</i>	B. W. Burak
C. W. Allison	W. K. Sowder
R. C. Arthurs	M. F. Sullivan
J. N. Babcock, Jr.	

Working Group on Piping (SG-D) (SC III)

G. C. Slagis, <i>Chairman</i>	D. F. Landers
S. Gils	S. E. Moore
A. B. Glickstein	E. D. Mysinger
D. J. Guzy	E. C. Rodabaugh
R. W. Haupt	M. S. Sills
R. S. Hill III	E. O. Swain
R. B. Jenkins	L. E. Wright
M. Z. Khlafallah	M. P. Zyne
G. T. Kitz	

Subgroup on Materials, Fabrication, and Examination (SC III)

W. G. Knecht, <i>Chairman</i>	W. N. McLean
C. W. Allison	W. A. McRoberts
W. H. Borter	R. A. Moen
B. G. Carlton	K. E. Moore
F. R. Drahos	D. A. Olsson
G. B. Georgiev	C. J. Pieper
E. F. Gerwin	R. E. Schuessler
R. M. Hanschka	H. A. Sepp, Jr.
J. E. Harris	N. M. Simpson
R. W. Jackson	W. J. Sperko
R. M. Jessee	A. Taboada
E. I. Landerman	R. E. Tschirch
J. Lang	E. H. Williams
J. F. Longenecker	

Working Group on Pumps (SG-D) (SC III)

D. B. Nickerson, <i>Chairman</i>	D. R. Hyatt
C. S. Boster	D. M. Kitch
H. L. Brammer	P. J. Nagengast
R. B. Camper	J. J. Ranft
F. P. Colon	H. Tafarrodi
D. L. Cummings	J. H. Wawrzoniak

Subgroup on Design (SC III)

C. A. Moore, <i>Chairman</i>	D. F. Landers
R. W. Barnes, <i>Secretary</i>	W. N. McLean
E. B. Branch	R. W. Mikitka
M. N. Bressler	E. C. Rodabaugh
W. G. Brussalis, Jr.	B. L. Silverblatt
G. D. Cooper	G. C. Slagis
N. W. Edwards	J. D. Stevenson
W. F. English, Jr.	J. H. Wawrzoniak
F. P. Hill, Jr.	K. R. Wichman

Working Group on Valves (SG-D) (SC III)

W. N. McLean, <i>Chairman</i>	J. J. McGavin
R. R. Brodin	H. R. Sonderegger
J. M. Cowley	J. C. Tsacoyeanes
R. J. Kiessel	R. G. Visalli
W. G. Knecht	J. R. Zahorsky
R. Koester	

Working Group on Component Supports (SG-D) (SC III)

M. N. Bressler, <i>Chairman</i>	R. J. Masterson
J. M. Benenati	A. E. Meligi
R. D. Ciatto	E. D. Mysinger
J. R. Cole	A. Nguyen
R. P. Deubler	H. Noreen, Jr.
R. W. Haupt	G. M. Quinn
H. T. H. Hui	C. L. Ray, Jr.
T. Karppinen	H. K. Shaw
Z. A. Kravets	E. O. Swain
T. C. LaCroix	M. P. Zyne
A. S. Laurensen	

Working Group on Core Support Structures (SG-D) (SC III)

B. L. Silverblatt, <i>Chairman</i>	J. F. Mullooly
T. Vetter, Jr., <i>Secretary</i>	E. Steinkamp
W. F. English, Jr.	

Working Group on FRP Pipe (SG-D) (SC III)

L. Loziuk, <i>Chairman</i>	A. B. Glickstein
F. R. Gerety	

Subgroup on Pressure Relief (SC III)

F. C. Cherny, <i>Chairman</i>	S. F. Harrison, Jr.
R. A. Cedel	H. Honig
J. J. Chappell	K. Ijzerman
R. J. Doelling	D. Kadakia
W. D. Greenlaw	D. M. Pattarini

Subgroup on Elevated Temperature Construction (SC III)

A. W. Dalcher, <i>Chairman</i>	M. T. Jakub
J. M. Tanzosh, <i>Secretary</i>	R. M. Mello
C. C. Bigelow	V. Regis

Subgroup on Containment Systems for Spent Fuel and High Level Waste Transport Packagings (SC III)

E. F. Gerwin, <i>Chairman</i>	J. V. Massey
K. B. Sorenson, <i>Secretary</i>	R. E. Nickell
W. H. Brinkman	W. H. Rogers, Jr.
H. H. Chung	J. Santucci
K. Goldmann	W. W. Teper
R. T. Haelsig	T. C. Thompson
B. B. Hood	C. H. Walters
R. H. Jones	S. Yukawa
R. W. Lambert	

Working Group on General Requirements (SG-NUPACK) (SC III)

K. Goldmann, <i>Chairman</i>	D. L. Tevis
J. V. Massey	

Working Group on Material (SG-NUPACK) (SC III)

S. Yukawa, <i>Chairman</i>	J. G. Merkle
T. J. Griesbach	M. W. Schwartz
B. B. Hood	F. A. Simonen
J. T. Martin	K. B. Sorrenson
P. McConnell	M. P. Walsh

Working Group on Design (SG-NUPACK) (SC III)

D. G. Abbott	W. W. Teper
M. E. Balmert	T. C. Thompson
A. G. Eggers	H. H. Woo
R. E. Nickell	

Working Group on Fabrication and Examination (SG-NUPACK) (SC III)

W. H. Brinkman, *Chairman*

JOINT ACI-ASME COMMITTEE ON CONCRETE COMPONENTS FOR NUCLEAR SERVICE (SC-3C)

J. P. Allen III, <i>Chairman</i>	R. D. Kulchak
J. Karian, <i>Secretary</i>	D. Marano
J. F. Artuso	D. P. Moore
R. M. Attar	R. G. Oesterle
T. M. Brown	F. Rinaldi
B. A. Erler	B. B. Scott
D. J. Haavik	C. P. Siess
T. E. Johnson	J. D. Stevenson
F. W. Joyce	R. N. White

Subgroup on Materials, Construction, and Examination (SC-3C)

D. J. Haavik, <i>Chairman</i>	J. Gutierrez
J. P. Allen III	F. W. Joyce
J. F. Artuso	D. Marano
R. M. Attar	D. P. Moore
J. E. Barry	G. R. Murphy
J. F. Best	H. Nierlich
S. Bhuyan	L. C. Noriega
G. L. Fisher	S. K. Sen
C. L. Grover	

Working Group on Concrete Inspectors Qualifications (SG-M, C, & E) (SC-3C)

F. W. Joyce, <i>Chairman</i>	R. J. Vurpillat
J. F. Artuso	R. E. Wilson
C. E. Jaycox	

Subgroup on Design (SC-3C)

B. B. Scott, <i>Chairman</i>	F. S. Ople, Jr.
T. M. Brown	F. Rinaldi
L. I. Cheng	R. E. Shewmaker
J. F. Fulton	J. D. Stevenson
T. E. Johnson	A. Walser
R. G. Oesterle	M. J. Holley, Jr., Observer

Working Group on Testing and Protection Against Overpressure (SG-D) (SC-3C)

T. M. Brown, <i>Chairman</i>	H. T. Hill
S. Guha-Majumdar	N. J. Tuholski

Subgroup on Core Support Structures (SC-3C)

R. Vollman	G. T. Yahr
------------	------------

SUBCOMMITTEE ON HEATING BOILERS (SC IV)

T. H. Milton, <i>Chairman</i>	M. Mattina
F. P. Barton, <i>Vice Chairman</i>	K. McTague
K. I. Baron, <i>Secretary</i>	R. I. Mullican
J. E. Ayotte	E. A. Nordstrom
R. B. Duggan	S. V. Voorhees
G. E. Fratcher	C. H. Walters
J. W. Greenawalt, Jr.	R. H. Weigel
W. L. Haag	J. I. Woodworth
G. L. Kasparian	

Subgroup on Care and Operation of Heating Boilers (SC IV)

J. I. Woodworth, <i>Chairman</i>	W. D. Hayen
F. P. Barton	K. McTague
W. H. Dormer, Jr.	R. H. Weigel
J. Giambrone	

Subgroup on Water Heaters (SC IV)

G. E. Fratcher, <i>Chairman</i>	G. R. Lewis
F. P. Barton	K. McTague
W. L. Garvin	E. A. Nordstrom
J. W. Greenawalt, Jr.	C. W. Staats
W. L. Haag	K. J. Szigety
B. Klinke	E. Wenczl

Subgroup on Cast Iron Boilers (SC IV)

K. McTague, <i>Chairman</i>	R. H. Weigel
R. B. Duggan	J. I. Woodworth
W. L. Garvin	

SUBCOMMITTEE ON NONDESTRUCTIVE EXAMINATION (SC V)

J. R. MacKay, <i>Chairman</i>	G. W. Hembree
R. C. Hudson, <i>Vice Chairman</i>	P. J. Herbert
G. P. Mancini, <i>Secretary</i>	E. T. Hughes
A. S. Birks	B. C. Jersild
J. B. Christofferson	R. M. Jessee
B. H. Clark, Jr.	F. B. Kovacs
J. G. Cvar	S. Markowitz
L. T. Detlor	T. G. McCarty
B. E. Foster	W. C. McGaughey
H. C. Graber	J. P. Sunukjian
O. F. Hedden	D. A. White

Subgroup on Radiography (SC V)

T. G. McCarty, <i>Chairman</i>	B. C. Jersild
W. L. Bierwirth	C. Johnson
L. T. Detlor	F. B. Kovacs
B. E. Foster	S. Markowitz

Subgroup on Ultrasonics (SC V)

P. J. Herbert, <i>Chairman</i>	R. W. McClung
N. O. Cross	W. C. McGaughey
O. F. Hedden	R. Paillaman
W. T. Higginbotham	F. J. Sattler
E. T. Hughes	J. C. Spanner, Sr.
J. F. Manning	F. R. A. Turner

Subgroup on Acoustic Emission (SC V)

D. A. White, <i>Chairman</i>	J. F. Manning
B. H. Clark, Jr.	J. R. Mitchell
N. O. Cross	J. M. Nieters
P. M. Horrigan	J. C. Spanner, Sr.

Subgroup on General Requirements and Surface Examination (SC V)

H. C. Graber, <i>Chairman</i>	B. H. Clark, Jr.
A. S. Birks	J. G. Cvar
W. G. Blankenship	R. M. Jessee
A. S. Britton	L. C. Ludwig
J. O. Brown	R. McGuire
J. B. Christofferson	J. P. Sunukjian

SUBCOMMITTEE ON PRESSURE VESSELS (SC VIII)

J. R. Farr, <i>Chairman</i>	R. W. Mikitka
R. J. Cepluch, <i>Vice Chairman</i>	U. R. Miller
A. J. Roby, <i>Secretary</i>	E. E. Morgeneegg
A. P. Ahrendt	C. C. Neely
J. O. Brown	R. F. O'Neill
S. M. Caldwell	F. O. Parnkopf
W. J. Carter	A. Selz
S. C. Cyr	A. M. Smolen
R. E. Feigel	D. A. Staskelunas
G. E. Fratcher	E. A. Steen
W. L. Garvin	J. J. Szigety
B. D. Hackney	J. W. Tackett
H. L. Hime	K. K. Tam
M. H. Jawad	E. L. Thomas, Jr.
G. G. Karcher	J. S. Brzuszkiewicz, Staff Representative
J. LeCoff	
S. M. Matthews	

Special Working Group on Heat Transfer Equipment (SC VIII)

J. H. Kissel, <i>Chairman</i>	G. G. Karcher
U. R. Miller, <i>Vice Chairman</i>	A. Lohmeier
H. A. Schmidt, Jr., <i>Secretary</i>	A. P. Rochino
C. F. Andreone	J. E. Soehrens
D. E. Bolt	A. I. Soler
G. Borushko	W. A. Treff
S. M. Caldwell	S. Yokell
T. K. Haldas	

Special Working Group on High Pressure Vessels (SC VIII)

J. R. Sims, Jr., <i>Chairman</i>	G. J. Mraz
M. E. Sheehan, <i>Secretary</i>	E. G. Nisbett
D. J. Burns	L. Ohlsson
C. M. Elwonger	E. R. Sliwinski
R. G. Fasiczka	A. M. Smolen
R. E. Feigel	J. F. Sullivan
D. M. Fryer	F. W. Tatar
J. F. Harvey	D. A. Wells
D. P. Kendall	

Subgroup on General Requirements (SC VIII)

C. C. Neely, <i>Chairman</i>	P. M. Nightengale
R. E. Tillberg, <i>Secretary</i>	A. S. Olivares
A. P. Ahrendt	A. M. Smolen
W. J. Carter	A. J. Spencer
W. L. Garvin	D. A. Staskelunas
C. R. Good	E. A. Steen
S. M. Matthews	W. J. Stuber

Subgroup on Materials (SC VIII)

J. W. Tackett, <i>Chairman</i>	E. G. Nisbett
H. L. Hime, <i>Secretary</i>	D. W. Rahoi
W. D. Doty	K. K. Tam
J. Hainsworth	D. A. Wells
J. D. McLoughlin	

Subgroup on Design (SC VIII)

R. F. O'Neill, <i>Chairman</i>	R. W. Mikitka
R. E. Knoblock, <i>Secretary</i>	U. R. Miller
M. R. Bauman	K. Mokhtarian
J. R. Farr	A. Selz
J. A. Hayward	J. W. Stokes
J. L. Jacobowitz	K. K. Tam
M. H. Jawad	E. L. Thomas, Jr.
G. G. Karcher	

Working Group on Noncircular Vessels (SG-D) (SC VIII)

A. Selz, <i>Chairman</i>	A. M. Smolen
G. Ganeshan	B. K. Thakur
H. E. Gordon	E. L. Thomas, Jr.
P. M. Nightengale	J. L. Urner
R. K. Rothenbacher	S. V. Voorhees
K. V. Shipps	

Subgroup on Fabrication and Inspection (SC VIII)

J. O. Brown, <i>Chairman</i>	M. J. Houle
R. F. O'Neill, <i>Secretary</i>	H. Lewis, Jr.
G. Bibel	F. O. Parnkopf
R. W. Boyce	H. C. Rauschenplat
S. C. Cyr	R. E. Schuessler
R. E. Feigel	J. J. Szigety
H. B. France	R. F. Wagner

Working Group on Layered Vessels (SGFI) (SC VIII)

F. O. Parnkopf, <i>Chairman</i>	J. L. Jacobowitz
A. M. Smolen, <i>Secretary</i>	H. C. Rauschenplat
S. M. Caldwell	M. A. Tracy
G. E. Fratcher	

SUBCOMMITTEE ON WELDING (SC IX)

B. D. Hackney, <i>Chairman</i>	B. R. Newmark
R. K. Sager, <i>Vice Chairman</i>	P. P. Norris
P. D. Stumpf, <i>Secretary</i>	S. D. Reynolds, Jr.
B. L. Alia	B. S. Russell
M. L. Carpenter	W. K. Scattergood
H. R. W. Cobb	J. L. Smith
H. R. Conaway	W. J. Sperko
W. D. Doty	G. W. Spohn III
J. G. Feldstein	D. J. Stull
P. D. Flenner	K. C. Taber
M. J. Houle	D. L. Tevis
R. A. LaPointe	R. R. Young
R. E. Lorentz, Jr.	J. B. Christofferson, <i>Alternate</i>
R. P. Meineke	W. J. Wagner, <i>Alternate</i>
A. H. Miller	

Subgroup on Materials (SC IX)

R. E. Lorentz, Jr., <i>Chairman</i>	R. K. Sager
M. L. Carpenter	C. E. Spaeder
H. R. Conaway	W. J. Sperko
M. V. Davis	K. C. Taber
P. D. Flenner	J. W. Tackett
R. M. Jessee	R. R. Young
A. H. Miller	

Subgroup on General Requirements (SC IX)

B. R. Newmark, <i>Chairman</i>	J. L. Smith
M. V. Davis	A. J. Spencer
R. M. Jessee	K. C. Taber
R. P. Meineke	C. E. Wainwright
A. S. Olivares	

Subgroup on Procedure Qualification (SC IX)

M. J. Houle, <i>Chairman</i>	A. H. Miller
B. L. Alia	S. D. Reynolds, Jr.
R. K. Brown, Jr.	D. E. Smith
H. R. W. Cobb	W. J. Sperko
J. G. Feldstein	

Subgroup on Performance Qualification (SC IX)

M. J. Houle, <i>Chairman</i>	P. P. Norris
D. A. Bowers, Jr.	W. K. Scattergood
J. B. Christofferson	G. W. Spohn III
P. D. Flenner	D. L. Tevis
R. A. LaPointe	W. J. Wagner

Subgroup on Brazing (SC IX)

M. L. Carpenter, <i>Chairman</i>	A. H. Miller
R. A. LaPointe	J. Serre

SUBCOMMITTEE ON REINFORCED PLASTIC PRESSURE VESSELS (SC X)

D. M. Bertelsman, <i>Chairman</i>	L. E. Hunt
J. Yarmush, <i>Secretary</i>	W. J. Johns
D. H. Barton	J. A. Kidd
J. H. Bouchard	F. R. Pflederer
L. C. Daniels	J. A. Rolston
T. J. Fowler	A. I. Snyder
S. V. Hoa	C. H. Walters

**SUBCOMMITTEE ON NUCLEAR INSERVICE INSPECTION
(SC XI)**

S. H. Bush, <i>Chairman</i>	R. C. Howard
K. I. Baron, <i>Secretary</i>	L. R. Katz
C. W. Allison	R. D. Kerr
W. F. Anderson	J. J. Lance
A. C. Ashton	J. Matte III
W. H. Bamford	T. J. Mawson
R. L. Beverly	G. C. Millman
A. J. Birkle	R. E. Muise
L. J. Chockie	T. G. Parker
D. C. Cowfer	G. J. Pitzl
M. J. Crisler	R. L. Powers
D. D. Davis	P. C. Riccardella
E. A. DeBarba	R. F. Sammataro
A. M. DiBiasio	M. L. Snow, Jr.
F. E. Gregor	R. W. Swayne
L. B. Gross	R. J. Tamminga
R. H. Hansen	J. C. Tobin
O. F. Hedden	S. D. Weinman, Staff Representative
H. T. Hill	
J. P. Houstrup	

Special Working Group on Plant Life Extension (SC XI)

L. R. Katz, <i>Chairman</i>	J. T. McCumber
L. B. Gross, <i>Secretary</i>	H. McShane
T. L. Bailey	E. A. Merrick
A. J. Birkle	D. R. Payne
L. D. Bustard	D. A. Piccione
D. D. Davis	D. Sattar
T. M. Erwin	W. B. Scott
W. L. Garvin	V. N. Shah
F. E. Gregor	E. A. Siegel
B. Gutherman	P. P. Stancavage
D. L. Harrison	A. Taboada
D. R. Hostetler	R. J. Tamminga
J. P. Houstrup	L. B. Tittle
R. C. Howard	S. A. Traiforos
M. E. Lapidés	

Special Working Group on Core Supports (SC XI)

J. C. Tobin, <i>Chairman</i>	J. J. Lance
H. Behnke	R. A. Moen
S. Chandra	J. F. Mullooly
R. M. Gribble	B. L. Silverblatt
E. T. Ishizaka	E. Steinkamp

Special Working Group on Pipe Wall Thinning (SC XI)

S. H. Bush, <i>Chairman</i>	P. C. Riccardella
V. K. Chexal	J. C. Rivers
T. N. Epps III	J. C. Spanner, Jr.
T. L. Gerber	A. Taboada
J. P. Houstrup	R. J. Tamminga
D. S. Kerr	P. C. S. Woo

Special Working Group on Pressure Testing (SC XI)

R. C. Howard, <i>Chairman</i>	C. E. Jensen
M. P. Lintz, <i>Secretary</i>	S. Ranganath
E. D. Crane	F. J. Schaaf, Jr.
R. M. Gamble	J. H. Uhl
S. R. Gosselin	R. A. Yonekawa

Special Working Group on Editing and Review (SC XI)

R. L. Beverly, <i>Chairman</i>	M. P. Lintz
A. L. Bradshaw	J. E. Staffiera
L. B. Gross	R. W. Swayne
V. H. Hight	

Subgroup on Water-Cooled Systems (SC XI)

A. J. Birkle, <i>Chairman</i>	G. C. Millman
T. F. Lentz, <i>Secretary</i>	C. V. Moore
C. W. Allison	R. L. Powers
W. F. Anderson	L. Sage
A. C. Ashton	M. L. Snow, Jr.
D. D. Davis	R. J. Tamminga
L. B. Gross	F. Tehranchi
T. C. Hinkle	D. L. Tevis
C. E. Jensen	J. H. Uhl
L. R. Katz	G. Wasilenko
R. E. Legate	

Working Group on Component Supports (SG-WCS) (SC XI)

D. D. Davis, <i>Chairman</i>	L. F. Lake
E. Beffa	G. C. Millman
G. L. Belew	R. L. Powers
G. A. Delp	R. F. Tegethoff
G. P. Knippel	M. P. Zyne
C. N. Krishnaswamy	

Working Group on General Requirements (SG-WCS) (SC XI)

R. J. Tamminga, <i>Chairman</i>	L. B. Gross
T. M. Zwick, <i>Secretary</i>	R. H. Hansen
W. F. Anderson	C. E. Hartz
R. G. Edl	R. K. Mattu
J. C. Goulart	D. L. Tevis
D. A. Graham	

Working Group on Pumps and Valves (SG-WCS) (SC XI)

C. E. Jensen, <i>Chairman</i>	W. C. Holston
M. P. Lintz, <i>Secretary</i>	R. K. Mattu
A. Cardillo	D. R. Payne
F. C. Cherny	L. Sage
C. E. Hartz	E. V. Werry

**Working Group on Inspection of Systems and Components
(SG-WCS) (SC XI)**

L. Sage, <i>Chairman</i>	A. A. Koehl
J. C. Rivers, <i>Secretary</i>	T. F. Lentz
A. C. Ashton	M. P. Lintz
E. D. Crane	W. B. Scott
D. A. Gallino	F. Tehranchi
T. C. Hinkle	J. H. Uhl
M. R. Hum	R. J. Von Osinski
C. E. Jensen	

Subgroup on Gas-Cooled Systems (SC XI)

R. H. Hansen, *Chairman*

Subgroup on Liquid-Metal Cooled Systems (SC XI)

J. Matte III, <i>Chairman</i>	L. R. Monson
C. G. McCarger, <i>Secretary</i>	L. J. Nemeth
W. L. Chase	W. J. Rowan
S. Hattori	G. Seed
R. Hundal	J. C. Tobin
H. C. Jung	T. J. Walker
E. Larson	

Working Group on Liquid-Metal Reactor Covers (SG-LMCS) (SC XI)

W. L. Chase, <i>Chairman</i>	E. Larson
L. J. Nemeth, <i>Secretary</i>	J. Matte III
S. Hattori	G. Seed
R. Hundal	

Subgroup on Containment (SC XI)

R. F. Sammataro, <i>Chairman</i>	D. R. Pitcairn
J. E. Staffiera, <i>Secretary</i>	C. G. Ranganath
W. J. Briggs	A. J. Spencer
K. K. N. Chao	J. F. Strunk
N. W. Edwards	P. W. Ward
F. E. Gregor	R. N. Watson
H. T. Hill	K. R. Wichman

Working Group on Concrete Pressure Components (SG-C) (SC XI)

H. T. Hill, <i>Chairman</i>	J. F. Fulton
W. J. Briggs, <i>Secretary</i>	S. Guha-Majumdar
H. G. Ashar	C. N. Krishnaswamy
T. L. Bradley	C. G. Ranganath
C. A. Byrd	A. M. Salley
K. K. N. Chao	P. W. Ward

Subgroup on Evaluation Standards (SC XI)

W. H. Bamford, <i>Chairman</i>	D. M. Norris
J. P. Houstrup, <i>Secretary</i>	S. Ranganath
C. Y. Cheng	P. C. Riccardella
R. C. Cipolla	W. L. Server
T. J. Griesbach	W. A. Van Der Sluys
K. Iida	K. K. Yoon
R. E. Johnson	S. Yukawa
M. Kupinski	

Working Group on Operating Plant Criteria (SG-ES) (SC XI)

T. J. Griesbach, <i>Chairman</i>	M. Kupinski
R. M. Gamble, <i>Secretary</i>	S. D. Leshnoff
A. S. Amar	R. M. Pace
W. F. Anderson	A. G. Panagos
W. H. Bamford	J. S. Panesar
H. Behnke	J. H. Phillips
A. F. Billy	S. W. Pullins
J. M. Bloom	P. N. Randall
R. C. Cipolla	S. Ranganath
W. C. Cliff	W. L. Server
E. Friedman	V. N. Shah
R. B. Ganta	E. A. Siegel
S. R. Gosselin	F. A. Simonen
J. P. Houstrup	G. M. Wilkowski
K. Ijzerman	K. K. Yoon
R. E. Johnson	S. Yukawa

Working Group on Flaw Evaluation (SG-ES) (SC XI)

R. C. Cipolla, <i>Chairman</i>	D. M. Norris
J. M. Bloom, <i>Secretary</i>	J. S. Panesar
A. S. Amar	P. C. Paris
W. H. Bamford	P. P. Raju
M. Basol	S. Ranganath
C. Y. Cheng	W. L. Server
N. W. Edwards	F. A. Simonen
E. Friedman	G. M. Wilkowski
T. J. Griesbach	J. E. Wilson
J. P. Houstrup	K. K. Yoon
K. Iida	S. Yukawa
M. Kupinski	V. A. Zilberstein
J. G. Merkle	

Subgroup on Nondestructive Examination (SC XI)

E. A. DeBarba, <i>Chairman</i>	G. J. Dau
J. C. Spanner, Sr., <i>Secretary</i>	F. J. Dodd
D. C. Adamonis	M. R. Hum
R. L. Beverly	J. J. Lance
D. A. Brunner	C. R. Osman
C. B. Cheezem	T. G. Parker
J. F. Cook	R. J. Scott
D. C. Cowfer	J. C. Spanner, Jr.

Working Group on Procedure Qualification and Volumetric Examination (SG-NDE) (SC XI)

D. C. Cowfer, <i>Chairman</i>	O. DeMiranda
N. R. Bentley, <i>Secretary</i>	F. J. Dodd
D. C. Adamonis	R. Kellerhall
D. A. Brunner	J. J. Lance
C. B. Cheezem	J. Muscara
W. T. Clayton	M. J. Saporito
G. J. Dau	J. C. Spanner, Jr.
T. N. Epps III	T. T. Taylor

Working Group on Personnel Qualification and Surface Visual and Eddy Current Examination (SG-NDE) (SC XI)

J. F. Cook, <i>Chairman</i>	C. R. Osman
V. H. Hight, <i>Secretary</i>	J. M. Ray
J. E. Cavender, Jr.	R. J. Scott
D. R. Dadson	M. F. Sherwin
N. Economos	A. L. Smith
D. O. Henry	J. C. Spanner, Sr.
W. C. Koepke	

Special Working Group on Eddy Current Examination (SC XI)

D. O. Henry, <i>Chairman</i>	M. J. Gallagher
B. Curtis, <i>Secretary</i>	R. H. Ingraham
J. M. Benson	J. H. Kang
S. D. Brown	R. J. Kurtz
A. Curtis	R. E. Marlow
C. J. Denton	S. A. Redner
D. R. Dodson	D. D. Weber
R. H. Ferris	

Subgroup on Repairs and Replacements (SC XI)

T. J. Mawson, <i>Chairman</i>	R. D. Kerr
M. J. Crisler, <i>Secretary</i>	W. Kooy
E. T. Baker III	R. S. Lewis
J. D. Boardman	R. E. Muisse
B. W. Burak	D. R. Payne
J. Derrico	G. J. Pitzl
A. M. DiBiasio	R. R. Stevenson
W. L. Garvin	R. W. Swayne
R. E. Gimple	S. Tobey
O. F. Hedden	J. C. Tobin
R. C. Howard	A. J. Walcutt
E. T. Ishizaka	S. J. Walmsley
W. R. Johnson	R. A. Yonekawa
W. N. Keisler	

Working Group on Repairs (SG-RR) (SC XI)

J. Derrico, <i>Chairman</i>	W. N. Keisler
J. D. Boardman	R. D. Kerr
R. W. Boyce	D. R. Pitcairn
R. E. Cantrell	F. J. Schaaf, Jr.
R. F. Hollander	R. W. Swayne
E. T. Ishizaka	S. Tobey

Special Working Group on Repairs by Welding (SG-RR) (SC XI)

S. Tobey, <i>Chairman</i>	H. J. Kaplan
M. E. Reese, <i>Secretary</i>	R. A. LaPointe
C. Brookbank	W. E. Mayott
R. E. Cantrell	B. R. Newmark
B. R. Crowley	P. P. Norris
W. V. Gwaltney	D. L. Tevis
M. J. Houle	E. H. Williams
W. R. Johnson	

Working Group on Replacements (SG-RR) (SC XI)

A. M. Di Biasio, <i>Chairman</i>	W. Kooy
R. E. Gimple, <i>Secretary</i>	R. E. Legate
E. T. Baker III	G. J. Pitzl
C. E. Hartz	R. R. Stevenson
O. F. Hedden	A. J. Walcutt
W. C. Holston	R. A. Yonekawa
R. C. Howard	

SUBCOMMITTEE ON PROPERTIES OF METALS (SC-P)

D. A. Canonico, <i>Chairman</i>	F. Masuyama
J. P. Millman, <i>Secretary</i>	R. A. Moen
A. P. Ahrendt	R. K. Nanstad
T. M. Cullen	A. J. Palmer
W. D. Doty	D. W. Raho
A. R. Faulkner	B. W. Roberts
M. Gold	D. I. Roberts
D. G. Harman	C. E. Spaeder
S. O. Hilton	J. W. Tackett
E. T. Ishizaka	R. T. Webster

Subgroup on Strength, Ferrous Alloys (SC-P)

M. Gold, <i>Chairman</i>	S. O. Hilton
A. P. Ahrendt	J. F. Longenecker
D. A. Canonico	R. A. Moen
T. M. Cullen	D. W. Raho
R. M. Curran	B. W. Roberts
R. J. Diletto	D. I. Roberts
J. J. Heger	C. E. Spaeder

Subgroup on Strength, Nonferrous Alloys (SC-P)

R. T. Webster, <i>Chairman</i>	R. A. Rosenberg
M. H. Gilkey	E. Shapiro
B. B. Hood	L. E. Shoemaker
W. R. Keaney	J. W. Tackett

Subgroup on Strength of Weldments (SC-P) & (SC IX) (Joint Subgroup)

W. D. Doty, <i>Chairman</i>	D. I. Roberts
H. R. W. Cobb	R. K. Sager
B. W. Roberts	C. E. Spaeder

Subgroup on Toughness (SC-P)

R. K. Nanstad, <i>Chairman</i>	E. G. Nisbett
J. M. Barsom	A. Selz
R. F. Cappellini	I. Sprung
H. T. Corten	R. D. Stout
W. Hanzalek	M. F. Wheatcroft
W. S. Hazelton	S. Yukawa
E. I. Landerman	R. Zawierucha

Working Group on Nonnuclear Application (SG-T) (SC-P)

A. Selz, <i>Chairman</i>	M. F. Wheatcroft
E. G. Nisbett	R. Zawierucha
R. D. Stout	

Working Group on Nuclear Application (SG-T) (SC-P)

E. I. Landerman, <i>Chairman</i>	W. S. Hazelton
R. F. Cappellini	A. Selz

Working Group on Toughness Criteria (SG-T) (SC-P)

J. M. Barsom	S. Yukawa
R. K. Nanstad	

SUBCOMMITTEE ON SAFETY VALVE REQUIREMENTS (SC-SVR)

E. C. Kistner, Jr., <i>Chairman</i>	W. D. Greenlaw
W. L. Garvin, <i>Vice Chairman</i>	H. I. Gregg
C. J. Gomez, <i>Secretary</i>	S. F. Harrison, Jr.
G. C. Batz	W. D. Hayen
M. D. Bernstein	F. J. Howes
J. Cahoon, Jr.	M. A. Robinson
R. A. Cedel	A. J. Spencer
O. J. Cox, Jr.	L. L. Thompson
E. C. Cullie	F. W. Weidner
R. J. Doelling	

Subgroup on General Requirements (SC-SVR)

M. D. Bernstein, *Chairman* C. A. Neumann
W. D. Hayen M. A. Robinson
F. J. Howes L. L. Thompson
D. Kadakia

Subgroup on Testing (SC-SVR)

O. J. Cox, Jr., *Chairman* V. M. DeLuca
R. A. Cedel S. F. Harrison, Jr.
E. C. Cullie F. W. Weidner

Subgroup on Design (SC-SVR)

W. D. Greenlaw, *Chairman* R. J. Doelling
G. C. Batz H. I. Gregg
J. Cahoon, Jr. G. W. Neerbasch

SUBCOMMITTEE ON DESIGN (SC-D)

M. H. Jawad, *Chairman* O. F. Hedden
R. I. Jetter, *Vice Chairman* C. A. Moore
J. Yarmush, *Secretary* W. J. O'Donnell
T. K. Burr R. F. O'Neill
W. J. Carter R. D. Schueler, Jr.
J. R. Farr M. P. Schwartz

Subgroup on Openings (SC-D)

M. P. Schwartz, *Chairman* P. P. Raju
R. W. Mikitka, *Secretary* M. D. Rana
S. C. Lou E. C. Rodabaugh
R. B. Luney H. H. Schneider
K. Mokhtarian R. W. Schneider
K. C. Morrison H. K. Shaw
D. R. Palmer G. M. Tunnell, Jr.

Subgroup on External Pressure (SC-D)

W. J. Carter, *Chairman* W. J. Koves
D. J. Green H. W. Marsh
J. S. Kandola C. D. Miller

Subgroup on Design Analysis (SC-D)

T. K. Burr, *Chairman* T.-H. Liu
K. S. Ahluwalia A. Lohmeier
R. S. Barsoum T. V. Narayanan
S. Chattopadhyay S. S. Palusamy
C. Chen T. P. Pastor
A. G. Eggers M. W. Ringer, Jr.
H. M. Fishman E. R. Sliwinski
J. L. Hechmer E. L. Thomas, Jr.
A. Kalnins R. J. Thomas

Subgroup on Elevated Temperature Design (SC-D)

R. I. Jetter, *Chairman* R. K. Mattu
J. M. Corum, *Secretary* L. C. S. Nieh
C. R. Brinkman W. J. O'Donnell
R. D. Campbell D. I. Roberts
J. B. Conway C. C. Schultz, Jr.
A. W. Dalcher L. K. Severud
D. S. Griffin A. L. Snow
M. T. Jakub W. Veljovich
C. W. Lawton B. C. Wei
S. Majumdar

Subgroup on Fatigue Strength (SC-D)

W. J. O'Donnell, *Chairman* D. P. Jones
C. R. Brinkman D. W. Lawton
B. Gowda M. J. Manjoine
J. A. Hayward A. Merend
J. L. Hechmer G. C. Millman
L. A. James

**SUBCOMMITTEE ON BOILER AND PRESSURE VESSEL
ACCREDITATION (SC-BPVA)**

C. E. Ford, *Chairman* R. C. Howard
D. J. McDonald, *Vice
Chairman* D. S. Korzec
M. Gutierrez, *Secretary* T. H. Milton
G. P. Mancini, *Assistant
Secretary* E. F. Murphy
S. C. Cyr M. L. Snow, Jr.
D. M. Fischer J. M. Whelan
W. D. Greenlaw C. B. Zekas
J. R. Farr, *Alternate*

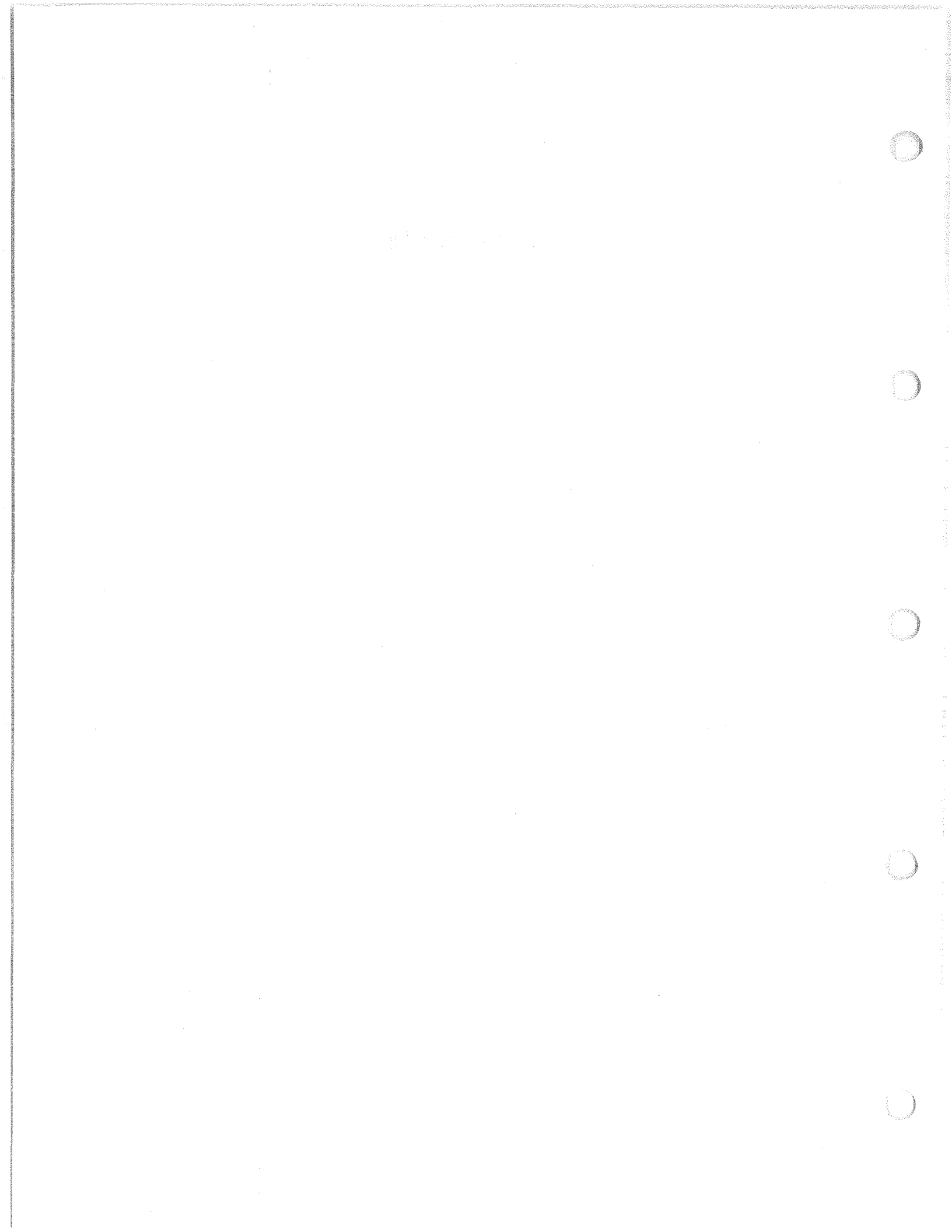
SUBCOMMITTEE ON NUCLEAR ACCREDITATION (SC-NA)

H. A. Manning, *Chairman* R. C. Howard
M. N. Bressler, *Vice Chairman* W. G. Knecht
A. Bagner, *Secretary* J. Lang
C. W. Allison J. D. Lenardson
E. T. Baker, III G. F. McDonald, Jr.
R. B. Bremmer R. E. Muise
D. J. Carreira T. E. Quaka
R. E. Feigel M. L. Snow, Jr.
J. E. Harris

CONTENTS

A Detailed Contents Precedes Each Part and Subpart, the Appendices,
and the Forms

Foreword	v
Statements of Policy	vii
Personnel	ix
Preamble	xxi
Part HG General Requirements for All Materials of Construction	1
Part HF Requirements for Boilers Constructed of Wrought Materials	69
Subpart HW — Requirements for Boilers Fabricated by Welding	87
Subpart HB — Requirements for Boilers Fabricated by Brazing	111
Part HC Requirements for Boilers Constructed of Cast Iron	121
Part HLW Requirements for Potable Water Heaters	137
Appendices	177
Guide to Manufacturers' Data Report Forms	205
SI Units	225
Index	229



PREAMBLE

The rules of this Section of the Code cover minimum construction requirements for the design, fabrication, installation, and inspection of steam heating, hot water heating, hot water supply boilers which are directly fired with oil, gas, electricity, coal, or other solid or liquid fuels, and for operation at or below the pressure and temperature limits set forth in this document. Similar rules for potable water heaters are also included.

For Section IV application, the boiler proper or other vessels terminate at:

- (a) the first circumferential joint for welding end connections;
 - (b) the face of the first flange in bolted flanged connections;
- or
- (c) the first threaded joint in that type of connection.

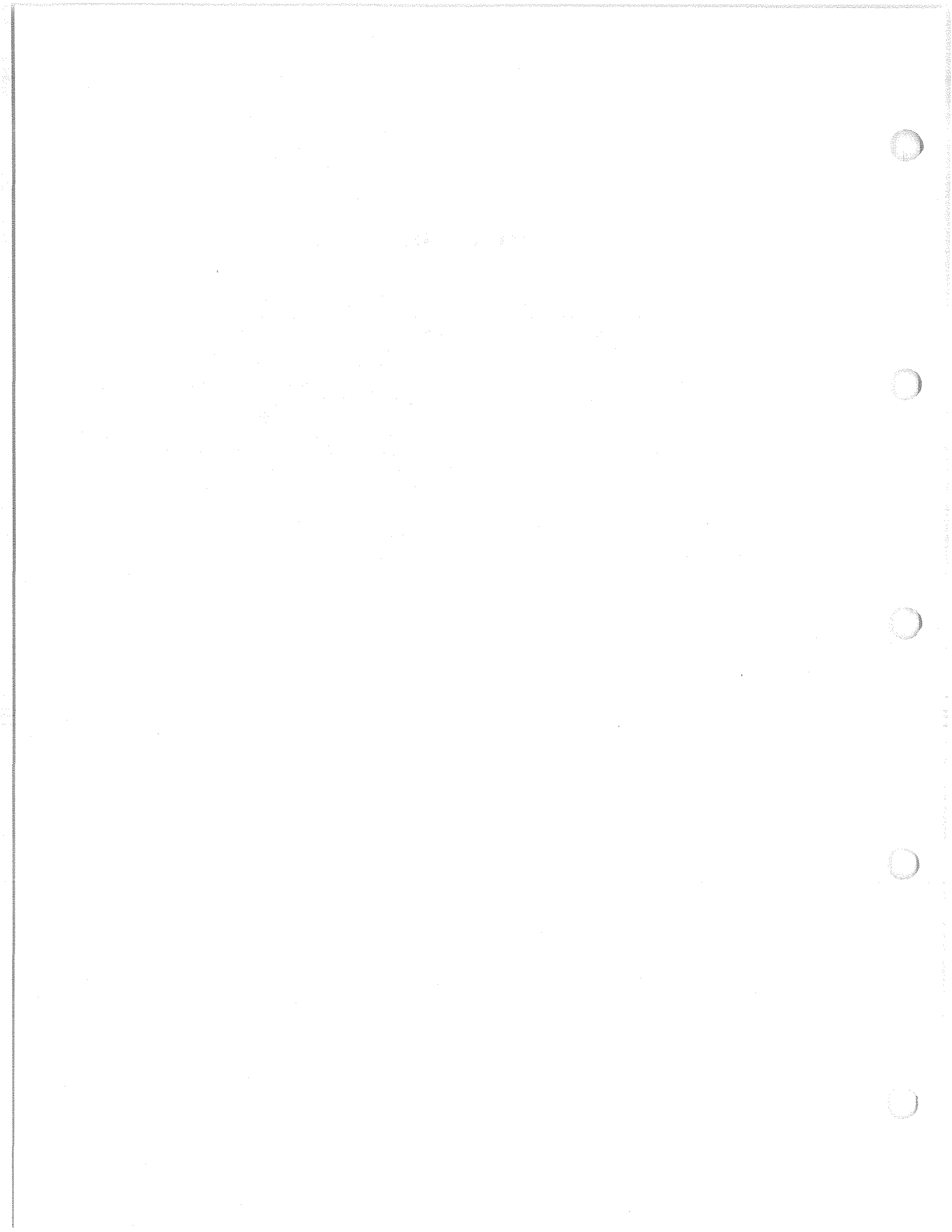
The rules are divided into four major Parts: Part HG, applying to all materials of construction except as provided for in Part HLW; Part HF, applying to assemblies fabricated of wrought material, except as provided for in Part HLW; Part HC, applying to cast iron assemblies; and Part HLW, applying to potable water heaters. Part HF is further subdivided into Subpart HW, containing rules for welded construction, and Subpart HB, containing rules for brazed construction.

The Parts and Subparts of this Section are divided into

Articles. Each Article is given a number and a title, as for example, Part HG, Article 3, Design. Articles are divided into paragraphs which are given a three-digit number, the first of which corresponds to the Article number, thus, under Article 3 of Part HG will be found paragraph HG-307. Paragraphs are further subdivided into subparagraphs. Major subdivisions of paragraphs are designated by three- or four-digit numbers followed by a decimal point and a digit or digits. Where necessary, further subdivisions are represented by letters and then by numbers in parentheses. Minor subdivisions of the paragraphs are also represented by letters. A reference to one of these paragraphs in the text of the Section includes all of the applicable rules in that paragraph. Thus, reference to HG-307 includes all the rules in HG-307.1 through HG-307.4.

This Section does not contain rules to cover all possible details of design and construction. Where complete details are not given, it is intended that the manufacturer, subject to the acceptance of the Authorized Inspector, shall provide details of design and construction which will be as safe as otherwise required by these rules.

When the strength of any part cannot be computed with a satisfactory assurance of safety, these rules provide procedures for establishing its maximum allowable working pressure.



PART HG

GENERAL REQUIREMENTS FOR ALL MATERIALS OF CONSTRUCTION

Article 1	Scope and Service Restrictions	
HG-100	Scope	5
HG-101	Service Restrictions and Exceptions	5
Article 2	Material Requirements	
HG-200	General Material Requirements	6
HG-201	Specific Material Requirements	6
Article 3	Design	
HG-300	Design Pressure	7
HG-301	Shells Under Internal Pressure	7
HG-305	Formed Heads, Pressure on Concave Side	7
HG-306	Formed Heads, Pressure on Convex Side	8
HG-307	Flat Heads	8
HG-309	Spherically Dished Covers (Bolted Heads)	12
HG-312	Cylindrical Parts Under External Pressure	14
HG-315	Thickness of Tubes	19
HG-320	Openings in Boilers, General Requirements	20
HG-321	Reinforcement Required for Openings in Shells and Formed Heads	21
HG-323	Flanged-in Openings in Formed Heads	23
HG-325	Reinforcement Required for Openings in Flat Heads	23
HG-326	Limits of Metal Available for Reinforcement	24
HG-327	Strength of Reinforcement	26
HG-328	Reinforcement for Multiple Openings	26
HG-330	Inspection and Access Openings	27
HG-340	Stayed Surfaces	27
HG-341	Staybolts	29
HG-342	Dimensions of Stays	29
HG-343	Dimensions of Diagonal Stays	31
HG-345	Staying of Heads	31
HG-350	Ligaments	35
HG-360	Requirements for Tube Holes and Tube Attachments	36
HG-370	External Piping Connections	37
Article 4	Pressure Relieving Devices	
HG-400	Pressure Relieving Valve Requirements	38
HG-401	Minimum Requirements for Safety and Safety Relief Valves	40
HG-402	Discharge Capacities for Safety and Safety Relief Valves	41

HG-403	Heating Surface	44
HG-405	Thermal Elements for Pressure-Temperature Relief Valves	44
Article 5	Tests, Inspection, and Stamping	
HG-500	Proof Tests to Establish Design Pressure	45
HG-501	General	45
HG-502	Procedure	46
HG-503	Tests of Parts Subject to Collapse	48
HG-504	Tests of Duplicate Parts	48
HG-505	Test Gages	48
HG-506	Inspection of Proof Tests	48
HG-510	Hydrostatic Tests	48
HG-512	Safety and Safety Relief Valve Accumulation Tests	49
HG-515	Inspection Tests and Certification of Boilers	49
HG-520	Master and Partial Data Reports	50
HG-530	Stamping of Boilers	51
HG-531	Stamping of Parts and Accessories	53
HG-532	Stamping of Field Assembled Wrought Boilers	53
HG-533	Inspection and Stamping of Field Assembled Boiler Pressure Parts	53
HG-540	Authorization to Use Code Symbol Stamps	55
Article 6	Instruments, Fittings, and Controls	
HG-600	For Steam Heating Boilers	57
HG-601	General	57
HG-602	Steam Gages	57
HG-603	Water Gage Glasses	57
HG-604	Water Column and Water Level Control Pipes	58
HG-605	Pressure Control	58
HG-606	Automatic Low-Water Fuel Cutoff and/or Water Feeding Device	58
HG-610	For Hot Water Boilers	58
HG-611	Pressure or Altitude Gages	58
HG-612	Thermometers	59
HG-613	Temperature Control	59
HG-614	Low-Water Fuel Cutoff	59
HG-620	For All Boilers	59
HG-621	Instruments, Fittings, and Controls Mounted Inside Boiler Jackets	59
HG-630	Electric Wiring	59
HG-631	Electrical Code Compliance	59
HG-632	Type Circuitry to Be Used	59
HG-633	Limit Controls	60
HG-634	Shutdown Switches and Circuit Breakers	60
HG-640	Controls and Heat Generating Apparatus	60
Article 7	Installation Requirements	
HG-700	Installation Requirements, All Boilers	61
HG-701	Mounting Safety and Safety Relief Valves	61
HG-703	Piping	61
HG-705	Feedwater Connections	62
HG-707	Oil Heaters	62
HG-709	Provisions for Thermal Expansion in Hot Water Systems	62
HG-710	Stop Valves	65

HG-715	Bottom Blowoff or Drain Valve	66
HG-720	Setting	66
HG-725	Methods of Support	66
Figures		
HG-307	Some Acceptable Types of Unstayed Flat Heads and Covers	11
HG-309	Spherically Dished Steel Plate Covers With Bolting Flanges	13
HG-312.1	Chart for Determining Wall Thickness of Horizontal Cylindrical Furnaces When Constructed of Carbon Steel	15
HG-312.2	Chart for Determining Wall Thickness of Horizontal Cylindrical Furnaces When Constructed of Carbon Steel	16
HG-312.3	Acceptable Type of Ring Reinforced Furnace	17
HG-312.6	Connection Between Plain and Corrugated Furnace	19
HG-312.7	Acceptable Type of Semicircular Furnace Reinforcement	20
HG-320	Chart Showing Limits of Sizes of Openings With Inherent Compensation in Cylindrical Shells	22
HG-321	Chart for Determining Values of F	23
HG-326	Some Representative Configurations Describing the t_r Reinforcement Dimension	25
HG-340.1	Pitch of Staybolts Adjacent to Upper Corners of Fireboxes	28
HG-340.2	Acceptable Proportions for Ends of Throughstays	28
HG-340.3	Examples of Acceptable Corner Welds for Pressures Not Over 30 psi	29
HG-343	Details of Installation of Diagonal Stays	32
HG-345.1(a)	Sketch Showing Application of HG-345.1 to the Staying of Boilers	33
HG-345.1(b)	Sketch Showing Application of HG-345.1 to the Staying of Boilers	34
HG-345.2	Method of Determining Net Area of Irregular Segment of a Head	35
HG-350.1	Example of Tube Spacing With Pitch of Holes Equal in Every Row	35
HG-350.2	Example of Tube Spacing With Pitch of Holes Unequal in Every Second Row	35
HG-350.3	Example of Tube Spacing With Pitch of Holes Varying in Every Second and Third Row	36
HG-350.4	Example of Tube Spacing With Tube Holes on Diagonal Lines	36
HG-402	Official Symbol for Stamp to Denote The American Society of Mechanical Engineers' Standard	41
HG-530.1	Official Symbol for Stamp to Denote The American Society of Mechanical Engineers' Standard	51
HG-530.2	Form of Stamping on Completed Boilers or Their Nameplates for Steam and Water Boilers	52
HG-530.3	Form of Stamping on Completed Boilers or Their Nameplates for Boilers Suitable for Water Only	52
HG-530.4	Form of Data Cast on Cast Iron Boiler Sections for Steam and Water Boilers	54
HG-530.5	Form of Data Cast on Cast Iron Boiler Sections for Boilers Suitable for Water Only	54
HG-530.6	Form of Stamping on Completed Cast Iron Boilers or Their Nameplates for Steam and Water Boilers	54
HG-530.7	Form of Stamping on Completed Cast Iron Boilers or Their Nameplates for Boilers Suitable for Water Only	54
HG-703.1	An Acceptable Piping Installation for Steam Boilers in Battery	63
HG-703.2	An Acceptable Piping Installation for Hot Water Heating Boilers in Battery	64
HG-725(a)	Spacing and Weld Details for Supporting Lugs in Pairs on Horizontal- Return Tubular Boiler	67

HG-725(b)	Welded Bracket Connection for Horizontal-Return Tubular Boiler	67
Tables		
HG-321	Values of Spherical Radius Factor K_1	23
HG-340	Allowable Pitch of Stays, in.	30
HG-370	Minimum Thickness of Material for Threaded Connections to Boilers	37
HG-400.1	Minimum Pounds of Steam per Hour per Square Foot of Heating Surface	38
HG-709.1	Expansion Tank Capacities for Gravity Hot Water Systems	65
HG-709.2	Expansion Tank Capacities for Forced Hot Water Systems	65
HG-715	Size of Bottom Blowoff Piping, Valves, and Cocks	66

ARTICLE 1

SCOPE AND SERVICE RESTRICTIONS

HG-100 SCOPE

The requirements of Part HG apply to steam heating boilers, hot water heating boilers, hot water supply boilers, and to appurtenances thereto, and shall be used in conjunction with the specific requirements in Part HF, Boilers of Wrought Materials, and Part HC, Cast Iron Boilers, whichever is applicable. Part HG is not intended to apply to potable water heaters except as provided for in Part HLW.

HG-101 SERVICE RESTRICTIONS

HG-101.1 Service Restrictions. The rules of this Section are restricted to the following services:

- (a) steam boilers for operation at pressures not exceeding 15 psi;
- (b) hot water heating boilers and hot water supply boilers for operating at pressures not exceeding 160 psi and/or temperatures not exceeding 250°F, at or near the boiler outlet.

HG-101.2 Services in Excess of Those Covered by This Section. For services exceeding the limits specified in HG-101.1, the rules of Section I shall apply.